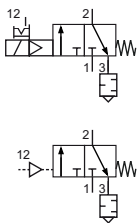


Technical details

Temperature range	-10°C ... +60°C
Input range	electrically operated: 2 ... 10 bar pneumatically operated: max. 16 bar
Mounting	arbitrary
Medium	compressed air according to ISO 8573-1:2010, neutral gases
Materials	Body: zinc diecasting, seals: NBR, inner parts: zinc coated steel, stainless steel and brass
Schutzart	IP 65 according to EN 60529

3/2-way poppet valve, electrically or pneumatically operated.
Silencer is mounted in exhaust.
Plug socket is included.



electrically operated
3/2-way, single solenoid, mechanical
spring return, NC

pneumatically operated
3/2-way, single pilot, mechanical
spring return, NC



Order code

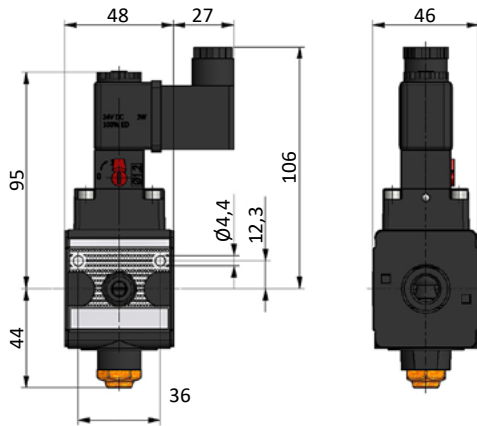
VMX-**-00-0-000*			
Series	←	←	Versions
Connection / Size	←		
14 G1/4 / X1			Digit 4 Version
12 G1/2 / X2			A 24 V DC, 3 W
			D 115 V AC, 7.9 VA
			E 230 V AC, 7.9 VA
			F pneumatically operated

Technical data

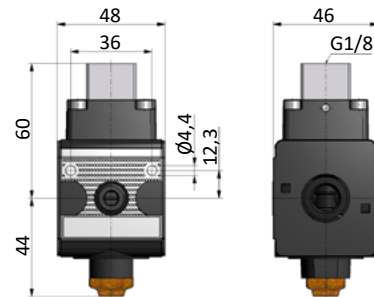
Model-no.:	VMX-14-...	VMX-12-...
Connection	G1/4	G1/2
Size	X1	X2
Flow (1-2 in l/min)	1150	4000
Weight(Version A-E) (kg)	0.46	1.04
Weight(Version F) (kg)	0.38	0.97

Dimensions

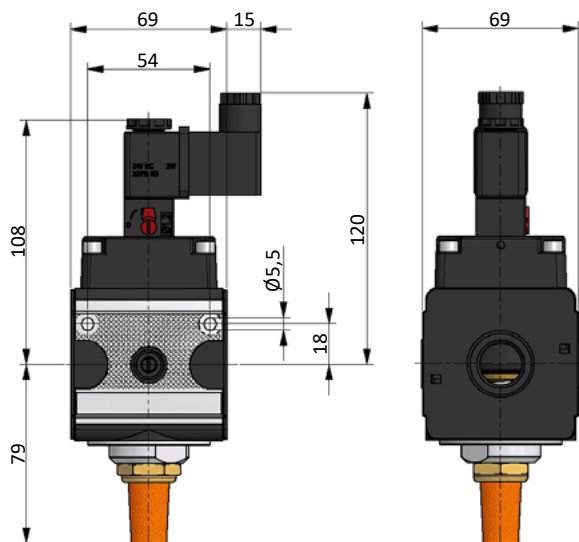
Size X1, electrically operated



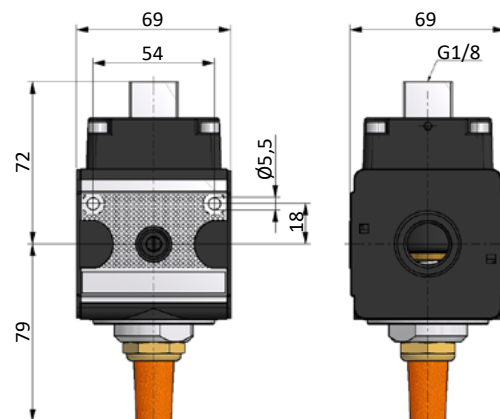
Size X1, pneumatically operated



Size X2, electrically operated



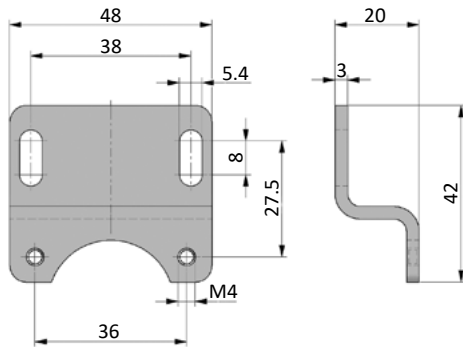
Size X2, pneumatically operated



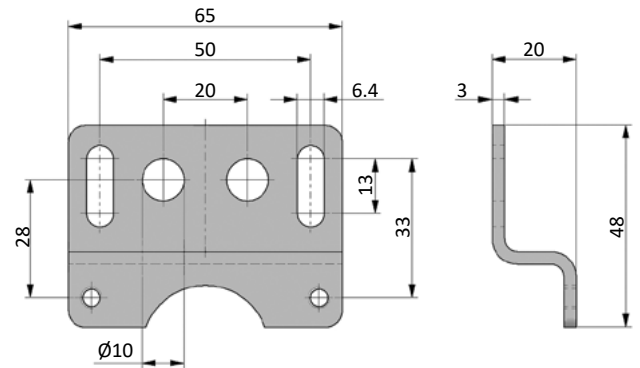
Mounting brackets WX

Mounting brackets made of zinc coated steel.

WX-11

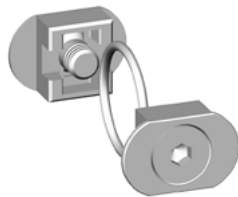


WX-33



Coupling kits KPX

KPX-11



KPX-33

