

High-Flow VANGUARD FRLs Filter-Regulator-Lubricators

FDRL189D Models Port Sizes: 3/4, 1



Model Shown: FDRL189D-8

SPECIFICATIONS

Ambient/Media Temperature: (without lockout valve)
Plastic Bowl, all drain types: 40° to 125°F (4° to 52°C).
Metal Bowl, manual & automatic drains: 40° to 175°F (4° to 79°C).
Metal Bowl, float drains: 40° to 150°F (4° to 66°C).

Bowls: 16-Ounce (480-ml) capacity aluminum bowls with sight glass or polycarbonate plastic bowls with steel shatterguard.

Bowl Rings: Aluminum.

Filter Drain:

Internal automatic drain; optional manual drain, internal float drain, external Hydro-Jector drain, or Warrior electronic drain.

Filter Element: 5- μ m-rated polyethylene; optional 5- μ m, 20- μ m, or 40- μ m sintered bronze.

Fluid Media: Compressed air.

Heads: Aluminum.

Inlet Pressure:

Minimum: 15 psig (1 bar) with automatic drain, 30 psig (2 bar) with internal float drain.
Plastic bowls: 150 psig (10 bar) maximum.
Metal bowls: 200 psig (14 bar) maximum.

Oil Adjustment: External; tamper-resistant.

Outlet Pressure: Adjustable up to 100 psig (7 bar).

Pressure Adjustment Locking Key: Removable.

Pressure Gauge: 0 to 200 psig (14 bar); 1/4 NPT gauge ports front and rear.

Seals: Nitrile.

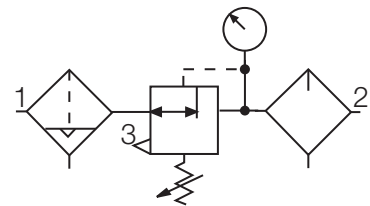
- ◆ Individual filter (**FD100**); piston-type regulator (**R180M**); sight feed design lubricator (**L29D**).
- ◆ Inline mounting.
- ◆ 5- μ m-rated polyethylene filter element; optional sintered bronze elements.
- ◆ Metal bowls with clear nylon sight glass **or** polycarbonate plastic bowls with steel shatterguard.
- ◆ Internal automatic filter drain. Optional manual drain, internal float drain, external Hydro-Jector drain, or Warrior electronic drain.
- ◆ Self-relieving regulator; non-relieving optional.
- ◆ Pressure gauge.
- ◆ NPTF port threads; optional *BSPP* threads.

AIR FLOW DATA

See Flow Charts for individual assembly components on preceding pages.

ISO FRL Symbol

Automatic Drain
Self-relieving



REPLACEMENT FILTER ELEMENT KITS

Element Type	Kit Number
5- μ m polyethylene (Std element).....	KA109-3PE
5- μ m bronze	KA109-03E5
20- μ m bronze	KA109-03E4
40- μ m bronze	KA109-03E3



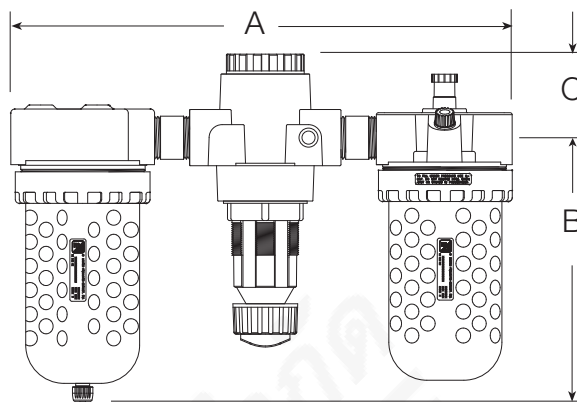
บริษัท ฟลูเทค จำกัด
FLU-TECH CO.,LTD

845/3-4 หมู่ 3 ต.เทพารักษ์ ต.เทพารักษ์ อ.เมือง จ.สมุทรปราการ 10270

845/3-4 Thepharak RD., T.Thepharak, A.Muang, Samutprakarn 10270 THAILAND
Tel. 0 2384 6060, Fax 0 2384 5701, Email : sales@flutech.co.th, www.flutech.co.th

DIMENSIONS inches (mm)

				Weight
A	B	C	Depth	lb (kg)
15.8 (401)	8.0 (204)	1.4 (37)	4.3 (108)	8.00 (3.64)



ORDERING INFORMATION

Change the letters in the sample model number below to specify the FRL you want.

NOTE: For model numbers longer than 15 characters, please consult Master Pneumatic.

B FD R L 1 8 9D - 6 Y W

BOWL TYPE

Metal bowls..... B
Plastic bowls..... Leave Blank

FILTER DRAIN

No filter Leave blank
Internal automatic drain FD
Manual drain F
Internal float drain (**plastic stem**) F5A
(Must be ordered with plastic bowl option under **BOWL TYPE**).
Internal float drain (**brass stem**) F6A
(Must be ordered with metal bowl option under **BOWL TYPE**).
External Hydro-Jector drain; FE
(Must be ordered with metal bowl option under **BOWL TYPE**).
Warrior electronic drain; F2A
(Must be ordered with metal bowl option under **BOWL TYPE**).

REGULATOR

No Regulator Leave Blank
Regulator R

LUBRICATOR

No Lubricator Leave Blank
Lubricator..... L

FILTER WITH DIFFERENTIAL GAUGE OPTION

Only applies to standard filter option above. Coalecent options

are setup separately in another section.
No Filter 1
Standard filter no tapped head 1

Anyone requiring a filter and/or coalescing filter with a differential pressure gauge, contact factory for number.

REGULATOR

No Regulator 0
Regulator 8

LUBRICATOR

No Lubricator 0
Lubricator..... 9D

PORT TYPE

NPTF threads Leave Blank
BSPP threads W

OPTIONS

(More than one option can be chosen. Add in alphabetical order)

None Leave Blank
Non-relieving regulator.....A
Sintered bronze filter element:
5-µm rating.....E5
20-µm rating.....E4
40-µm rating.....E3

Adjusting springs:

0-150 psig (0-10 bar).....H **
0-50 psig (0-3.4 bar).....L

Delete bowl drain: 1/4 NPT

female port insteadLDC
Metal domeMD
Limit maximum psig settingM*
Delete gaugeNG
Regulator tee handleT
Quick-fill lubricator Q-capQ

* Insert maximum limited pressure.

** H option spring includes metal dome.

PORT SIZE

3/4 NPTF.....6
1 NPTF.....8



บริษัท ฟลูเทค จำกัด
FLU-TECH CO.,LTD

845/3-4 หมู่ 3 ต.เทพารักษ์ อ.เมือง จ.สมุทรปราการ 10270

845/3-4 Thepharak RD., T.Thepharak, A.Muang, Samutprakorn 10270 THAILAND
Tel. 0 2384 6060, Fax 0 2384 5701, Email : sales@flutech.co.th, www.flutech.co.th