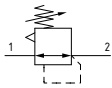


▶ Panel mounted pressure regulator with pressure gauge built into the adjusting knob (RP)



- ▶ Diaphragm pressure regulator with relieving
- ▶ Aluminium body version
- ▶ High flow rates with low pressure drops
- ▶ Available with 1/8" and 1/4" connections
- ▶ Low hysteresis rolling diaphragm and balanced spool
- ▶ Available in four pressure ranges up to 12 bar
- ▶ Fitted with panel mounting locking ring
- ▶ Atex certification Atex II 2GD
- ▶ Ø 24,5 pressure gauge built into adjusting knob
- ▶ Pressure gauge with 4 mounting positions relative to IN connection (0°-90°-180°-270°)
- ▶ Class 4 pressure gauge (±4% full scale)



Note

For installations where a more accurate and constant pressure is required, the unit should be installed as close as possible to the point of use.

Technical characteristics	
Size	Size 1
Body and connections type	Aluminium body version
IN / OUT connections	G1/8" - G1/4"
Assembly configuration	Stand alone Panel mounted With fixing bracket
Assembly positions	Indifferent
Pressure range	0-2 bar 0-4 bar 0-8 bar 0-12 bar
Regulation	Manul push and lock with pressure
Pressure measurement	Pressure gauge built into knob
Max. fittings torque IN / OUT connections	G1/8" metal: 15Nm G1/4" metal: 20Nm
Max.fitting torque pressure gauge connection port	G1/8" metal: 15Nm

Operational characteristics	
Size	Size 1
Maximum working pressure	13 bar
Minimum working pressure	0,5 bar
Working temperature	-10°C ... +50 °C

Weights	
Size	Size 1
Aluminium body version	190 g

AIR TREATMENT

FLU-TECH CO. LTD.

Email: sales@flutech.co.th Website: https://flutech.co.th

Tel: 02-384-6060, 086-369-5871-3 Fax: 02-384-5701 LINE OA: @flutech.co.th

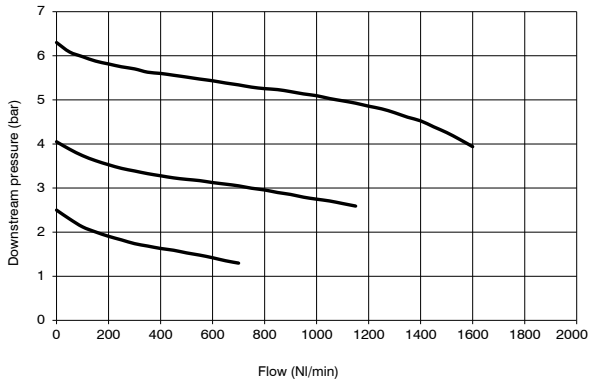
Address (HQ): 845/3-4, Moo 3, Theparak Rd., T. Theparak, A. Mueang Samut Prakan, Samut Prakan, 10270, Thailand



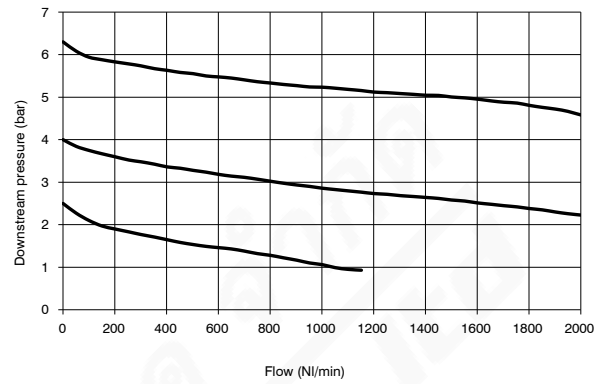
Characteristic curves

Flow rate curves

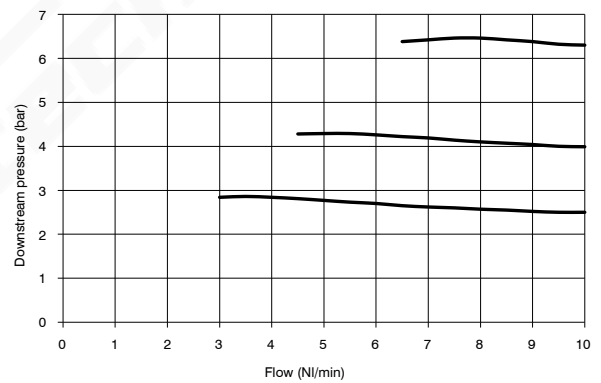
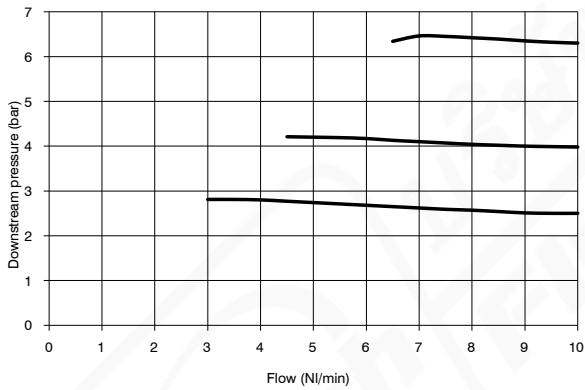
G1/8" 0-8 bar P1= 7 bar



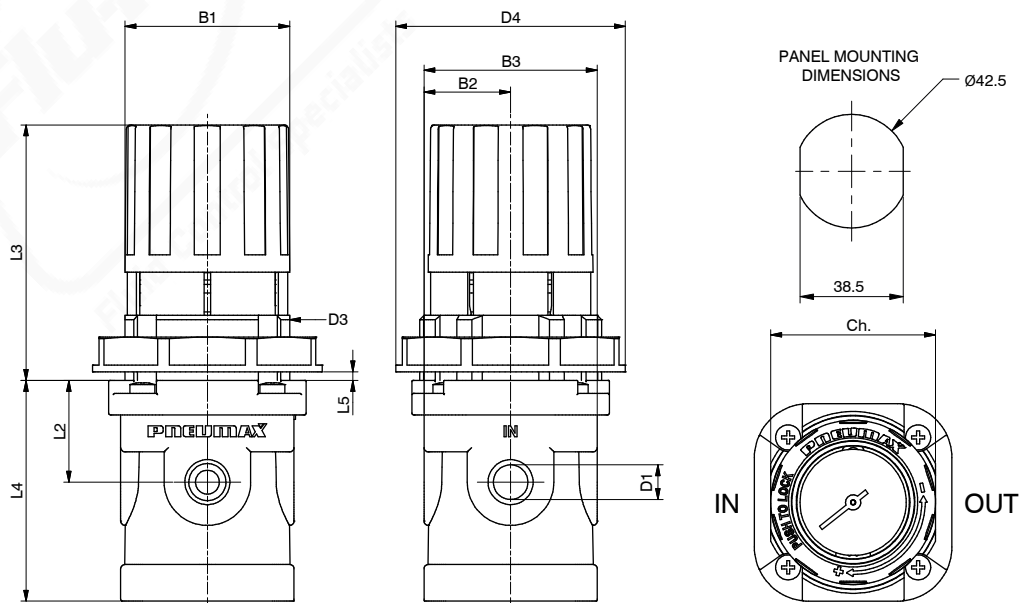
G1/4" 0-8 bar P1= 7 bar



Adjustment characteristic



Dimensions

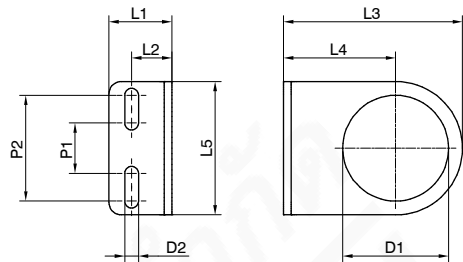


Model	B1	B2	B3	D1	D2	D3	D4	L2	L3	L4	L5	CH
RP171ABM...	38	20	40	G1/8"	G1/8"	M42x1,5	53	23.5	59	51	4 max	38
RP171BBM...	38	20	40	G1/4"	G1/8"	M42x1,5	53	23.5	59	51	4 max	38



► Fixing bracket

Coding: 17150



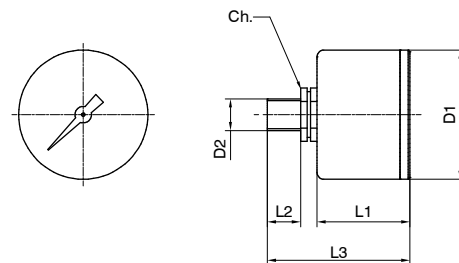
Model	L1	L2	L3	L4	L5	D1	D2	P1	P2
17150	20	13	50	30	40	30	5,5	20	30

AIR TREATMENT

► Pressure gauge

Coding: 17070^V^S

VERSION	
^V A = Ø40	
B = Ø50	
SCALE	
^S A = 0 - 4 bar	
B = 0 - 6 bar	
C = 0 - 12 bar	



Model	D1	D2	L1	L2	L3	Ch
17070A...	41	Gc-1/8"	26	10	44	14
17070B...	49	Gc-1/8"	27	10	45	14