



Check valve for water and air

- Brass or stainless steel housing
- Inner parts stainless steel



Product variants described in the data sheet may differ from the product presentation and description.

Type description

Non-return valve for horizontal or vertical installation.



Table of contents

1. General technical data	3
1.1. Heavy design	3
1.2. Light design	3
1.3. Angle seat design	4
2. Dimensions	4
3. Ordering information	4
3.1. Bürkert eShop – Easy ordering and quick delivery.....	4
3.2. Bürkert product filter.....	4
3.3. Ordering chart.....	5
Brass body, heavy design.....	5
Brass body, light design	5
Stainless steel body, angle seat design.....	6

1. General technical data

Note:

Other versions on request

1.1. Heavy design

Product properties	
Dimensions	Detailed information can be found in chapter "2. Dimensions" on page 4.
Materials	
Body	Pressed brass CW 617 N
Valve cone	Polyamide (PA)
Spring	Stainless steel
Sealing	NBR
Orifice	DN10...DN40
Medium data	
Medium temperature	-20 °C...max. +100 °C
Performance data	
Nominal pressure	Detailed information can be found in chapter "Brass body, heavy design" on page 5.
Opening pressure ^{1.)}	0.02 bar
Environment and installation	
Installation	Horizontal or vertical

1.) Pressure values: Overpressure with respect to atmospheric pressure

1.2. Light design

Product properties	
Dimensions	Detailed information can be found in chapter "2. Dimensions" on page 4.
Materials	
Body	Pressed brass CW 617 N
Valve cone	Polyamide (PA)
Spring	Stainless steel
Sealing	NBR
Orifice	DN10...DN100
Medium data	
Medium temperature	Max. 100 °C
Performance data	
Nominal pressure	Detailed information can be found in chapter "Brass body, light design" on page 5.
Opening pressure ^{1.)}	0.02 bar
Environment and installation	
Installation	Horizontal or vertical

1.) Pressure values: Overpressure with respect to atmospheric pressure

1.3. Angle seat design

Product properties	
Dimensions	Detailed information can be found in chapter "2. Dimensions" on page 4.
Materials	
Body	Stainless steel 1.4408
Sealing	PTFE
Orifice	DN8...DN50
Medium data	
Medium temperature	-20 °C...max. +200 °C
Performance data	
Nominal pressure	Detailed information can be found in chapter "Stainless steel body, angle seat form" on page 6.
Opening pressure ¹⁾	0.8 bar
Environment and installation	
Installation	Horizontal or vertical

1.) Pressure values: Overpressure with respect to atmospheric pressure

2. Dimensions

Note:

The dimensions are listed in the chapter Ordering information:

- **"Brass body, heavy design"** on page 5
- **"Brass body, light design"** on page 5
- **"Stainless steel body, angle seat design"** on page 6

3. Ordering information

3.1. Bürkert eShop – Easy ordering and quick delivery



Bürkert eShop – Easy ordering and fast delivery

You want to find your desired Bürkert product or spare part quickly and order directly? Our online shop is available for you 24/7. Sign up and enjoy all the benefits.

[Order online now](#)

3.2. Bürkert product filter



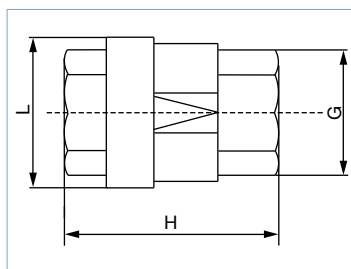
Bürkert product filter – Get quickly to the right product

You want to select products comfortably based on your technical requirements? Use the Bürkert product filter and find suitable articles for your application quickly and easily.

[Try out our product filter](#)

3.3. Ordering chart

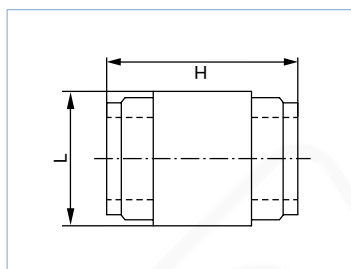
Brass body, heavy design



DN [mm]	Port connection ISO 228/1	G [mm]	H [mm]	L [mm]	Nominal pressure ^{1.)} [bar]	Flow rate K _v	Article no.
10	G 3/8	21.0	47.0	27.0	40	3.7	783275 ☒
15	G 1/2	26.0	59.0	34.5	40	5.8	783276 ☒
20	G 3/4	32.0	65.0	42.0	40	8.6	783277 ☒
25	G 1	39.0	75.0	49.0	25	13.8	783278 ☒
32	G 1 1/4	49.0	83.0	61.0	25	20.2	783279 ☒
40	G 1 1/2	55.0	89.0	73.0	16	30.9	783280 ☒
50	G 2	68.0	101.5	88.0	16	48.8	783281 ☒

1.) Pressure values: Overpressure with respect to atmospheric pressure

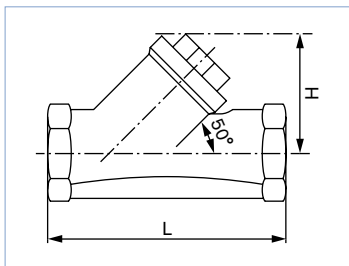
Brass body, light design



DN [mm]	Port connection ISO 228/1	H [mm]	L [mm]	Nominal pressure ^{1.)} [bar]	Flow rate K _v	Article no.
10	G 3/8	55.0	34.0	16	2.8	783285 ☒
15	G 1/2	45.0	28.0	40	3.7	783286 ☒
20	G 3/4	48.0	35.0	40	5.8	783287 ☒
25	G 1	56.0	42.0	25	8.6	783288 ☒
32	G 1 1/4	62.0	51.0	25	13.8	783289 ☒
40	G 1 1/2	69.0	61.0	16	20.2	783290 ☒
50	G 2	77.0	73.0	16	30.9	783291 ☒
65	G 2 1/2	93.0	90.0	12	48.8	783292 ☒
80	G 3	113.0	113.0	12	79.4	783293 ☒
100	G 4	135.0	140.0	10	124.9	783294 ☒

1.) Pressure values: Overpressure with respect to atmospheric pressure

Stainless steel body, angle seat design



DN [mm]	Port connection DIN 2999	H [mm]	L [mm]	Nominal pressure ^{1.)} [bar]	Flow rate K _v	Article no.
8	R ¼	30.0	65.0	40	3.7	783305
10	R ⅜	30.0	65.0	40	3.7	783306
15	R ½	34.0	65.0	40	5.8	783307
20	R ¾	39.0	75.0	40	8.6	783308
25	R 1	42.0	90.0	40	13.8	783309
32	R 1¼	50.0	110.0	40	20.2	783310
40	R 1½	57.0	120.0	40	30.9	783311
50	R 2	70.0	150.0	40	48.8	783312

1.) Pressure values: Overpressure with respect to atmospheric pressure