

DNG 32-320 ISO 15552



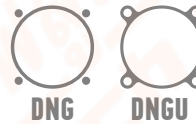
Standards-based cylinders to ISO15552 ,ISO 6431

The piston seal is composed of two Y-shape one way seal structure which has compensation function, long service life and low start-up pressure

Robust tie rod design

With adjustable end-position cushioning at both ends

Double-acting



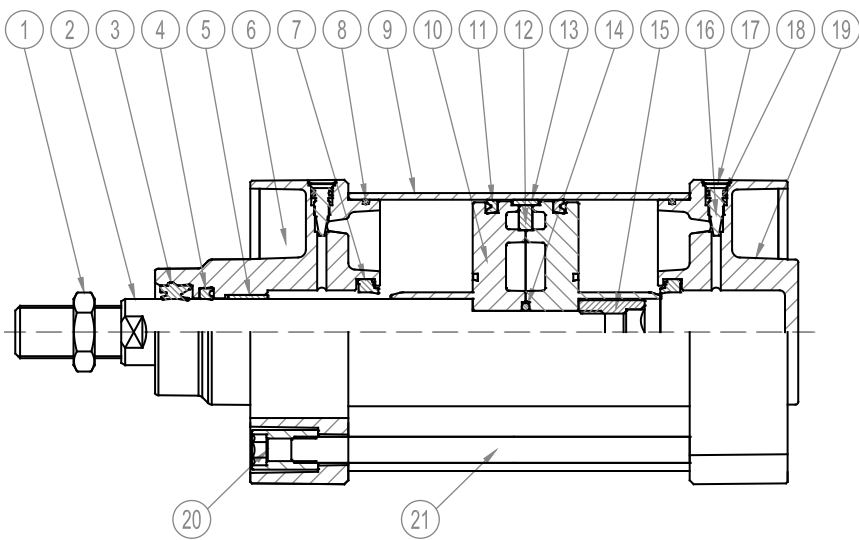
TECHNICAL DATA

BORE[Φ]	32	40	50	63	80	100	125	160	200	250	320
Pneumatic connection	G1/8"	G1/4"	G1/4"	G3/8"	G3/8"	G1/2"	G1/2"	G3/4"	G3/4"	G1"	G1"
Piston rod thread	M10×1.25	M12×1.25	M16×1.5	M16×1.5	M20×1.5	M20×1.5	M27×2	M36×2	M36×2	M42×2	M48×2
Cushioning	Adjustable at both ends										
Cushioning length[mm]	19	21	23	23	30	30	40	40	50	50	50
Operating temperature	-20-80°C										
Operating pressure	12 bar										
Operating medium	Filtered compressed air, with or without lubrication										
Version	Single acting or Double acting										
Type of mounting	Via accessories										
Mounting position	Any										

1 bar=0.1MPa=14.5PSI



MATERIALS



1	Nut,Piston rod	Carbon steel
2	Piston rod	C45 chrome-plated steel
3	Wiper seal	PU
4	Wiper seal	NBR
5	Oil bearing	Steel
6	Front cover	Die cast aluminium
7	Cushioning seal	NBR
8	O-ring,Front cover	NBR
9	Tube	Anodized aluminium
10	Piston	Die cast aluminium
11	Piston seal	NBR
12	Magnet	Ferrite
13	Wear Ring	POM
14	O-ring,Piston rod	NBR
15	Piston rod lock nut	Carbon steel
16	Cushion adjustment screw	Brass
17	Snap ring,Cushion screw	Spring steel
18	O-ring,Cushion screw	NBR
19	End Cover	Die cast aluminium
20	Tie-rod nut	Nickel-plated steel
21	Tie rod	Nickel-plated steel

The cover of Ø32-100 only have 3 Wiper seal. Besides, they use Snap ring for the Cushion screw
 The cover of Ø125-320 have 3 4 Wiper seal, they use inner snap ring for the Cushion screw

KEY CODE



DNG	D	50	50	25	S	SA	P
SERIES	TYPE	BORE	STROKE[mm]	ADJUSTABLE STROKE	MAGNETIC	VERSION	THREAD TYPE
DNG=With tie rod	Blank=Standard	32-40-50-63-80-100-125-160-200-250-320	As request	As request	Blank=Without magnet	SA= Single acting	P= PT Thread
DNGU=Without tie rod	D=Double rod type				S=With magnet	DA= Double acting	N= NPT Thread
							G= G Thread

2	4	LB	I
PISTON ROD MATERIAL	TIE ROD MATERIAL	MOUNTING TYPE	CONNECTOR TYPE
Blank=Carbon steel	Blank=Carbon steel	Blank=Without accessory	Blank=Without accessory
2=316 Stainless steel	4=316 Stainless steel	LB=Angle bracket	I=I JOINT
		FA=Flange	Y=Y JOINT
		CA=Male clevis	U=Rod eye joint
		CB=Female clevis	F=Floating joint
		LNG=Square hinge	

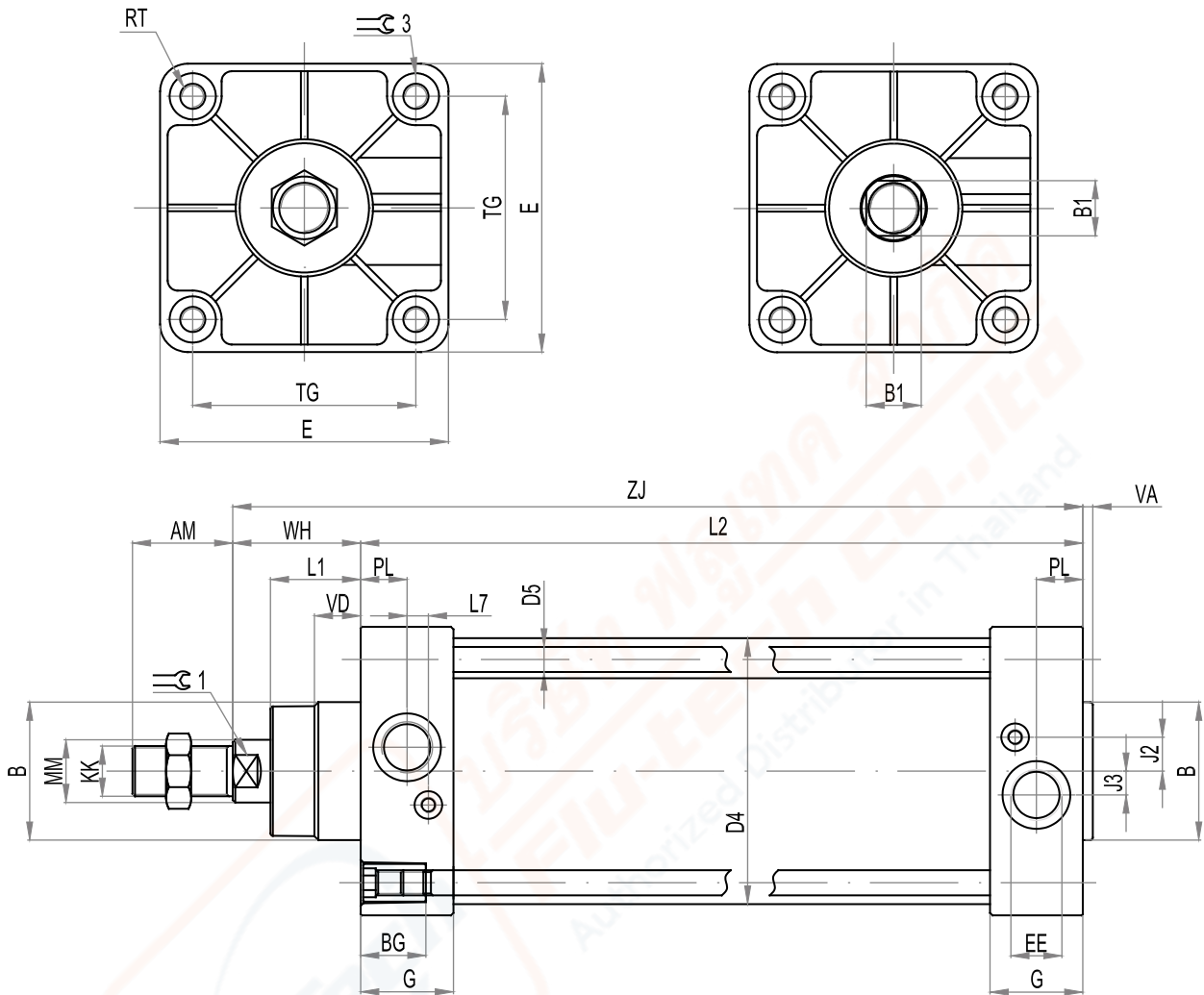
PS: High temperature seals available upon request



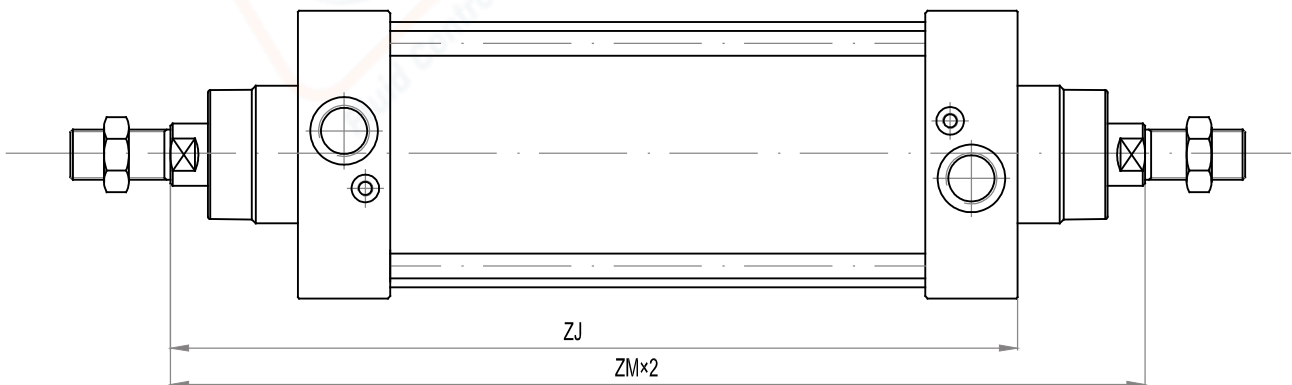
บริษัท ฟลูเทค จำกัด
 FLU-TECH CO.,LTD

845/3-4 หมู่ 3 ถ.เทพารักษ์ ต.เทพารักษ์ อ.เมือง จ.สมุทรปราการ 10270
 845/3-4, Mhoo 3, Theparak Rd., T. Theparak, A. Muang, Samut Prakan, 10270, Thailand
 Tel. 02 384 6060, Fax. 02 384 5701 Email sales@flutech.co.th , www.flutech.co.th

DNG Standard Type



DNGD Double rod type



Φ [MM]	32	40	50	63	80	100	125	160	200	250	320
AM	22	24	32	32	40	40	54	72	72	84	96
B	30	35	40	45	45	55	60	65	75	90	110
B1	17	17	23	23	26	26	41	55	55	64	72
BG	22.5	22.5	22.5	23	26	26	32.5	36	36	40	45
D4(Φ)	37	45	55	68	86	106	133	170	210	262	335
D5(Φ)	5.1	5.1	6.95	6.95	8.25	8.25	10.8	14.35	14.35	20	22
E	47	53	65	75	95	115	140	180	220	270	350
EE	G1/8"	G1/4"	G1/4"	G3/8"	G3/8"	G1/2"	G1/2"	G3/4"	G3/4"	G1"	G1"
G	27.5	32	31	33	33	37	46	50	50	60	65
J2	6	8.5	9.5	11.5	13.5	13.5	14	20	20	25	30
J3	5.5	6	7.5	7.5	9	9.5	14	15	15	25	30
KK	M10×1.25	M12×1.25	M16×1.5	M16×1.5	M20×1.5	M20×1.5	M27×2	M36×2	M36×2	M42×2	M48×2
L1	19	21	27	27	33	36	40	58	65	75	90
L2	94	105	106	121	128	138	160	180	180	200	220
L7	6	7.5	6.5	7.5	7.5	8.5	12	12	12	10	15
MM	12	16	20	20	25	25	32	40	40	50	63
PL	13	17	15.5	16.5	16.5	18.5	23	25	25	30	30
RT	M6	M6	M8	M8	M10	M10	M12	M16	M16	M20	M24
TG	32.5	38	46.5	56.5	72	89	110	140	175	220	270
VA	3	3.5	3.5	4	4	4	4	4	5	8	10
VD	8	10	10	12	15	15	10	10	25	25	25
WH	26	30	37	37	46	51	65	80	95	105	120
ZJ	120	135	143	158	174	189	225	260	275	305	340
ZM	146	165	180	195	220	240	290	340	370	410	460
≡C1	10	13	17	17	22	22	27	36	36	46	55
≡C3	6	6	8	8	-	-	-	-	-	-	-

MOUNTING ATTACHMENTS AND ACCESSORIES

Φ	LB	FA/FB	CA	CB	LNG	SNCS	I	Y	U	PIN
										
32	●	●	●	●	●	●	●	●	●	●
40	●	●	●	●	●	●	●	●	●	●
50	●	●	●	●	●	●	●	●	●	●
63	●	●	●	●	●	●	●	●	●	●
80	●	●	●	●	●	●	●	●	●	●
100	●	●	●	●	●	●	●	●	●	●
125	●	●	●	●	●	●	●	●	●	●
160	●	●	●	●	●	●	●	●	●	●
200	●	●	●	●	●	●	●	●	●	●
250	●	●	●	●	●	●	●	●	●	●
320	●	●	●	●	●	●	●	●	●	●

More are available in accessories. Cover kits and service kits are available