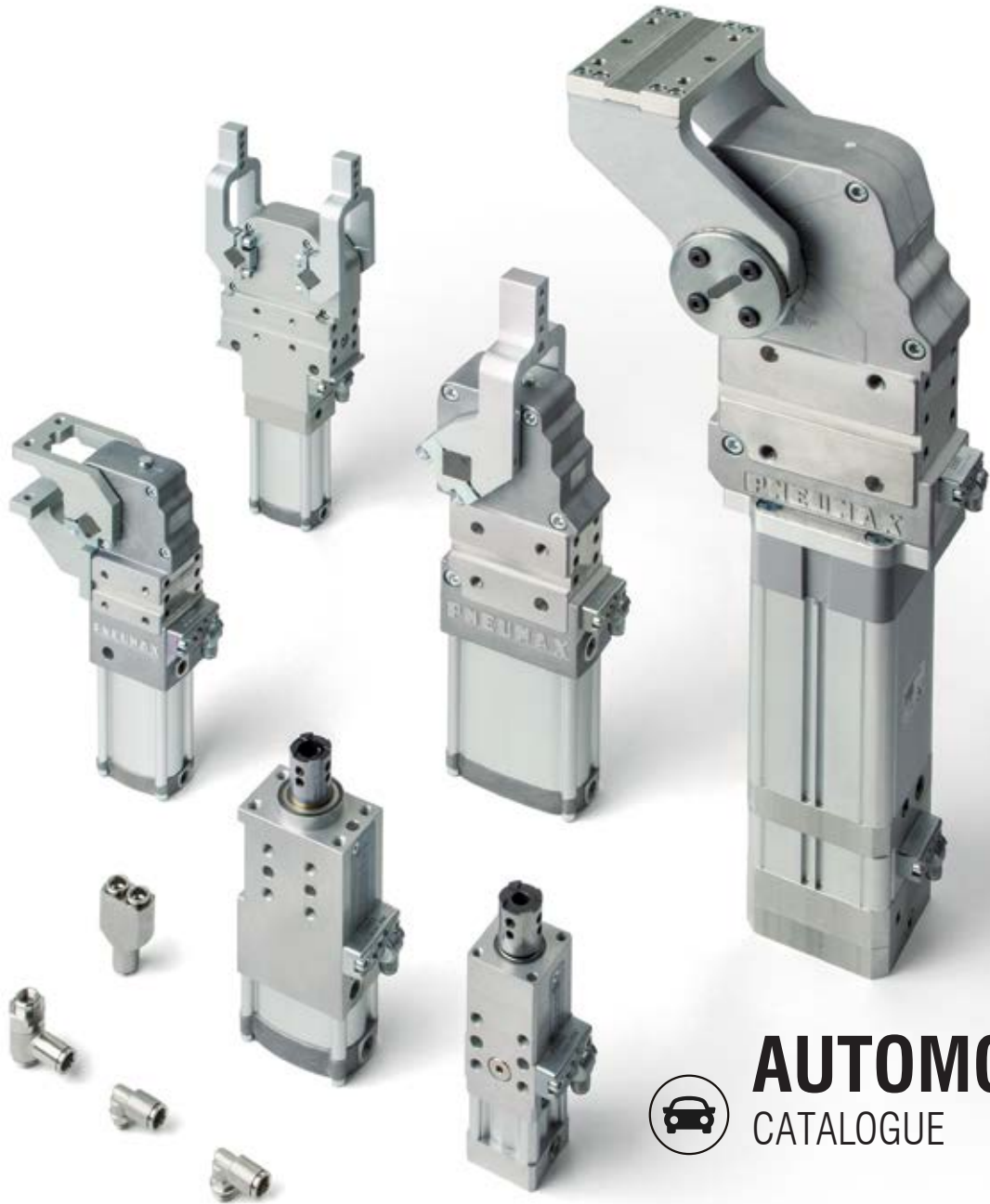




**PNEUMAX**



**AUTOMOTIVE**  
CATALOGUE



WWW.FLUTECH.CO.TH



ADD FRIEND  
@flutech.co.th

FLU-TECH CO.,LTD | บริษัท ฟลูเทค จำกัด  
845/3-4 M.3 , Theparak, Muang, Samutprakan 10270  
845/3-4 หมู่ 3 ถ.เทพารักษ์ ต.เทพารักษ์ อ.เมือง จ.สมุทรปราการ 10270

# 6110-Series

## Guided compact cylinder with additional metal rod scrapers



The rod guide is equipped with bearing bushings and guarantees **high precision and high loads**.

### Technical characteristics

Function	double acting
Fluid	filtered air, if lubricated, the lubrication must be continuous
Working pressure	max. 10 bar
Working temperature	-5°C - +70°C
Cushioning	elastic bumper on both ends

### Construction characteristics

Body	anodised aluminium
Guide rods	tempered and chromed steel
Piston	aluminium
Piston rod	C43 chromed steel
Rods bushing	bearing bushing
End plate	anodised aluminium
Piston seal	oil resistant NBR rubber
Piston rod seal	PUR
External rod scraper	brass
Internal rod scraper	NBR
Plate	nickel plated steel

The cylinders are equipped with 4 rod scrapers on the guide rods and 1 rod scraper on the central piston rod

### Standard strokes

Bore	Stroke								
	10	20	25	50	100	125	150	175	200
Ø32			•	•	•	•	•	•	•
Ø40			•	•	•	•	•	•	•
Ø50			•	•	•	•	•	•	•
Ø63			•	•	•	•	•	•	•

Intermediate strokes can be obtained using spacers with defined length (5, 10, 15, 20 mm).

Example: It is possible to obtain a **6110.32.45.B** cylinder from a **6110.32.50.B** cylinder by inserting a spacer with length of 5 mm.

The intermediate strokes manufactured without the use of spacers are considered special executions.

### Ordering string

## 6110-Series

**6110 50 175 C**

**6110**

VERSION

**50**

SIZE

**32** = Ø 32 mm  
**40** = Ø 40 mm  
**50** = Ø 50 mm  
**63** = Ø 63 mm

**175**

STROKE

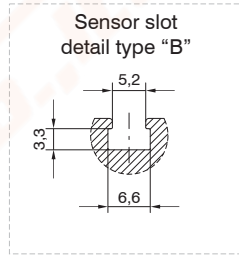
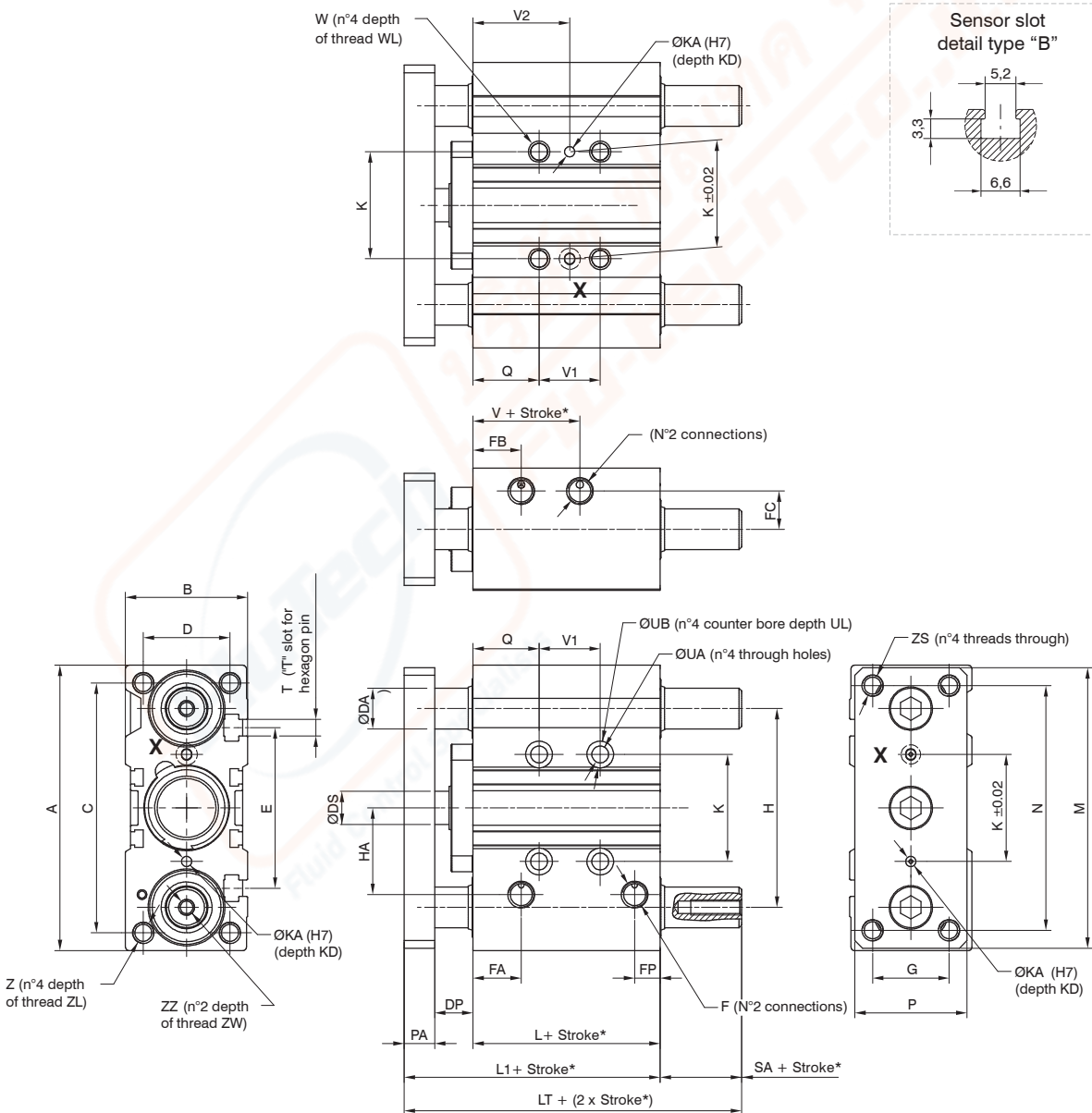
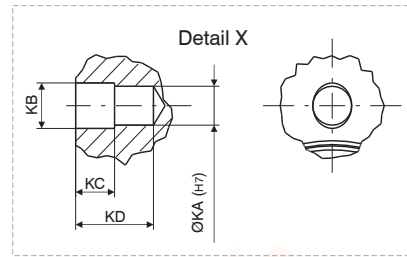
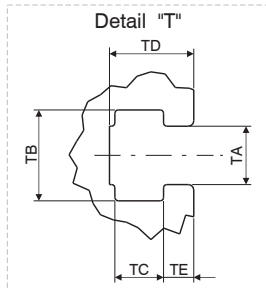
**25** = 25 mm      **150** = 150 mm  
**50** = 50 mm      **175** = 175 mm  
**100** = 100 mm    **200** = 200 mm  
**125** = 125 mm

**C**

SPECIFICATION

**C** = Side supply ports closed  
**CL** = Top supply ports closed

6110 / Guided compact cylinder



\* DIMENSIONAL TOLERANCE FOR DOWEL HOLES: ±0.02

DIMENSIONAL TOLERANCE FOR THREADED HOLES: ±0.1

REV. 00 - 03/04/2015



## Overall dimensions

Bore	Ø32	Ø40	Ø50	Ø63
Table of dimensions				
<b>A</b>	112	120	148	162
<b>B</b>	48	54	64	78
<b>C</b>	98	106	130	142
<b>D</b>	34	40	46	58
<b>DA</b>	16	16	20	20
<b>DP</b>	15	20	23	23
<b>DS</b>	16	16	20	20
<b>E</b>	63	72	92	110
<b>F</b>	G1/8"	G1/8"	G1/4"	G1/4"
<b>FA</b>	19	13	13	14
<b>FB</b>	19	13	13	14
<b>FC</b>	15	18	21,5	28
<b>FP</b>	10	11	11	12,5
<b>G</b>	30	30	40	50
<b>H</b>	78	86	110	124
<b>HA</b>	34	38	47	55
<b>K</b>	42	50	66	80
<b>KA</b>	4	4	5	5
<b>KB</b>	4,5	4,5	6	6
<b>KC</b>	3	3	4	4
<b>KD</b>	6	6	8	8
<b>L</b>	48,5	50	50	55
<b>L1</b>	75,5	82	88	93
<b>LT</b>	82,5	89	93	100
<b>M</b>	110	118	146	158

Bore	Ø32	Ø40	Ø50	Ø63
Table of dimensions				
<b>N</b>	96	104	130	130
<b>PA</b>	12	12	15	15
<b>P</b>	44	44	60	70
<b>Q</b>	26	22	24	24
<b>SA</b>	7	7	5	7
<b>T</b>	M6	M6	M8	M10
<b>TA</b>	6,5	6,5	8,5	11
<b>TB</b>	10,5	10,5	13,5	17,8
<b>TC</b>	5,5	5,5	7,5	10
<b>TD</b>	9,5	11	13,5	18,5
<b>TE</b>	3,5	4	4,5	7
<b>UA</b>	6,6	6,6	8,6	8,6
<b>UB</b>	11	11	14	14
<b>UL</b>	7,5	7,5	9	9
<b>V</b>	17	19	15	20
<b>V1</b>	See table 1			
<b>V2</b>				
<b>W</b>	M8x1,25	M8x1,25	M10x1,5	M10x1,5
<b>WL</b>	16	16	20	20
<b>Z</b>	M8x1,25	M8x1,25	M10x1,5	M10x1,5
<b>ZL</b>	20	20	22	22
<b>ZS</b>	M8x1,25	M8x1,25	M10x1,5	M10x1,5
<b>ZZ</b>	M6	M8	M10	M10
<b>ZW</b>	20	20	25	25

Table 1	V1			V2		
	stroke ≤ 25	25 < stroke ≤ 100	100 < stroke ≤ 200	stroke ≤ 25	25 < stroke ≤ 100	100 < stroke ≤ 200
<b>Ø32</b>	24	48	124	38	50	88
<b>Ø40</b>				34	46	84
<b>Ø50</b>				36	48	86
<b>Ø63</b>	28	52	128	38	50	88

## Special design products

### Cooling water intake cylinder for welding guns' electrodes replacement

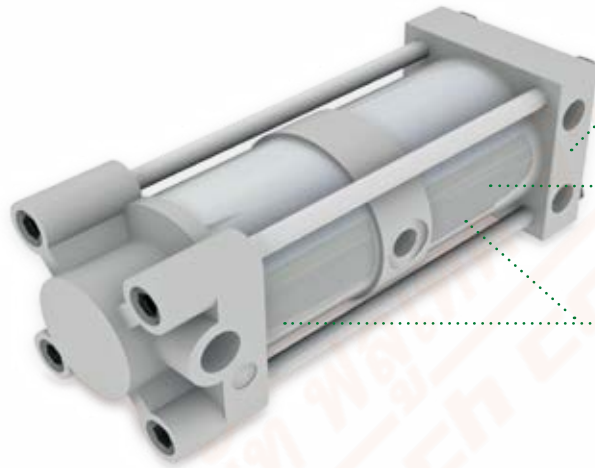
#### Customized special design products:

PNEUMAX engineering department will analyse every request for any specific application and will adapt or develop new components to meet the customer's needs. **Get in touch with us!**

The capacity of the intake chamber is 0.1 l.

The cylinder can be mounted to the service panel (RIP) for automated welding.

Not suitable for manual  
welding operations



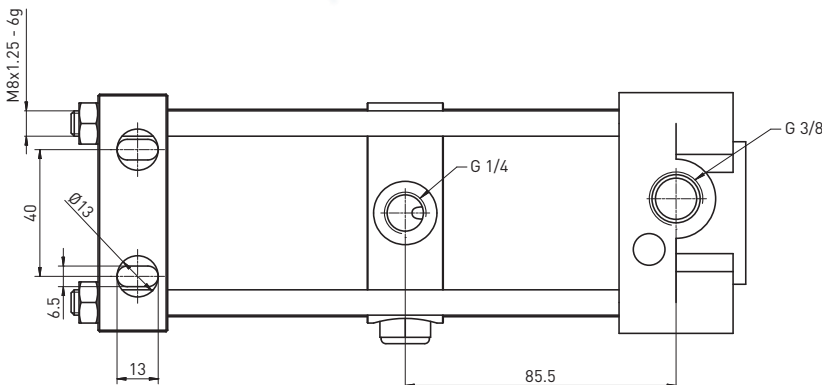
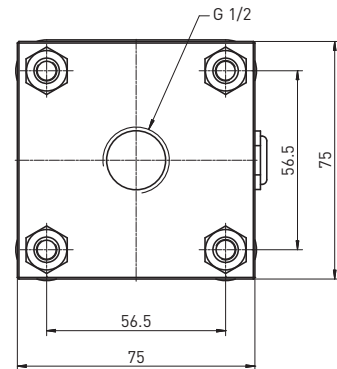
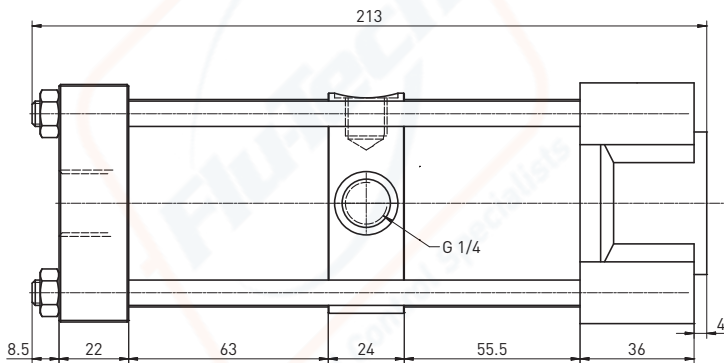
Piping for  
the connection  
to the welding gun

Intake chamber

Two chambers cylinder

#### PCY0050 / Cooling water intake cylinder

REV. 00 - 18/02/2015



COMPLEMENTARY PRODUCTS