

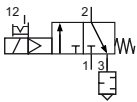
# 3/2-way inline valve VMK

## Technical details

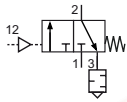
|                          |   |
|--------------------------|---|
| <b>Temperature range</b> | -10°C ... +60°C   |
| <b>Input range</b>       | electrically operated: 2 ... 10 bar<br>pneumatically operated: max. 16 bar                      |
| <b>Mounting</b>          | arbitrary   |
| <b>Medium</b>            | compressed air according to ISO 8573-1:2010, neutral gases                                      |
| <b>Materials</b>         | Body: zinc diecasting, seals: NBR,<br>inner parts: zinc coated steel, stainless steel and brass |
| <b>Schutzart</b>         | IP 65 according to EN 60529   |



3/2-way poppet valve, electrically or pneumatically operated.  
Silencer is mounted in exhaust.  
Plug socket is included.



electrically operated  
3/2-way, single solenoid, mechanical  
spring return, NC



pneumatically operated  
3/2-way, single pilot, mechanical  
spring return, NC

## Order code

| Series     |      | VMK-**-00-0-000* |  | Versions |                        |
|------------|------|------------------|--|----------|------------------------|
| Connection |      |                  |  | Digit 4  | Version                |
| 14         | G1/4 |                  |  | A        | 24 V DC, 3 W           |
|            |      |                  |  | D        | 115 V AC, 7.9 VA       |
|            |      |                  |  | E        | 230 V AC, 7.9 VA       |
|            |      |                  |  | F        | pneumatically operated |

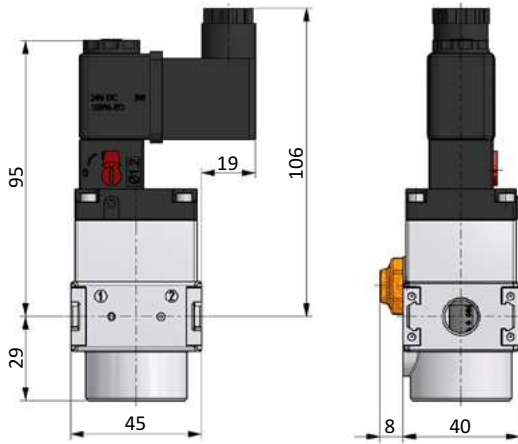
## Technical data

|                                 |            |
|---------------------------------|------------|
| <b>Model-no.:</b>               | VMK-14-... |
| <b>Connection</b>               | G1/4       |
| <b>Flow (1-2 in NI/min)</b>     | 1600       |
| <b>Weight(Version A-E) (kg)</b> | 0.46       |
| <b>Weight(Version F) (kg)</b>   | 0.54       |

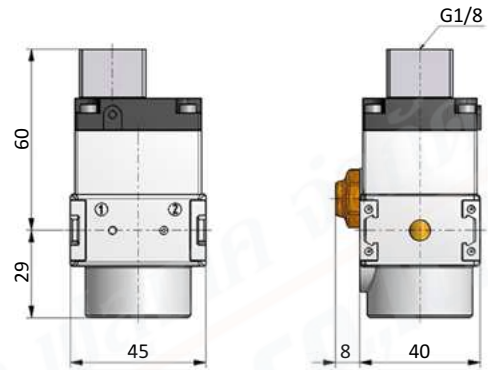
# 3/2-way inline valve VMK

## Dimensions

### electrically operated

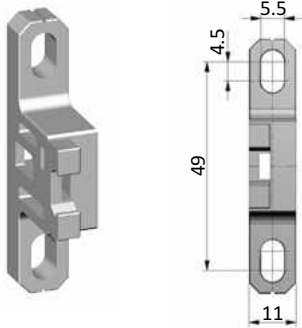


### pneumatically operated



**Mounting bracket WK-00**

Mounting bracket (set of two pieces) made of PA 66. Mounting only sidewise possible.

**WK-00**

**Coupling kit KPK**
**KPK-00**
