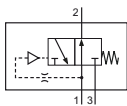


Technical details

Temperature range	-10°C ... +70°C
Medium	Filtered, oil-free and dried compressed air according to ISO 8573-1:2010, Class 7:2:4, instrument air, free of aggressive additives. Alternatively the pressure dew point must be at least 10°C below lowest occurring ambient temperature.
Materials	Body: Al (anodized), seals: NBR and POM, inner parts: Al, stainless steel and brass



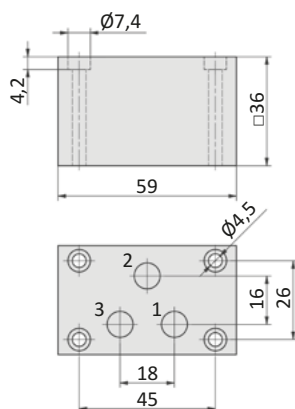
3/2-way one-shot valve. It converts a continuous pneumatic signal into a 0.3 s pulse.

3/2-way-valve


SU-18-310
signal interrupter,
3/2-way

Technical data

Model-no.:	SU-18-310
Connection	G1/8
Nominal size (mm)	5
Operating pressure (bar)	3 ... 10
Pilot pressure (bar)	3 ... 10
Duration of pulse (s)	0,3
Reset time (s)	0,1
Flow rate (NI/min)	480
Weight (kg)	0,192

Dimensions
SU-18-310


- 1 = pressure inlet
- 2 = outlets
- 3 = exhausts