

Technical details

Temperature range	-10°C ... +50°C
Medium	Filtered, oil-free and dried compressed air according to ISO 8573-1:2010, Class 7:2:4, instrument air, free of aggressive additives. Alternatively the pressure dew point must be at least 10°C below lowest occurring ambient temperature.
Materials	Body: Al (anodized), plastic, seals: NBR
Protection	IP 65 according to EN 60529



Manifold system with integrated electrical connection including LED indicators. Each station can accommodate two 3/2-way valves or one 5/2- or 5/3-way valve. All connections are accessible from the front. The valves and the multi-pin plug with cable must be ordered separately. The valve terminal is delivered pre-assembled and function-tested. If not specified with the order, valve configuration is as follows: Valves are mounted according to their order number, starting with high numbers at the side of the multi-pin, ending with low numbers on the opposite side, followed by blind plates (if ordered).

Order code

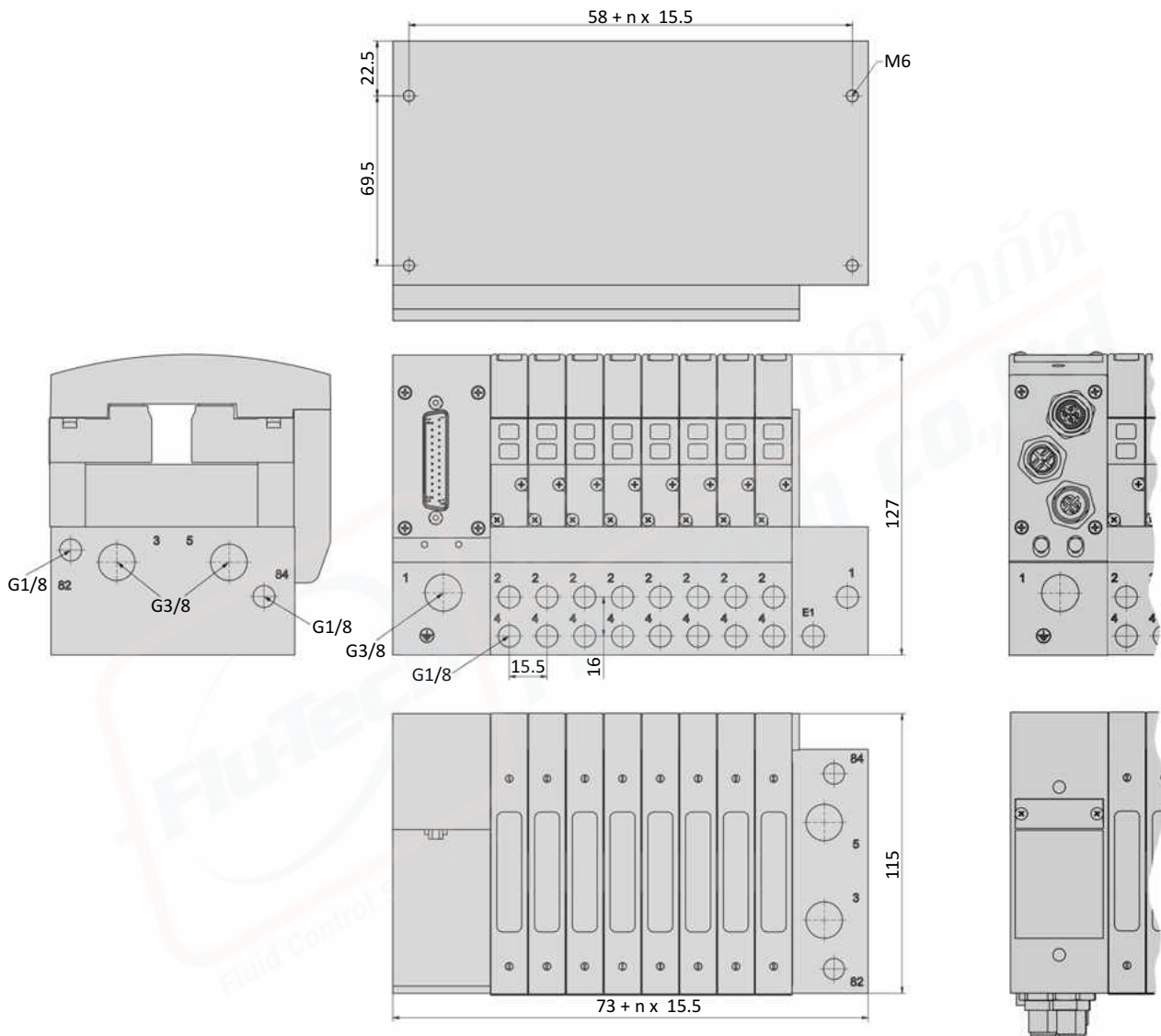
Series		RE-46/**-*-****-***		Pneumatical connections	
Number of stations				00 G1/8 at 2 and 4 G3/8 at 1	
04	4 stations			60 tube connection Ø 6 at 2 and 4 tube connection Ø 10 at 1	
06	6 stations			61 tube connection Ø 6 at 2 and 4 tube connection Ø 8 at 1	
08	8 stations			62 tube connection Ø 6 at 2 and 4 tube connection Ø 12 at 1	
10	10 stations			80 tube connection Ø 8 at 2 and 4 tube connection Ø 10 at 1	
12	12 stations			81 tube connection Ø 8 at 2 and 4 tube connection Ø 8 at 1	
14	14 stations			82 tube connection Ø 8 at 2 and 4 tube connection Ø 12 at 1	
16	16 stations				
18	18 stations				
20	20 stations				
22*	22 stations				
24*	24 stations				
* only for terminals with Bus connection				Pilot air	
				0 internal (standard)	
				E external	
Position of the pneumatic connection				Electrical options	
blank	at the side			M-1 Multi-pin	
G*	at the bottom			AS3 AS-Interface (only for 4, 8 and 12 stations)	
* only for 8, 12, 16 and 24 stations				B1-1 Profibus-DP	
				B6-1 CANopen	
				B7-1 Profinet-RT	
				B8-1* EtherCAT	
				* on request	



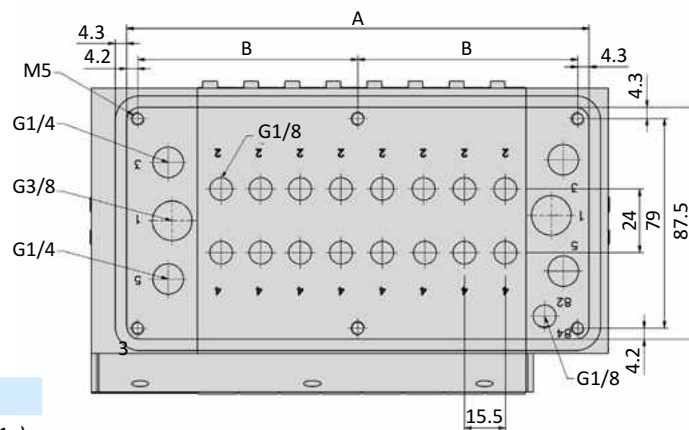
More detailed information about the installation you find in the manual at www.airtec.de.

Dimensions

Multi-pin, Bus connection



Version RE-46-G



Model-No.:	A	B
RE-46/08-G	174,5	83 (1x)
RE-46/12-G	236,5	76 (2x)
RE-46/16-G	298,5	72,5 (3x)
RE-46/24-G	422,5	82,8 (4x)

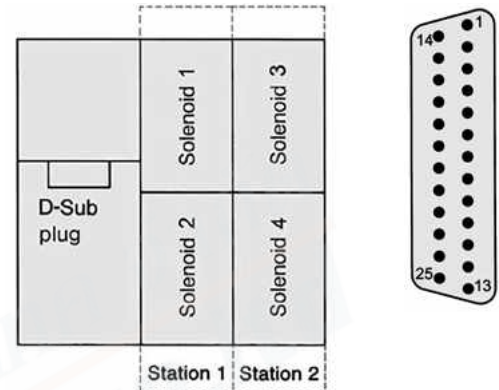
- 1 = pressure inlet
- 2,4 = outlets
- 3,5 = exhausts
- 82,84 = solenoid exhausts
- n = number of stations

Electrical options

Multi-pin, 2 up to 12 stations

The 25-pin multi plug (see page 7-19) has to be ordered separately.

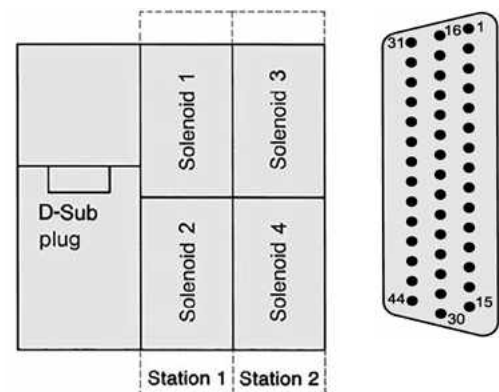
Pin	Function	Wire color	Pin	Function	Wire color
1	GND	white	14	solenoid 2	brown/ green
2	solenoid 1	brown	15	solenoid 4	white/ yellow
3	solenoid 3	green	16	solenoid 6	yellow/ brown
4	solenoid 6	yellow	17	solenoid 8	white/ grey
5	solenoid 7	grey	18	solenoid 10	grey/ brown
6	solenoid 9	pink	19	solenoid 12	white/ pink
7	solenoid 11	blue	20	solenoid 14	pink/ brown
8	solenoid 13	red	21	solenoid 16	white/ blue
9	solenoid 15	black	22	solenoid 18	brown/ blue
10	solenoid 17	violet	23	solenoid 20	white/ red
11	solenoid 19	grey/ pink	24	solenoid 22	brown/ red
12	solenoid 21	red/ blue	25	solenoid 24	white/ black
13	solenoid 23	white/ green			



Multi-pin, 14 up to 20 stations

The 44-pin multi plug (see page 7-19) has to be ordered separately.

Pin	Function	Wire color	Pin	Function	Wire color
1	GND	white	23	solenoid 20	white/ red
2	solenoid 3	brown	24	solenoid 23	brown/ red
3	solenoid 5	green	25	solenoid 26	white/ black
4	solenoid 9	yellow	26	solenoid 29	brown/ black
5	solenoid 12	grey	27	solenoid 32	grey/ green
6	solenoid 15	pink	28	solenoid 35	yellow/ grey
7	solenoid 18	blue	29	solenoid 38	pink/ green
8	solenoid 21	red	30	-	yellow/ pink
9	solenoid 24	black	31	solenoid 1	green/ blue
10	solenoid 27	violet	32	solenoid 4	yellow/ blue
11	solenoid 30	grey/ pink	33	solenoid 7	green/ red
12	solenoid 33	red/ blue	34	solenoid 10	yellow/ red
13	solenoid 36	white/ green	35	solenoid 13	green/ black
14	solenoid 39	brown/ green	36	solenoid 16	yellow/ black
15	-	white/ yellow	37	solenoid 19	grey/ blue
16	GND	yellow/ brown	38	solenoid 22	pink/ blue
17	solenoid 2	white/ grey	39	solenoid 25	grey/ red
18	solenoid 5	grey/ brown	40	solenoid 28	pink/ red
19	solenoid 8	white/ pink	41	solenoid 31	grey/ black
20	solenoid 11	pink/ brown	42	solenoid 34	pink/ black
21	solenoid 14	white/ blue	43	solenoid 37	blue/ black
22	solenoid 17	brown/ blue	44	solenoid 40	red/ black



AS-Interface

Bus connector	AS-Interface connector
Power connector	AS-Interface connector
Bus-Voltage	18.5 ... 31.6 V DC
Power-Voltage	24 V DC \pm 10%
Address selection	Low voltage switch plug \varnothing 1.3 mm, slave selection by DIP-switch



Electrical options

Profibus-DP

Bus connector	Bus In: plug M12 5-pin B-code Bus Out: socket M12 5-pin B-code
Power connector	plug M12 5-pin A-code
Baud rate	9.6 Kbit/s ... 12 Mbit/s, automatic adjustment
Voltage	24 V DC \pm 10%
Power consumption	2.9 W
Address selection	by 2 decimal coded rotary switches.
Bus terminal resistance	external over Bus Out socket



CANopen

Bus connector	Bus In: plug M12 5-pin A-code Bus Out: socket M12, 5-pin, A-code
Power connector	plug M12 5-pin A-code
Baud rate	10 Kbit/s ... 1 Mbit/s
Voltage	24 V DC \pm 10%
Power consumption	2.9 W
Address selection	by 2 decimal coded rotary switches.
Bus terminal resistance	external over Bus Out socket



Profinet-RT

Bus connector	Bus In: socket M12, 4-pin, D-code Bus Out: socket M12, 4-pin, D-code
Power connector	plug M12 5-pin A-code
Baud rate	100 Mbit/s, full duplex
Voltage	24 V DC \pm 10%
Power consumption	3.6 W
Address selection	by controller-remote



EtherCAT

Bus connector	Bus In: socket M12, 4-pin, D-code Bus Out: socket M12, 4-pin, D-code
Power connector	plug M12 5-pin A-code
Baud rate	100 Mbit/s, full duplex
Voltage	24 V DC \pm 10%
Power consumption	3.5 W

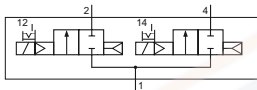


Technical details

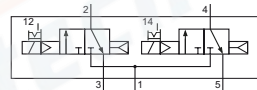
Outlets	according to the pneumatically connections of the terminal
Temperature range	-10°C ... +50°C
Medium	Filtered, oil-free and dried compressed air according to ISO 8573-1:2010, Class 7:2:4, instrument air, free of aggressive additives. Alternatively the pressure dew point must be at least 10°C below lowest occurring ambient temperature.
Materials	Body: Al (anodized), plastic, seals: NBR, inner parts: Al, stainless steel and brass
Nominal voltage	24 V DC, ± 10%
Power consumption	1.3 W
Protection	IP 65 according to EN 60529



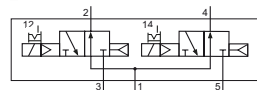
Electrically operated spool valve. The manual override is non-detent. The manual override is located on top of the valve cover.

2/2-way-valve


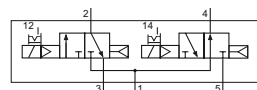
KF-46-210/2-HN-S12
2 x 2/2-way, single solenoid, air spring return, NC

2 x 3/2-way-valves


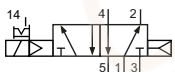
KF-46-310/2-HN-S12
2 x 3/2-way, single solenoid, air spring return, NC



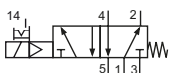
KF-46-312/2-HN-S12
2 x 3/2-way, single solenoid, air spring return, NO



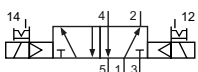
KF-46-314/2-HN-S12
2 x 3/2-way, single solenoid, air spring return, 1 x NC, 1 x NO

5/2-way-valves


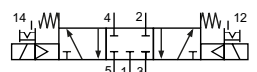
KF-46-510-HN-S12
5/2-way, single solenoid, air spring return



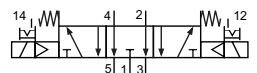
KF-46-511-HN-S12
5/2-way, single solenoid, mechanical spring return



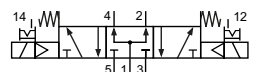
KF-46-520-HN-S12
5/2-way, double solenoid

5/3-way-valves


KF-46-530-HN-S12
5/3-way, center position closed



KF-46-533-HN-S12
5/3-way, center position exhausted



KF-46-534-HN-S12
5/3-way, center position pressurized

Technical data

Model-no.:	KF-46-210/2-HN-S12	KF-46-310/2-HN-S12	KF-46-312/2-HN-S12	KF-46-314/2-HN-S12
Operating pressure (bar)	2.5...8	2.5...8	2.5...8	2.5...8
Pilot pressure (bar) *	2.5...8	2.5...8	2.5...8	2.5...8
Nominal size (mm)	4.5	4.5	4.5	4.5
Flow rate (NI/min)	430	430	630	430 / 630 (NC / NO)
Response time (ms) at 6 bar	on: 15 off: 28	on: 15 off: 28	on: 15 off: 28	on: 15 off: 28
Weight (kg)	0.188	0.188	0.188	0.188

* Valves are not suitable for external pilot supply.

Series RE-46








Technical data

Model-no.:	KF-46-510-HN-S12	KF-46-511-HN-S12	KF-46-520-HN-S12
Internal pilot pressure			
Operating pressure (bar)	2.5...8	2.5...8	2.5...8
Pilot pressure (bar)	2.5...8	2.5...8	2.5...8
External pilot pressure			
Operating pressure (bar)	- *	0...10	0...10
Pilot pressure (bar)	- *	3...8	3...8
Nominal size (mm)	6	6	6
Flow rate (NI/min)	950	810	950
Response time (ms) at 6 bar	on: 15 off: 31	on: 14 off: 33	on: 20 off: 20
Weight (kg)	0.158	0.158	0.188

* Valves are not suitable for external pilot supply.

Model-no.:	KF-46-530-HN-S12	KF-46-533-HN-S12	KF-46-534-HN-S12
Internal pilot pressure			
Operating pressure (bar)	3...8	3...8	3...8
Pilot pressure (bar)	3...8	3...8	3...8
External pilot pressure			
Operating pressure (bar)	0...10	0...10	0...10
Pilot pressure (bar)	3...8	3...8	3...8
Nominal size (mm)	6	6	6
Flow rate (NI/min)	680	680	680
Response time (ms) at 6 bar	on: 20 off: 30	on: 20 off: 30	on: 20 off: 30
Weight (kg)	0.188	0.188	0.188

Accessories

Model-no.:	RE-19-DT	Model-no.:	28-ST-46-M1-yy-xxx
	Pressure dividing plug		25- or 44-pin multi plug, straight yy = 25 25-pin yy = 44 44-pin xxx = 105 5 m cable xxx = 110 10 m cable
Model-no.:	RE-46-RSV	Model-no.:	28-ST-146-M1-yy-xxx
	Check valve		25- or 44-pin multi plug, 90° yy = 25 25-pin yy = 44 44-pin xxx = 105 5 m cable xxx = 110 10 m cable
Model-no.:	RE-46-B-01	Model-no.:	28-ST-RE-46-xx-yy
	Mounting bracket (pair)		Connector kit xx = 01 in- and output xx = 02 with termination resistance yy = B1 Profibus yy = B6 CANopen
Model-no.:	RE-x6-V-EP		
	x = 1 Blind plate, set x = 4 Blind plate for valve and coil station		