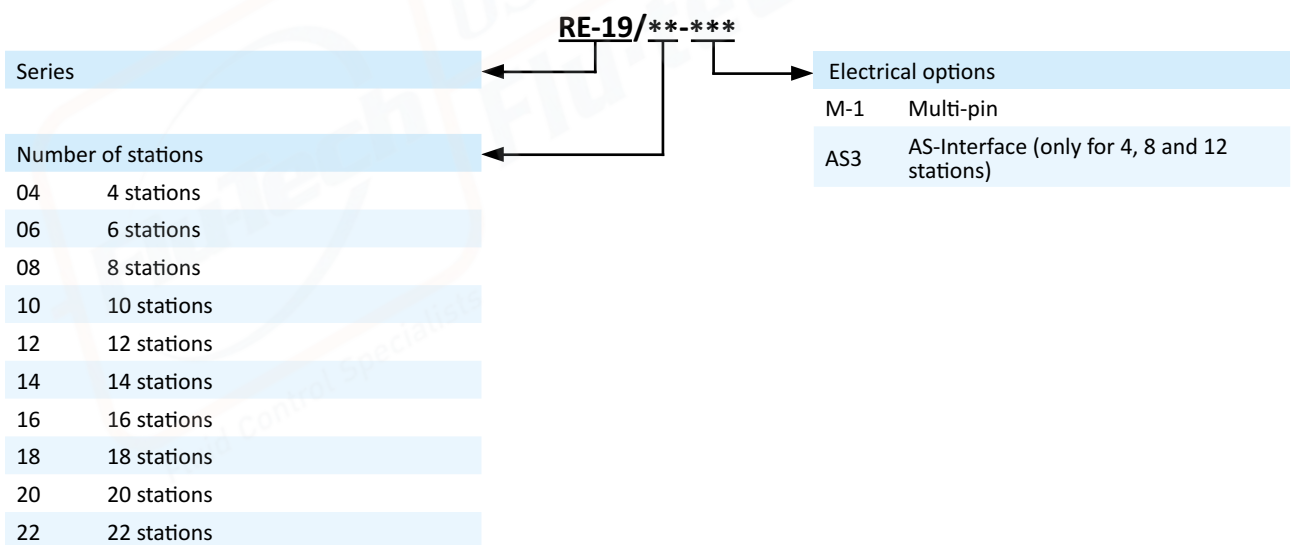


**Technical details**

<b>Temperature range</b>	-10°C ... +50°C
<b>Medium</b>	Filtered, oil-free and dried compressed air according to ISO 8573-1:2010, Class 7:2:4, instrument air, free of aggressive additives. Alternatively the pressure dew point must be at least 10°C below lowest occurring ambient temperature.
<b>Materials</b>	Body: Al (anodized), seals: NBR
<b>Protection</b>	IP 65 according to EN 60529



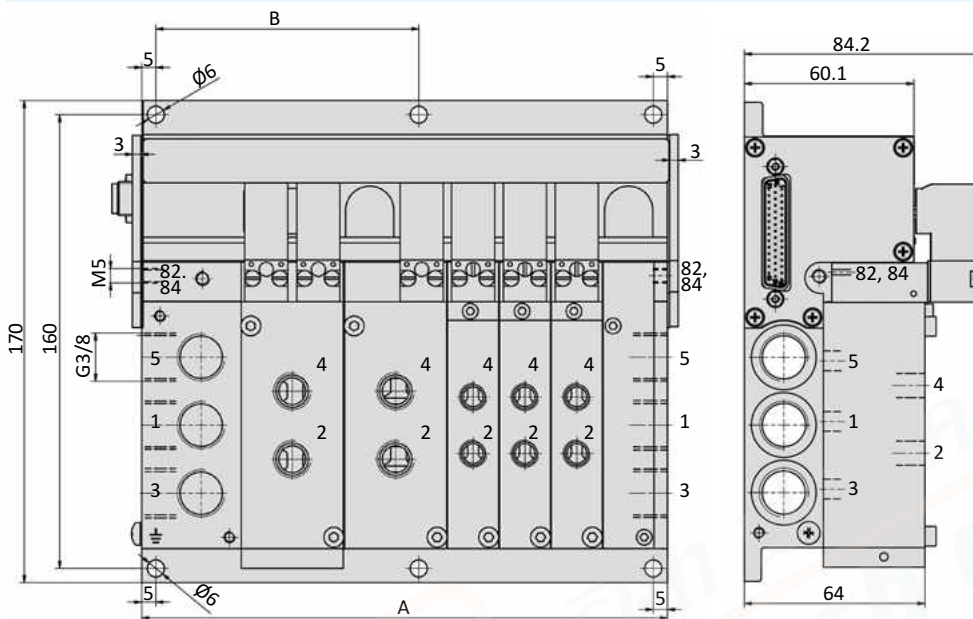
Manifold system with integrated electrical connection including LED indicators, manual override and built-in circuit protection. Valves with connection G1/4 require 2 stations on the manifold. The above order code covers only the manifold. The multi-pin plug with cable must be ordered separately. The valve terminal is delivered pre-assembled and function-tested. If not specified with the order, valve configuration is as follows: Valves are mounted according to their order number, starting with high numbers at the side of the multi-pin, ending with low numbers on the opposite side, followed by blind plates (if ordered).

**Order code**


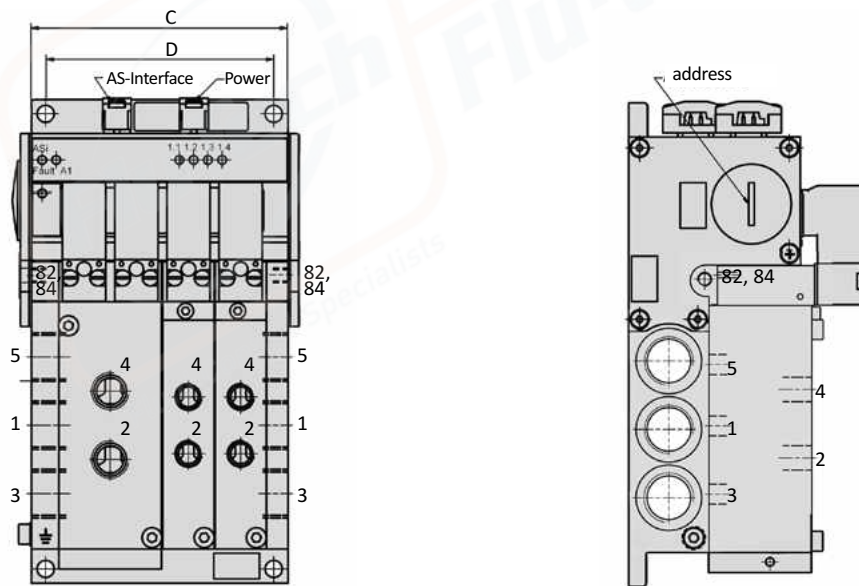
More detailed information about the installation you find in the manual at [www.airtec.de](http://www.airtec.de).

## Dimensions

### Multi-pin



### AS-Interface



- 1 = pressure inlet
- 2,4 = outlets
- 3,5 = exhausts
- 82,84 = solenoid exhausts

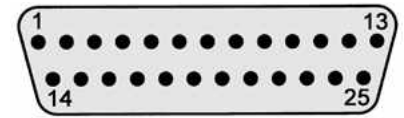
Model-no.:	A	B	Weight without valves (kg)
RE-19/04-M-1	113	-	0.93
RE-19/06-M-1	149	-	1.26
RE-19/08-M-1	186	-	1.59
RE-19/10-M-1	222	-	1.92
RE-19/12-M-1	259	129.5	2.25
RE-19/14-M-1	295	147.5	2.58
RE-19/16-M-1	332	166	2.91
RE-19/18-M-1	369	184.5	3.24
RE-19/20-M-1	405	202.5	3.57
RE-19/22-M-1	442	221	3.90

Model-no.:	C	D	Weight without valves (kg)
RE-19/04-AS3	96	80	0.82
RE-19/08-AS3	165	155	1.48
RE-19/12-AS3	228	238	2.14

**Electrical options**
**Multi-pin**





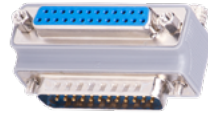
The 25-pin multi plug (see page 7-07) has to be ordered separately.

Pin	Function	Wire colour	Pin	Function	Wire colour
1	valve 1	white	14	valve 14	brown/ green
2	valve 2	brown	15	valve 15	white/ yellow
3	valve 3	green	16	valve 16	yellow/ brown
4	valve 4	yellow	17	valve 17	white/ grey
5	valve 5	grey	18	valve 18	grey/ brown
6	valve 6	pink	19	valve 19	white/ pink
7	valve 7	blue	20	valve 20	pink/ brown
8	valve 8	red	21	valve 21	white/ blue
9	valve 9	black	22	valve 22	brown/ blue
10	valve 10	violet	23	GND	white/ red
11	valve 11	grey/ pink	24	GND	brown/ red
12	valve 12	red/ blue	25	GND	white/ black
13	valve 13	white/ green			


**AS-Interface**

<b>Bus connector</b>	AS-Interface connector
<b>Power connector</b>	AS-Interface connector
<b>Bus-Voltage</b>	18.5 ... 31.6 V DC
<b>Power-Voltage</b>	24 V DC $\pm$ 10%
<b>Address selection</b>	Each IC slave (max. 4 valves) 1 programming socket = 1 address


**Accessories**

<b>Model-no.:</b>	RE-19-DT	<b>Model-no.:</b>	28-ST-68-M-xxx
	Pressure dividing plug		25-pin multi plug, straight
<b>Model-no.:</b>	RE-19-V-EP	xxx = 105	5 m cable
	Blind plate	xxx = 110	10 m cable
<b>Model-no.:</b>	RE-19-V-EP-01	<b>Model-no.:</b>	28-ST-M25-12-ADA-01
	Blind plate		Elbow 90°, Multi-pin-D-Sub, 25-pins

# Series RE-19

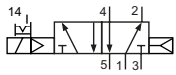
## Technical details

<b>Outlets</b>	G1/8, G1/4
<b>Temperature range</b>	-10°C ... +50°C
<b>Medium</b>	Filtered, oil-free and dried compressed air according to ISO 8573-1:2010, Class 7:2:4, instrument air, free of aggressive additives. Alternatively the pressure dew point must be at least 10°C below lowest occurring ambient temperature.
<b>Materials</b>	Body: Al (anodized), seals: NBR, inner parts: Al, stainless steel and brass
<b>Nominal voltage</b>	24 V DC, ± 10%
<b>Power consumption</b>	1 W
<b>Protection</b>	IP 65 according to EN 60529

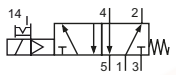


Electrically operated pool valve. The manual override is non-detent or detent and is operated by bolt or screw driver.

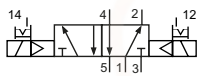
### 5/2-way-valves



KF-09-510-HNx-442  
KF-10-510-HNx-442  
5/2-way, single solenoid, air spring return

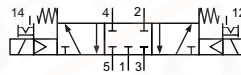


KF-09-511-HNx-442  
KF-10-511-HNx-442  
5/2-way, single solenoid, mechanical spring return

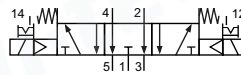


KF-10-520-HNx-442  
5/2-way, double solenoid

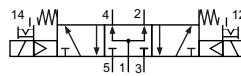
### 5/3-way-valves



KF-10-530-HNx-442  
5/3-way, center position closed



KF-10-533-HNx-442  
5/3-way, center position exhausted



KF-10-534-HNx-442  
5/3-way, center position pressurized

Please complete: x = manual override ( R = detent, T = non-detent)

## Technical data

Model-no.:	KF-09-510-HNx-442	KF-09-511-HNx-442	KF-10-510-HNx-442	KF-10-511-HNx-442
<b>Required space</b>	1 station	1 station	2 stations	2 stations
<b>Outlets</b>	G1/8	G1/8	G1/4	G1/4
<b>Operating pressure (bar)</b>	3...8	3...8	2.5...8	2.5...8
<b>Pilot pressure (bar)</b>	3...8	3...8	2.5...8	2.5...8
<b>Nominal size (mm)</b>	6	6	9	9
<b>Flow rate (NI/min)</b>	950	810	2100	1800
<b>Response time (ms) at 6 bar</b>	on: 11 off: 20	on: 10 off: 26	on: 13 off: 26	on: 18 off: 29
<b>Weight (kg)</b>	0.200	0.200	0.370	0.370

Model-no.:	KF-10-520-HNx-442	KF-10-530-HNx-442	KF-10-533-HNx-442	KF-10-534-HNx-442
<b>Required space</b>	2 stations	2 stations	2 stations	2 stations
<b>Outlets</b>	G1/4	G1/4	G1/4	G1/4
<b>Operating pressure (bar)</b>	2.5...8	3...8	3...8	3...8
<b>Pilot pressure (bar)</b>	2.5...8	3...8	3...8	3...8
<b>Nominal size (mm)</b>	9	9	9	9
<b>Flow rate (NI/min)</b>	2100	1500	1500	1500
<b>Response time (ms) at 6 bar</b>	on: 16 off: 16	on: 16 off: 26	on: 16 off: 26	on: 16 off: 26
<b>Weight (kg)</b>	0.430	0.430	0.430	0.430

Please complete: x = manual override ( R = detent, T = non-detent)