

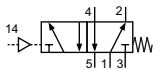
## Technical details

|                          |   |
|--------------------------|---|
| <b>Connection</b>        | PKX-09: G1/8<br>PKX-10: G1/4  |
| <b>Nominal size</b>      | PKX-09: 6 mm<br>PKX-10: 9 mm  |
| <b>Temperature range</b> | -30°C ... +80°C   |
| <b>Medium</b>            | Filtered, oil-free and dried compressed air according to ISO 8573-1:2010, Class 7:2:4, instrument air, free of aggressive additives. Differing the pressure dew point must be at least 10°C below lowest occurring ambient temperature. |
| <b>Materials</b>         | Body: stainless steel 1.4571, seals: FKM and PU, inner parts: stainless steel 1.4305  |
| <b>Protection</b>        | IP 65 according to EN 60529   |
|                          | Valves in accordance with 2014/34/EU (ATEX) available. (Chapter 13)   |

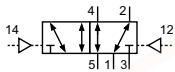


Pneumatically operated pool valve. The valve switches upon pressurization of the pilot port.

### 5/2-way-valves

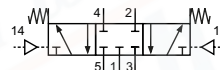


PKX-09-511  
PKX-10-511  
5/2-way, single pilot, mechanical spring return



PKX-09-520  
PKX-10-520  
5/2-way, double pilot

### 5/3-Wege-Ventil



PKX-10-530  
5/3-way, center position closed

## Technical data

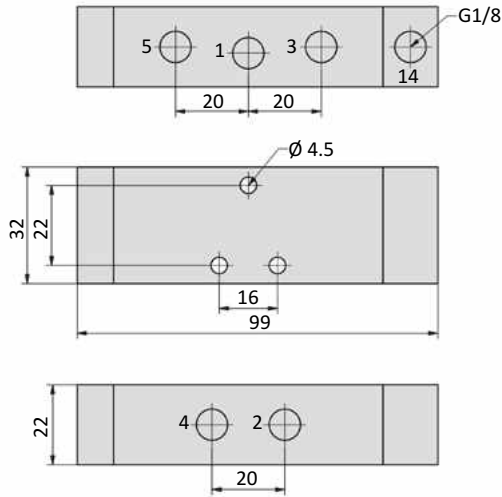
| Model-no.:                      | PKX-09-511 | PKX-09-520 | PKX-10-511 | PKX-10-520 | PKX-10-530 |
|---------------------------------|------------|------------|------------|------------|------------|
| <b>Operating pressure (bar)</b> | 3 ... 8    | 3 ... 8    | 3 ... 8    | 3 ... 8    | 3 ... 8    |
| <b>Pilot pressure (bar)</b>     | 3 ... 8    | 3 ... 8    | 3 ... 8    | 3 ... 8    | 3 ... 8    |
| <b>Flow rate (NI/min)</b>       | 1080       | 1110       | 1980       | 1920       | 1770       |
| <b>Weight (kg)</b>              | 0.450      | 0.460      | 1.120      | 1.170      | 1.160      |

# Series PKX-09 and PKX-10

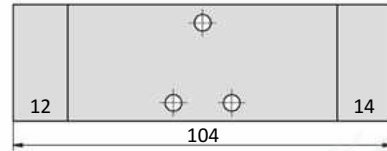


## Dimensions

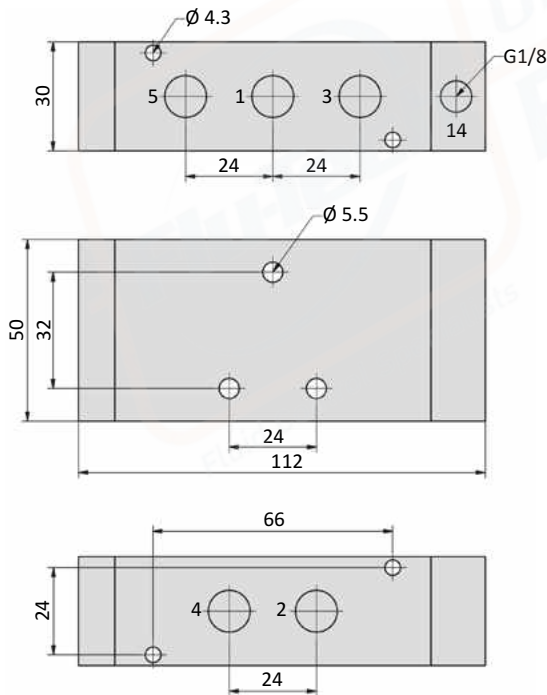
### PKX-09-511



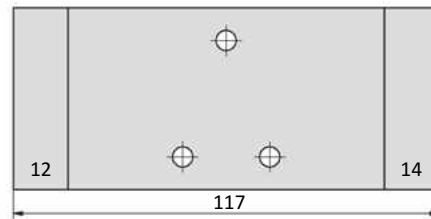
### PKX-09-520



### PKX-10-511



### PKX-10-520, PKX-10-530



- 1 = pressure inlet
  - 2,4 = outlets
  - 3,5 = exhausts
  - 12,14 = pilot ports
- Pilot ports can be repositioned by 180°.

