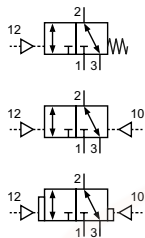


**Technical details**

<b>Connection</b>	G1/2
<b>Nominal size</b>	14 mm
<b>Temperature range</b>	-10°C ... +70°C
<b>Medium</b>	Filtered, oil-free and dried compressed air according to ISO 8573-1:2010, Class 7:2:4, instrument air, free of aggressive additives. Differing the pressure dew point must be at least 10°C below lowest occurring ambient temperature.
<b>Materials</b>	Body: Al (anodized), seals: NBR and POM, inner parts: Al, brass, stainless steel
	Valves in accordance with 2014/34/EU (ATEX) available. (Chapter 13)



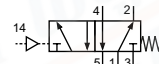
Pneumatically operated spool valve. The valve switches upon pressurization of the pilot port.

**3/2-way valves**


**P-12-311**  
3/2-way, single pilot, mechanical spring return

**P-12-320**  
3/2-way, double pilot

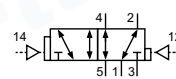
**P-12-322**  
3/2-way, double pilot, one side dominant

**5/2- and 5/3-way valves**


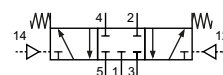
**P-12-511**  
5/2-way, single pilot, mechanical spring return



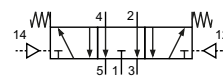
**P-12-520**  
5/2-way, double pilot



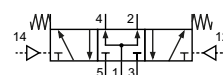
**P-12-522**  
5/2-way, double pilot, one side dominant



**P-12-530**  
5/3-way, center position closed



**P-12-533**  
5/3-way, center position exhausted



**P-12-534**  
5/3-way, center position pressurized

**Technical data**

Model-no.:	P-12-311	P-12-320	P-12-322			
<b>Operating pressure (bar)</b>	1 ... 10	0 ... 10	0 ... 10			
<b>Pilot pressure (bar)</b>	2 ... 10	1 ... 10	1 ... 10			
<b>Flow rate (NI/min)</b>	3300	3300	3300			
<b>Weight (kg)</b>	0.830	0.855	0.855			

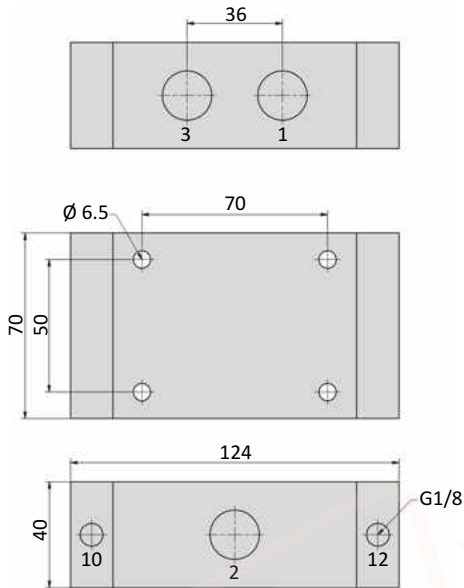
  

Model-no.:	P-12-511	P-12-520	P-12-522	P-12-530	P-12-533	P-12-534
<b>Operating pressure (bar)</b>	0 ... 10	0 ... 10	0 ... 10	0 ... 10	0 ... 10	0 ... 10
<b>Pilot pressure (bar)</b>	2 ... 10	1 ... 10	1 ... 10	3 ... 10	3 ... 10	3 ... 10
<b>Flow rate (NI/min)</b>	3300	3300	3300	3300	3300	3300
<b>Weight (kg)</b>	1.065	1.080	1.080	1.080	1.080	1.080

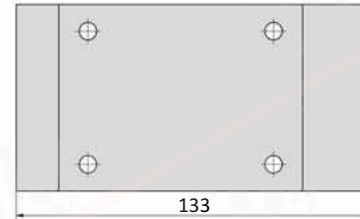
## Series P-12

### Dimensions

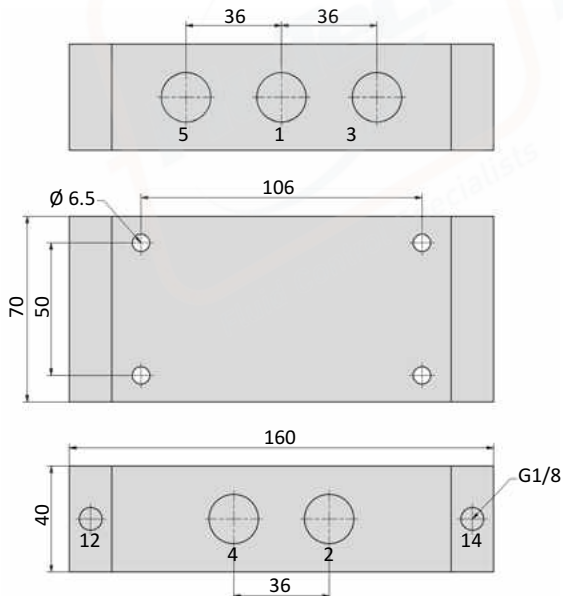
#### P-12-311, P-12-320



#### P-12-322



#### P-12-511, P-12-520, P-12-53x



#### P-12-522



- 1 = pressure inlet
  - 2,4 = outlets
  - 3,5 = exhausts
  - 10,12,14 = pilot ports
- Pilot ports can be repositioned by 180°.