

## Pressure boosters 90-PB

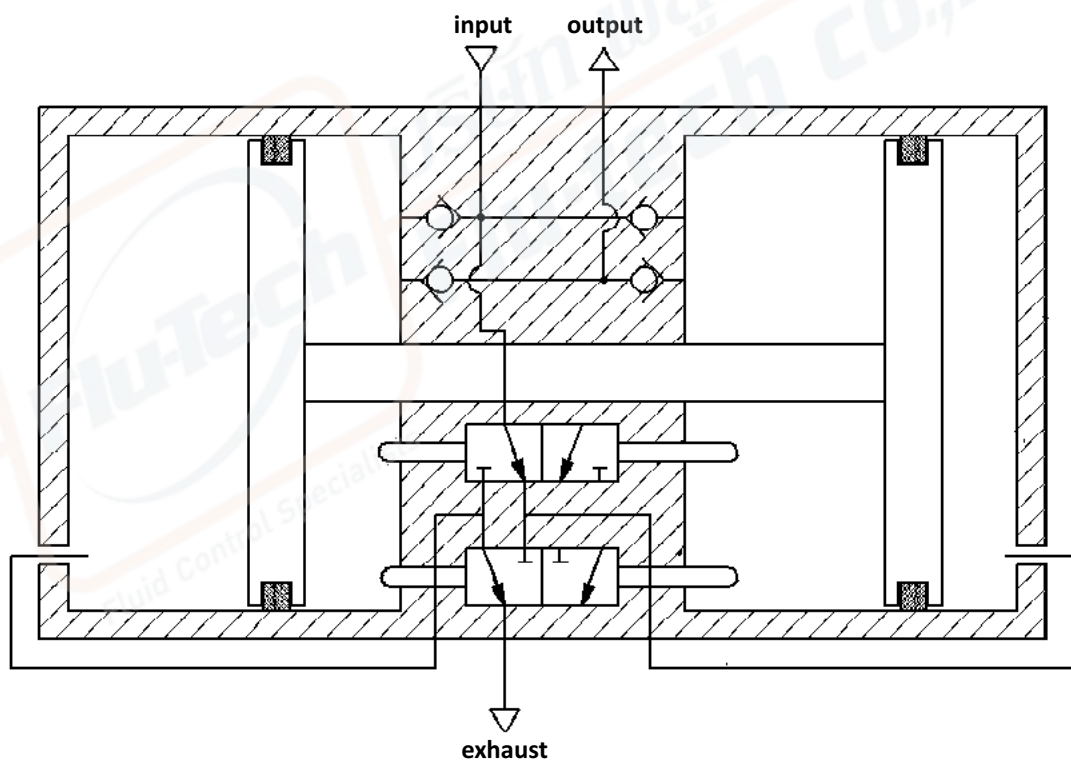
### Technical details

<b>Temperature range</b>	-40°C ... +80°C
<b>Input range</b>	1.5...10 bar
<b>Mounting</b>	arbitrary
<b>Medium</b>	compressed air according to ISO 8573-1:2010
<b>Materials</b>	Body: Al (anodized), seals: NBR, inner parts: steel (zinc plated), stainless steel and brass



Twin-piston pressure intensifier suitable only for compressed air.  
The output pressure can increase to up to 1.8-fold the value of the supply input pressure.

### Function



The Pressure booster 90-PB is suitable only for compressed air.  
When the DPA is pressurised with compressed air, integrated non-return valves automatically facilitate pressure build up on the secondary side. The pressure booster starts automatically when the supply pressure is applied and the desired output pressure has not yet been reached.  
Pressure boosters are not suitable as a replacement for compressors, as wear on seals and drive pistons increases significantly during continuous operation without breaks.

## Pressure boosters 90-PB

### Order code

90-PB-***-***-		Series	Versions
			0 basic version
			1 with pressure regulator and gauges
			2 with pressure regulator and gauges, with air reservoir (volume 5l), safety valve, fittings and quick coupling
		Piston Ø	
		050 50 mm	
		Amplification	
		18 1.8-fold	

### Technical Data

Model-No.:	90-PB-050-18
Piston-Ø (mm)	50
Amplification factor	1.8
Connection	G1/4

### 90-PB-050-18-1





# Pressure boosters 90-PB

## Dimensions 90-PB-050-18-0

