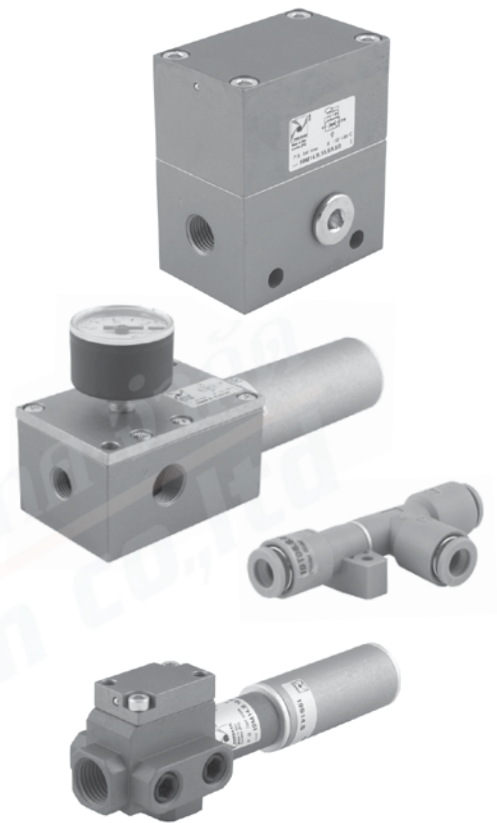


# Single stage vacuum generators

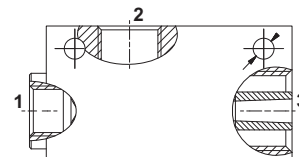
Single stage generators, robust reliable and compact suitable for applications which need the required degree of vacuum to be reached quickly with high flow rates.



VACUUM GENERATORS

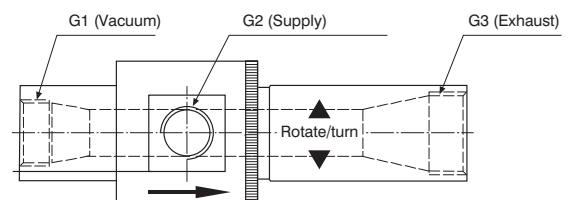
## Performance and application

The single stage vacuum generator operates using the Venturi principle. By feeding compressed air into port 1 of the generator, a depression (Vacuum) is generated at port 2 with the air being drawn from port 2 discharged out at port 3. When the compressed supply to port 1 is interrupted, the suction (Vacuum) at port 2 is lost. The optimum inlet pressure is different for each type of single stage generator which ranges from 1 - 6 bar. These generator are generally used in conjunction with suction cups for gripping and the handling of porous and non-porous objects with limited suction flow required.



## Adjustable version

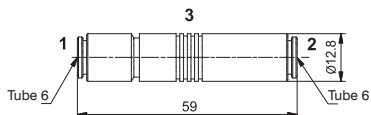
Based on the Venturi principle, these differ from traditional ones, infact they have an ejector with a much larger diameter, and are adjustable. This feature makes possible to change the device's flow rate and degree of vacuum without affecting the inlet pressure.





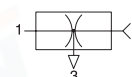
## Series 1900

### Single stage vacuum generator T06



Ordering code

19T06.S.05.HV.C0

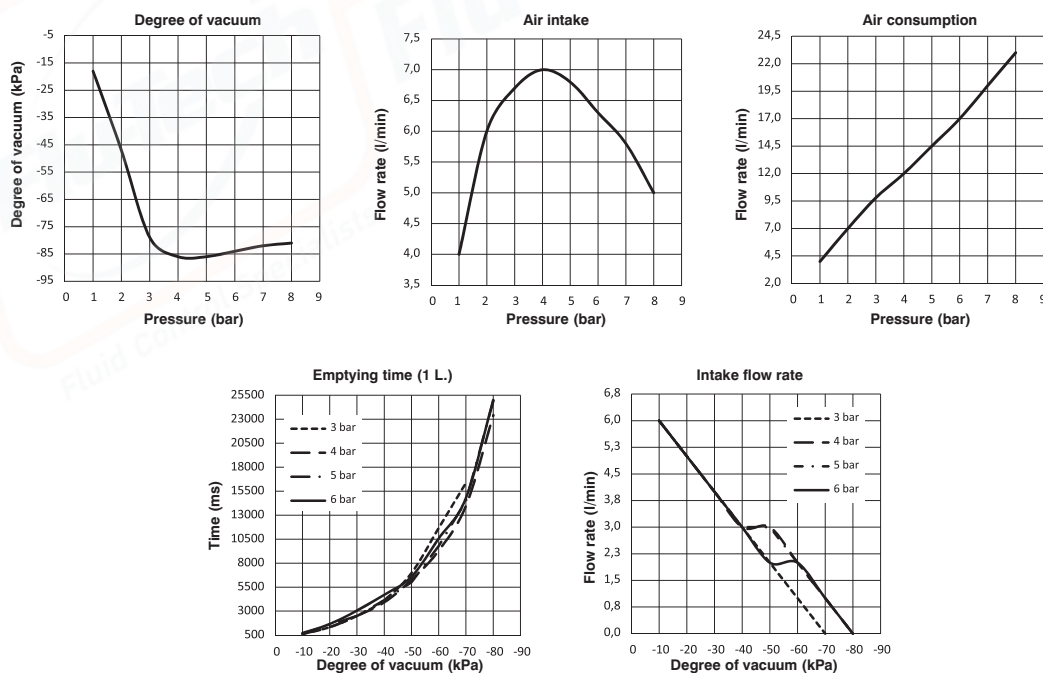


Single stage generators, with operation based on the Venturi principle; their main feature is the presence of feed pressure and connection for the vacuum on the same axis. This makes it possible to connect the suction cups directly to the generator or through the suction cup holder, so therefore still on the same axis with advantages in terms of system layout and simplicity.

#### Operational characteristics

- Inlet pressure (bar)	2	4	6
- Degree of Vacuum (-kPa)	47	86	84
- Intake flow rate (l/min)	6	7	6
- Air consumption (l/min)	7	12	17

Performance Charts



#### Technical characteristics

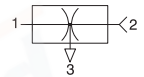
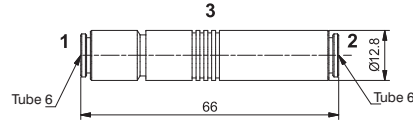
Fluid	Unlubricated filtered air
Pressure (bar)	1 ... 8
Temperature (°C)	-10 ... +80
Weight (gr.)	7
Noise (dBA)	68

VACUUM GENERATORS



Single stage vacuum generator T06

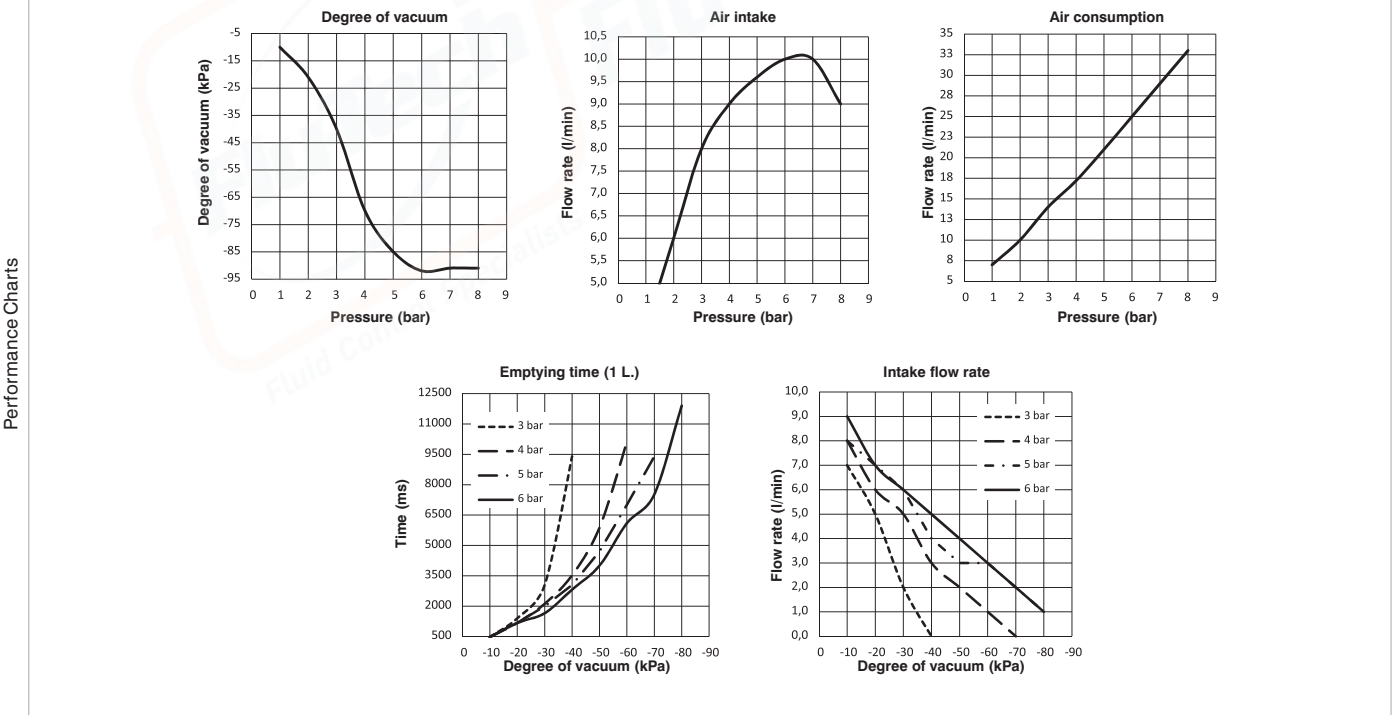
Ordering code
<b>19T06.S.07.HV.C0</b>



Single stage generators, with operation based on the Venturi principle; their main feature is the presence of feed pressure and connection for the vacuum on the same axis. This makes it possible to connect the suction cups directly to the generator or through the suction cup holder, so therefore still on the same axis with obvious advantages in terms of system layout and simplicity.

Operational characteristics

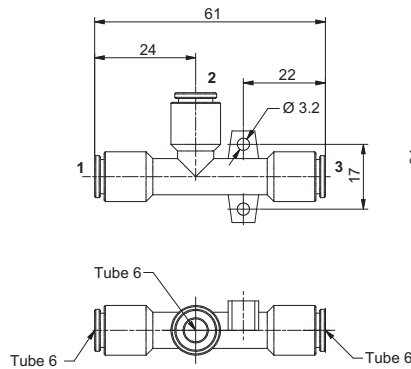
- Inlet pressure (bar)	2	4	6
- Degree of Vacuum (-kPa)	21	70	92
- Intake flow rate (l/min)	6	9	10
- Air consumption (l/min)	10	17	25



Technical characteristics

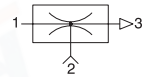
Fluid	Unlubricated filtered air
Pressure (bar)	1 ... 8
Temperature (°C)	-10 ... +80
Weight (gr.)	8
Noise (dBA)	68

Single stage vacuum generator T06



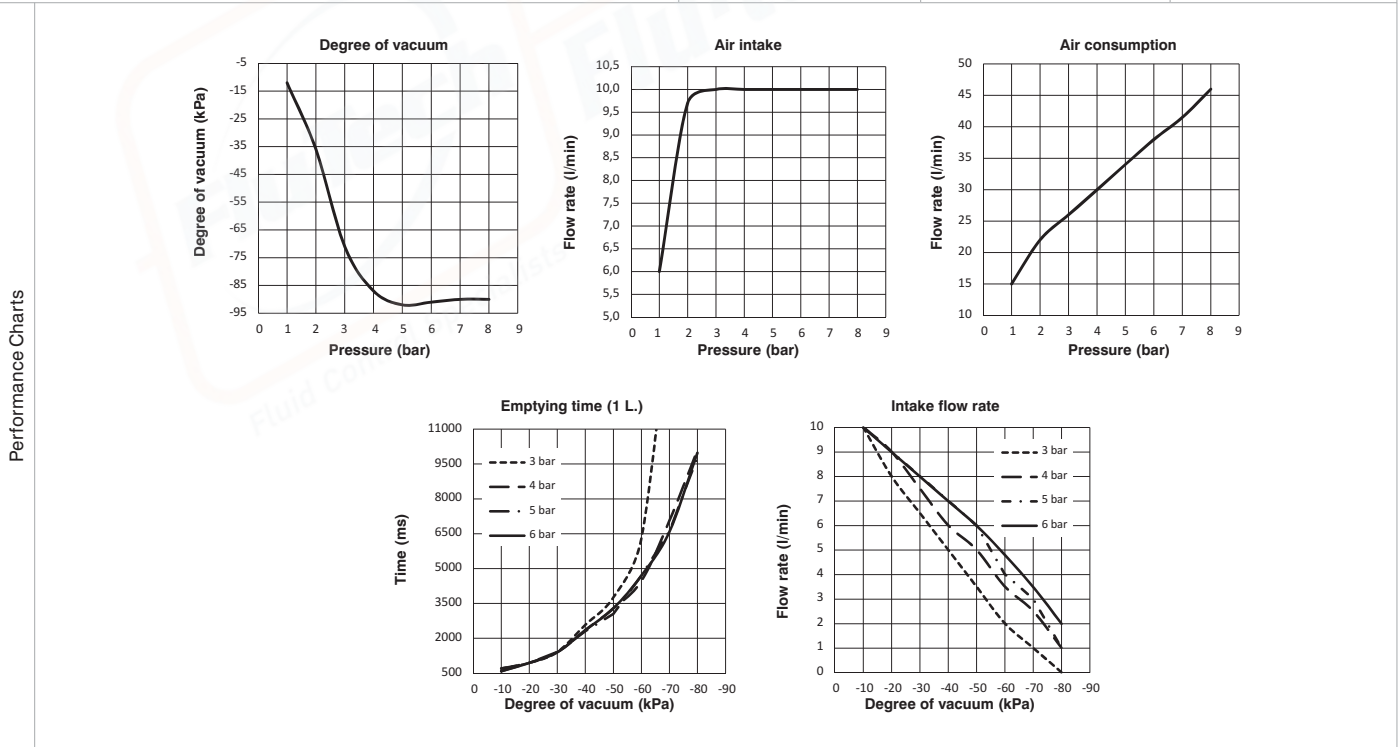
Ordering code

19T06.S.07.HV.ZZ



Single stage generators, robust and reliable, with compact dimensions and suitable for applications that need the required degree of vacuum to be reached quickly with limited air flows. Operating on the Venturi principle they have the vacuum connection orthogonal to the axis of supply and outlet. They can be connected directly to the suction cups and/or suction cup holder and can be applied in any position.

Operational characteristics	2	4	6
- Inlet pressure (bar)	2	4	6
- Degree of Vacuum (-kPa)	36	87	91
- Intake flow rate (l/min)	10	10	10
- Air consumption (l/min)	22	30	38

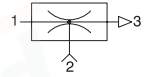
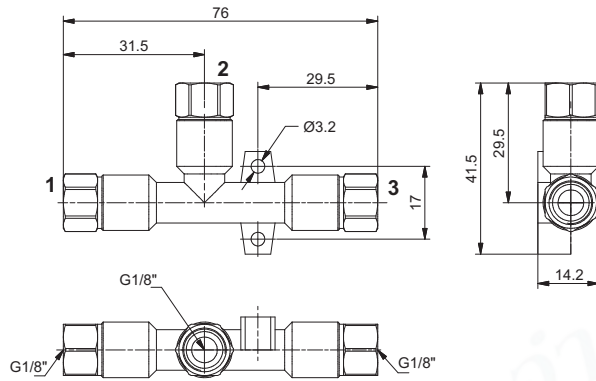


Technical characteristics	
Fluid	Unlubricated filtered air
Pressure (bar)	1 ... 8
Temperature (°C)	-10 ... +80
Weight (gr.)	12
Noise (dBA)	76

VACUUM GENERATORS

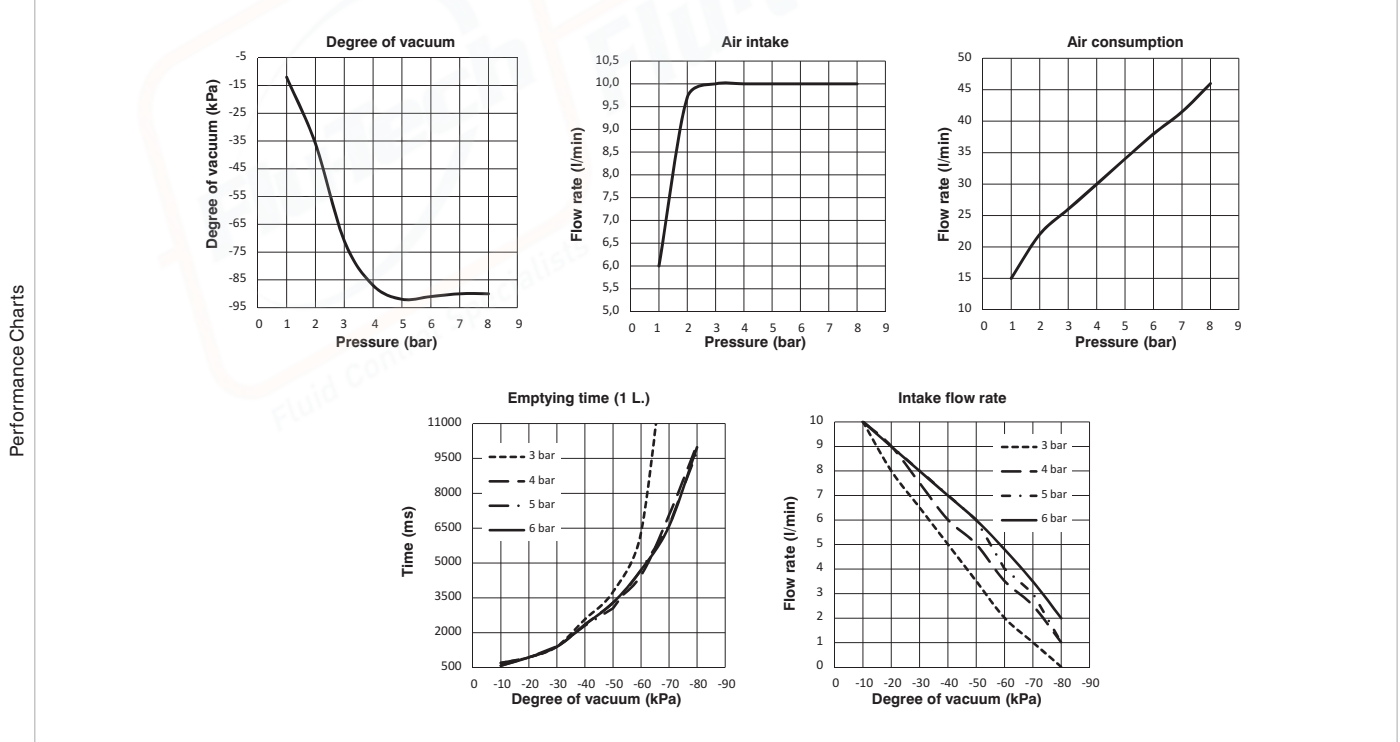
► **Single stage vacuum generator T18**

Ordering code
<b>19T18.S.07.HV.VV</b>



Single stage generators, robust and reliable, with compact dimensions and suitable for applications which need the required degree of vacuum to be reached quickly with limited air flows. Operating on the Venturi principle they have the vacuum connection orthogonal to the axis of supply and outlet. They can be connected directly to the suction cups and/or suction cup holder and applied in any position.

Operational characteristics	2	4	6
- Inlet pressure (bar)	2	4	6
- Degree of Vacuum (-kPa)	36	87	91
- Intake flow rate (l/min)	10	10	10
- Air consumption (l/min)	22	30	38



Technical characteristics	
Fluid	Unlubricated filtered air
Pressure (bar)	1 ... 8
Temperature (°C)	-10 ... +80
Weight (gr.)	36
Noise (dBA)	77

Accessories	
19S18.S	Silencer G1/8"

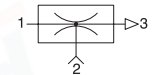
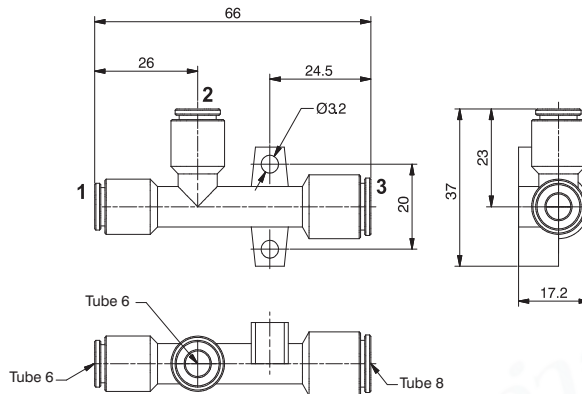
VACUUM GENERATORS



Single stage vacuum generator T06

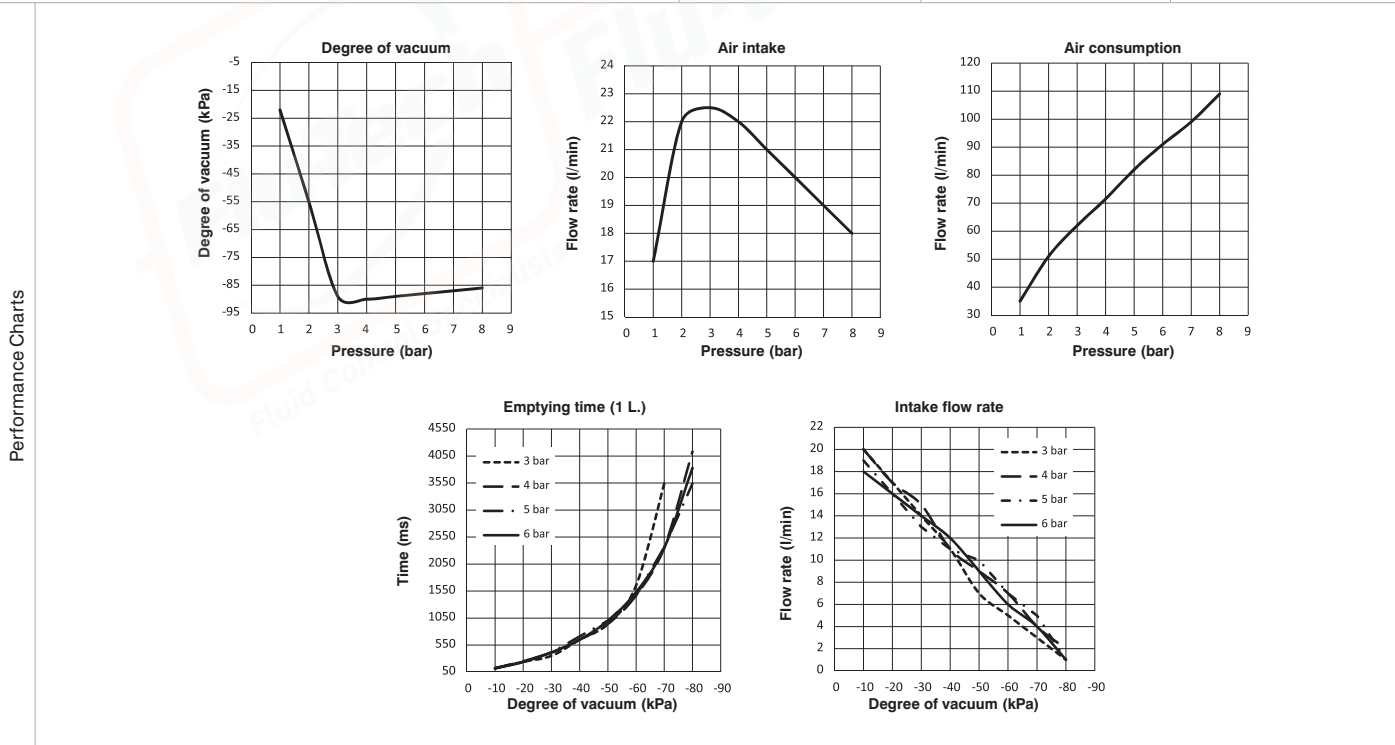
Ordering code

19T06.S.10.HV.ZY



Single stage generators, robust and reliable, with compact dimensions and suitable for applications which need the required degree of vacuum to be reached quickly with limited air flows. Operating on the Venturi principle they have the vacuum connection orthogonal to the axis of supply and outlet. They can be connected directly to the suction cups and/or suction cup holder and applied in any position.

Operational characteristics	2	4	6
- Inlet pressure (bar)	2	4	6
- Degree of Vacuum (-kPa)	55	90	88
- Intake flow rate (l/min)	22	22	20
- Air consumption (l/min)	51	72	91

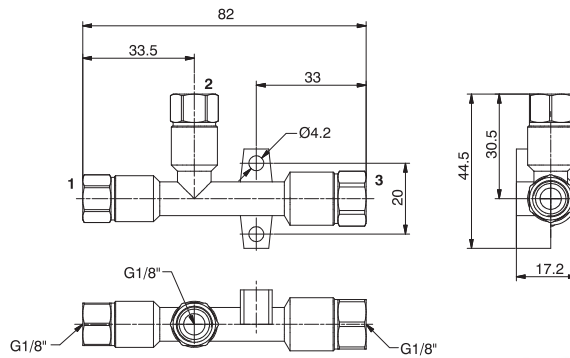


Technical characteristics	
Fluid	Unlubricated filtered air
Pressure (bar)	1 ... 8
Temperature (°C)	-10 ... +80
Weight (gr.)	15
Noise (dBA)	94

VACUUM GENERATORS

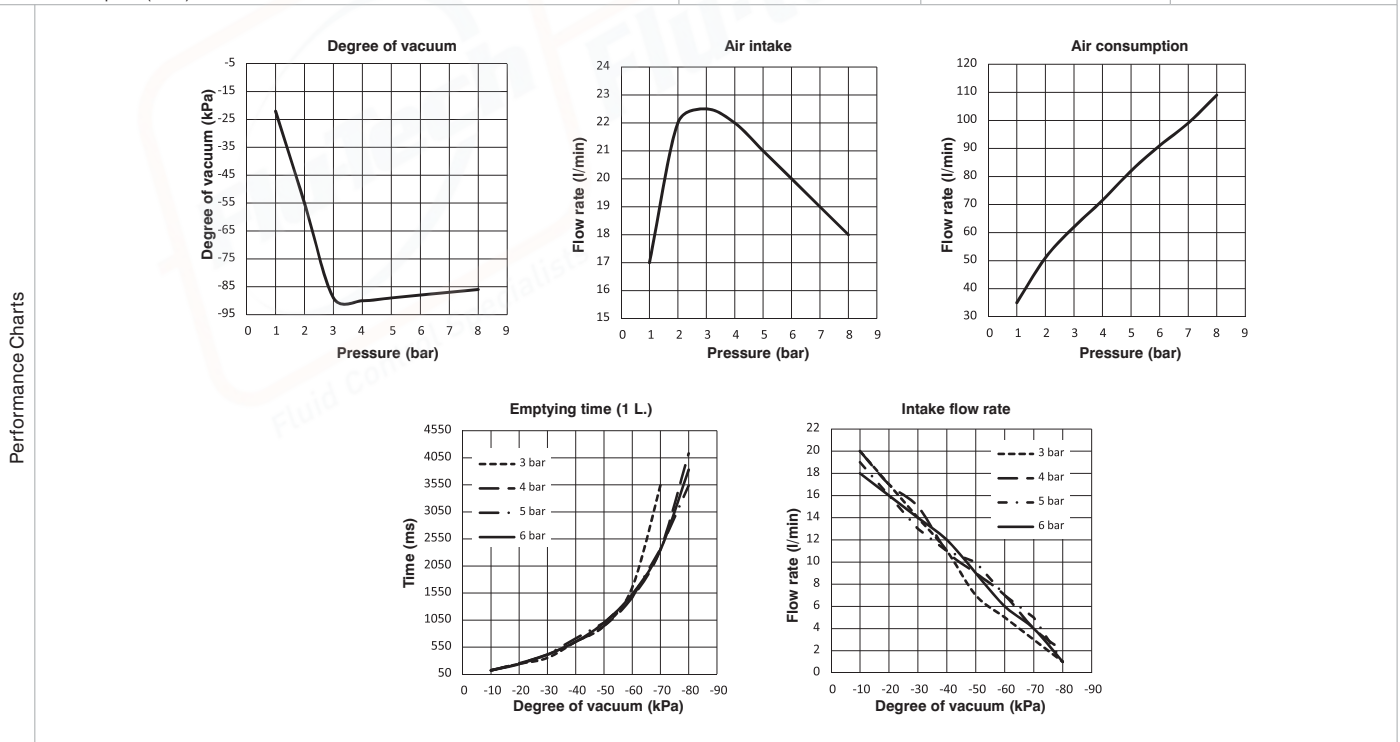
► **Single stage vacuum generator T18**

Ordering code
<b>19T18.S.10.HV.VV</b>



Single stage generators, robust and reliable, with compact dimensions and suitable for applications which need the required degree of vacuum to be reached quickly with limited air flows. Operating on the Venturi principle they have the vacuum connection orthogonal to the axis of supply and outlet. They can be connected directly to the suction cups and/or suction cup holder and applied in any position.

Operational characteristics			
- Inlet pressure (bar)	2	4	6
- Degree of Vacuum (-kPa)	55	90	88
- Intake flow rate (l/min)	22	22	20
- Air consumption (l/min)	51	72	91



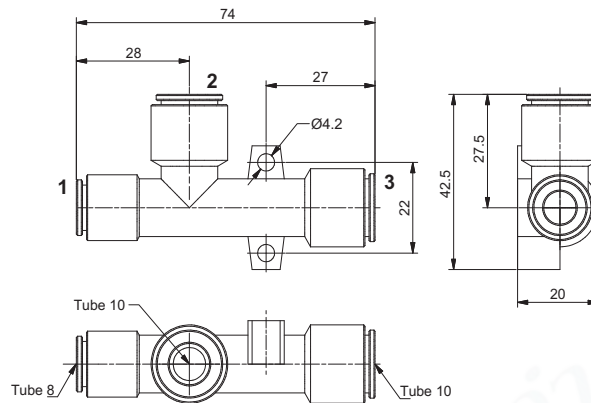
Technical characteristics	
Fluid	Unlubricated filtered air
Pressure (bar)	1 ... 8
Temperature (°C)	-10 ... +80
Weight (gr.)	46
Noise (dBA)	87

Accessories	
19S18.S	Silencer G1/8"

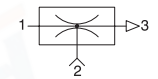
VACUUM GENERATORS



Single stage vacuum generator T10

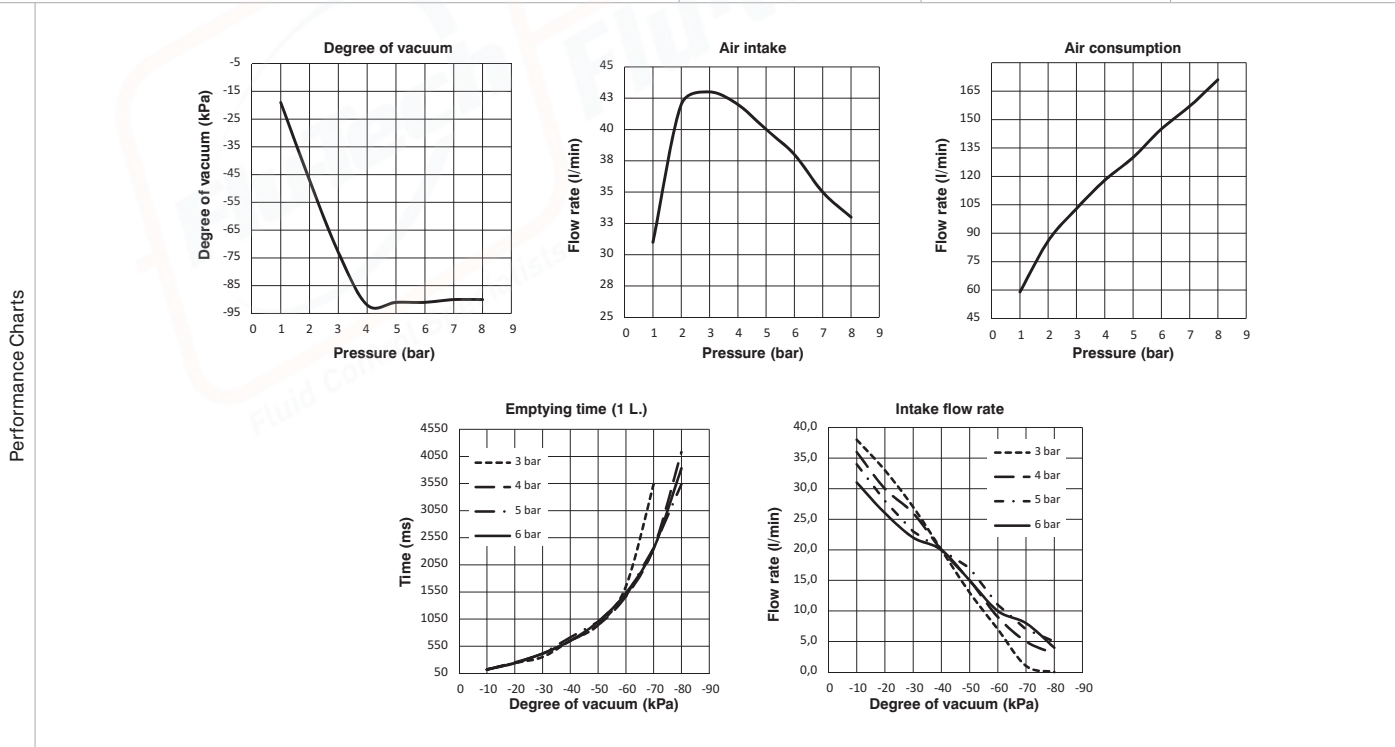


Ordering code  
**19T10.S.13.HV.XX**



Single stage generators, robust and reliable, with compact dimensions and suitable for applications which need the required degree of vacuum to be reached quickly with limited air flows. Operating on the Venturi principle they have the vacuum connection orthogonal to the axis of supply and outlet. They can be connected directly to the suction cups and/or suction cup holder and applied in any position.

Operational characteristics	2	4	6
- Inlet pressure (bar)	2	4	6
- Degree of Vacuum (-kPa)	47	92	91
- Intake flow rate (l/min)	42	42	38
- Air consumption (l/min)	86	118	145

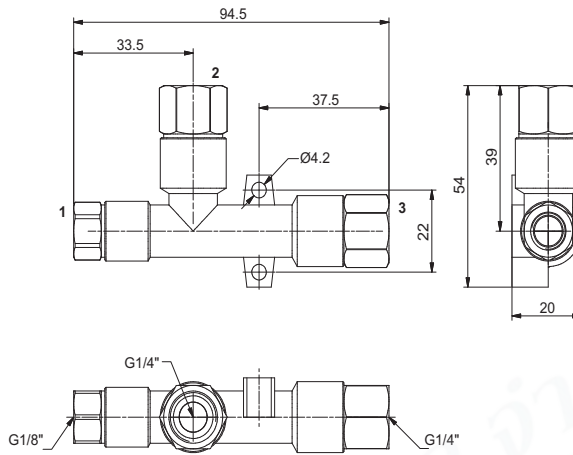


Technical characteristics	
Fluid	Unlubricated filtered air
Pressure (bar)	1 ... 8
Temperature (°C)	-10 ... +80
Weight (gr.)	25
Noise (dBA)	92

VACUUM GENERATORS



► **Single stage vacuum generator T14**

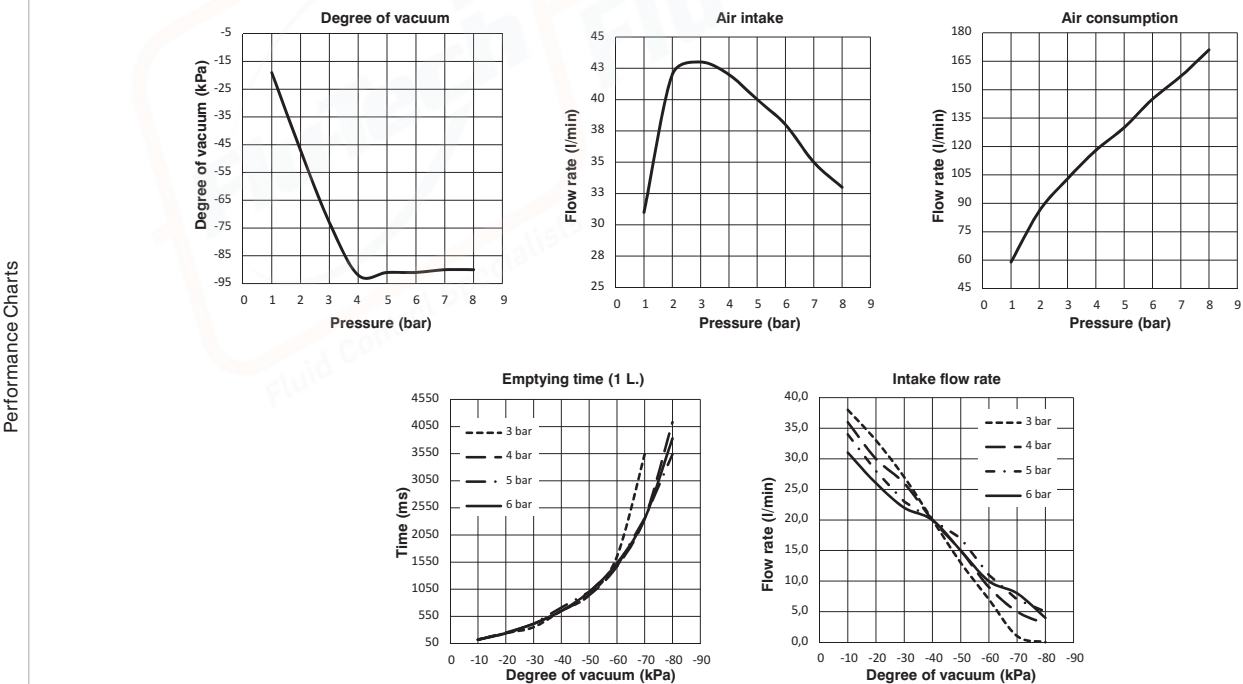


Ordering code
<b>19T14.S.15.HV.UU</b>

Single stage generators, robust and reliable, with compact dimensions and suitable for applications which need the required degree of vacuum to be reached quickly with limited air flows. Operating on the Venturi principle they have the vacuum connection orthogonal to the axis of supply and outlet. They can be connected directly to the suction cups and/or suction cup holder and applied in any position.

**Operational characteristics**

- Inlet pressure (bar)	2	4	6
- Degree of Vacuum (-kPa)	47	92	91
- Intake flow rate (l/min)	42	42	38
- Air consumption (l/min)	86	118	145



**Technical characteristics**

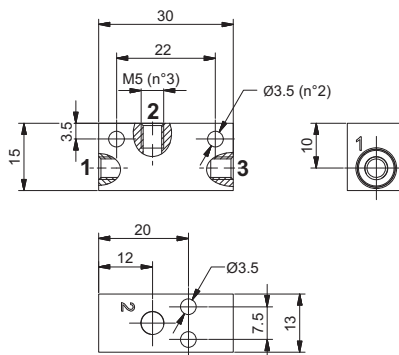
Fluid	Unlubricated filtered air
Pressure (bar)	1 ... 8
Temperature (°C)	-10 ... +80
Weight (gr.)	86
Noise (dBA)	96

**Accessories**

<b>19S14.S</b>	Silencer G 1/4"
----------------	-----------------



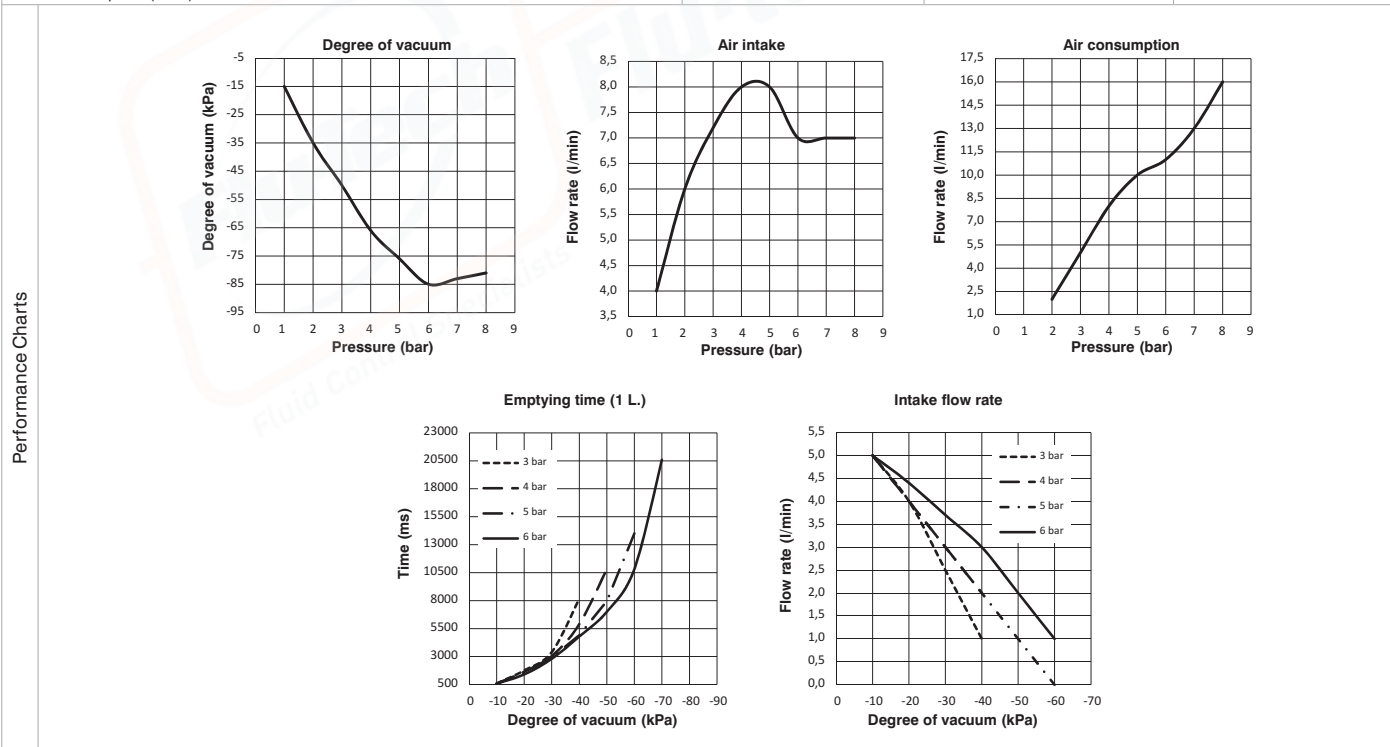
Single stage vacuum generator M5



Ordering code  
**19M05.S.05.SS.00**

Single stage generators, robust and reliable, with compact dimensions and suitable for applications which need the required degree of vacuum to be reached quickly with limited air flows. Operating on the Venturi principle they have the vacuum connection orthogonal to the axis of supply and outlet. They can be connected directly to the suction cups and/or suction cup holder and applied in any position.

Operational characteristics	2	4	6
- Inlet pressure (bar)	2	4	6
- Degree of Vacuum (-kPa)	35	66	85
- Intake flow rate (l/min)	6	8	7
- Air consumption (l/min)	2	8	11

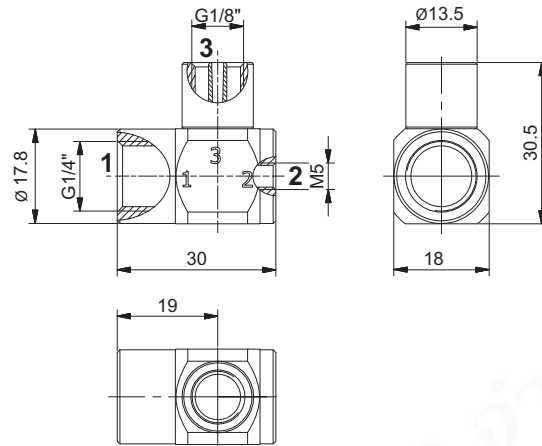


Technical characteristics	
Fluid	Unlubricated filtered air
Pressure (bar)	1 ... 8
Temperature (°C)	-10 ... +80
Weight (gr.)	15

VACUUM GENERATORS



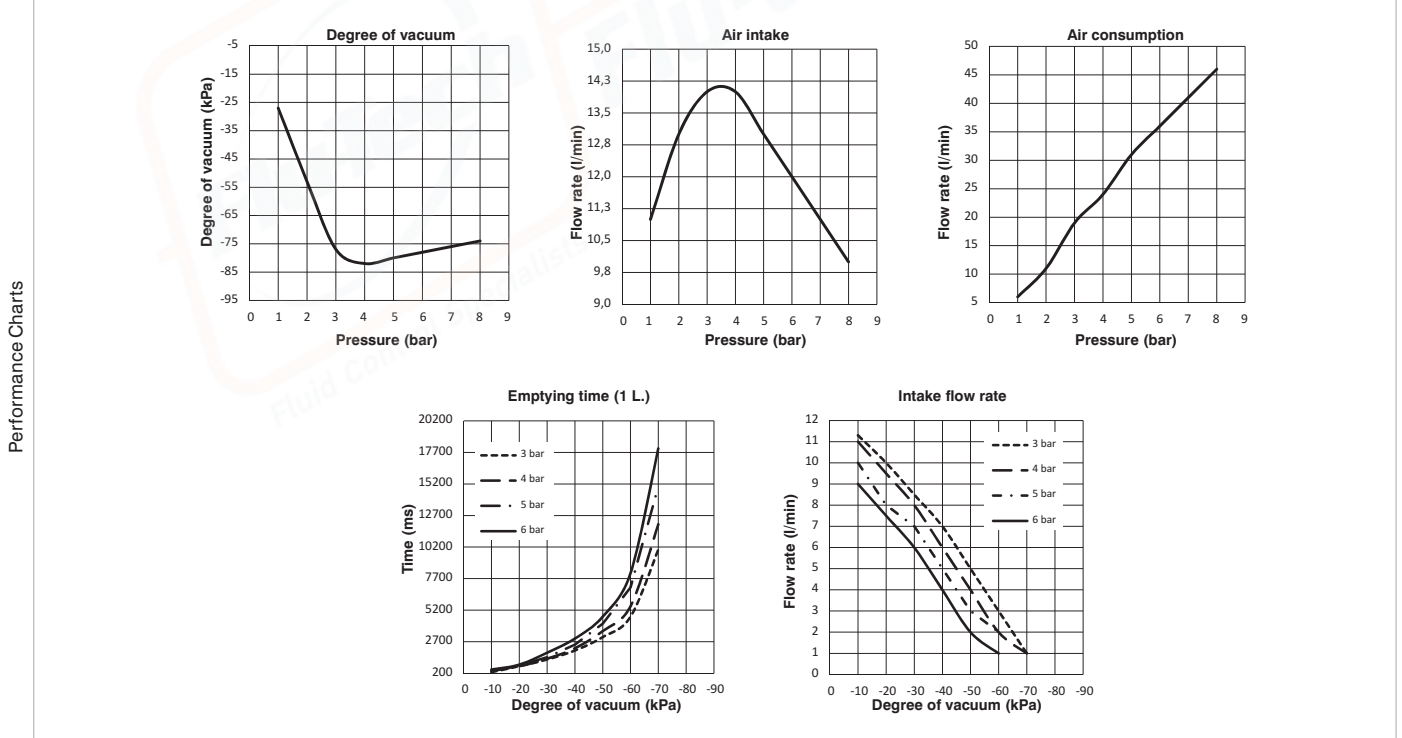
Single stage vacuum generator M5



Ordering code
<b>19M05.S.08.SS.L0</b>

Single stage generators, with operation based on the Venturi principle; their main feature is the presence of feed pressure and connection for the vacuum on the same axis. This makes it possible to connect the suction cups directly to the generator or through the suction cup holder, so therefore still on the same axis with obvious advantages in terms of system layout and simplicity. The outlet connection has a female thread G 1/8".

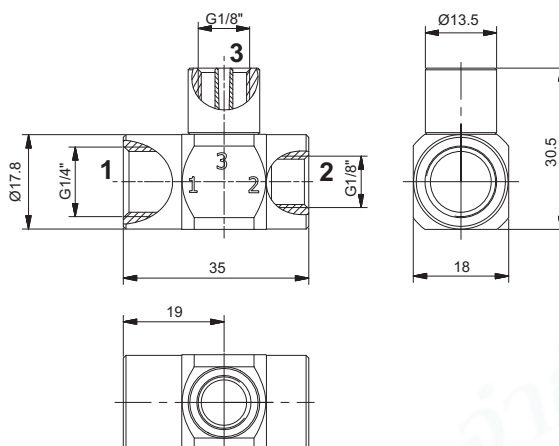
Operational characteristics			
- Inlet pressure (bar)	2	4	6
- Degree of Vacuum (-kPa)	53	82	78
- Intake flow rate (l/min)	13	14	12
- Air consumption (l/min)	11	24	36



Technical characteristics	
Fluid	Unlubricated filtered air
Pressure (bar)	1 ... 8
Temperature (°C)	-10 ... +80
Weight (gr.)	24

Accessories	
19S18.S	Silencer G1/8"

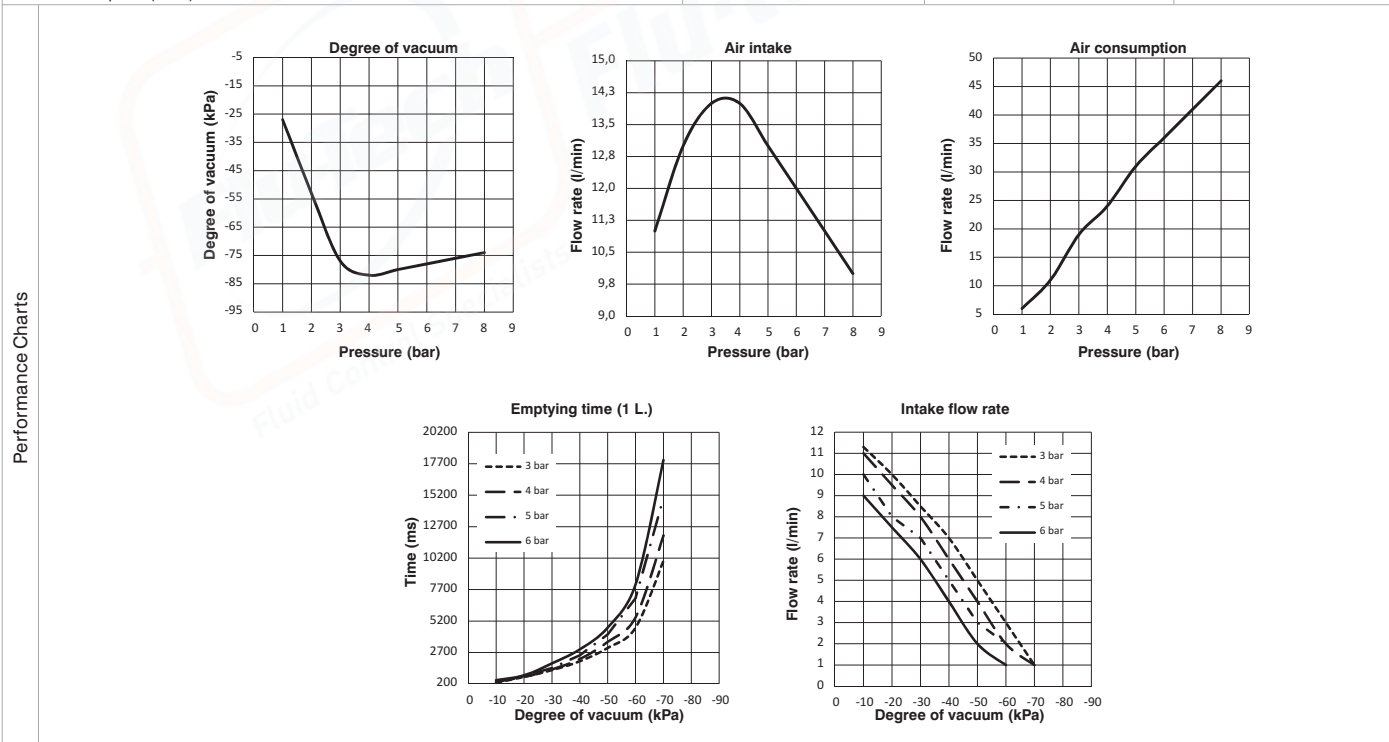
Single stage vacuum generator G1/8"



Ordering code  
**19M18.S.08.SS.L0**

Single stage generators, with operation based on the Venturi principle; their main feature is the presence of feed pressure and connection for the vacuum on the same axis. This makes it possible to connect the suction cups directly to the generator or through the suction cup holder, so therefore still on the same axis with obvious advantages in terms of system layout and simplicity. The outlet connection has a female thread G 1/8".

Operational characteristics	2	4	6
- Inlet pressure (bar)	2	4	6
- Degree of Vacuum (-kPa)	53	82	78
- Intake flow rate (l/min)	13	14	12
- Air consumption (l/min)	11	24	36

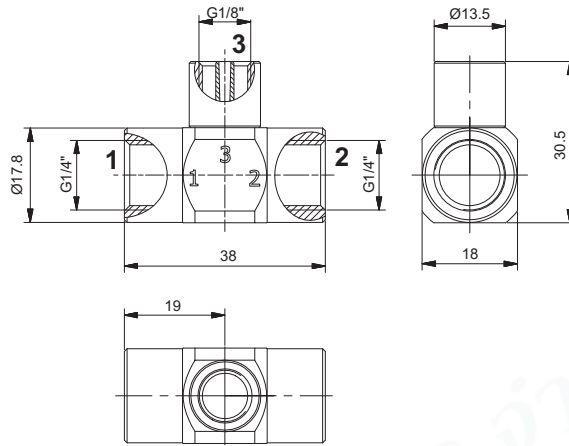


Technical characteristics	
Fluid	Unlubricated filtered air
Pressure (bar)	1 ... 8
Temperature (°C)	-10 ... +80
Weight (gr.)	26

Accessories	
19S18.S	Silencer G1/8"

VACUUM GENERATORS

► **Single stage vacuum generator G1/4"**

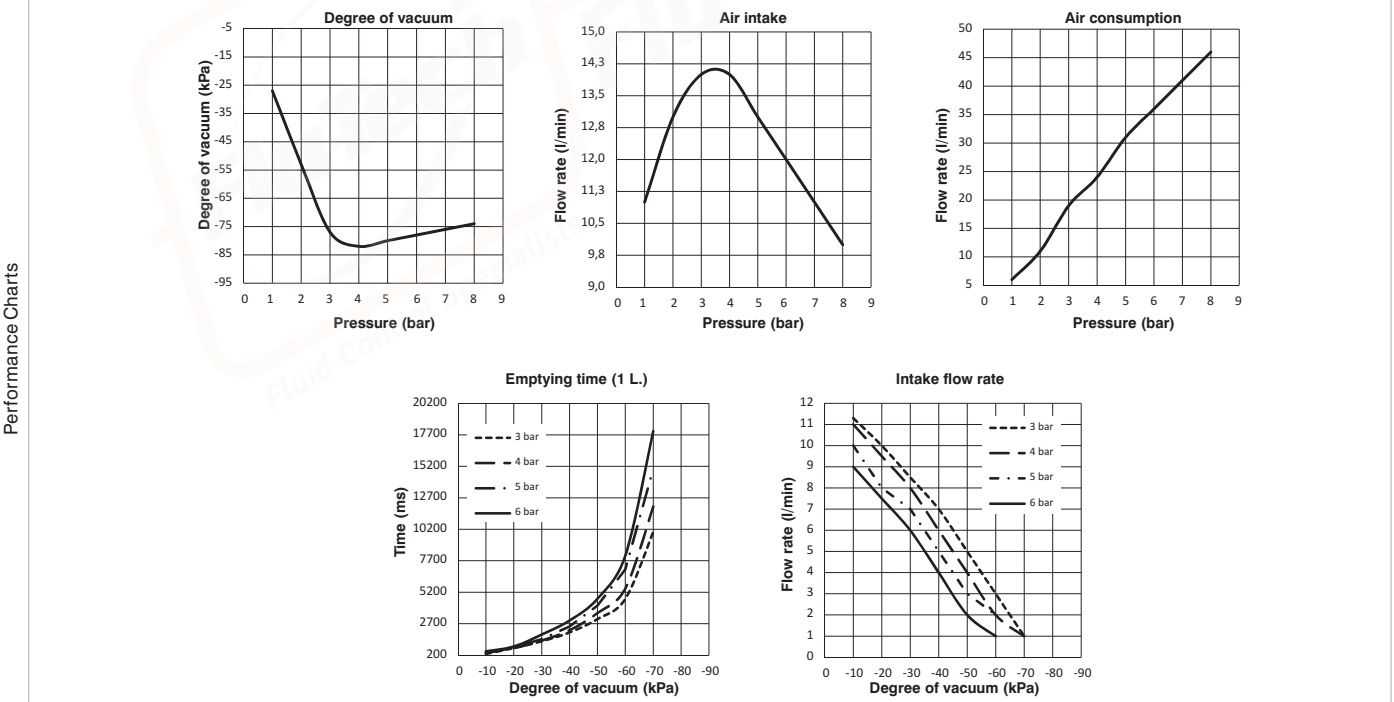


Ordering code
<b>19M14.S.08.SS.L0</b>

Single stage generators, with operation based on the Venturi principle; their main feature is the presence of feed pressure and connection for the vacuum on the same axis. This makes it possible to connect the suction cups directly to the generator or through the suction cup holder, so therefore still on the same axis with obvious advantages in terms of system layout and simplicity. The outlet connection has a female thread G 1/8".

**Operational characteristics**

- Inlet pressure (bar)	2	4	6
- Degree of Vacuum (-kPa)	53	82	78
- Intake flow rate (l/min)	13	14	12
- Air consumption (l/min)	11	24	36



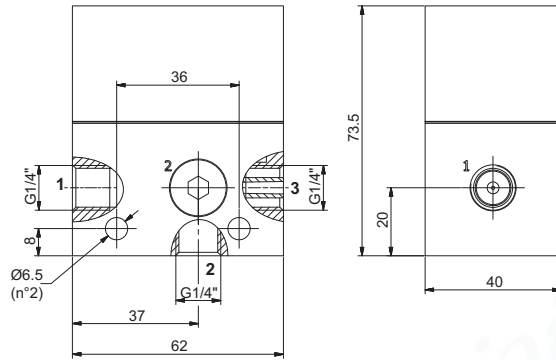
**Technical characteristics**

Fluid	Unlubricated filtered air
Pressure (bar)	1 ... 8
Temperature (°C)	-10 ... +80
Weight (gr.)	26

**Accessories**

19S18.S	Silencer G1/8"
---------	----------------

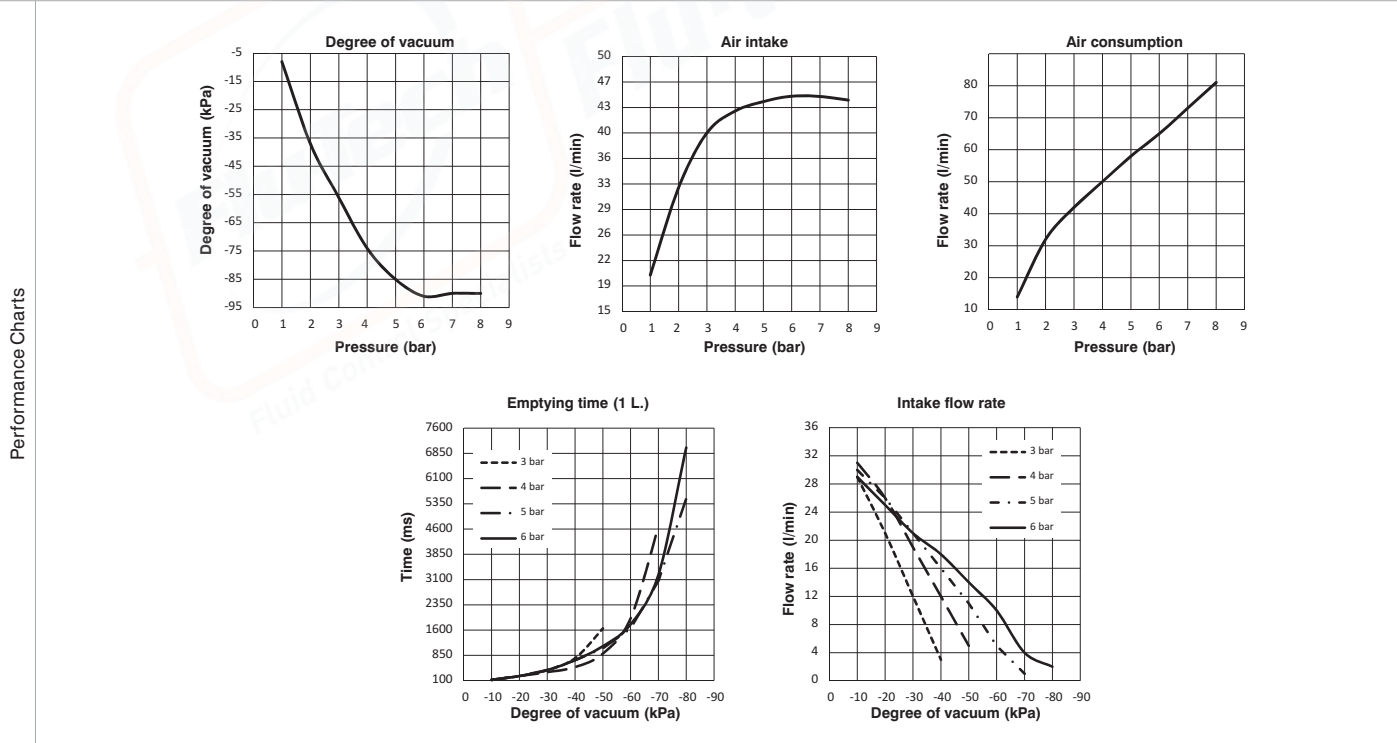
Single stage vacuum generator G1/4"



Ordering code  
**19M14.S.10.SS.E0**

Single stage generators derived from standard traditional single-stage generators, complete with automatic release system. The pressure supply, in addition to generating the defined vacuum through the Venturi principle, supplies a chamber which serves as a pressure accumulator. When the supply stops, through a non-return valve, the accumulated pressure will be discharged automatically through the vacuum connection, ensuring quick detachment of the gripped piece.

Operational characteristics	2	4	6
- Inlet pressure (bar)	2	4	6
- Degree of Vacuum (-kPa)	37	74	91
- Intake flow rate (l/min)	32	43	45
- Air consumption (l/min)	32	50	75

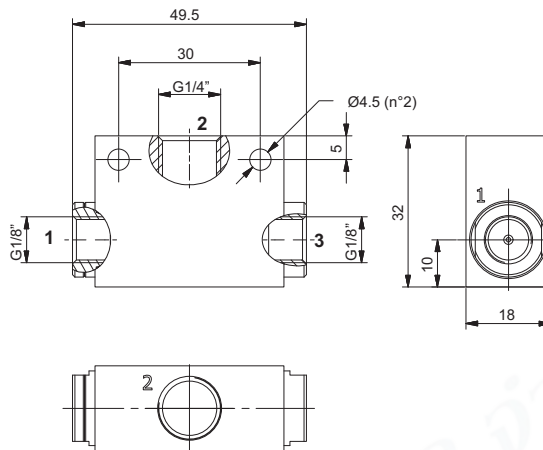


Technical characteristics	
Fluid	Unlubricated filtered air
Pressure (bar)	1 ... 8
Temperature (°C)	-10 ... +80
Weight (gr.)	346

Accessories	
19S14.S	Silencer G1/4"

VACUUM GENERATORS

Single stage vacuum generator G1/4"

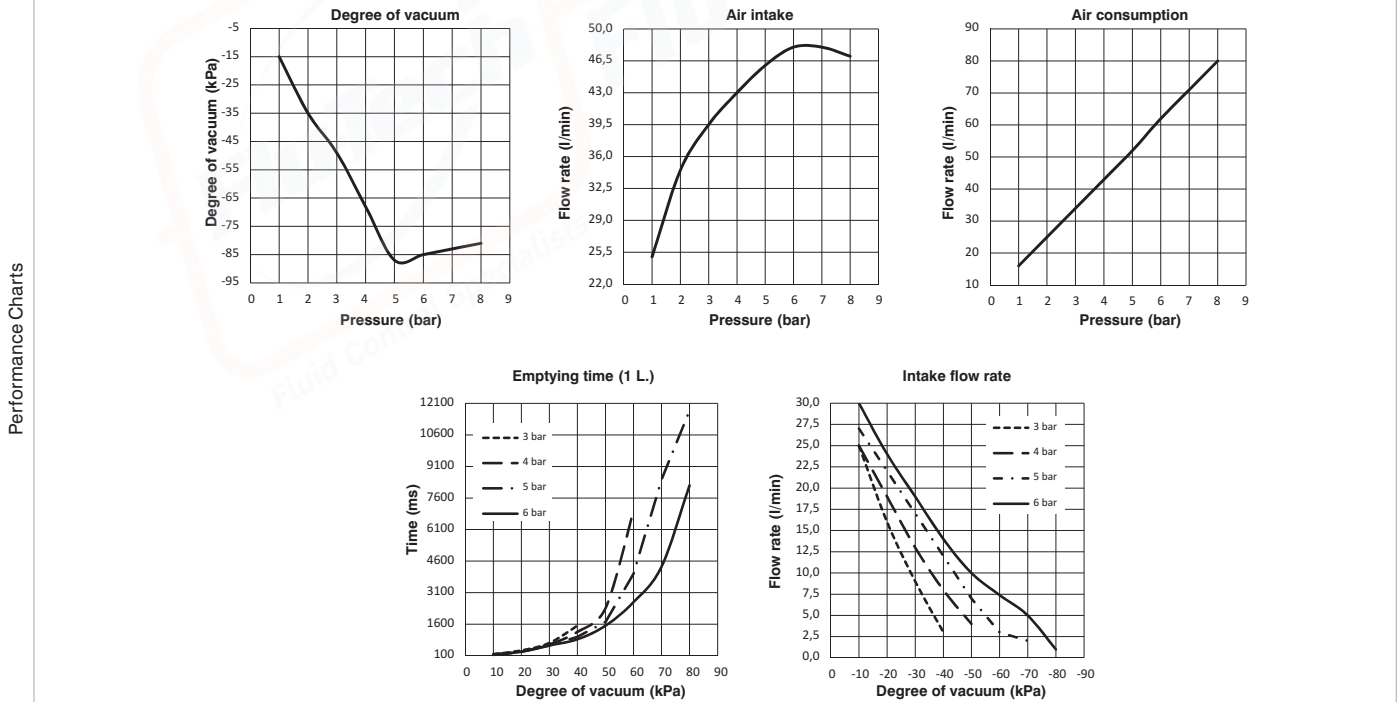


Ordering code
<b>19M14.S.10.SS.R0</b>

Single stage generators, robust and reliable, with compact dimensions and suitable for applications which need the required degree of vacuum to be reached quickly with limited air flows. Operating on the Venturi principle they have the vacuum connection orthogonal to the axis of supply and outlet. They can be connected directly to the suction cups and/or suction cup holder and applied in any position.

**Operational characteristics**

- Inlet pressure (bar)	2	4	6
- Degree of Vacuum (-kPa)	35	68	85
- Intake flow rate (l/min)	35	43	48
- Air consumption (l/min)	25	43	62



**Technical characteristics**

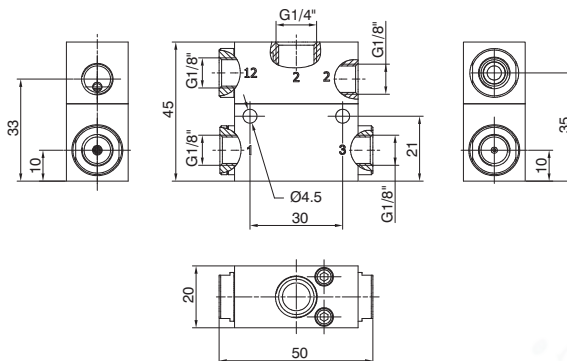
Fluid	Unlubricated filtered air
Pressure (bar)	1 ... 8
Temperature (°C)	-10 ... +80
Weight (gr.)	55

**Accessories**

19S18.S	Silencer G1/8"
---------	----------------

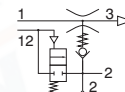


Single stage vacuum generator with built in vacuum retaining valve



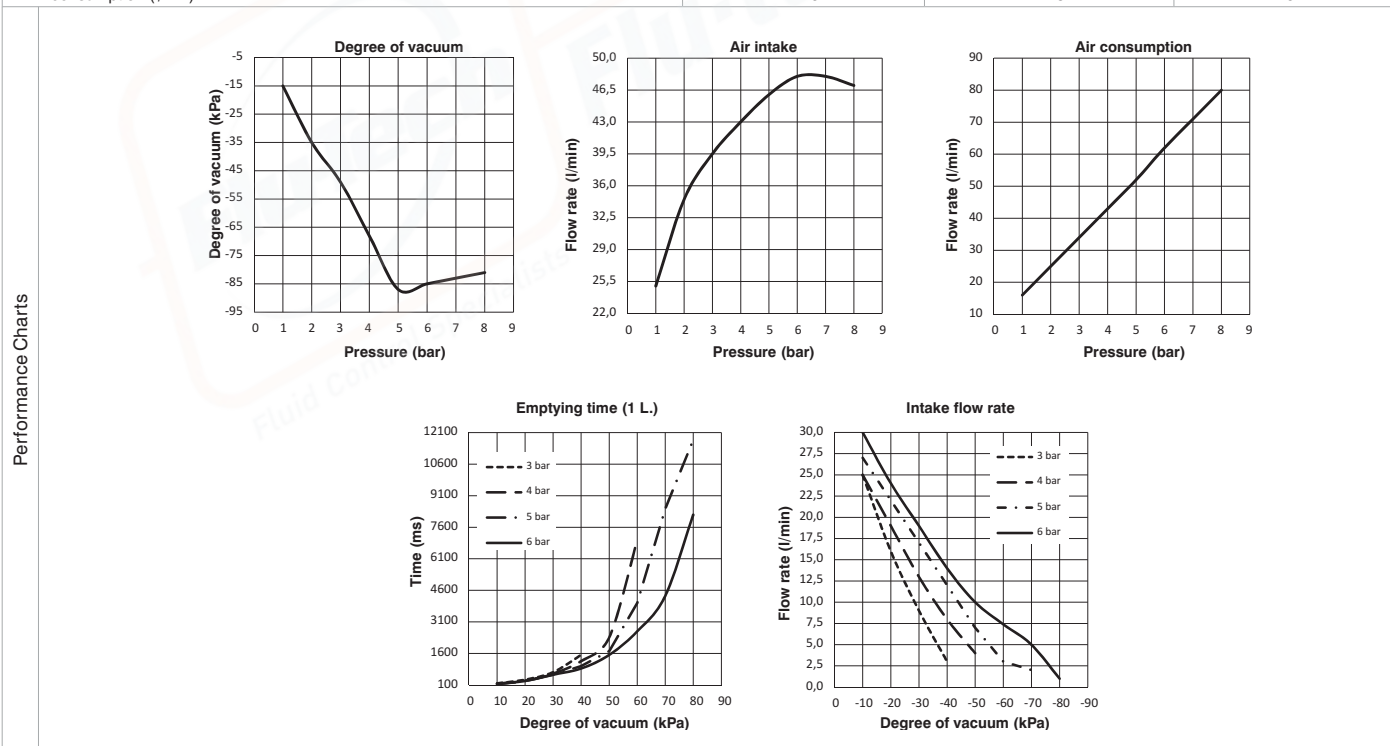
Ordering code

19M14.S.10.SS.03



Single stage generators, robust and reliable, with compact dimensions and suitable for applications which require the vacuum to be reached quickly with limited air flow. Operating on the Venturi principle they have the vacuum connection orthogonal to the axis of supply and outlet. They can be connected directly to the suction cups or suction cup holder for the construction of a decentralized plant. Equipped with an integrated non-return valve, which holds the vacuum in sealed applications and breakdowns or lack of air supply and a flap valve for the quick release of the manipulated objects.

Operational characteristics	2	4	6
- Inlet pressure (bar)	2	4	6
- Degree of Vacuum (-kPa)	35	68	85
- Intake flow rate (l/min)	35	43	48
- Air consumption (l/min)	25	43	62



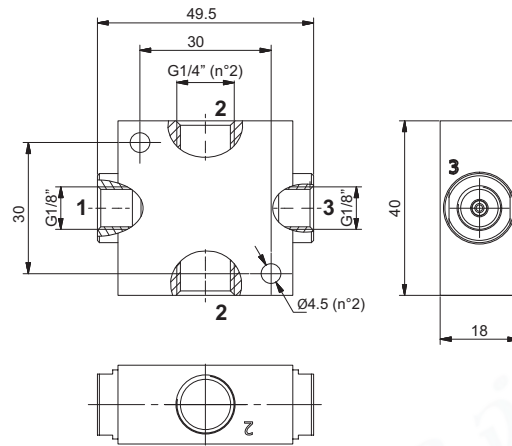
Technical characteristics	
Fluid	Unlubricated filtered air
Pressure (bar)	1 ... 8
Temperature (°C)	-10 ... +80
Weight (gr.)	85

Accessories	
19S18.S	Silencer G1/8"

VACUUM GENERATORS



► **Single stage vacuum generator G1/4"**

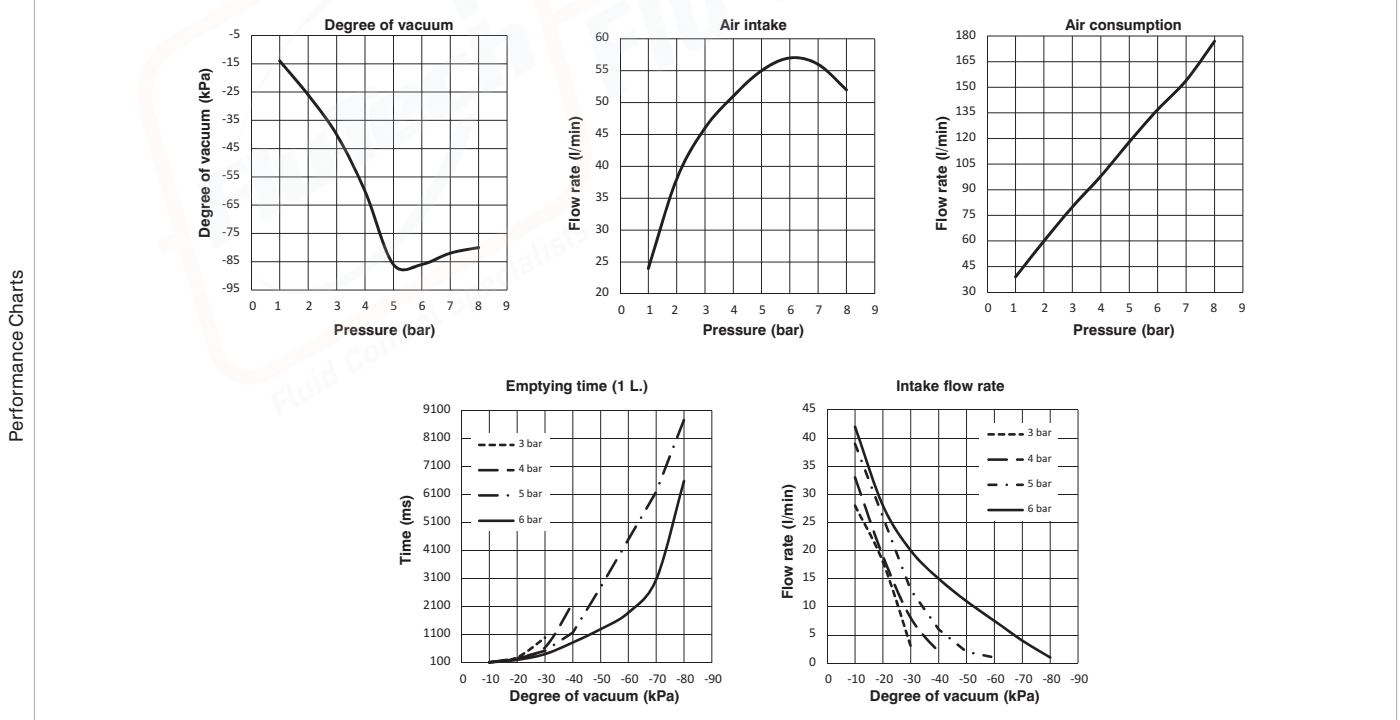


Ordering code
<b>19M14.S.15.SS.RD</b>

Single stage generators, robust and reliable, with compact dimensions and suitable for applications which need the required degree of vacuum to be reached quickly with limited air flows. Operating on the Venturi principle they have the vacuum connection orthogonal to the axis of supply and outlet. They can be connected directly to the suction cups and/or suction cup holder and applied in any position.

**Operational characteristics**

- Inlet pressure (bar)	2	4	6
- Degree of Vacuum (-kPa)	26	60	86
- Intake flow rate (l/min)	38	51	57
- Air consumption (l/min)	60	98	137



**Technical characteristics**

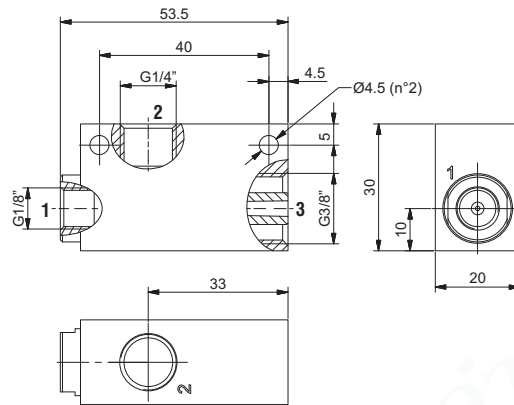
Fluid	Unlubricated filtered air
Pressure (bar)	1 ... 8
Temperature (°C)	-10 ... +80
Weight (gr.)	68

**Accessories**

19S18.S	Silencer G1/8"
---------	----------------



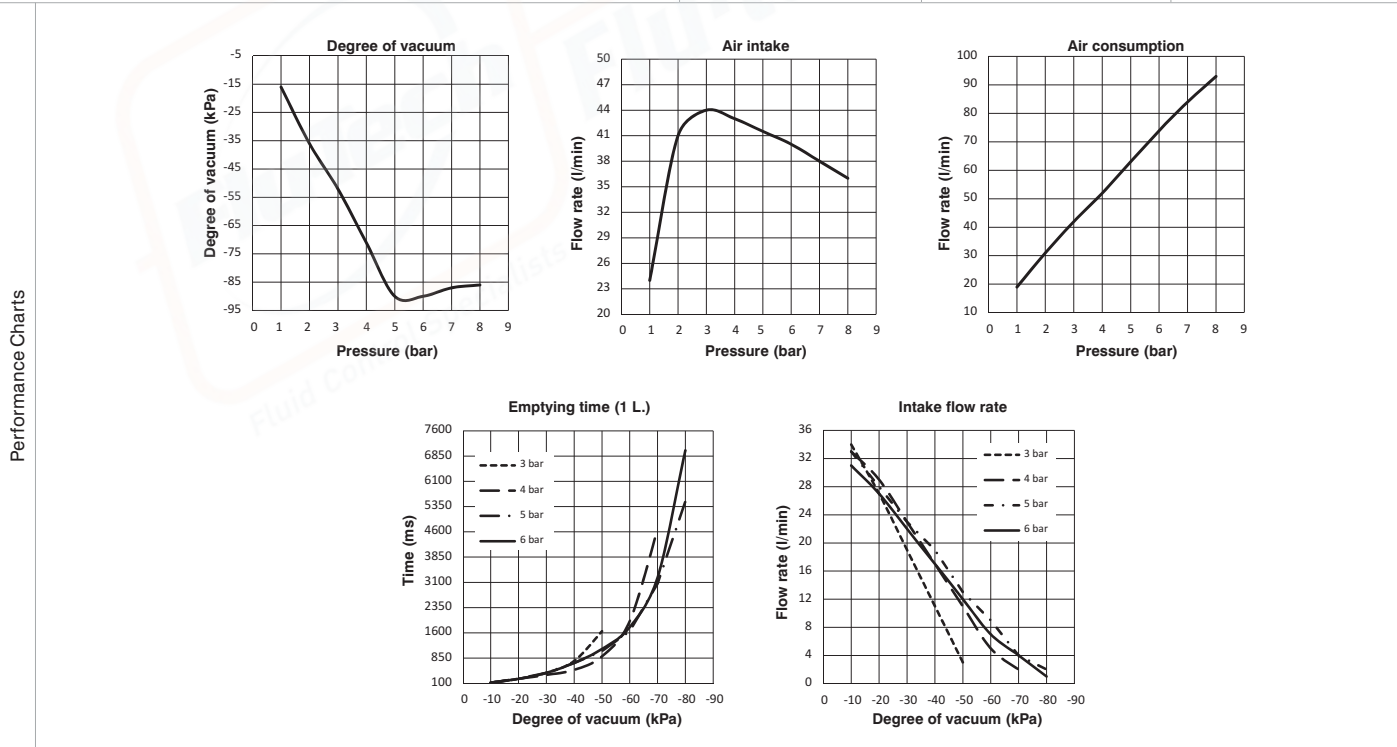
Single stage vacuum generator G1/4"



Ordering code  
**19M14.S.11.SS.00**

Single stage generators, robust and reliable, with compact dimensions and suitable for applications which need the required degree of vacuum to be reached quickly with limited air flows. Operating on the Venturi principle they have the vacuum connection orthogonal to the axis of supply and outlet. They can be connected directly to the suction cups and/or suction cup holder and applied in any position.

Operational characteristics	2	4	6
- Inlet pressure (bar)	2	4	6
- Degree of Vacuum (-kPa)	36	71	90
- Intake flow rate (l/min)	41	43	40
- Air consumption (l/min)	31	52	74

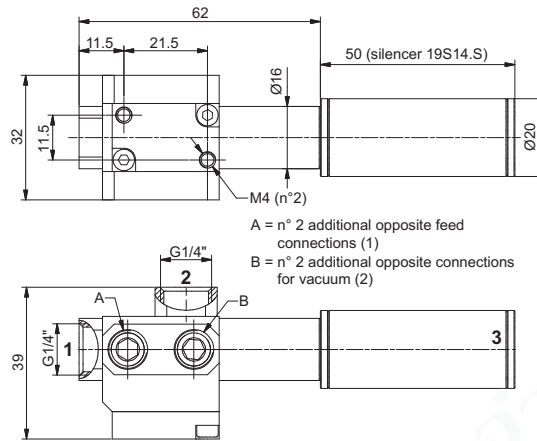


Technical characteristics	
Fluid	Unlubricated filtered air
Pressure (bar)	1 ... 8
Temperature (°C)	-10 ... +80
Weight (gr.)	67

Accessories	
19S38.S	Silencer G3/8"

VACUUM GENERATORS

► **Single stage vacuum generator G1/4"**

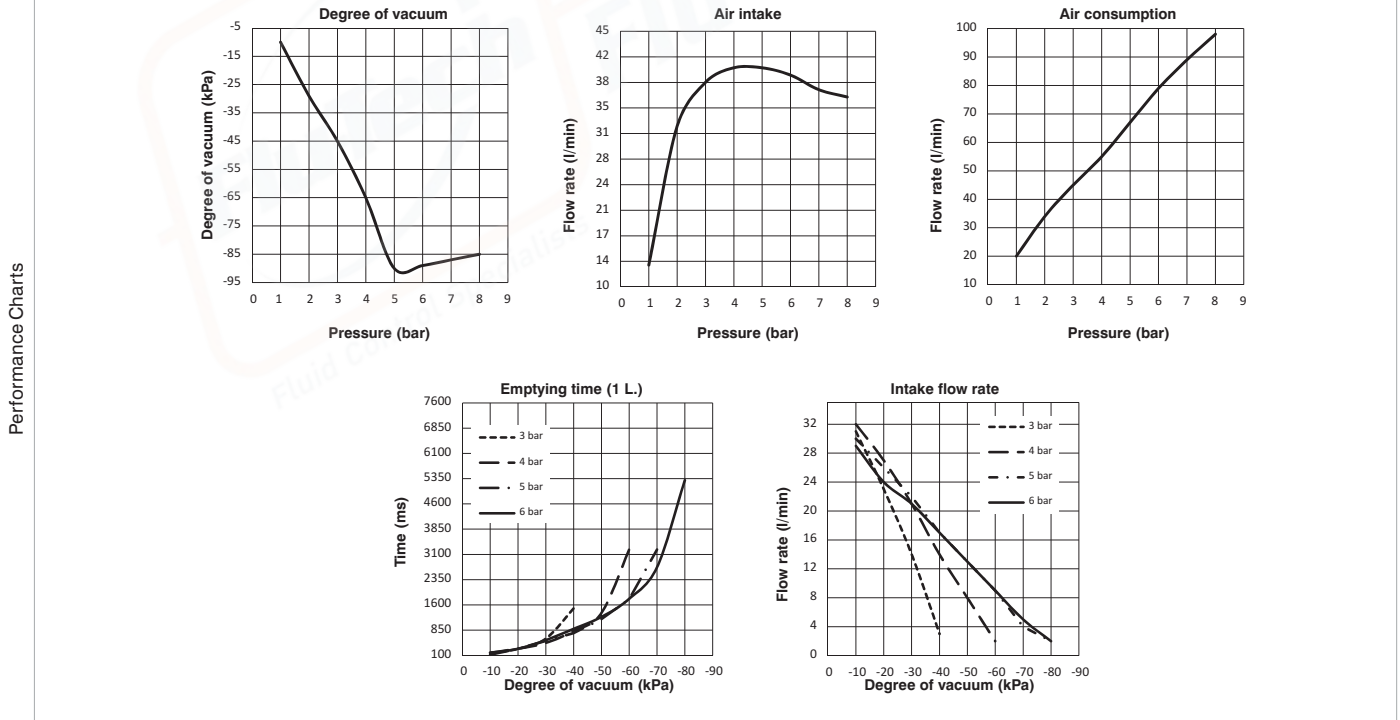


Ordering code  
**19M14.S.12.SL.ES**

High-performance compact generator for high frequency applications; the presence of the integrated ejector ensures release capacity in the shortest possible time. The fact of it being extremely lightweight allows its application directly onto the robot gripping arms and/or mobile applications. Available with two flow rates in the same overall dimensions.

**Operational characteristics**

- Inlet pressure (bar)	2	4	6
- Degree of Vacuum (-kPa)	29	65	89
- Intake flow rate (l/min)	32	40	39
- Air consumption (l/min)	34	55	79

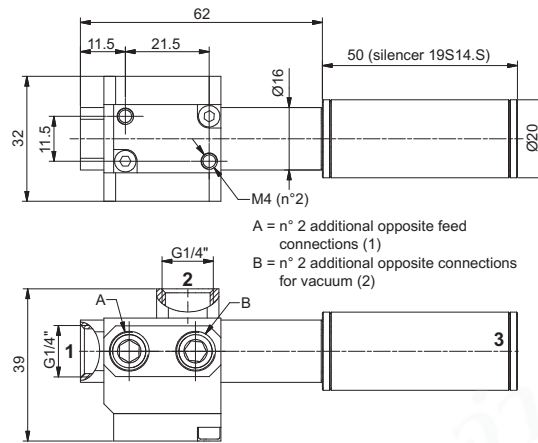


**Technical characteristics**

Fluid	Unlubricated filtered air
Pressure (bar)	1 ... 8
Temperature (°C)	-10 ... +80
Weight (gr.)	83

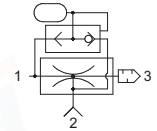
VACUUM GENERATORS

Single stage vacuum generator G1/4"



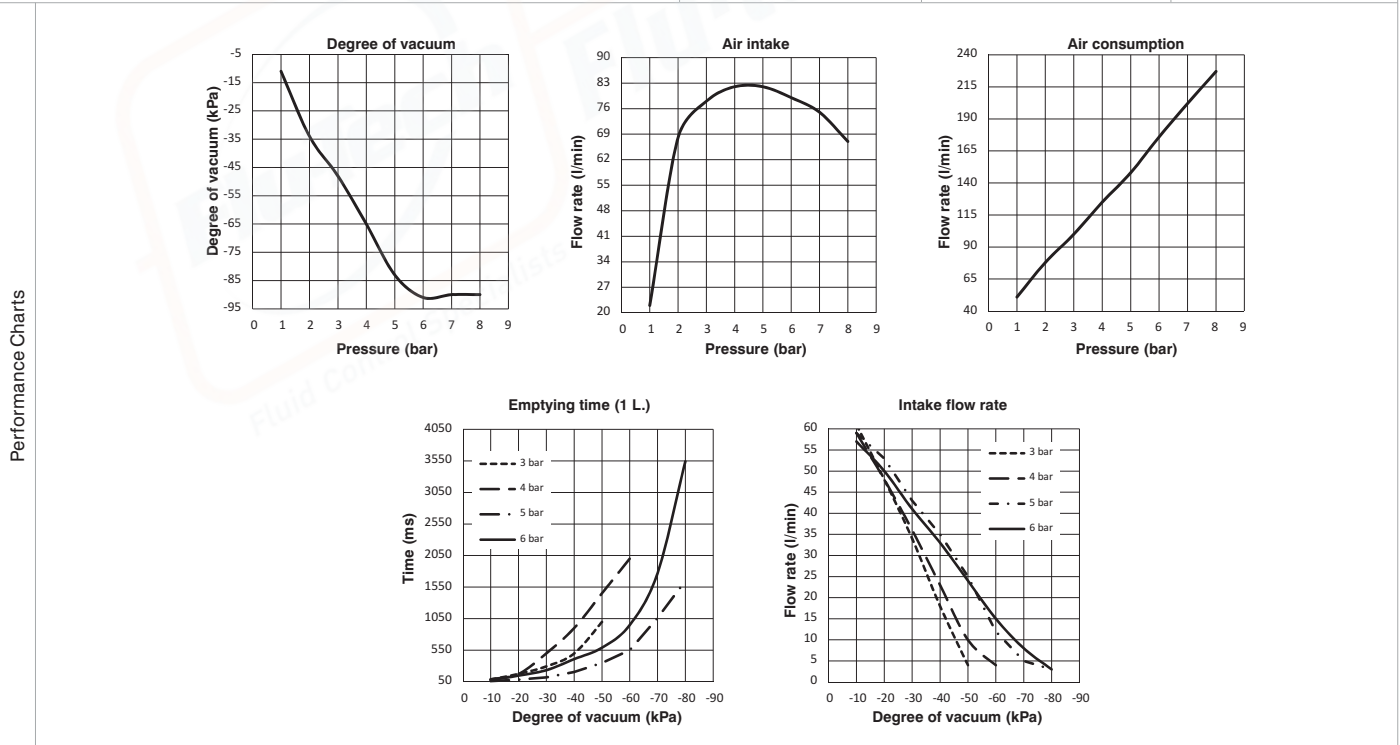
Ordering code

19M14.S.17.SL.ES



High-performance compact generator for high frequency applications; the presence of the integrated ejector ensures release capacity in the shortest possible time. The fact of it being extremely lightweight allows its application directly onto the robot gripping arms and/or mobile applications. Available with two flow rates in the same overall dimensions.

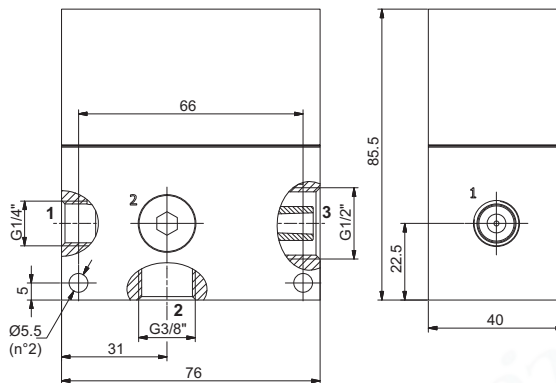
Operational characteristics	2	4	6
- Inlet pressure (bar)	2	4	6
- Degree of Vacuum (-kPa)	34	65	91
- Intake flow rate (l/min)	68	82	79
- Air consumption (l/min)	78	125	176



Technical characteristics	
Fluid	Unlubricated filtered air
Pressure (bar)	1 ... 8
Temperature (°C)	-10 ... +80
Weight (gr.)	83



Single stage vacuum generator G3/8"

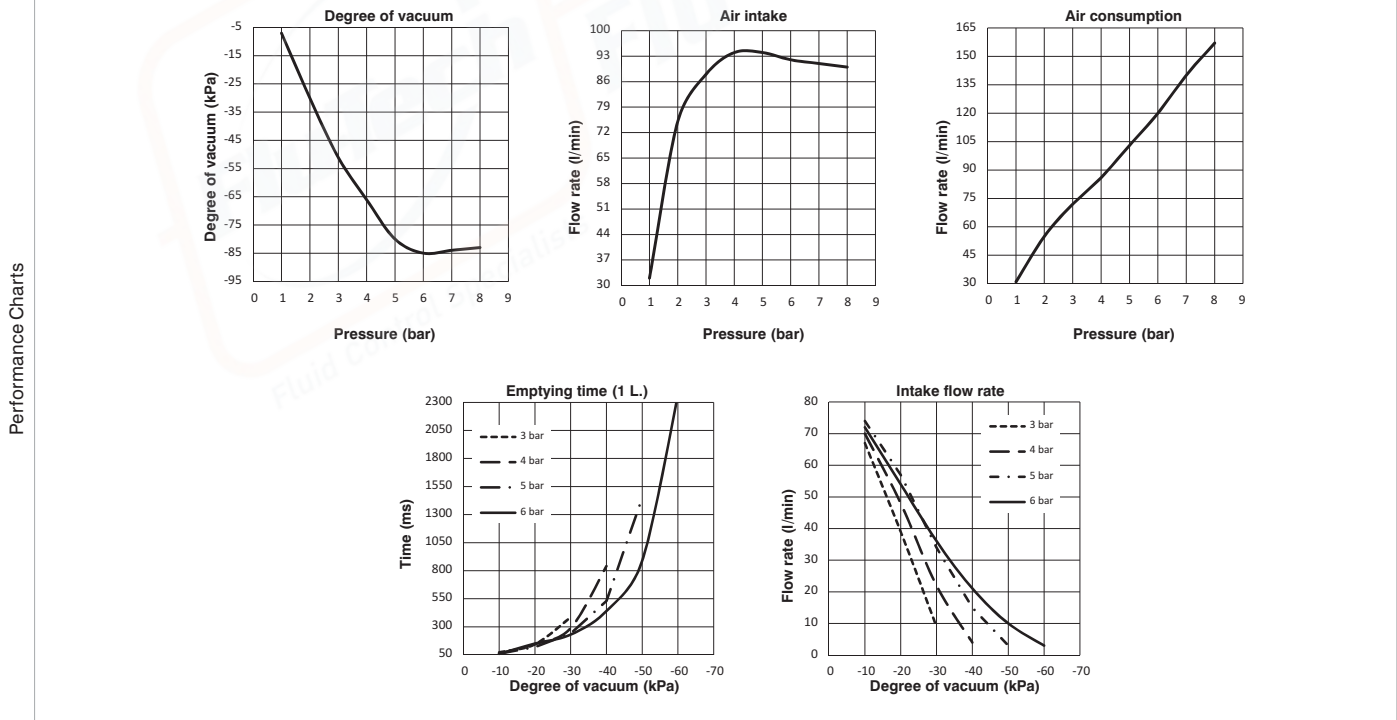


Ordering code  
**19M38.S.14.SS.E0**

Single stage generators derived from standard traditional single-stage generators, complete with automatic release system. The pressure supply, in addition to generating the defined vacuum through the Venturi principle, supplies a chamber which serves as a pressure accumulator. When the supply stops, through a non-return valve, the accumulated pressure will be discharged automatically through the vacuum connection, ensuring quick detachment of the gripped piece.

Operational characteristics

- Inlet pressure (bar)	2	4	6
- Degree of Vacuum (-kPa)	30	66	85
- Intake flow rate (l/min)	75	94	92
- Air consumption (l/min)	55	86	120



Technical characteristics

Fluid	Unlubricated filtered air
Pressure (bar)	1 ... 8
Temperature (°C)	-10 ... +80
Weight (gr.)	480

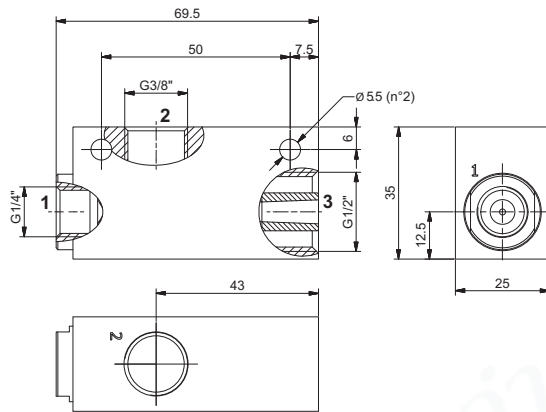
Accessories

19S12.R	Silencer G1/2"
---------	----------------

VACUUM GENERATORS

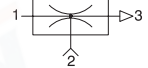


Single stage vacuum generator G3/8"



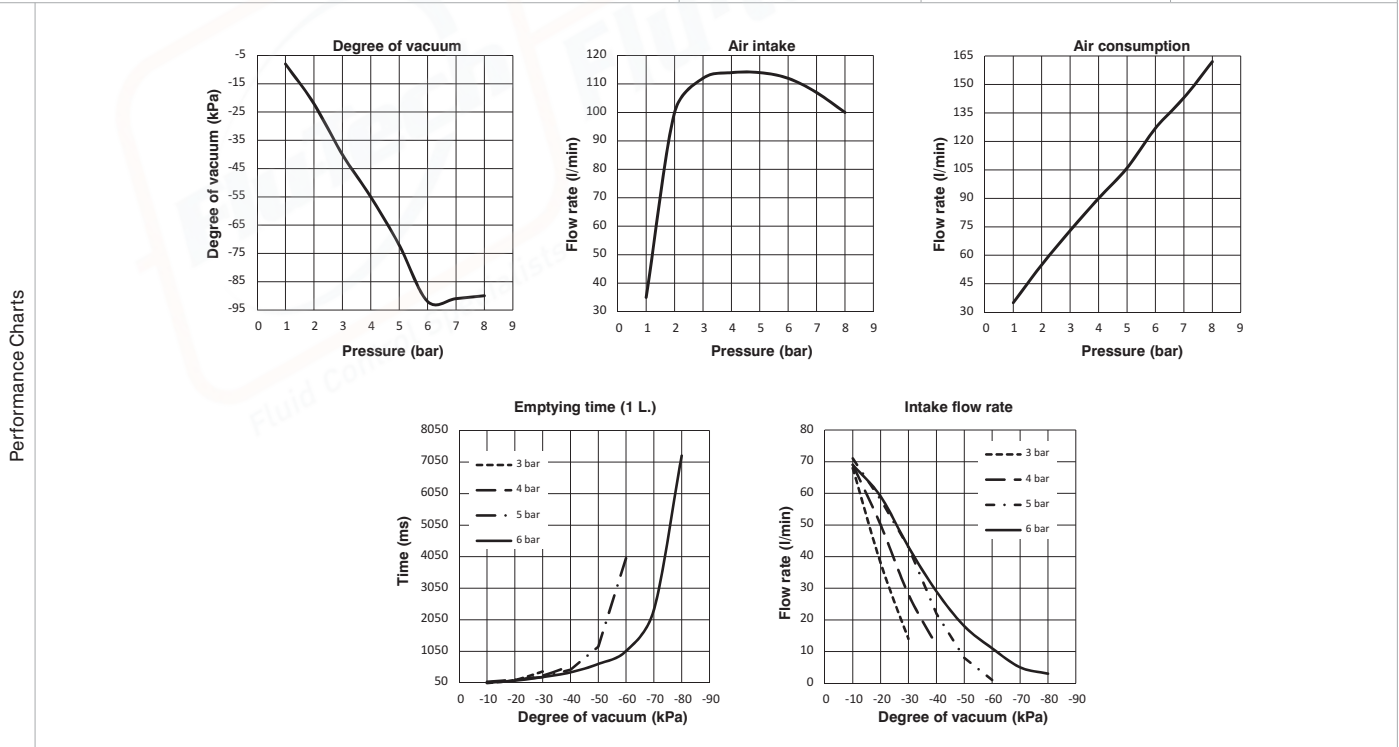
Ordering code

19M38.S.15.SS.00



Single stage generators, robust and reliable, with compact dimensions and suitable for applications which need the required degree of vacuum to be reached quickly with limited air flows. Operating on the Venturi principle they have the vacuum connection orthogonal to the axis of supply and outlet. They can be connected directly to the suction cups and/or suction cup holder and applied in any position.

Operational characteristics	2	4	6
- Inlet pressure (bar)	2	4	6
- Degree of Vacuum (-kPa)	22	55	92
- Intake flow rate (l/min)	100	114	112
- Air consumption (l/min)	55	90	127

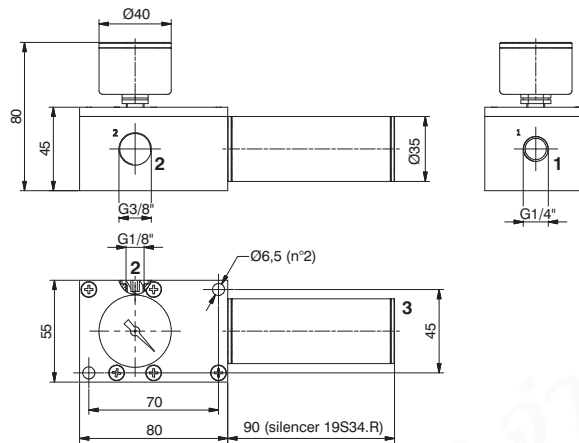


Technical characteristics	
Fluid	Unlubricated filtered air
Pressure (bar)	1 ... 8
Temperature (°C)	-10 ... +80
Weight (gr.)	122

Accessories	
19S12.R	Silencer G1/2"

VACUUM GENERATORS

► **Single stage vacuum generator G3/8"**

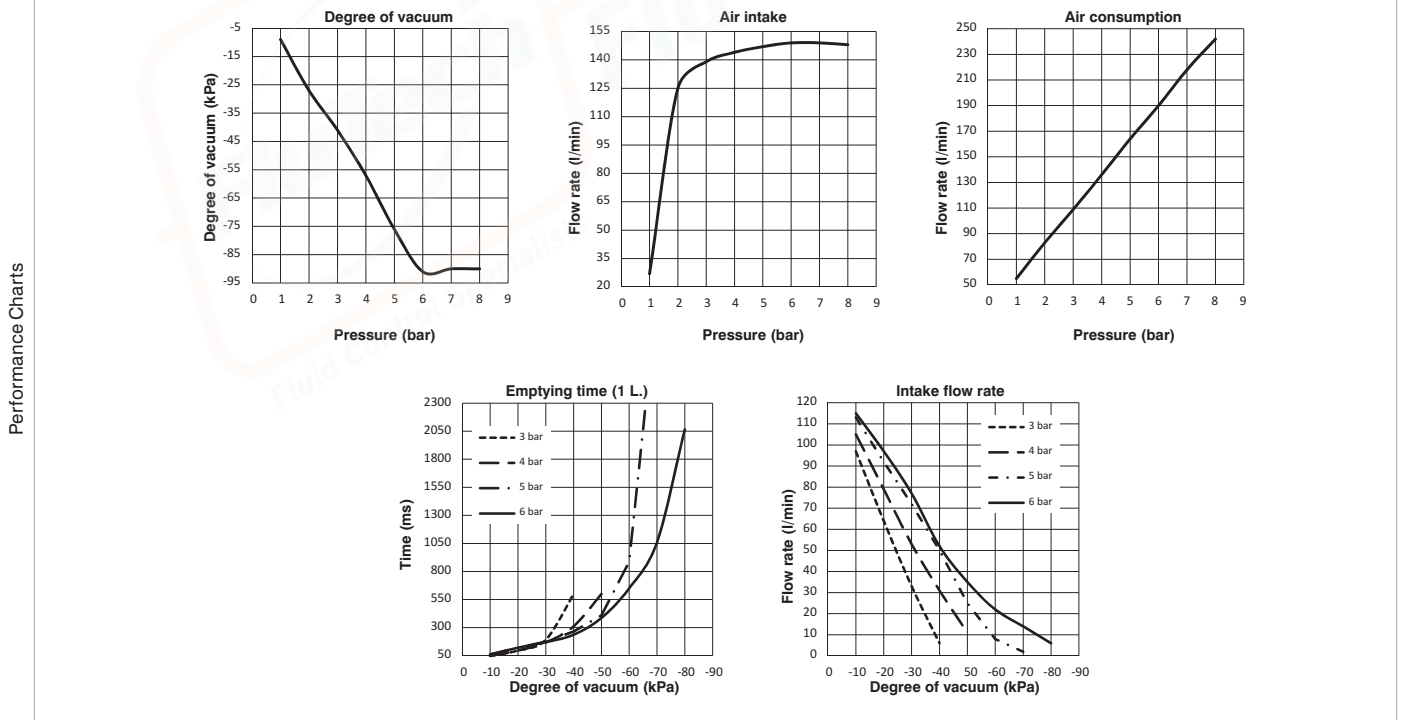


Ordering code	
<b>19M38.S.18.HV.⊙</b>	
OPTIONS	
⊙	VS = vacuum gauge + silencer
	OS = only silencer

Single stage generator with high suction capacity due to a pair of nozzles mounted in parallel; they are particularly quiet thanks to a free-flow type silencer, standard-fitted with a vacuum gauge, and allows direct connection with a vacuum switch or alternatively a solenoid valve for quick detachment via direct blowing into the vacuum connection. Suitable for decentralised connection of one or more suction cups.

**Operational characteristics**

- Inlet pressure (bar)	2	4	6
- Degree of Vacuum (-kPa)	27	57	91
- Intake flow rate (l/min)	125	144	149
- Air consumption (l/min)	83	136	190

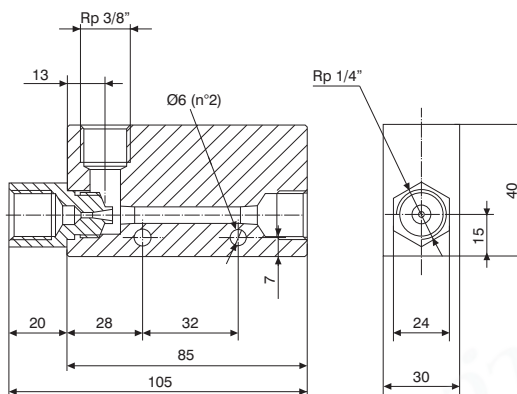


**Technical characteristics**

Fluid	Unlubricated filtered air
Pressure (bar)	1 ... 8
Temperature (°C)	-10 ... +80
Weight (gr.)	450



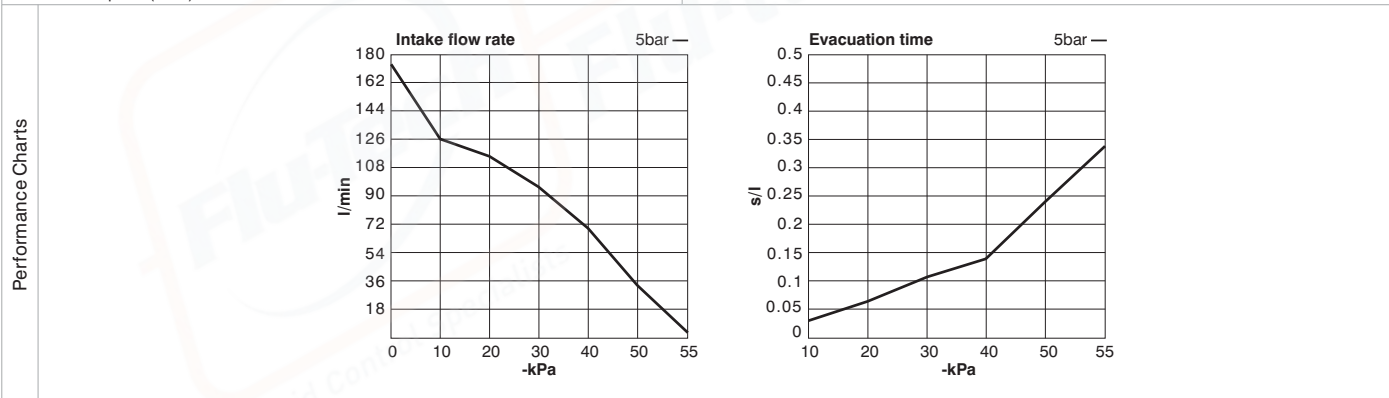
High-flow single stage vacuum generator G3/8"



Ordering code  
**19M38.S.20.HF.00**

Single stage high suction power generators operating using a single large Venturi nozzle; particularly silent thanks to a free-flow silencer which is mounted separately. Suitable for use in dusty environments and in applications where a large suction capacity and an average degree of vacuum are required (57 -kPa).

Operational characteristics	
- Inlet pressure (bar)	5
- Degree of Vacuum (-kPa)	57
- Intake flow rate (l/min)	170
- Air consumption (l/min)	180



Inlet pressure (bar)	Air consumption (l/min)	Evacuation time (s/l) at different levels of vacuum (-kPa)							Degree of Vacuum max. (-kPa)
		0	10	20	30	40	50	55	
5	180	170	125	115	95	70	35.5	7.5	57

Inlet pressure (bar)	Air consumption (l/min)	Evacuation time (s/l) at different levels of vacuum (-kPa)						Degree of Vacuum max. (-kPa)
		10	20	30	40	50	55	
5	180	0.029	0.062	0.105	0.138	0.246	0.338	57

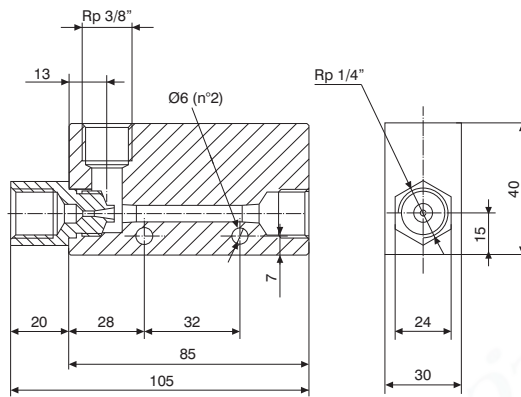
Technical characteristics	
Fluid	Unlubricated filtered air
Pressure (bar)	1 ... 6
Temperature (°C)	0 ... +60
Weight (gr.)	327
Noise (dBA)	72

Accessories	
19S12.S	Silencer G1/2"

VACUUM GENERATORS



► **High-flow single stage vacuum generator G3/8"**



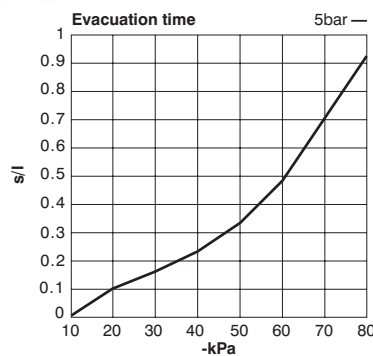
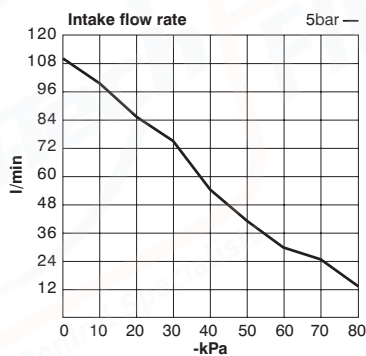
Ordering code
<b>19M38.S.20.HH.00</b>

Single stage high suction power generators operating using a single large Venturi nozzle; particularly silent thanks to a free-low silencer which is mounted separately. Suitable for use in dusty environments and in applications where a large suction capacity and a high degree of vacuum are required (92 -kPa).

**Operational characteristics**

- Inlet pressure (bar)	5
- Degree of Vacuum (-kPa)	92
- Intake flow rate (l/min)	110
- Air consumption (l/min)	180

Performance Charts



Inlet pressure (bar)	Air consumption (l/min)	Evacuation time (s/l) at different levels of vacuum (-kPa)										Degree of Vacuum max. (-kPa)
		0	10	20	30	40	50	60	70	80		
5	180	110	100	85	75	55	40.5	30	20	12	92	

Inlet pressure (bar)	Air consumption (l/min)	Evacuation time (s/l) at different levels of vacuum (-kPa)								Degree of Vacuum max. (-kPa)
		10	20	30	40	50	60	70	80	
5	180	0.043	0.1	0.167	0.23	0.338	0.492	0.707	0.923	92

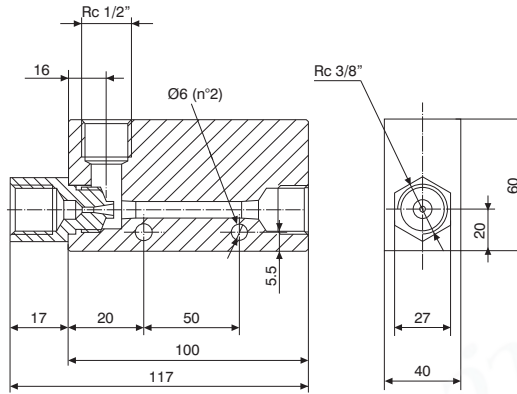
**Technical characteristics**

Fluid	Unlubricated filtered air
Pressure (bar)	1 ... 6
Temperature (°C)	0 ... +60
Weight (gr.)	327
Noise (dBA)	72

**Accessories**

<b>19S12.S</b>	Silencer G1/2"
----------------	----------------

High-flow single stage vacuum generator G1/2"



Ordering code  
**19M12.S.25.HF.00**

Single stage high suction power generators operating using a single large Venturi nozzle; particularly silent thanks to a free-flow silencer which is mounted separately. Suitable for use in dusty environments and in applications where a large suction capacity and an average degree of vacuum are required (57 -kPa).

Operational characteristics	
- Inlet pressure (bar)	5
- Degree of Vacuum (-kPa)	57
- Intake flow rate (l/min)	250
- Air consumption (l/min)	265

**Intake flow rate** 5bar

-kPa	l/min
0	250
10	225
20	200
30	150
40	100
50	60
55	40

**Evacuation time** 5bar

-kPa	s/l
10	0.03
20	0.04
30	0.07
40	0.12
50	0.18
55	0.30

Inlet pressure (bar)	Air consumption (l/min)	Evacuation time (s/l) at different levels of vacuum (-kPa)							Degree of Vacuum max. (-kPa)
		0	10	20	30	40	50	55	
5	265	250	215	200	150	105	60	36	57

Inlet pressure (bar)	Air consumption (l/min)	Evacuation time (s/l) at different levels of vacuum (-kPa)						Degree of Vacuum max. (-kPa)
		10	20	30	40	50	55	
5	265	0.021	0.046	0.076	0.123	0.184	0.3	57

Technical characteristics	
Fluid	Unlubricated filtered air
Pressure (bar)	1 ... 6
Temperature (°C)	0 ... +60
Weight (gr.)	660
Noise (dBA)	75

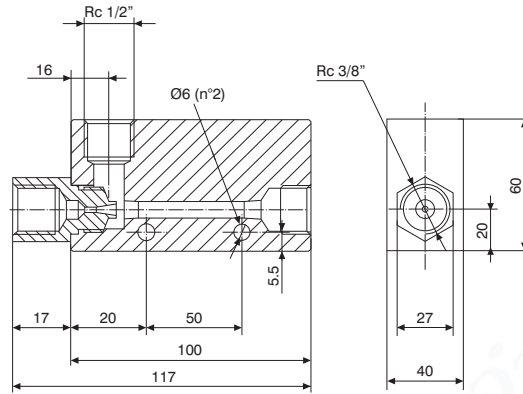
Accessories	
19S34.R	Silencer G3/4"

VACUUM GENERATORS



► High-flow single stage vacuum generator G1/2"

Ordering code
<b>19M12.S.25.HH.00</b>

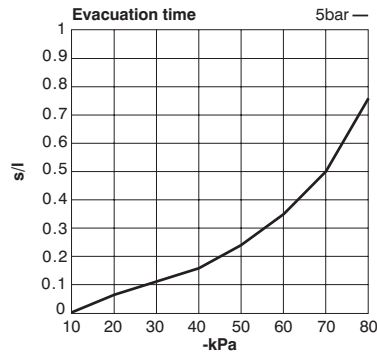
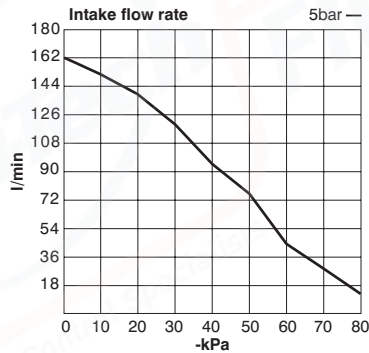


Single stage high suction power generators operating using a single large Venturi nozzle; particularly silent thanks to a free-low silencer which is mounted separately. Suitable for use in dusty environments and in applications where a large suction capacity and a high degree of vacuum are required (92 -kPa).

**Operational characteristics**

- Inlet pressure (bar)	5
- Degree of Vacuum (-kPa)	92
- Intake flow rate (l/min)	160
- Air consumption (l/min)	265

Performance Charts



VACUUM GENERATORS

Inlet pressure (bar)	Air consumption (l/min)	Evacuation time (s/l) at different levels of vacuum (-kPa)										Degree of Vacuum max. (-kPa)
		0	10	20	30	40	50	60	70	80		
5	265	160	155	140	120	95	72	47	28	15	92	

Inlet pressure (bar)	Air consumption (l/min)	Evacuation time (s/l) at different levels of vacuum (-kPa)								Degree of Vacuum max. (-kPa)
		10	20	30	40	50	60	70	80	
5	265	0.03	0.069	0.112	0.168	0.241	0.345	0.494	0.753	92

**Technical characteristics**

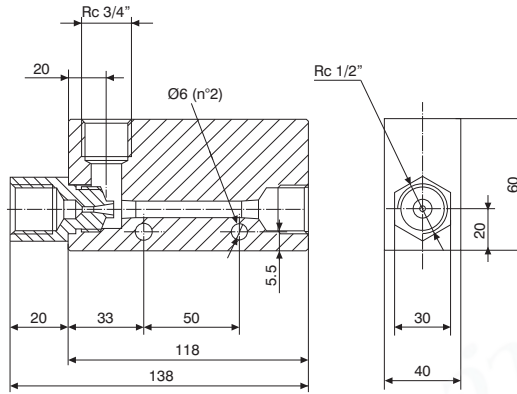
Fluid	Unlubricated filtered air
Pressure (bar)	1 ... 6
Temperature (°C)	0 ... +60
Weight (gr.)	660
Noise (dBA)	75

**Accessories**

19S34.R	Silencer G3/4"
---------	----------------



High-flow single stage vacuum generator G3/4"



Ordering code  
**19M34.S.30.HF.00**

Single stage high suction power generators operating using a single large Venturi nozzle; particularly silent thanks to a free-low silencer which is mounted separately. Suitable for use in dusty environments and in applications where a large suction capacity and an average degree of vacuum are required (57 -kPa).

Operational characteristics	
- Inlet pressure (bar)	5
- Degree of Vacuum (-kPa)	57
- Intake flow rate (l/min)	350
- Air consumption (l/min)	385

**Intake flow rate** 5bar —

**Evacuation time** 5bar —

VACUUM GENERATORS

Inlet pressure (bar)	Air consumption (l/min)	Evacuation time (s/l) at different levels of vacuum (-kPa)							Degree of Vacuum max. (-kPa)
		0	10	20	30	40	50	55	
5	385	350	295	267	215	150	85	41	57

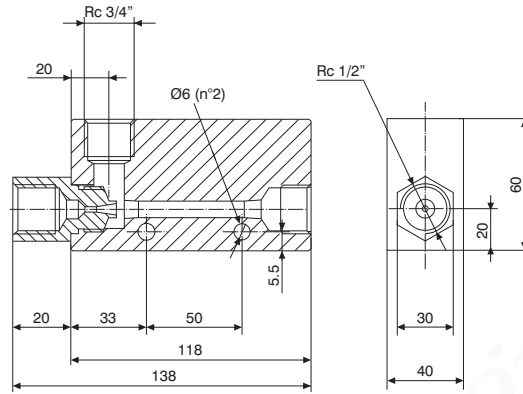
Inlet pressure (bar)	Air consumption (l/min)	Evacuation time (s/l) at different levels of vacuum (-kPa)						Degree of Vacuum max. (-kPa)
		10	20	30	40	50	55	
5	385	0.017	0.035	0.058	0.086	0.132	0.219	57

Technical characteristics	
Fluid	Unlubricated filtered air
Pressure (bar)	1 ... 6
Temperature (°C)	0 ... +60
Weight (gr.)	774
Noise (dBA)	75

Accessories	
19S34.R	Silencer G3/4"



► High-flow single stage vacuum generator G3/4"



Ordering code
<b>19M34.S.30.HH.00</b>

Single stage high suction power generators operating using a single large Venturi nozzle; particularly silent thanks to a free-low silencer which is mounted separately. Suitable for use in dusty environments and in applications where a large suction capacity and a high degree of vacuum are required (92 -kPa).

VACUUM GENERATORS

Operational characteristics	
- Inlet pressure (bar)	5
- Degree of Vacuum (-kPa)	92
- Intake flow rate (l/min)	225
- Air consumption (l/min)	385

**Intake flow rate** 5bar —

**Evacuation time** 5bar —

Inlet pressure (bar)	Air consumption (l/min)	Evacuation time (s/l) at different levels of vacuum (-kPa)										Degree of Vacuum max. (-kPa)
		0	10	20	30	40	50	60	70	80		
5	385	225	200	160	135	105	78	55	33	19	92	

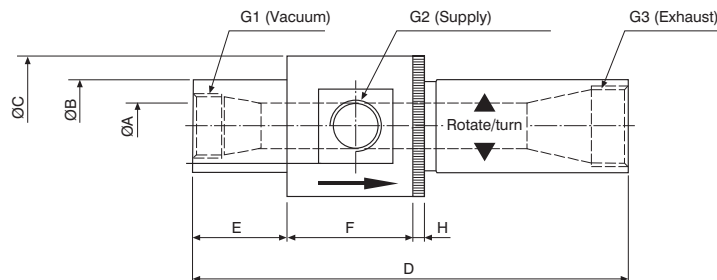
Inlet pressure (bar)	Air consumption (l/min)	Evacuation time (s/l) at different levels of vacuum (-kPa)								Degree of Vacuum max. (-kPa)
		10	20	30	40	50	60	70	80	
5	385	0.029	0.058	0.092	0.136	0.196	0.265	0.406	0.625	92

Technical characteristics	
Fluid	Unlubricated filtered air
Pressure (bar)	1 ... 6
Temperature (°C)	0 ... +60
Weight (gr.)	774
Noise (dBA)	75

Accessories	
19S34.R	Silencer G3/4"



Adjustable vacuum generator conveyor



Code	ØA	ØB	ØC	D	E	F	H	G1	G2	G3	Weight (gr.)
19M14.S.00.SS.RG	6.5	19	32	94-105	22	32	5	G1/4"	G1/8"	G1/4"	96
19M38.S.00.SS.RG	10	25	45	155-165	38	45	5	G3/8"	G3/8"	G1/2"	271.6
19M12.S.00.SS.RG	13	32	51	155-160	38	51	5	G1/2"	G3/8"	G3/4"	377.2
19M34.S.00.SS.RG	19	38	58	175-189	38	51	5	G3/4"	G1/2"	G1"	526.8

Based on the Ventury principle, these differ from traditional ones because they have a much better ejector and are adjustable, this characteristic makes it possible to change the device's low rate and degree of vacuum without affecting the inlet pressure. Their special shape and their operating principle make them suitable for suction and the transfer of powders, granules, sawdust, metal chips, liquid or dry food products, etc., to control suction cups in the presence of large quantities of powders or liquids; these can also be used to suction smoke, coolant fog, water vapour, etc.

Operational characteristics	
- Inlet pressure (bar)	4 ... 6 (Max. 7)
- Max. Degree of Vacuum (-kPa)	84
- Max. Intake flow rate (l/min)	3390
- Max. Air consumption (l/min)	2550

Code	Degree of Vacuum (-kPa)	Inlet pressure (bar)				
		17	34	50	68	84
		5.5				
19M14.S.00.SS.RG	Air consumption (l/min)	112	169	233	276	342
19M38.S.00.SS.RG		176	327	485	595	825
19M12.S.00.SS.RG		340	625	795	940	1280
19M34.S.00.SS.RG		650	875	1250	1790	2550

Code	Degree of Vacuum (-kPa)	Inlet pressure (bar)				
		17	34	50	68	84
		5.5				
19M14.S.00.SS.RG	Intake flow rate (l/min)	280	240	200	162	125
19M38.S.00.SS.RG		846	735	620	520	395
19M12.S.00.SS.RG		1695	1325	1130	990	650
19M34.S.00.SS.RG		3390	2460	1970	1440	1130

Accessories		Description
19S14.S	Silencer G1/4"	for 19M14.S.00.SS.RG
19S12.R	Silencer G1/2"	for 19M38.S.00.SS.RG
19S34.R	Silencer G3/4"	for 19M12.S.00.SS.RG
19S10.R	Silencer G1"	for 19M34.S.00.SS.RG

VACUUM GENERATORS

