

**Sensor with 2.5 m. cable**

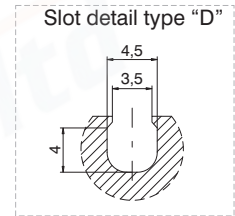
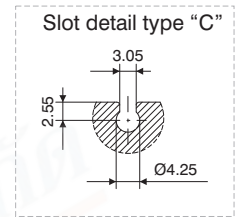
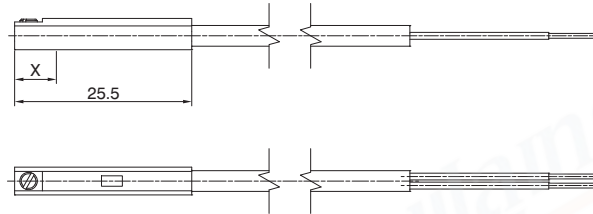
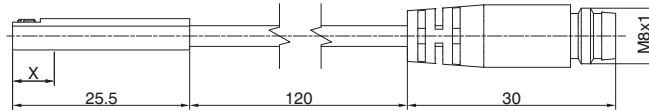


Weight g 22

**Sensor with cable and M8 connector**



Weight g 10



**Ordering code**

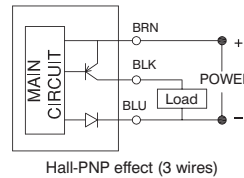
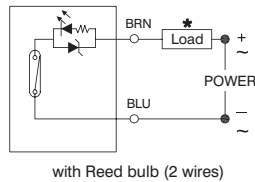
**Ampulla Reed sensors, with led, Universal, N.O. (Normally open)**

		X=point of commutation
1581.U	(2 wires) cable 2.5 mt.	10 mm
TRS.U	(2 wires) cable 100 mm, M8 connector (use MC1 or MC2 connectors)	10 mm

**Hall effect sensors, with led, DC, N.O. (Normally open)**

		X=point of commutation
1581.HAP	PNP (3 wires) cable 2.5 mt.	7,5 mm
THS.P	PNP (3 wires) cable 100 mm, M8 connector (use MCH1 or MCH2 connectors)	7,5 mm

**Diagrams and connections**



\* The load (LOAD) can be connected either to negative or positive pole

Technical characteristics	1581.U	TRS.U	1581.HAP	THS.P
Type of contact	N.O.			
Maximum current	50mA			
Maximum permanent power	8 VA - 1,5 W		1,5 W	
Voltage range	5 - 30V DC/AC		10 - 30 V DC	
Working temperature	-10°C - +70°C			
Maximum voltage drop	3,5 V		1 V	
Cable section (mm <sup>2</sup> )	2 x 0,14 Ø2,8 mm PUR		3 x 0,14 Ø2,8 mm PUR	
Degree of protection	IP 67			

**Cable ordering code**

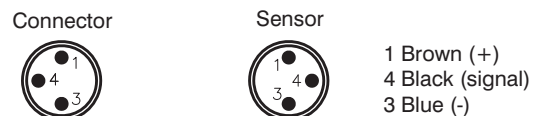
**Connection 2 wires**

- MC1** cable 2 wires l=2.5m with M8 connector
- MC2** cable 2 wires l=5m with M8 connector
- MC3** cable 2 wires l=10m with M8 connector



**Connection 3 wires**

- MCH1** cable 3 wires l=2.5m with M8 connector
- MCH2** cable 3 wires l=5m with M8 connector
- MCH3** cable 3 wires l=10m with M8 connector





► Sensor with cable

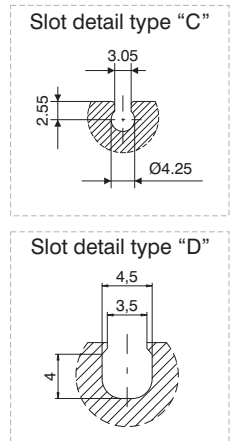
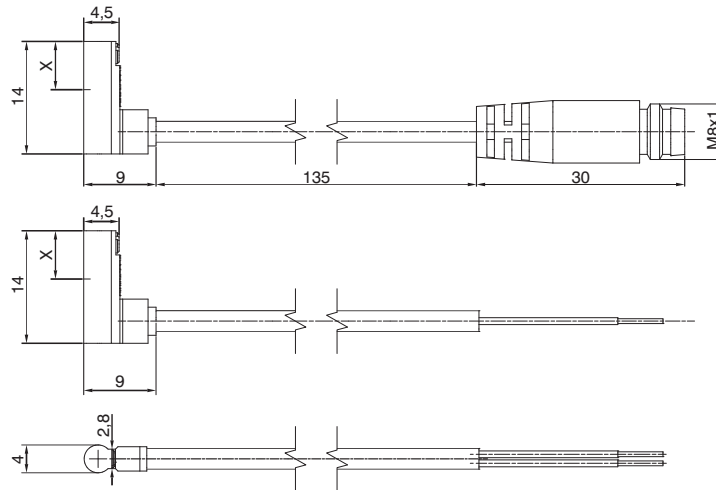


Weight g 22

► Sensor with cable and M8 connector



Weight g 10



Ordering code

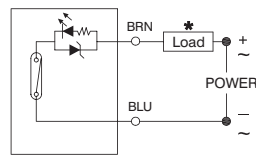
► Ampulla Reed sensors, with led, DC, N.O. (Normally open)

		X=point of commutation
1583.DC	(2 wires) cable 2 mt.	6 mm

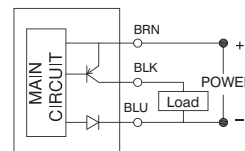
► Hall effect sensors, with led, N.O. (Normally open)

		X=point of commutation
1583.HAP	PNP (3 wires) cable 3 mt.	6 mm
THR.P	PNP (3 wires) cable 100 mm, M8 connector (use MCH1 or MCH2 connectors)	6 mm

Diagrams and connections



with Reed bulb (2 wires)



Hall-PPNP effect (3 wires)

\* The load (LOAD) can be connected either to negative or positive pole

TECHNICAL CHARACTERISTICS	1583.DC	1583.HAP	THR.P
Type of contact		N.O.	
Maximum current	20mA		50mA
Maximum permanent power	0,6 W		1,5 W
Voltage range	10 - 28V DC		4,5 - 28 V DC
Working temperature		-10°C - +70°C	
Maximum voltage drop	3,5 V		0,5 V
Cable	Ø2,6 mm PVC - 2 m		Ø2,6 mm PVC - 3 m
Degree of protection		IP 67	

Cable ordering code

- MCH1 cable 3 wires l=2.5m with M8 connector
- MCH2 cable 3 wires l=5m with M8 connector

Connection 3 wires

Connector



Sensor

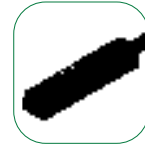


- 1 Brown (+)
- 4 Black (signal)
- 3 Blue (-)



Rectangular section version (for sensor slot type "B")

SERIES	DESCRIPTION	MOUNTED
1200	Microbore with threaded end covers and "TECNO-MIR" microbore "MIR" with rolled end covers Microbore "MIR-INOX" with rolled end covers for cylinders Ø32 - Ø40	with clamps code <b>1260.Ø.FS</b> with clamps code <b>1280.Ø.FS</b> with clamps code <b>1280.Ø.FSX</b> with brackets code <b>1320.AS</b>
1319 - 1320 1325 - 1345 1330 - 1332 1348 - 1349	for cylinders Ø50 ÷ Ø63	with brackets code <b>1320.BS</b>
	for cylinders Ø80 ÷ Ø100	with brackets code <b>1320.CS</b>
	for cylinders Ø125	with brackets code <b>1320.DSC</b>
	for cylinders Ø160	with brackets code <b>1320.ESC</b>
	for cylinders Ø200	with brackets code <b>1320.FSC</b>
1386-87 / 1396-97	Cylinders according to standard ISO 15552 ECOPLUS	directly on groove
	Cylinders according to standard ISO 15552 ECOLIGHT	
1390 - 1391	<b>Warning:</b> To use only into the lateral slot, from Ø32 to Ø63 cylinders. (do not use into the 2 slots positioned on the side of feeding connection)	directly on groove
1370÷1373	Cylinders ECOFLAT	directly on groove
	Short stroke compact cylinders	with adapter code <b>1380.01F</b>
1500	Compact cylinders "Europe"	from Ø12 to Ø25: directly on groove from Ø32 to Ø50: directly on groove or with adapter <b>1380.01F</b> from Ø63 to Ø100: with adapter cod. <b>1380.01F</b>
	Compact cylinder according to standard ISO 21287 ECOMPACT	directly on groove
1605	Rodless cylinders	with adapter code <b>1600.B</b>
6100	Guided compact cylinder (Ø20 - Ø63)	
6101	Heavy duty guided shortstroke cylinder	
6200	Twin rod slides units	
6210	Twin through rod slides units	
6301	Pneumatic grippers, angular standard version	
6303	180° angular gripper rack & pinion style	
6310	Parallel style pneumatic grippers standard version (Ø10 - Ø25)	
6311	Parallel style pneumatic grippers wide opening	
6312	3 finger parallel style pneumatic grippers (Ø32 - Ø125)	directly on groove



Square section version (for sensor slot type "B")

SERIES	DESCRIPTION	MOUNTED
1200	Microbore with threaded end covers and "TECNO-MIR" microbore "MIR" with rolled end covers Microbore "MIR-INOX" with rolled end covers for cylinders Ø32 - Ø40	with clamps code <b>1260.Ø.FS</b> with clamps code <b>1280.Ø.FS</b> with clamps code <b>1280.Ø.FSX</b> with brackets code 1320.ASC
1319 - 1320 1325 - 1345 1330 - 1332 1348 - 1349	for cylinders Ø50 - Ø63	with brackets code 1320.BSC
	for cylinders Ø80 - Ø100	with brackets code 1320.CSC
	for cylinders Ø125	with brackets code 1320.DSC
	for cylinders Ø160	with brackets code 1320.ESC
	for cylinders Ø200	with brackets code 1320.FSC
1386-87 / 1396-97	Cylinders according to standard ISO 15552 ECOPLUS	directly on groove
1390 - 1391	Cylinders according to standard ISO 15552 ECOLIGHT	directly on groove
1370÷1373	Cylinders ECOFLAT	directly on groove
1500	Compact cylinders "Europe"	from Ø12 to Ø25: directly on groove from Ø32 to Ø50: directly on groove
	Compact cylinder according to standard ISO 21287 ECOMPACT	directly on groove
6100	Guided compact cylinder (Ø20 - Ø63)	
6101	Heavy duty guided shortstroke cylinder	
6200	Twin rod slides units	
6210	Twin through rod slides units	
6301	Pneumatic grippers, angular standard version	
6303	180° angular gripper rack & pinion style	
6310	Parallel style pneumatic grippers standard version (Ø10 - Ø25)	
6311	Parallel style pneumatic grippers wide opening	
6312	3 finger parallel style pneumatic grippers (Ø32 - Ø125)	directly on groove
6411	Single rack rotary actuators	



Round section version (for sensor slot type "C" and "D")

SERIES	DESCRIPTION	MOUNTED
6100	Guided compact cylinder (Ø12 - Ø16)	
6302	Pneumatic grippers, 180° angular	
6310	Parallel style pneumatic grippers standard version (Ø16 and Ø25)	
6312	3 finger parallel style pneumatic grippers (Ø16 - Ø25)	
6400	Double rack rotary actuators with turn table	directly on groove
6420	Vane type rotary actuators (from Ø10 to Ø40)	
6500	Arbitrary mount cylinders	
6600	Slide cylinders	
6700	Guide cylinders	



Round section 90° cable version (for sensor slot type "C" and "D")

SERIES	DESCRIPTION	MOUNTED
6420	Vane type rotary actuators	directly on groove

