

3 finger parallel style pneumatic grippers



Ordering code

6312.Ø.D

- 16
- 20
- 25
- 32
- 40
- 50
- 63
- 80
- 100
- 125

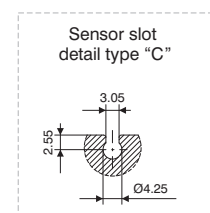
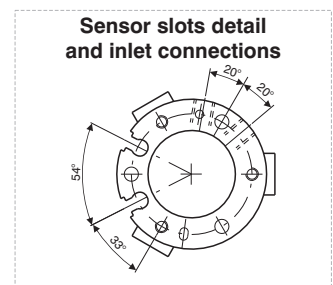
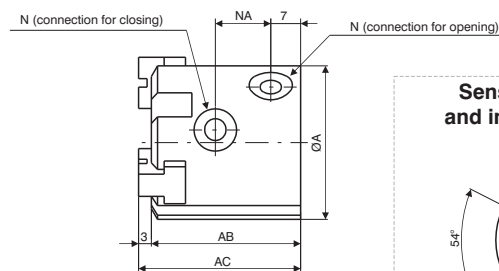
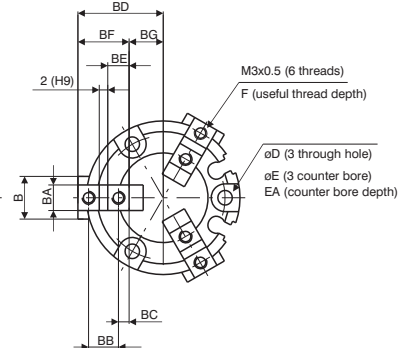
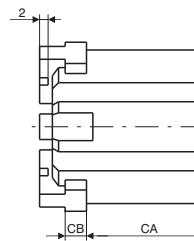
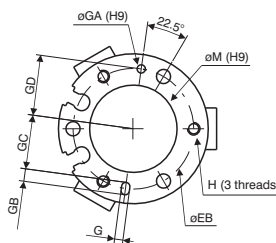
Construction characteristics

Body	aluminium
Piston	aluminium
Wedge	steel
Fingers	steel

Operational characteristics

Function	double acting
Fluid	Filtered air.
	No lubrication needed, if applied it shall be continuous.
Working pressure	2 - 6 bar (Ø16 - Ø20 - Ø25) - 1 - 6 bar (Ø32 - Ø125)
Working temperature	-5°C - +70°C
Maximum operating frequency	from Ø 16 to Ø 25, 120 cycles/minute from Ø 32 to Ø 63, 60 cycles/minute from Ø 80 to Ø 125, 30 cycles/minute

Overall dimensions Ø16 - Ø25

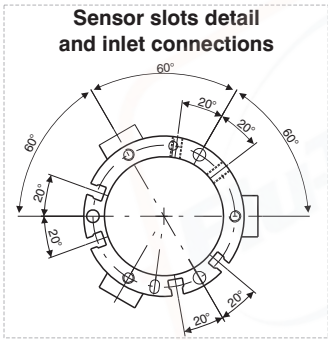
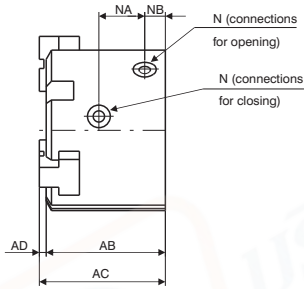
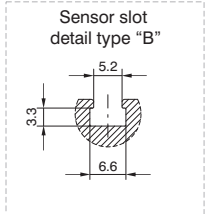
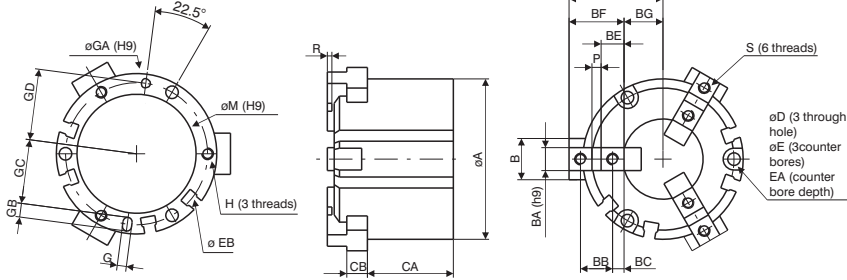


Bore	Ø16	Ø20	Ø25
ØA	30	36	42
AB	32	35	37
AC	35	38	40
B	8	10	12
BA <sup>H9</sup>	5	6	6
BB	6	7	8
BC	2	2.5	3
BD	open	17	20
	close	15	18
BE	4	5	6
BF	10	12	14
BG	open	7	8
	close	5	6
CA	25	27	28
CB	4	5	5
D	3,4	3,4	4,5
E	6,5	6,5	8
EA	8	9,5	10
EB	25	29	34
F	5	6	6
G <sup>H9</sup>		2	3
	Useful depth	2	3
ØGA <sup>H9</sup>		2	3
	Useful depth	2	3
GB	3	3	5
GC	11	13	14,5
GD	12,5	14,5	17
H	M3x0,5	M3x0,5	M4x0,7
	Useful depth	4,5	6
ØM <sup>H9</sup>		17	21
	Useful depth	1,5	1,5
N	M3x0,5	M5x0,8	M5x0,8
NA	11	13	15
Weight (g)	62	98	139



# Pneumatic grippers Series 6312 - 3 fingers parallel style pneumatic grippers (air chuck)

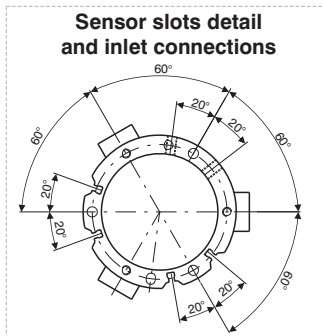
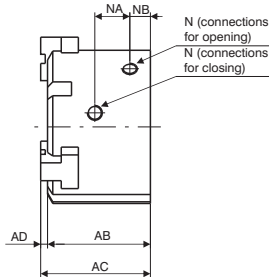
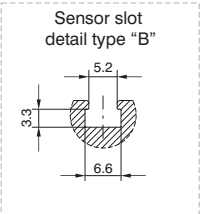
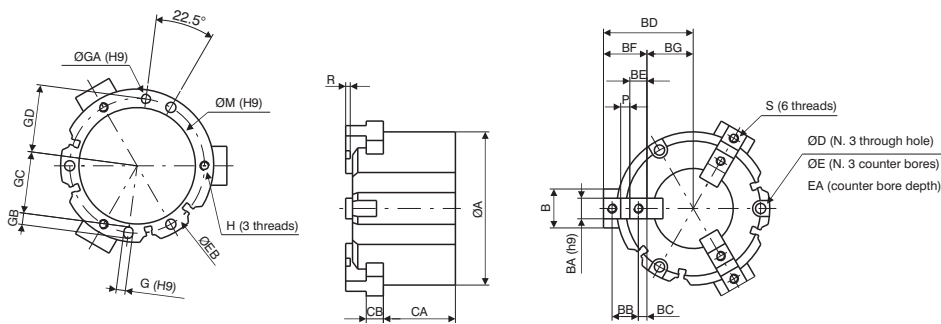
## Overall dimensions Ø32 and Ø80



Bore	Ø32	Ø40	Ø50	Ø63	Ø80
ØA	52	62	70	86	106
AB	41	44	52	62	77
AC	44	47	55	66	82
AD	3	3	3	4	5
B	14	16	18	24	28
BA <sup>H9</sup>	8	8	10	12	14
BB	11	12	14	17	20
BC	4,5	4,5	5	5,5	6
BD	open: 32	open: 35	open: 41	open: 51	open: 63,5
	close: 28	close: 31	close: 35	close: 43	close: 53,5
BE	9	9	10	11	12
BF	20	21	24	28	32
BG	open: 12	open: 14	open: 17	open: 23	open: 31,5
	close: 8	close: 10	close: 11	close: 15	close: 21,5
CA	30,5	32	37,5	44	56
CB	6	7	9	11	12
D	4,5	5,5	5,5	6,6	6,6
E	8	9,5	9,5	11	11
EA	9	9	12	14	19
EB	44	53	62	76	95
H	M4x0,7	M5x0,8	M5x0,8	M6x1	M6x1
	Useful depth: 6	Useful depth: 7,5	Useful depth: 10	Useful depth: 9	Useful depth: 12
G <sup>H9</sup>	3	4	4	5	6
	Useful depth: 3	Useful depth: 4	Useful depth: 4	Useful depth: 5	Useful depth: 6
ØGA <sup>H9</sup>	3	4	4	5	6
	Useful depth: 3	Useful depth: 4	Useful depth: 4	Useful depth: 5	Useful depth: 6
GB	5	6	6	7	8
GC	19,5	23,5	28	34,5	43,5
GD	2,2	2,6,5	3,1	3,8	4,7,5
N	M5x0,8	M5x0,8	M5x0,8	M5x0,8	G1/8
	Useful depth: 34	Useful depth: 42	Useful depth: 52	Useful depth: 65	Useful depth: 82
ØM <sup>H9</sup>	2	2	2	2,5	3
	Useful depth: 16	Useful depth: 17	Useful depth: 20	Useful depth: 22	Useful depth: 27
NA	16	17	20	22	27
NB	8	9	9	12	13,5
P <sup>H9</sup>	2	3	4	6	8
R	2	2	2	3	4
S	M4x0,7	M4x0,7	M5x0,8	M5x0,8	M6x1
	Useful depth: 8	Useful depth: 8	Useful depth: 10	Useful depth: 10	Useful depth: 12
Weight (g)	240	354	542	1000	1850

PNEUMATIC ACTUATION

## Overall dimensions Ø100 and Ø125



Bore	Ø100	Ø125
ØA	134	166
AB	90	114
AC	96	122
AD	6	8
B	34	40
BA <sup>H9</sup>	18	22
BB	23	31
BC	7,5	10,5
BD	open: 78	open: 98
	close: 66	close: 82
BE	15	21
BF	38	52
BG	open: 40	open: 46
	close: 28	close: 30
CA	63	84
CB	15	18
ØD	9	11
ØE	14	17,5
EA	21	34
EB	118	148
G <sup>H9</sup>	8	10
	Useful depth: 6	Useful depth: 8
ØGA <sup>H9</sup>	8	10
	Useful depth: 6	Useful depth: 8
GB	10	12
GC	54	68
GD	59	74
H	M8x1,25	M10x1,5
	Useful depth: 16	Useful depth: 20
ØM <sup>H9</sup>	102	130
	Useful depth: 4	Useful depth: 6
N	G1/4	G3/8
NA	30,6	38
NB	18	23,5
P <sup>H9</sup>	8	10
R	4	6
S	M8x1,25	M10x1,5
	Useful depth: 16	Useful depth: 20
Weight (g)	3360	6430

Gripping force (N)

