

## Series 1260 - 1320 - Linear control units

### Construction characteristics

Body	extruded shape anodized aluminium alloy 6060
Bushings	sintered bronze
Wiper	oil resitant NBR rubber
Rods	chromed C43 steel
Plate	plated zinc steel
Mounting block	plated zinc steel

### Technical characteristics

Max. suggested strokes for 1200 series:

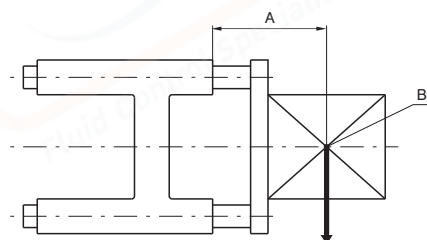
Diameter	20	25
Stroke mm	200	250

Max. suggested strokes for 1320 series:

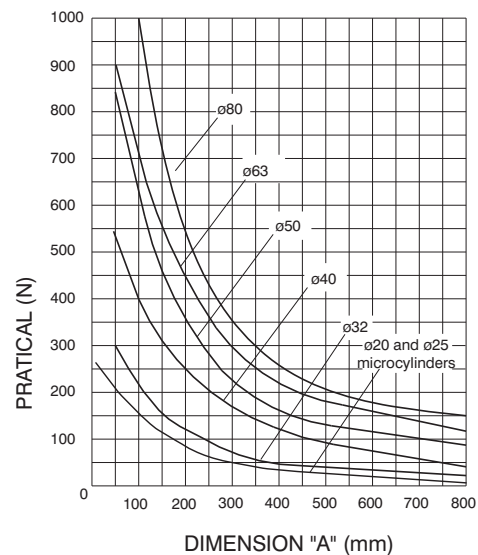
Diameter	32	40	50	63	80
Stroke mm	300	350	450	500	550

On request are available strokes up to 2800 mm

Loading diagram based on dimension "A"



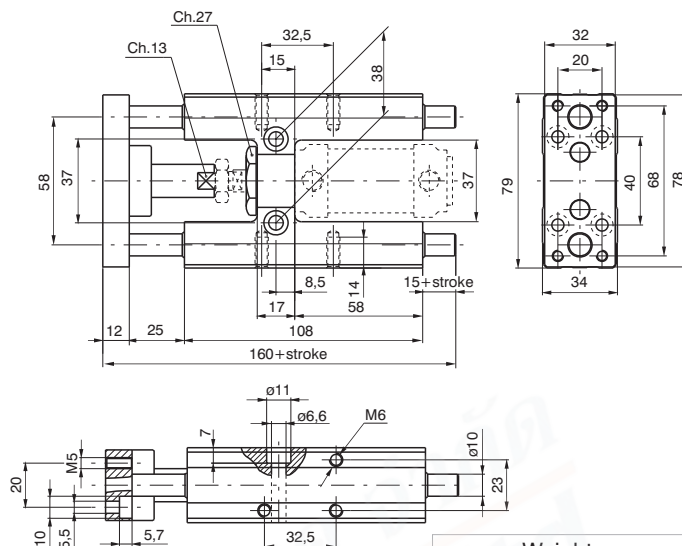
A = Protusion  
B = Load centre of gravity



### Use and maintenance

Follow the indication of the above diagram as far as loads are concerned. A large quantity of grease is placed between the two wipers during assembly, therefore the linear control units should not require special maintenance.

### Dimensions for microbore cylinders ISO 6432



Ordering code

**1260.Ø.stroke.GLB**

(Microbore cylinders ISO 6432 must be ordered separately)

**Standard strokes**

ø 20 100 - 150 - 200 mm

ø 25 100 - 150 - 200 - 250 mm

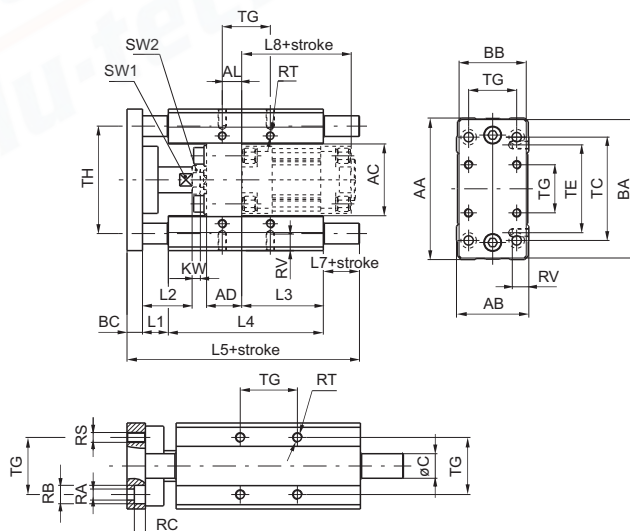
Weight g

stroke 100 every 50 mm

970 60

**Sensors and sensor clamps:** Use standard sensors and clamps.

### Dimensions for microbore cylinders ISO 15552



Ordering code

**1320.Ø.stroke.GLB**

(Cylinders must be ordered separately)

Bore	Ø32	Ø40	Ø50	Ø63	Ø80
stroke 100	1720	2900	4700	6000	11300
every 50 mm	91	159	159	250	380

Bore	AA	AB	AC	AD	AL	BA	BB	BC	C	KW	L1	L2	L3	L4	L5
32	97	49	50	24	4.3	93	45	12	12	6	25	39	76	125	187
40	115	58	57.5	28	11	112	55	12	16	7	25	44	81	140	207
50	137	70	69.5	34	18.8	134	65	15	20	8	25	48	79	150	225
63	152	85	84.5	34	15.3	149	80	15	20	8	25	48	111	182	242
80	189	105	106	34	21	180	100	20	25	9	25	53	128	215	302

Bore	L7	L8	RA	RB	RC	RS	RT	RV	SW1	SW2	TC	TE	TG	TH
32	25	94	6.6	11	6.5	M6	M6	12	15	17	78	61	32.5	74
40	30	105	6.6	11	6.5	M6	M6	14	15	19	84	69	38	87
50	35	106	9	15	9	M8	M8	16	22	24	100	85	46.5	104
63	20	121	9	15	9	M8	M8	16	22	24	105	100	56.5	119
80	42	128	11	18	11	M10	M10	20	27	24	130	130	72	148

**Standard strokes**

Ø 32 100 - 150 - 200 - 250 - 300 mm

Ø 40 100 - 150 - 200 - 250 - 300 - 350 mm

Ø 50 100 - 150 - 200 - 250 - 300 - 350 - 400 - 450 mm

Ø 63 100 - 150 - 200 - 250 - 300 - 350 - 400 - 450 - 500 mm

Ø 80 100 - 150 - 200 - 250 - 300 - 350 - 400 - 450 - 500 - 550 mm

**Sensor clamps and brackets for 1319-1320 series**

Use standard sensors and brackets on the rear and following special brackets on front of cylinders for use sensors codes 1500.\_, RS.\_, HS.\_ which have the following ordering codes:

**1320.AGL** sensor bracket for cylinders Ø32 and Ø40

**1320.BGL** sensor bracket for cylinders Ø50 and Ø63

**1320.CGL** sensor bracket for cylinders Ø80