



## Series 2100

### General

This solenoid valves series has been developed to meet requirements for electronically controlled pneumatic systems and / or serial control systems already used in all manufacturing sectors.  
They have been designed to be easily assembled into groups or manifolds and include integral electrical connection to facilitate simple and speedy integration into a control system.  
The 2100 series comprises a range of products classified according to the body size of 10mm divided into 3 types "LINE", "FLAT" and "BASE".  
The 10mm. and 18 mm. 24 VDC range of valves includes a range of accessories for the production of manifolded valve assemblies with integral electrical connections.  
Modules are available in two or four station variants for flexibility and are supplied to IP40 or alternatively IP65 environmental protection.

### Construction characteristics

|                   |   |
|-------------------|---|
| Central body      | Extruded aluminium bar with chemical nickel treatment and PTFE (polytetrafluorethylene) |
| Connection plates | Technopolymer   |
| Operators         | Technopolymer   |
| Spool seals       | Oil resistant nitrile rubber - HNBR   |
| Spools            | Aluminium 2011  |
| Springs           | AISI 302 stainless steel  |
| Pistons           | Aluminium 2011  |
| Piston seals      | Oil resistant nitrile rubber - NBR  |

### Ordering codes for miniature solenoid valves

The 10 mm. miniature solenoid valve with 0,7 mm. orifice has been selected for piloting this series of valves (see Series 300).  
This results in low response times and reduced power consumption.  
The valve can be supplied with the coil upward or downward depending on the application.

Codes are as follows:

#### Coil upward code

01 = miniature sol. 12 VDC 90°conn. with led  
21 = miniature sol. 12 VDC line conn. with led  
02 = miniature sol. 24 VDC 90°conn. with led  
22 = miniature sol. 24 VDC line conn. with led

#### Coil downward code

11 = miniature sol. 12 VDC 90° conn. with led  
31 = miniature sol. 12 VDC line conn. with led  
12 = miniature sol. 24 VDC 90°conn. with led  
32 = miniature sol. 24 VDC line conn. with led  
91 = miniature sol. 12 VDC for integral electrical connections  
92 = miniature sol. 24 VDC for integral electrical connections

Miniature solenoid valves homologated are available (see Series 300).

### Use and maintenance

The average life of the solenoid valve exceeds 50.000.000 cycles when used under optimum conditions.  
Adequate lubrication reduces seals wear, just as proper filtering of supply air prevents the build-up of dirt that can cause malfunction.  
Ensure the valve is used within our recommended criteria for pressure and temperature.  
In dirty or dusty environments, the exhaust ports should be protected.  
A seal kit including the spool is available for overhauling the valve. This operation does not require a skilled worker, although a particular care should be taken when reassembling the valve.

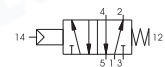
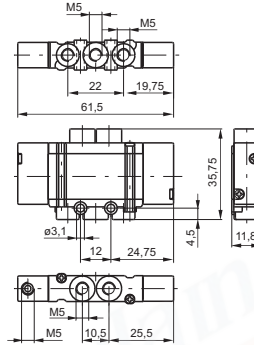


**Pneumatic - Spring**

Coding: 2115.52.00.19

**Operational characteristics**

|                                       |  |
|---------------------------------------|--|
| Fluid                                 | Filtered air. No lubrication needed, if applied it shall be continuous |
| Max working pressure (bar)            | 7  |
| Temperature °C                        | -5 ÷ +50   |
| Flow rate at 6 bar with Δp=1 (NI/min) | 150  |
| Orifice size (mm)                     | 2.5  |
| Working ports size                    | M5   |



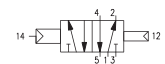
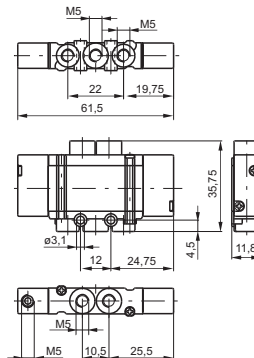
Weight 30 g  
Minimum piloting pressure 2 bar

**Pneumatic - Differential**

Coding: 2115.52.00.16

**Operational characteristics**

|                                       |  |
|---------------------------------------|--|
| Fluid                                 | Filtered air. No lubrication needed, if applied it shall be continuous |
| Max working pressure (bar)            | 7  |
| Temperature °C                        | -5 ÷ +50   |
| Flow rate at 6 bar with Δp=1 (NI/min) | 150  |
| Orifice size (mm)                     | 2.5  |
| Working ports size                    | M5   |



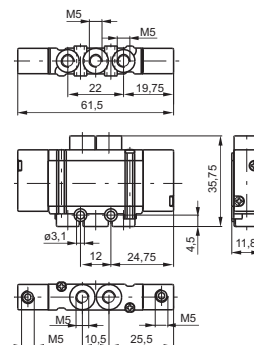
Weight 28 g  
Minimum piloting pressure 2 bar

**Pneumatic - Pneumatic**

Coding: 2115.52.00.18

**Operational characteristics**

|                                       |  |
|---------------------------------------|--|
| Fluid                                 | Filtered air. No lubrication needed, if applied it shall be continuous |
| Max working pressure (bar)            | 7  |
| Temperature °C                        | -5 ÷ +50   |
| Flow rate at 6 bar with Δp=1 (NI/min) | 150  |
| Orifice size (mm)                     | 2.5  |
| Working ports size                    | M5   |



Weight 30 g  
Minimum piloting pressure 2 bar

AIR DISTRIBUTION 1

**Solenoid - Spring**

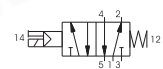
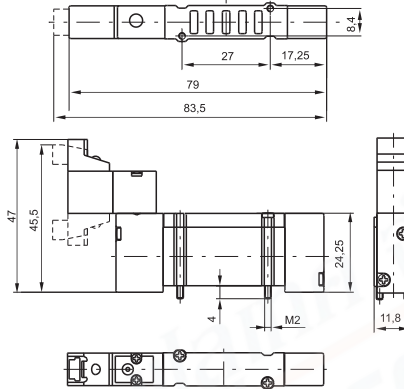
Coding: 2115.52.00.39. **T**

| Operational characteristics           |  |
|---------------------------------------|--|
| Fluid                                 | Filtered air. No lubrication needed, if applied it shall be continuous |
| Max working pressure (bar)            | 7  |
| Temperature °C                        | -5 ÷ +50   |
| Flow rate at 6 bar with Δp=1 (NI/min) | 150  |
| Orifice size (mm)                     | 2.5  |
| Working ports size                    | M5   |

| VOLTAGE   |                                       |
|-----------|---------------------------------------|
| <b>01</b> | = 12 VDC 90° conn. with led           |
| <b>21</b> | = 12 VDC line conn. with led          |
| <b>02</b> | = 24 VDC 90° conn. with led           |
| <b>22</b> | = 24 VDC line conn. with led          |
| <b>11</b> | = 12 VDC 90° conn. with led downward  |
| <b>31</b> | = 12 VDC line conn. with led downward |
| <b>12</b> | = 24 VDC 90° conn. with led downward  |
| <b>32</b> | = 24 VDC line conn. with led downward |



Weight 42 g  
Minimum piloting pressure 2 bar



**Solenoid - Differential**

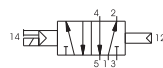
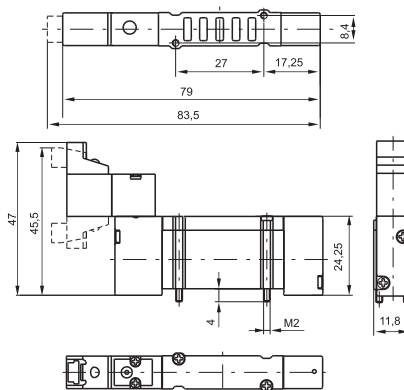
Coding: 2115.52.00.36. **T**

| Operational characteristics           |  |
|---------------------------------------|--|
| Fluid                                 | Filtered air. No lubrication needed, if applied it shall be continuous |
| Max working pressure (bar)            | 7  |
| Temperature °C                        | -5 ÷ +50   |
| Flow rate at 6 bar with Δp=1 (NI/min) | 150  |
| Orifice size (mm)                     | 2.5  |
| Working ports size                    | M5   |

| VOLTAGE   |                                       |
|-----------|---------------------------------------|
| <b>01</b> | = 12 VDC 90° conn. with led           |
| <b>21</b> | = 12 VDC line conn. with led          |
| <b>02</b> | = 24 VDC 90° conn. with led           |
| <b>22</b> | = 24 VDC line conn. with led          |
| <b>11</b> | = 12 VDC 90° conn. with led downward  |
| <b>31</b> | = 12 VDC line conn. with led downward |
| <b>12</b> | = 24 VDC 90° conn. with led downward  |
| <b>32</b> | = 24 VDC line conn. with led downward |



Weight 42 g  
Minimum piloting pressure 2 bar



**Solenoid - Solenoid**

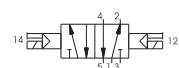
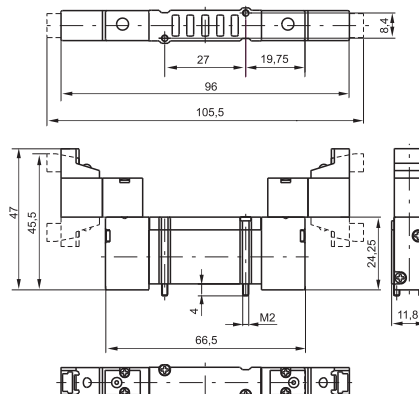
Coding: 2115.52.00.35. **T**

| Operational characteristics           |  |
|---------------------------------------|--|
| Fluid                                 | Filtered air. No lubrication needed, if applied it shall be continuous |
| Max working pressure (bar)            | 7  |
| Temperature °C                        | -5 ÷ +50   |
| Flow rate at 6 bar with Δp=1 (NI/min) | 150  |
| Orifice size (mm)                     | 2.5  |
| Working ports size                    | M5   |

| VOLTAGE   |                                       |
|-----------|---------------------------------------|
| <b>01</b> | = 12 VDC 90° conn. with led           |
| <b>21</b> | = 12 VDC line conn. with led          |
| <b>02</b> | = 24 VDC 90° conn. with led           |
| <b>22</b> | = 24 VDC line conn. with led          |
| <b>11</b> | = 12 VDC 90° conn. with led downward  |
| <b>31</b> | = 12 VDC line conn. with led downward |
| <b>12</b> | = 24 VDC 90° conn. with led downward  |
| <b>32</b> | = 24 VDC line conn. with led downward |



Weight 52 g  
Minimum piloting pressure 2 bar





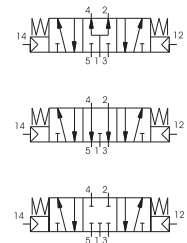
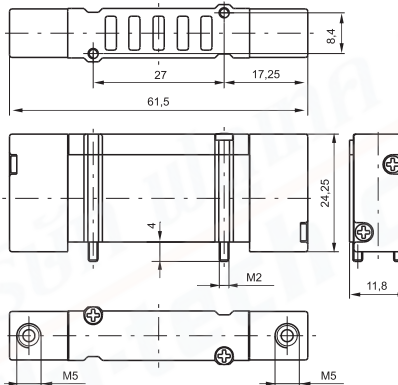
**Spool valves and solenoid valves**  
**Series 2100 - Size10mm LINE**

**Pneumatic - Pneumatic**

Coding: 2115.53.Ⓕ.18

| Operational characteristics           |  |
|---------------------------------------|--|
| Fluid                                 | Filtered air. No lubrication needed, if applied it shall be continuous |
| Max working pressure (bar)            | 7  |
| Temperature °C                        | -5 ÷ +50   |
| Flow rate at 6 bar with Δp=1 (NI/min) | 180 (Pressured centres)<br>130 (Closed centres)<br>140 (Open centres)  |
| Orifice size (mm)                     | 2.5  |
| Working ports size                    | M5   |

| FUNCTION |                        |
|----------|------------------------|
| Ⓕ        | 31 = Closed centres    |
|          | 32 = Open centres      |
|          | 33 = Pressured centres |



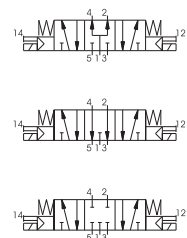
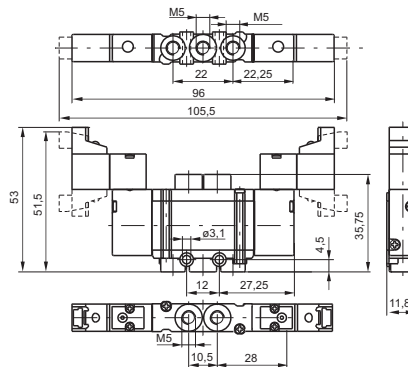
Weight 32 g  
Minimum piloting pressure 2,5 bar

**Solenoid - Solenoid**

Coding: 2115.53.Ⓕ.35.Ⓘ

| Operational characteristics           |  |
|---------------------------------------|--|
| Fluid                                 | Filtered air. No lubrication needed, if applied it shall be continuous |
| Max working pressure (bar)            | 7  |
| Temperature °C                        | -5 ÷ +50   |
| Flow rate at 6 bar with Δp=1 (NI/min) | 180 (Pressured centres)<br>130 (Closed centres)<br>140 (Open centres)  |
| Orifice size (mm)                     | 2.5  |
| Working ports size                    | M5   |

| FUNCTION |  |
|----------|--|
| Ⓕ        | 31 = Closed centres                      |
|          | 32 = Open centres                        |
|          | 33 = Pressured centres                   |
| VOLTAGE  |  |
| Ⓘ        | 01 = 12 VDC 90° conn. with led           |
|          | 21 = 12 VDC line conn. with led          |
|          | 02 = 24 VDC 90° conn. with led           |
|          | 22 = 24 VDC line conn. with led          |
|          | 11 = 12 VDC 90° conn. with led downward  |
|          | 31 = 12 VDC line conn. with led downward |
|          | 12 = 24 VDC 90° conn. with led downward  |
|          | 32 = 24 VDC line conn. with led downward |



Weight 54 g  
Minimum piloting pressure 2,5 bar

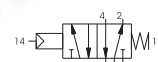
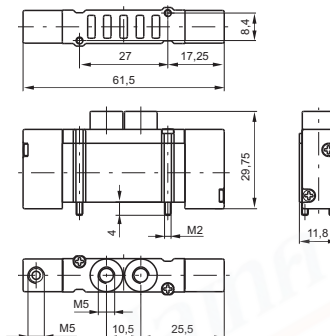
**Pneumatic - Spring**

Coding: 2135.52.00.19

| Operational characteristics                   |  |
|---|--|
| Fluid   | Filtered air. No lubrication needed, if applied it shall be continuous |
| Max working pressure (bar)                    | 7  |
| Temperature °C                                | -5 ÷ +50   |
| Flow rate at 6 bar with $\Delta p=1$ (NI/min) | 150  |
| Orifice size (mm)                             | 2.5  |
| Working ports size                            | M5   |



Weight 32 g  
Minimum piloting pressure 2 bar



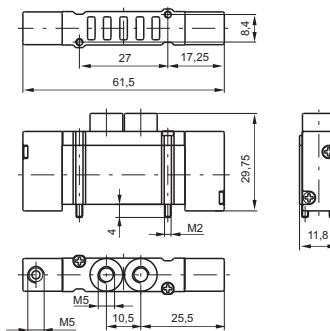
**Pneumatic - Differential**

Coding: 2135.52.00.16

| Operational characteristics                   |  |
|---|--|
| Fluid   | Filtered air. No lubrication needed, if applied it shall be continuous |
| Max working pressure (bar)                    | 7  |
| Temperature °C                                | -5 ÷ +50   |
| Flow rate at 6 bar with $\Delta p=1$ (NI/min) | 150  |
| Orifice size (mm)                             | 2.5  |
| Working ports size                            | M5   |



Weight 30 g  
Minimum piloting pressure 2 bar



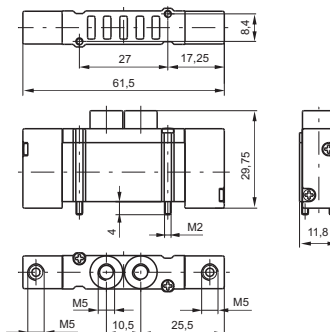
**Pneumatic - Pneumatic**

Coding: 2135.52.00.18

| Operational characteristics                   |  |
|---|--|
| Fluid   | Filtered air. No lubrication needed, if applied it shall be continuous |
| Max working pressure (bar)                    | 7  |
| Temperature °C                                | -5 ÷ +50   |
| Flow rate at 6 bar with $\Delta p=1$ (NI/min) | 150  |
| Orifice size (mm)                             | 2.5  |
| Working ports size                            | M5   |



Weight 32 g  
Minimum piloting pressure 2 bar



1  
AIR DISTRIBUTION



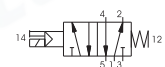
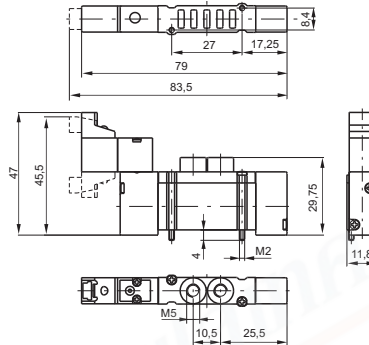
# Spool valves and solenoid valves Series 2100 - Size 10mm FLAT

## Solenoid - Spring

Coding: 2135.52.00.39.①

| Operational characteristics           |  |
|---------------------------------------|--|
| Fluid                                 | Filtered air. No lubrication needed, if applied it shall be continuous |
| Max working pressure (bar)            | 7  |
| Temperature °C                        | -5 ÷ +50   |
| Flow rate at 6 bar with Δp=1 (NI/min) | 150  |
| Orifice size (mm)                     | 2.5  |
| Working ports size                    | M5   |

| VOLTAGE |   |
|---------|---|
| 01      | = 12 VDC 90° conn. with led                           |
| 21      | = 12 VDC line conn. with led                          |
| 02      | = 24 VDC 90° conn. with led                           |
| 22      | = 24 VDC line conn. with led                          |
| 11      | = 12 VDC 90° conn. with led downward                  |
| 31      | = 12 VDC line conn. with led downward                 |
| 12      | = 24 VDC 90° conn. with led downward                  |
| 32      | = 24 VDC line conn. with led downward                 |
| 91      | = 12 VDC for integral electrical connections downward |
| 92      | = 24 VDC for integral electrical connections downward |



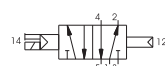
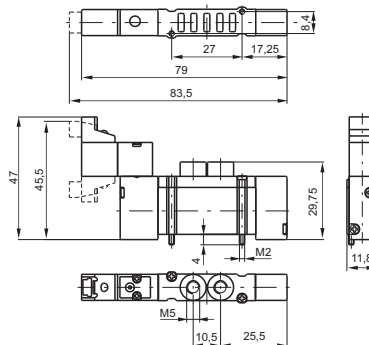
Weight 38 g  
Minimum piloting pressure 2 bar

## Solenoid - Differential

Coding: 2135.52.00.36.①

| Operational characteristics           |  |
|---------------------------------------|--|
| Fluid                                 | Filtered air. No lubrication needed, if applied it shall be continuous |
| Max working pressure (bar)            | 7  |
| Temperature °C                        | -5 ÷ +50   |
| Flow rate at 6 bar with Δp=1 (NI/min) | 150  |
| Orifice size (mm)                     | 2.5  |
| Working ports size                    | M5   |

| VOLTAGE |   |
|---------|---|
| 01      | = 12 VDC 90° conn. with led                           |
| 21      | = 12 VDC line conn. with led                          |
| 02      | = 24 VDC 90° conn. with led                           |
| 22      | = 24 VDC line conn. with led                          |
| 11      | = 12 VDC 90° conn. with led downward                  |
| 31      | = 12 VDC line conn. with led downward                 |
| 12      | = 24 VDC 90° conn. with led downward                  |
| 32      | = 24 VDC line conn. with led downward                 |
| 91      | = 12 VDC for integral electrical connections downward |
| 92      | = 24 VDC for integral electrical connections downward |



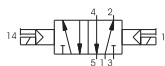
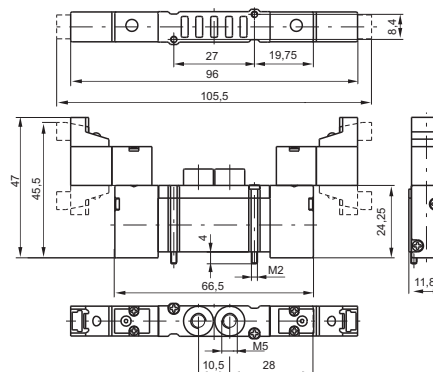
Weight 38 g  
Minimum piloting pressure 2 bar

## Solenoid - Solenoid

Coding: 2135.52.00.35.①

| Operational characteristics           |  |
|---------------------------------------|--|
| Fluid                                 | Filtered air. No lubrication needed, if applied it shall be continuous |
| Max working pressure (bar)            | 7  |
| Temperature °C                        | -5 ÷ +50   |
| Flow rate at 6 bar with Δp=1 (NI/min) | 150  |
| Orifice size (mm)                     | 2.5  |
| Working ports size                    | M5   |

| VOLTAGE |   |
|---------|---|
| 01      | = 12 VDC 90° conn. with led                           |
| 21      | = 12 VDC line conn. with led                          |
| 02      | = 24 VDC 90° conn. with led                           |
| 22      | = 24 VDC line conn. with led                          |
| 11      | = 12 VDC 90° conn. with led downward                  |
| 31      | = 12 VDC line conn. with led downward                 |
| 12      | = 24 VDC 90° conn. with led downward                  |
| 32      | = 24 VDC line conn. with led downward                 |
| 91      | = 12 VDC for integral electrical connections downward |
| 92      | = 24 VDC for integral electrical connections downward |



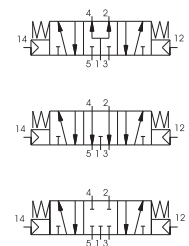
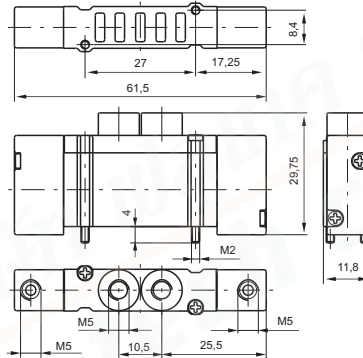
Weight 50 g  
Minimum piloting pressure 1,5 bar

**Pneumatic - Pneumatic**

Coding: 2135.53.F.18

| Operational characteristics           |  |
|---------------------------------------|--|
| Fluid                                 | Filtered air. No lubrication needed, if applied it shall be continuous |
| Max working pressure (bar)            | 7  |
| Temperature °C                        | -5 ÷ +50   |
| Flow rate at 6 bar with Δp=1 (NI/min) | 180 (Pressured centres)<br>130 (Closed centres)<br>140 (Open centres)  |
| Orifice size (mm)                     | 2.5  |
| Working ports size                    | M5   |

| FUNCTION |                        |
|----------|------------------------|
| F        | 31 = Closed centres    |
|          | 32 = Open centres      |
|          | 33 = Pressured centres |



Weight 28 g  
Minimum piloting pressure 2 bar

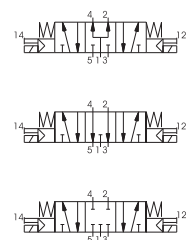
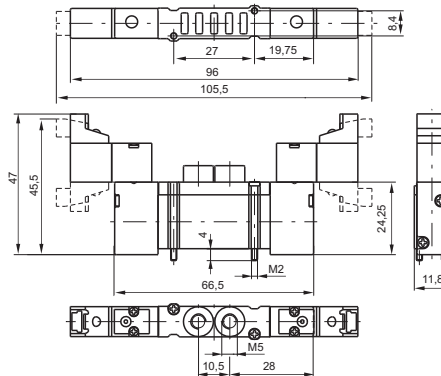
1  
AIR DISTRIBUTION

**Solenoid - Solenoid**

Coding: 2135.53.F.35.T

| Operational characteristics           |  |
|---------------------------------------|--|
| Fluid                                 | Filtered air. No lubrication needed, if applied it shall be continuous |
| Max working pressure (bar)            | 7  |
| Temperature °C                        | -5 ÷ +50   |
| Flow rate at 6 bar with Δp=1 (NI/min) | 180 (Pressured centres)<br>130 (Closed centres)<br>140 (Open centres)  |
| Orifice size (mm)                     | 2.5  |
| Working ports size                    | M5   |

| FUNCTION |  |
|----------|--|
| F        | 31 = Closed centres                                      |
|          | 32 = Open centres  |
|          | 33 = Pressured centres                                   |
| VOLTAGE  |  |
| 01       | = 12 VDC 90° conn. with led                              |
| 21       | = 12 VDC line conn. with led                             |
| 02       | = 24 VDC 90° conn. with led                              |
| 22       | = 24 VDC line conn. with led                             |
| 11       | = 12 VDC 90° conn. with led downward                     |
| 31       | = 12 VDC line conn. with led downward                    |
| T        | 12 = 24 VDC 90° conn. with led downward                  |
|          | 32 = 24 VDC line conn. with led downward                 |
|          | 91 = 12 VDC for integral electrical connections downward |
|          | 92 = 24 VDC for integral electrical connections downward |



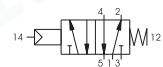
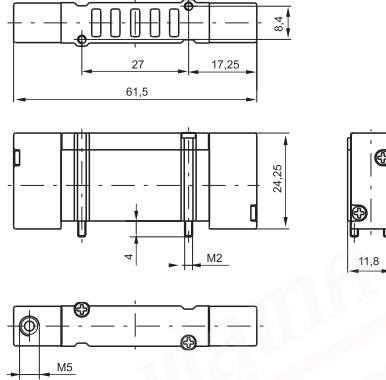
Weight 52 g  
Minimum piloting pressure 2.5 bar



**Pneumatic - Spring**

Coding: 2141.52.00.19

| Operational characteristics           |  |
|---------------------------------------|--|
| Fluid                                 | Filtered air. No lubrication needed, if applied it shall be continuous |
| Max working pressure (bar)            | 7  |
| Temperature °C                        | -5 ÷ +50   |
| Flow rate at 6 bar with Δp=1 (NI/min) | 150  |
| Orifice size (mm)                     | 2.5  |
| Working ports size                    | M5   |

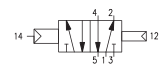
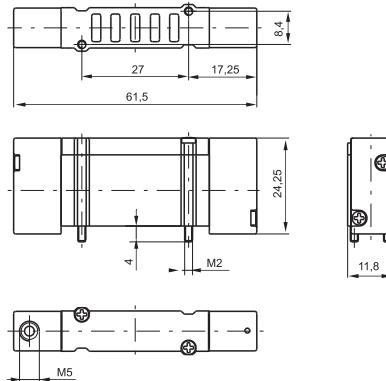


Weight 24 g  
Minimum piloting pressure 2 bar

**Pneumatic - Differential**

Coding: 2141.52.00.16

| Operational characteristics           |  |
|---------------------------------------|--|
| Fluid                                 | Filtered air. No lubrication needed, if applied it shall be continuous |
| Max working pressure (bar)            | 7  |
| Temperature °C                        | -5 ÷ +50   |
| Flow rate at 6 bar with Δp=1 (NI/min) | 150  |
| Orifice size (mm)                     | 2.5  |
| Working ports size                    | M5   |

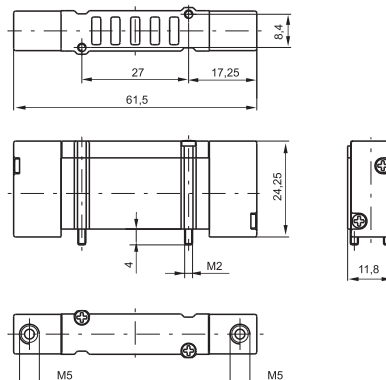


Weight 22 g  
Minimum piloting pressure 2 bar

**Pneumatic - Pneumatic**

Coding: 2141.52.00.18

| Operational characteristics           |  |
|---------------------------------------|--|
| Fluid                                 | Filtered air. No lubrication needed, if applied it shall be continuous |
| Max working pressure (bar)            | 7  |
| Temperature °C                        | -5 ÷ +50   |
| Flow rate at 6 bar with Δp=1 (NI/min) | 150  |
| Orifice size (mm)                     | 2.5  |
| Working ports size                    | M5   |



Weight 26 g  
Minimum piloting pressure 1,5 bar

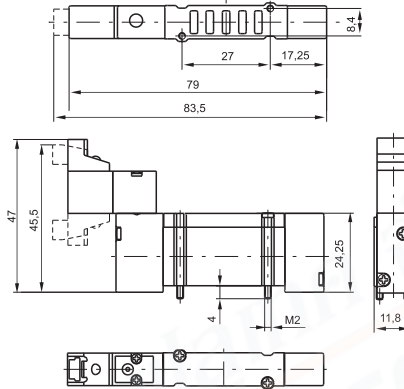
**Solenoid - Spring**

Coding: 2141.52.00.39. **T**

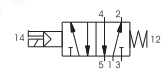
| Operational characteristics           |  |
|---------------------------------------|--|
| Fluid                                 | Filtered air. No lubrication needed, if applied it shall be continuous |
| Max working pressure (bar)            | 7  |
| Temperature °C                        | -5 ÷ +50   |
| Flow rate at 6 bar with Δp=1 (NI/min) | 150  |
| Orifice size (mm)                     | 2.5  |
| Working ports size                    | M5   |



Weight 38 g  
Minimum piloting pressure 2 bar



| VOLTAGE   |   |
|-----------|---|
| <b>01</b> | 12 VDC 90° conn. with led                           |
| <b>21</b> | 12 VDC line conn. with led                          |
| <b>02</b> | 24 VDC 90° conn. with led                           |
| <b>22</b> | 24 VDC line conn. with led                          |
| <b>11</b> | 12 VDC 90° conn. with led downward                  |
| <b>31</b> | 12 VDC line conn. with led downward                 |
| <b>12</b> | 24 VDC 90° conn. with led downward                  |
| <b>32</b> | 24 VDC line conn. with led downward                 |
| <b>91</b> | 12 VDC for integral electrical connections downward |
| <b>92</b> | 24 VDC for integral electrical connections downward |



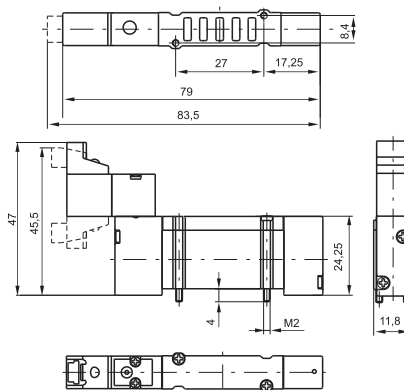
**Solenoid - Differential**

Coding: 2141.52.00.36. **T**

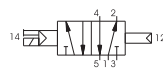
| Operational characteristics           |  |
|---------------------------------------|--|
| Fluid                                 | Filtered air. No lubrication needed, if applied it shall be continuous |
| Max working pressure (bar)            | 7  |
| Temperature °C                        | -5 ÷ +50   |
| Flow rate at 6 bar with Δp=1 (NI/min) | 150  |
| Orifice size (mm)                     | 2.5  |
| Working ports size                    | M5   |



Weight 38 g  
Minimum piloting pressure 2 bar



| VOLTAGE   |   |
|-----------|---|
| <b>01</b> | 12 VDC 90° conn. with led                           |
| <b>21</b> | 12 VDC line conn. with led                          |
| <b>02</b> | 24 VDC 90° conn. with led                           |
| <b>22</b> | 24 VDC line conn. with led                          |
| <b>11</b> | 12 VDC 90° conn. with led downward                  |
| <b>31</b> | 12 VDC line conn. with led downward                 |
| <b>12</b> | 24 VDC 90° conn. with led downward                  |
| <b>32</b> | 24 VDC line conn. with led downward                 |
| <b>91</b> | 12 VDC for integral electrical connections downward |
| <b>92</b> | 24 VDC for integral electrical connections downward |



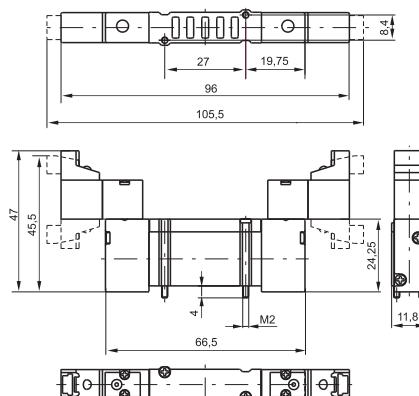
**Solenoid - Solenoid**

Coding: 2141.52.00.35. **T**

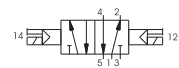
| Operational characteristics           |  |
|---------------------------------------|--|
| Fluid                                 | Filtered air. No lubrication needed, if applied it shall be continuous |
| Max working pressure (bar)            | 7  |
| Temperature °C                        | -5 ÷ +50   |
| Flow rate at 6 bar with Δp=1 (NI/min) | 150  |
| Orifice size (mm)                     | 2.5  |
| Working ports size                    | M5   |



Weight 48 g  
Minimum piloting pressure 1,5 bar



| VOLTAGE   |   |
|-----------|---|
| <b>01</b> | 12 VDC 90° conn. with led                           |
| <b>21</b> | 12 VDC line conn. with led                          |
| <b>02</b> | 24 VDC 90° conn. with led                           |
| <b>22</b> | 24 VDC line conn. with led                          |
| <b>11</b> | 12 VDC 90° conn. with led downward                  |
| <b>31</b> | 12 VDC line conn. with led downward                 |
| <b>12</b> | 24 VDC 90° conn. with led downward                  |
| <b>32</b> | 24 VDC line conn. with led downward                 |
| <b>91</b> | 12 VDC for integral electrical connections downward |
| <b>92</b> | 24 VDC for integral electrical connections downward |



1  
AIR DISTRIBUTION



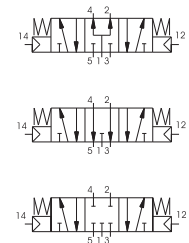
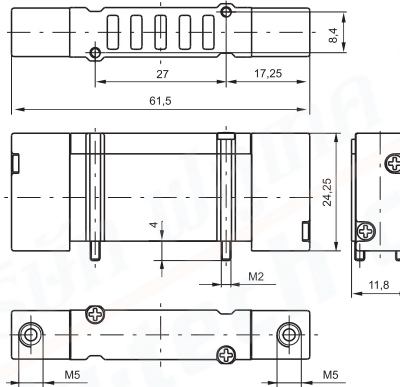
# Spool valves and solenoid valves Series 2100 - Size 10mm BASE

## Pneumatic - Pneumatic

Coding: 2141.53.F.18

| Operational characteristics           |  |
|---------------------------------------|--|
| Fluid                                 | Filtered air. No lubrication needed, if applied it shall be continuous |
| Max working pressure (bar)            | 7  |
| Temperature °C                        | -5 ÷ +50   |
| Flow rate at 6 bar with Δp=1 (NI/min) | 180 (Pressured centres)<br>130 (Closed centres)<br>140 (Open centres)  |
| Orifice size (mm)                     | 2.5  |
| Working ports size                    | M5   |

| FUNCTION |                        |
|----------|------------------------|
| F        | 31 = Closed centres    |
|          | 32 = Open centres      |
|          | 33 = Pressured centres |



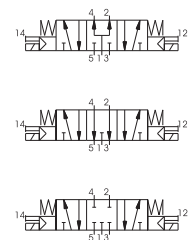
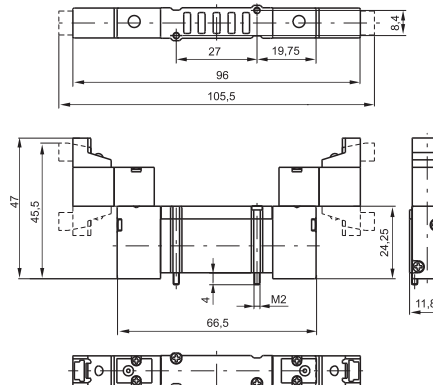
Weight 28 g  
Minimum working pressure 2 bar

## Solenoid - Solenoid

Coding: 2141.53.F.35.T

| Operational characteristics           |  |
|---------------------------------------|--|
| Fluid                                 | Filtered air. No lubrication needed, if applied it shall be continuous |
| Max working pressure (bar)            | 7  |
| Temperature °C                        | -5 ÷ +50   |
| Flow rate at 6 bar with Δp=1 (NI/min) | 180 (Pressured centres)<br>130 (Closed centres)<br>140 (Open centres)  |
| Orifice size (mm)                     | 2.5  |
| Working ports size                    | M5   |

| FUNCTION |  |
|----------|--|
| F        | 31 = Closed centres                                      |
|          | 32 = Open centres  |
|          | 33 = Pressured centres                                   |
| VOLTAGE  |  |
|          | 01 = 12 VDC 90° conn. with led                           |
|          | 21 = 12 VDC line conn. with led                          |
|          | 02 = 24 VDC 90° conn. with led                           |
|          | 22 = 24 VDC line conn. with led                          |
|          | 11 = 12 VDC 90° conn. with led downward                  |
|          | 31 = 12 VDC line conn. with led downward                 |
| T        | 12 = 24 VDC 90° conn. with led downward                  |
|          | 32 = 24 VDC line conn. with led downward                 |
|          | 91 = 12 VDC for integral electrical connections downward |
|          | 92 = 24 VDC for integral electrical connections downward |

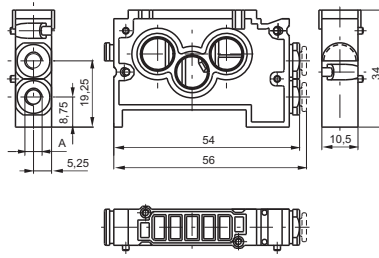


Weight 52 g  
Minimum piloting pressure 2,5 bar

► Modular base for "BASE" version



Weight 22 g



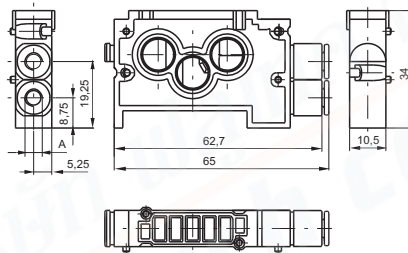
Coding: 214<sup>✓</sup>.01

| VARIANTS       |   |
|----------------|---|
| 0              | = modular BASE without cartridges           |
| 4              | = modular base c/w with 4mm tube cartridges |
| <sup>✓</sup> 5 | = modular base c/w with M5 cartridges       |
| 7              | = modular base c/w with M7x1 cartridges     |

► Modular BASE c/w with 6mm tube cartridges



Weight 22 g

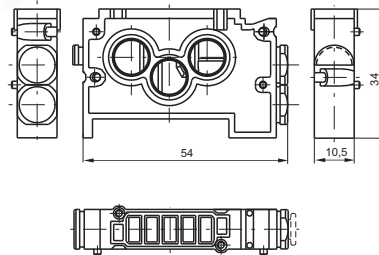


Coding: 2146.01

► Modular base for "FLAT" version



Weight 28 g



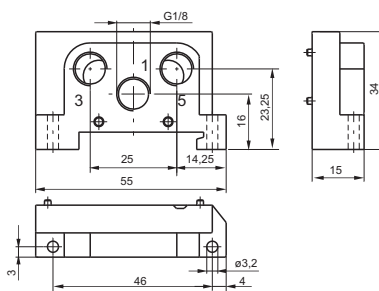
Coding: 2130.01

► Inlet base



Weight 18 g

2140.02



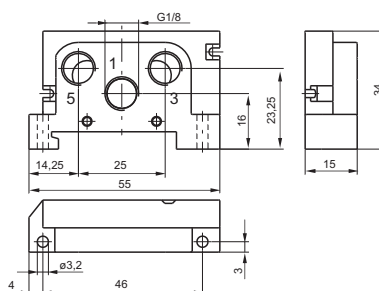
Coding: 2140.<sup>✓</sup>

| VARIANTS        |         |
|-----------------|---------|
| <sup>✓</sup> 02 | = Right |
| 03              | = Left  |



Weight 18 g

2140.03



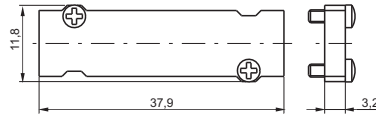


1

AIR DISTRIBUTION

▶ Closing plate

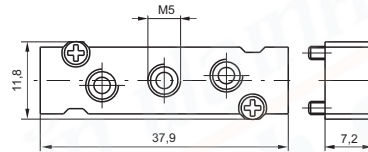
Coding: 2130.00



Weight 7 g

▶ Intermediate air intake

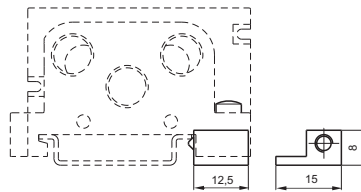
Coding: 2130.10



Weight 12 g  
to be assembled instead of a valve

▶ DIN rail adapter

Coding: 2130.16



Weight 6 g

▶ Modular base cartridge

Coding: 2100.▼



| VARIANTS |                     |
|----------|---------------------|
| 031M     | = Ø4 tube cartridge |
| 033M     | = M5 cartridges     |
| 034M     | = M7x1 cartridges   |
| 035M     | = Blank base        |
| 036M     | = Ø4 tube cartridge |

Weight 5 g

▶ Diaphragm plug

Coding: 2130.17

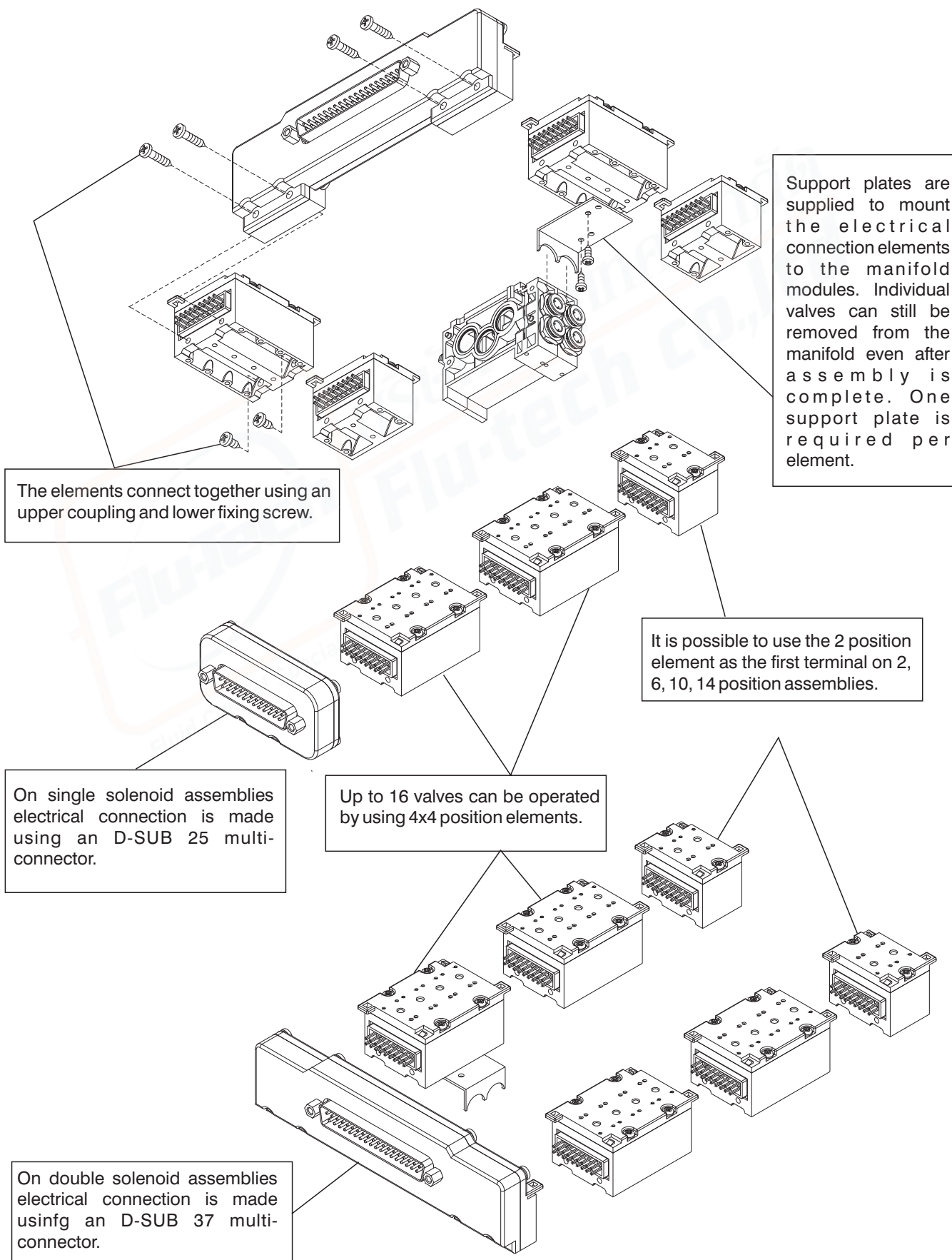


Weight 6 g



The integral electrical design for the series 2400 valve is extremely flexible, allowing the production of pre-wired solenoid valve manifolds, the configuration of which can be determined at the point of assembly. The 24 VDC, 12 VDC (equivalent PNP) modules are available with 2 or 4 positions. The system assembled is designed for an IP40 - IP65 protection.

Coil type 91 or 92 is required for the multipin electrical connection (see valve ordering codes).





1  
AIR DISTRIBUTION

▶ **Module for connections**



Weight 35 g

2100.02.**T**



Weight 20 g

2100.04.**T**

Coding: 2100.**P.T**

|          |   |
|----------|---|
| <b>P</b> | POSITIONS                                 |
|          | 04 = 4 positions                          |
|          | 02 = 2 positions                          |
| <b>T</b> | TYPE                                      |
|          | 00 = Left IP40-PNP                        |
|          | 02 = Left IP40-PNP with protection diode  |
|          | 10 = Left IP65-PNP                        |
|          | 12 = Left IP65-PNP with protection diode  |
|          | 01 = Right IP40-PNP                       |
|          | 03 = Right IP40-PNP with protection diode |
|          | 11 = Right IP65-PNP                       |
|          | 13 = Right IP65-PNP with protection diode |

▶ **Front connector**



Weight 120 g

The IP65 protection is obtained by IP65 Pneumax cable

2100.37.10



Weight 40 g

The IP65 protection is obtained by IP65 Pneumax cable

2100.25.10

Coding: 2100.**P.10**

|          |               |
|----------|---------------|
| <b>P</b> | POLES         |
|          | 37 = 37 poles |
|          | 25 = 25 poles |

▶ **Plug**



Weight 4 g

Coding: 2100.00

▶ **FLAT support plate**



Weight 5 g

Coding: 2130.50



▶ In line cable complete with connector IP40



Coding: 2400.**T**.**L**.00

|          |  |
|----------|--|
|          | CONNECTORS                                       |
| <b>T</b> | 25 = 25 poles<br>37 = 37 poles                   |
|          | CABLE LENGTH                                     |
| <b>L</b> | 03 = 3 meters<br>05 = 5 meters<br>10 = 10 meters |

▶ Cable complete with connector, 25 Poles IP65



Coding: 2300.25.**L**.**C**

|          |  |
|----------|--|
|          | CABLE LENGTH                                     |
| <b>L</b> | 03 = 3 meters<br>05 = 5 meters<br>10 = 10 meters |
|          | CONNECTOR  |
| <b>C</b> | 10 = In line<br>90 = 90° Angle                   |

▶ Cable complete with connector, 37 Poles IP65

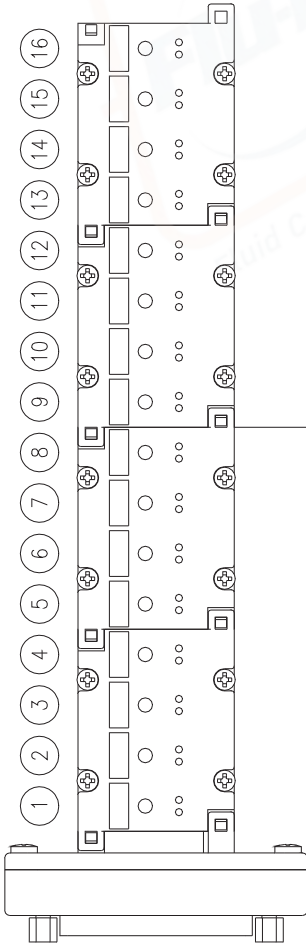
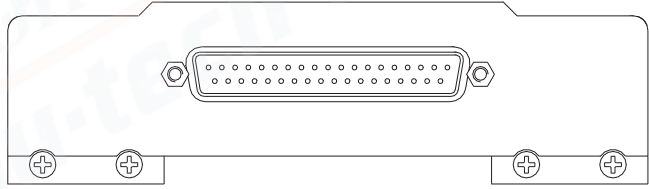
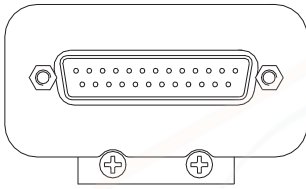
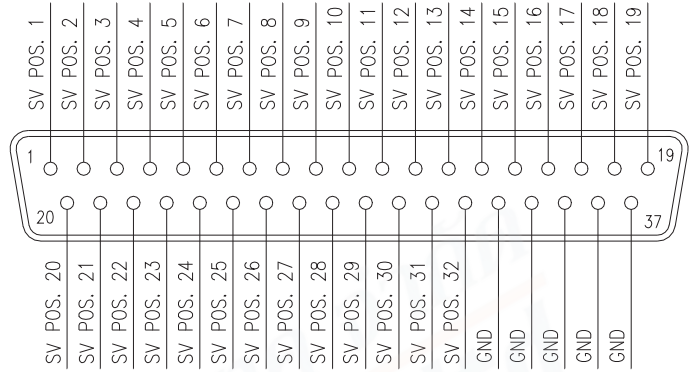
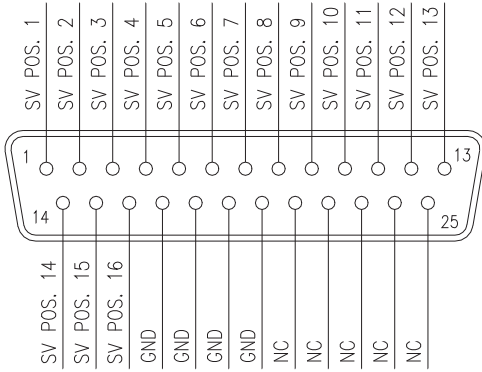


Coding: 2400.37.**L**.**C**

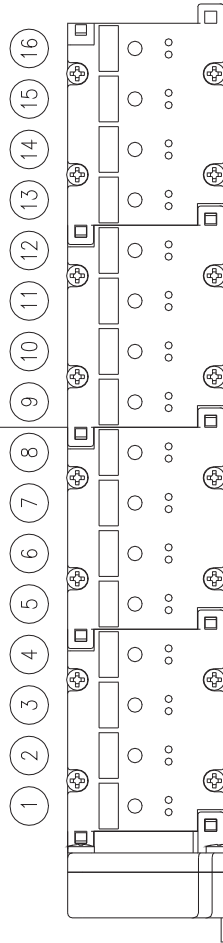
|          |  |
|----------|--|
|          | CABLE LENGTH                                     |
| <b>L</b> | 03 = 3 meters<br>05 = 5 meters<br>10 = 10 meters |
|          | CONNECTOR  |
| <b>C</b> | 10 = In line<br>90 = 90° Angle                   |

**SUB-D 25 CONTACTS CONNECTOR**

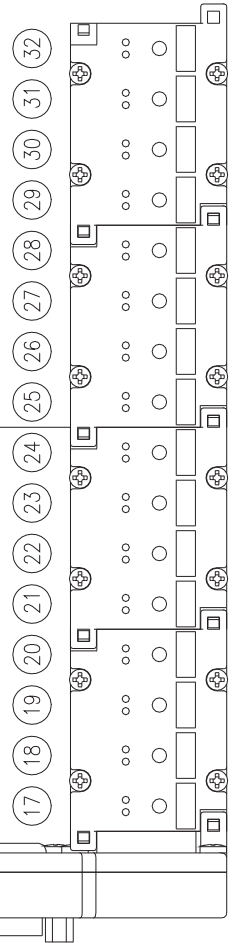
**SUB-D 37 CONTACTS CONNECTOR**



Left modules



Right modules



AIR DISTRIBUTION

1