

Multistage vacuum generators

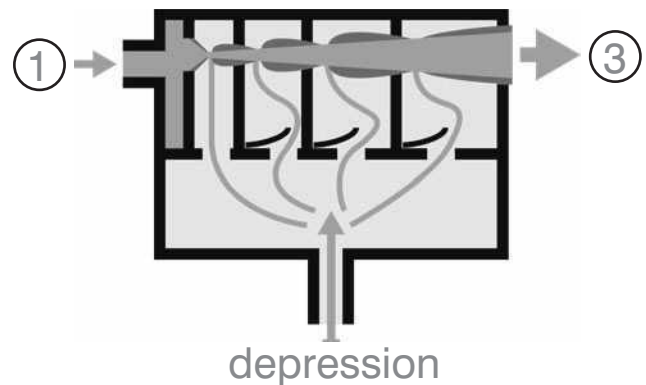
Compact generators, composed of several modules according to the required performance to obtain high suction capacity with low consumption and high vacuum degrees.



Performance and application

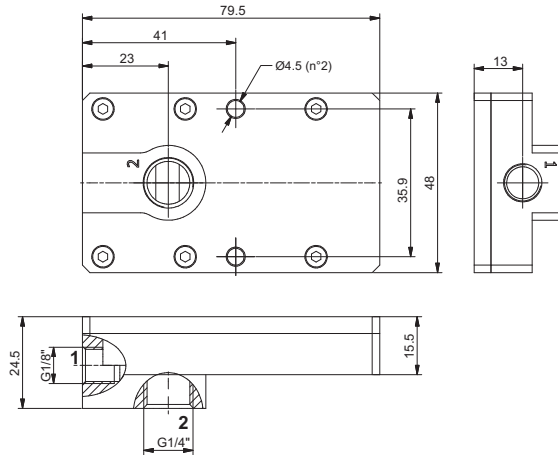
The multistage vacuum generators base their operating characteristics on the Venturi principle. The compressed air is manipulated to flow at high speed in port 1 which constitutes the first stage of the vacuum generator and in the subsequent stages, following the entrainment of the surrounding air, a depression is created.

The advantage of multistage vacuum generator is in the optimization of the kinetic energy. Injecting the compressed air through multiple nozzles generates an improve volumetric flow rate (Compared to a single stage unit) whilst using a lower consumption of compressed air.



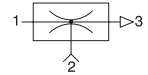
Series 1900

Multistage vacuum generator G1/4"



Ordering code

19M14.M.09.SS.00

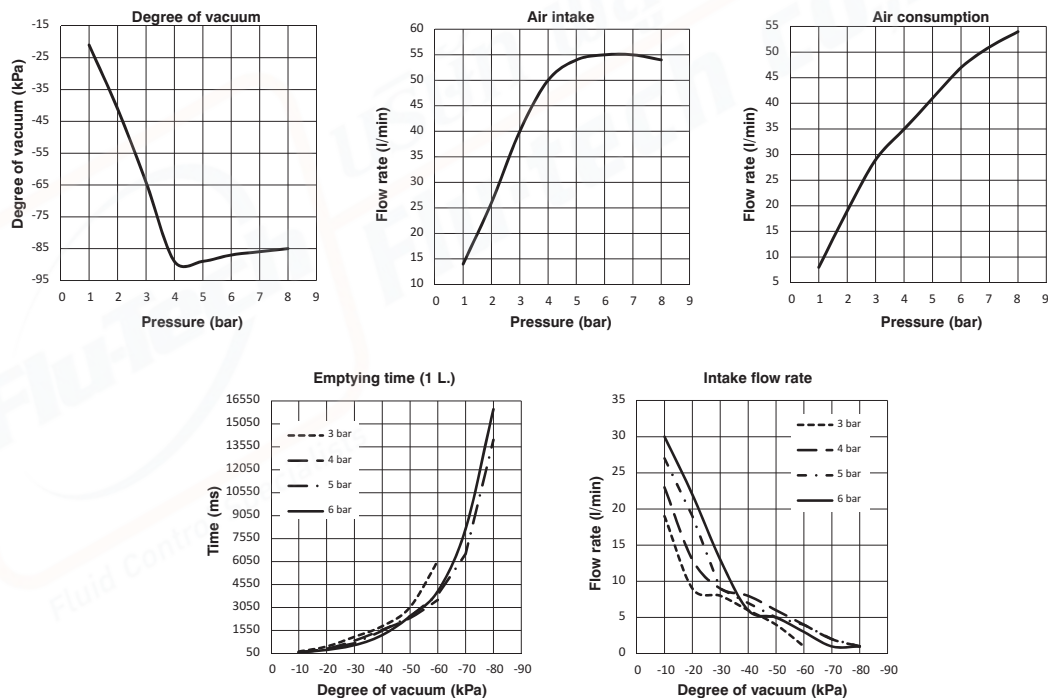


As a function of the modules (nozzles 2-4- 6-8) used, offer exactly the right performance for the most varied of industrial applications. They ensure a low level of noise thanks to the sound-absorbent material inside of them.

Operational characteristics

- Inlet pressure (bar)	2	4	6
- Degree of Vacuum (-kPa)	41	89	87
- Intake flow rate (l/min)	26	50	55
- Air consumption (l/min)	19	35	47

Performance Charts



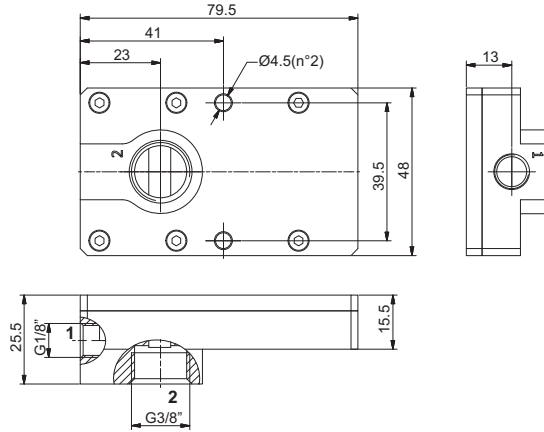
Technical characteristics

Fluid	Unlubricated filtered air
Pressure (bar)	1 ... 8
Temperature (°C)	-10 ... +80
Weight (gr.)	132

VACUUM GENERATORS



► Multistage vacuum generator G3/8"

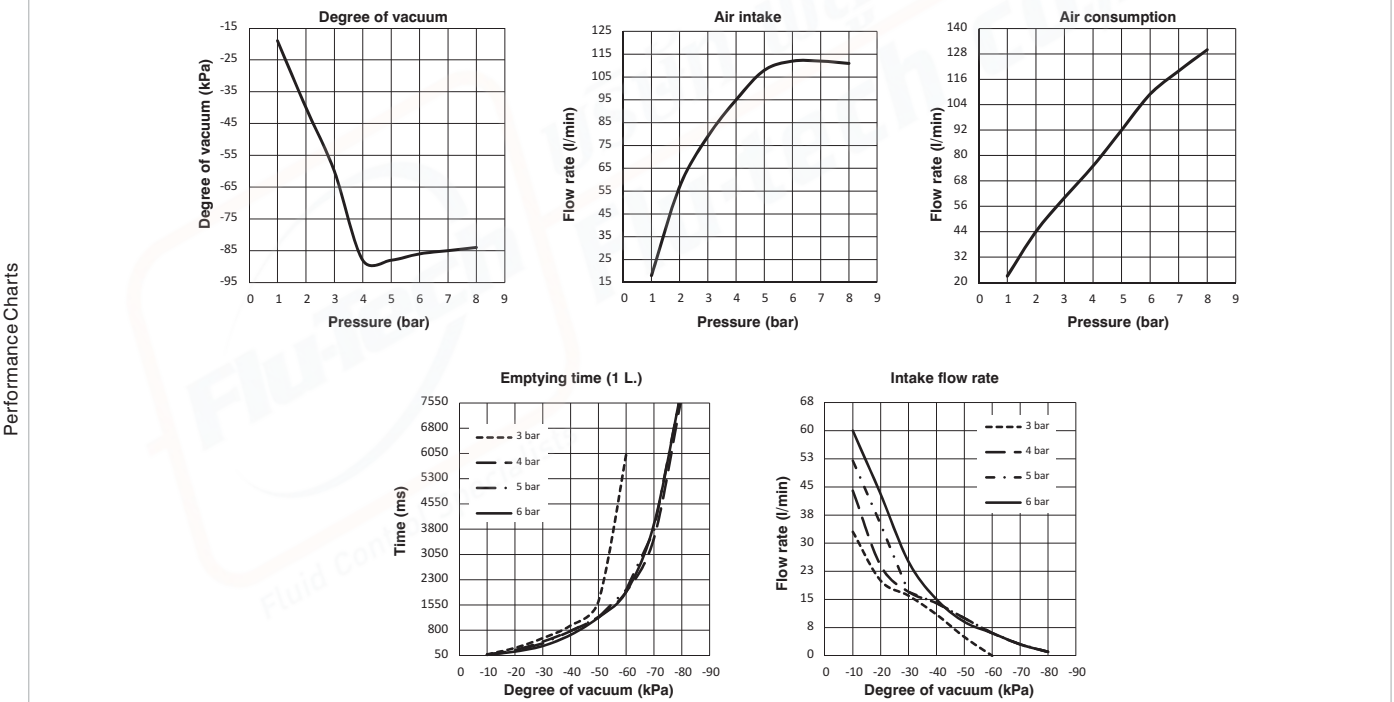


Ordering code
19M38.M.12.SS.00

As a function of the modules (nozzles 2-4- 6-8) used, offer exactly the right performance for the most varied of industrial applications. They ensure a low level of noise thanks to the sound-absorbent material inside of them.

Operational characteristics

- Inlet pressure (bar)	2	4	6
- Degree of Vacuum (-kPa)	40	88	86
- Intake flow rate (l/min)	57	95	112
- Air consumption (l/min)	44	75	109



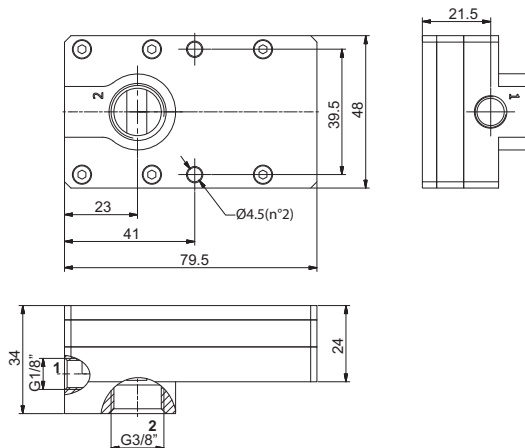
Technical characteristics

Fluid	Unlubricated filtered air
Pressure (bar)	1 ... 8
Temperature (°C)	-10 ... +80
Weight (gr.)	132

VACUUM GENERATORS

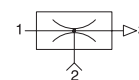


► Multistage vacuum generator G3/8"



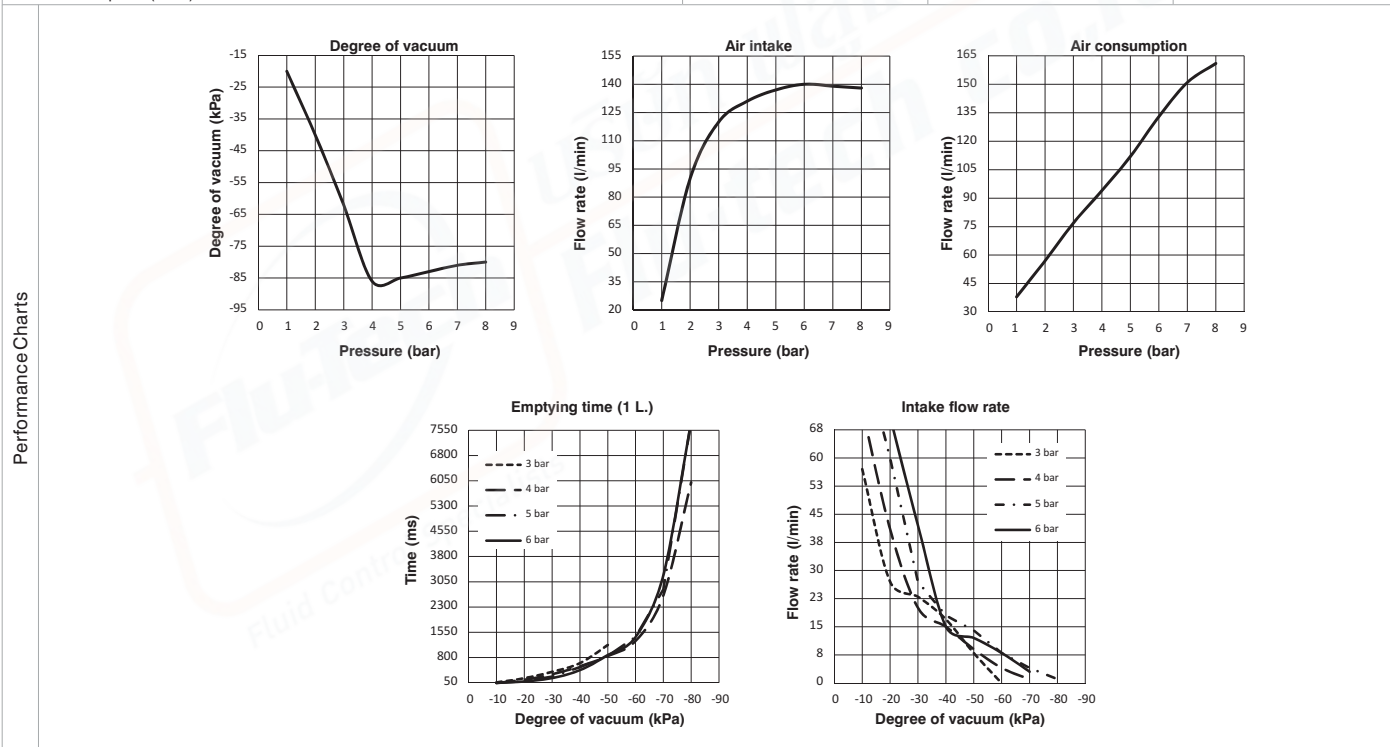
Ordering code

19M38.M.15.SS.00



As a function of the modules (nozzles 2-4- 6-8) used, offer exactly the right performance for the most varied of industrial applications. They ensure a low level of noise thanks to the sound-absorbent material inside of them.

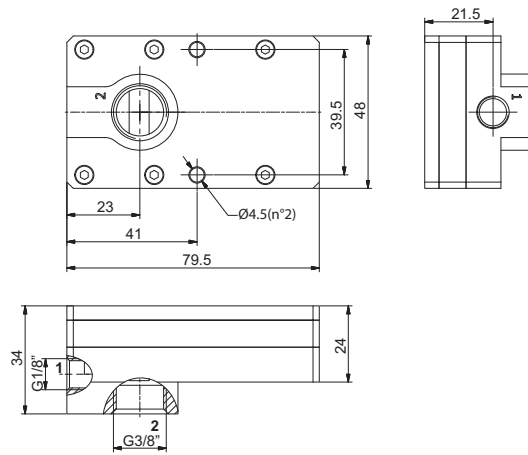
Operational characteristics	2	4	6
- Inlet pressure (bar)	2	4	6
- Degree of Vacuum (-kPa)	40	86	83
- Intake flow rate (l/min)	90	131	140
- Air consumption (l/min)	57	94	133



Technical characteristics	
Fluid	Unlubricated filtered air
Pressure (bar)	1 ... 8
Temperature (°C)	-10 ... +80
Weight (gr.)	178

VACUUM GENERATORS

Multistage vacuum generator G3/8"

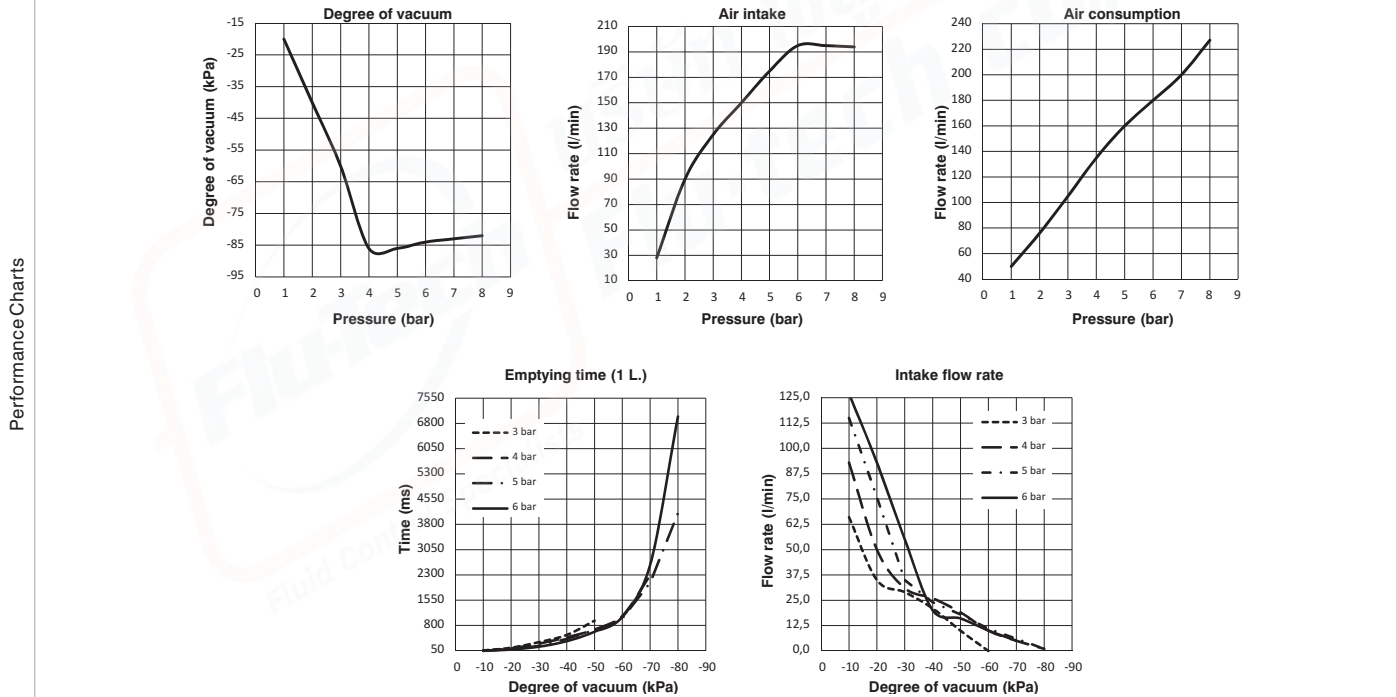


Ordering code
19M38.M.18.SS.00

As a function of the modules (nozzles 2-4-6-8) used, offer exactly the right performance for the most varied of industrial applications. They ensure a low level of noise thanks to the sound-absorbent material inside of them.

Operational characteristics

- Inlet pressure (bar)	2	4	6
- Degree of Vacuum (-kPa)	40	86	84
- Intake flow rate (l/min)	90	150	195
- Air consumption (l/min)	76	135	180



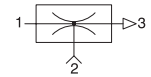
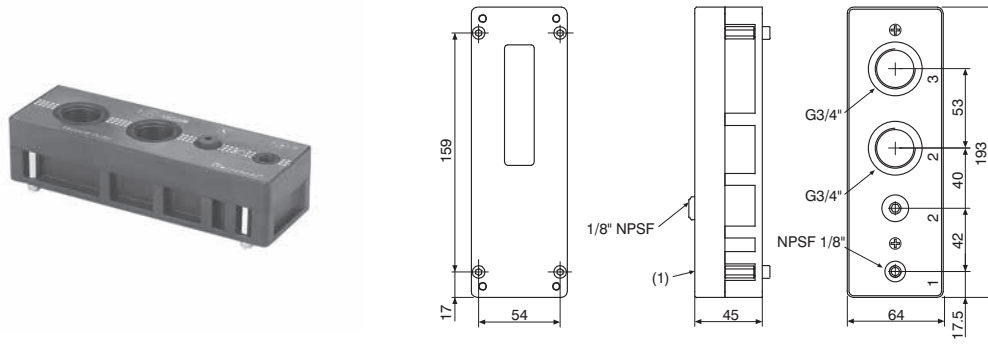
Technical characteristics

Fluid	Unlubricated filtered air
Pressure (bar)	1 ... 8
Temperature (°C)	-10 ... +80
Weight (gr.)	178



Multistage high flow vacuum generator G3/4"

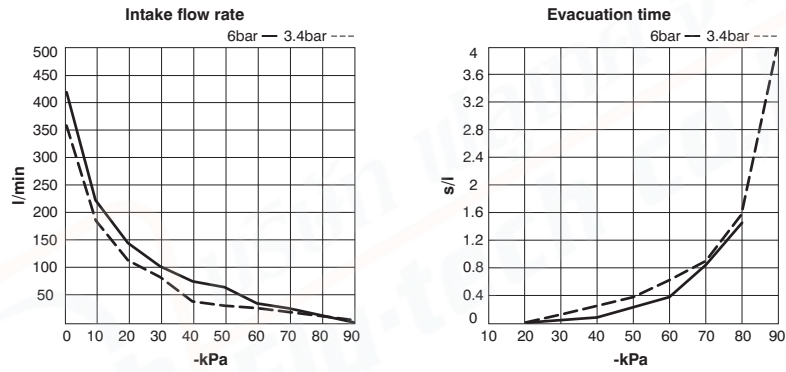
Ordering code
19T34.M.32.HF.QQ



Operational characteristics

- Optimum inlet pressure (bar)	3.4
- Inlet pressure (bar)	3.4 / 6
- Degree of Vacuum (-kPa)	89 / 92
- Intake flow rate (l/min)	360 / 420
- Air consumption (l/min)	116 / 185

Performance Charts



Inlet pressure (bar)	Air consumption (l/min)	Evacuation time (s/l) at different levels of vacuum (-kPa)											Degree of Vacuum max. (-kPa)
		0	10	20	30	40	50	60	70	80	90		
3.4	116	360	180	115	80	43	30	22.5	15.5	7.5	1.2	92	
6	185	420	240	125	100	82	65	38	12.5	3.5	/	89	

Inlet pressure (bar)	Air consumption (l/min)	Evacuation time (s/l) at different levels of vacuum (-kPa)										Degree of Vacuum max. (-kPa)
		10	20	30	40	50	60	70	80	90		
3.4	116	0.022	0.06	0.11	0.21	0.4	0.65	0.95	1.60	4	92	
6	185	0.018	0.05	0.08	0.18	0.25	0.40	0.62	1.55	/	89	

Technical characteristics

Fluid	Unlubricated filtered air
Inlet pressure (bar)	3.4 ... 6
Noise (dBA)	93
Temperature (°C)	-20 ... +80
Material	PPS, SS, PA, NBR
Weight (gr)	675

Accessories

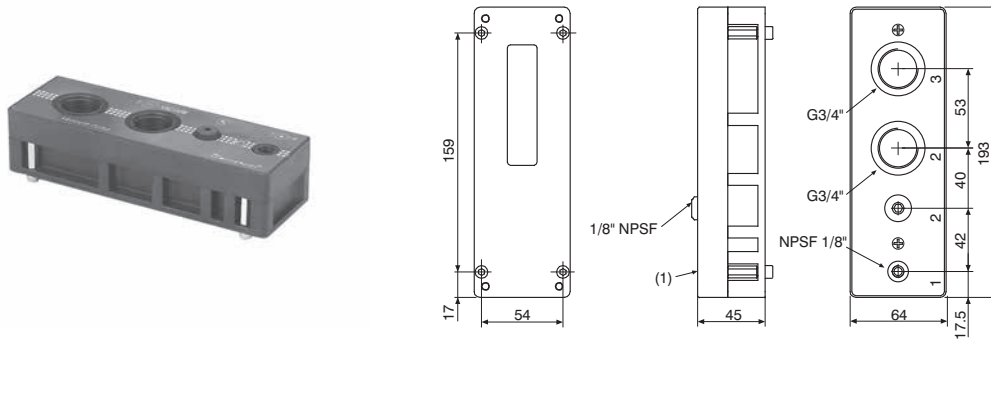
19S34.R	Reduced silencer G3/4"
19S34.S	Silencer G3/4"

VACUUM GENERATORS



Multistage high flow vacuum generator G3/4"

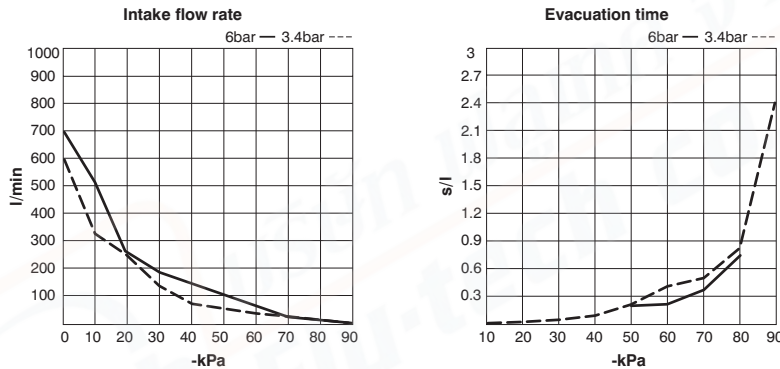
Ordering code
19T34.M.41.HF.QQ



Operational characteristics

- Optimum inlet pressure (bar)	3.4
- Inlet pressure (bar)	3.4 / 6
- Degree of Vacuum (-kPa)	89 / 92
- Intake flow rate (l/min)	600 / 700
- Air consumption (l/min)	230 / 370

Performance Charts



Inlet pressure (bar)	Air consumption (l/min)	Evacuation time (s/l) at different levels of vacuum (-kPa)										Degree of Vacuum max. (-kPa)
		0	10	20	30	40	50	60	70	80	90	
3.4	230	600	320	250	135	75	60	46	30	13	1.5	92
6	370	700	510	290	195	160	115	70	22	8	/	89

Inlet pressure (bar)	Air consumption (l/min)	Evacuation time (s/l) at different levels of vacuum (-kPa)									Degree of Vacuum max. (-kPa)
		10	20	30	40	50	60	70	80	90	
3.4	230	0.014	0.031	0.06	0.10	0.20	0.34	0.50	0.80	2.5	92
6	370	0.01	0.022	0.048	0.08	0.11	0.20	0.35	0.78	/	89

Technical characteristics

Fluid	Unlubricated filtered air
Max. inlet pressure (bar)	3,4 ... 6
Noise (dBA)	92
Temperature (°C)	-20 ... +80
Material	PPS, SS, PA, NBR
Weight (gr)	675

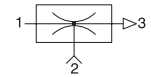
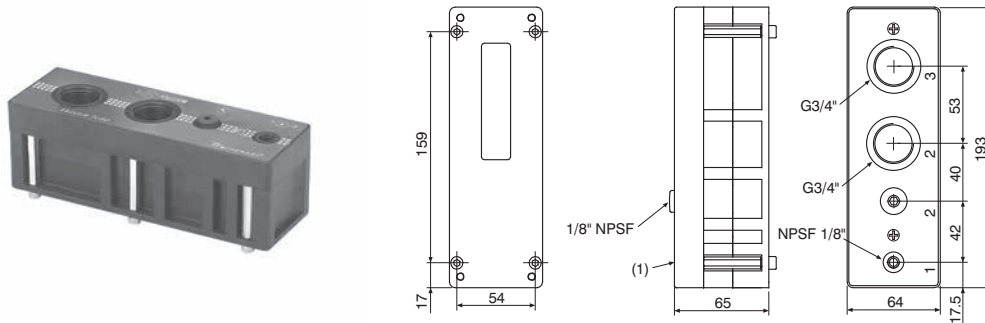
Accessories

19S34.R	Reduced silencer G3/4"
19S34.S	Silencer G3/4"



Multistage high flow vacuum generator G3/4"

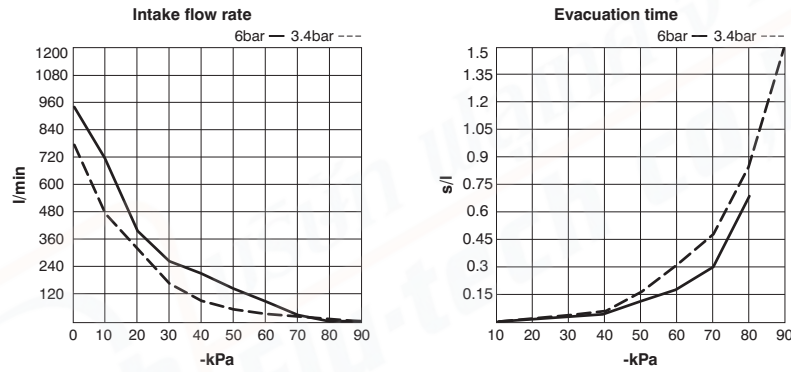
Ordering code
19T34.M.46.HF.QQ



Operational characteristics

- Optimum inlet pressure (bar)	3.4
- Inlet pressure (bar)	3.4 / 6
- Degree of Vacuum (-kPa)	89 / 92
- Intake flow rate (l/min)	760 / 950
- Air consumption (l/min)	365 / 610

Performance Charts



Inlet pressure (bar)	Air consumption (l/min)	Evacuation time (s/l) at different levels of vacuum (-kPa)										Degree of Vacuum max. (-kPa)
		0	10	20	30	40	50	60	70	80	90	
3.4	365	760	445	340	175	110	85	70	43	20	1.8	92
6	610	950	710	380	285	230	170	100	32	11	/	89

Inlet pressure (bar)	Air consumption (l/min)	Evacuation time (s/l) at different levels of vacuum (-kPa)										Degree of Vacuum max. (-kPa)
		10	20	30	40	50	60	70	80	90		
3.4	365	0.012	0.029	0.058	0.095	0.18	0.31	0.46	0.89	1.5	92	
6	610	0.009	0.019	0.045	0.075	0.13	0.18	0.31	0.70	/	89	

Technical characteristics

Fluid	Unlubricated filtered air
Max. inlet pressure (bar)	3.4 ... 6
Noise (dBA)	93
Temperature (°C)	-20 ... +80
Material	PPS, SS, PA, NBR
Weight (gr)	837

Accessories

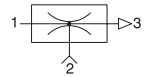
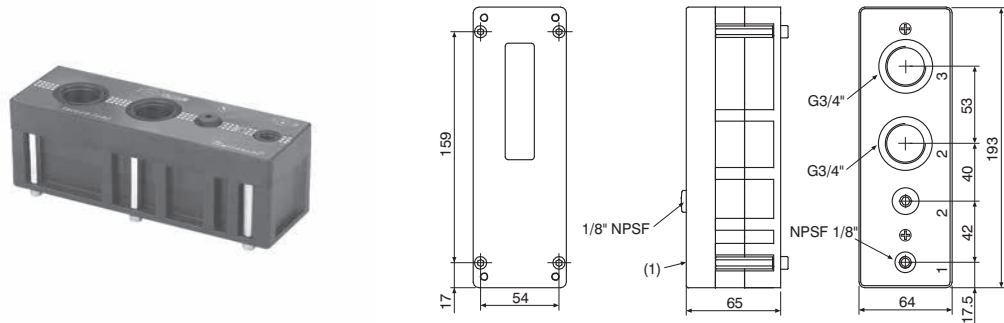
19S34.R	Reduced silencer G3/4"
19S34.S	Silencer G3/4"

VACUUM GENERATORS



Multistage high flow vacuum generator G3/4"

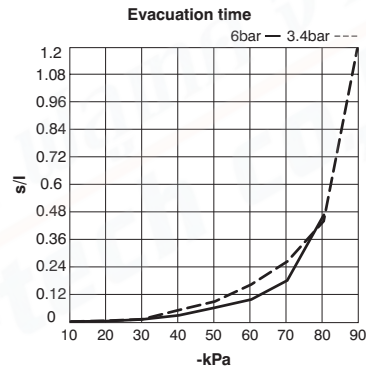
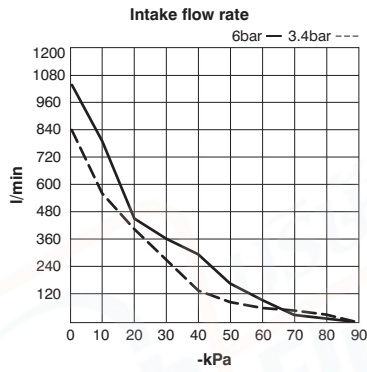
Ordering code
19T34.M.52.HF.QQ



Operational characteristics

- Optimum inlet pressure (bar)	3.4
- Inlet pressure (bar)	3.4 / 6
- Degree of Vacuum (-kPa)	89 / 92
- Intake flow rate (l/min)	850 / 1010
- Air consumption (l/min)	445 / 720

Performance Charts



Inlet pressure (bar)	Air consumption (l/min)	Evacuation time (s/l) at different levels of vacuum (-kPa)											Degree of Vacuum max. (-kPa)
		0	10	20	30	40	50	60	70	80	90		
3.4	445	850	550	430	280	145	115	85	60	28	2.2	92	
6	720	1010	800	460	385	310	215	125	42	15.5	/	89	

Inlet pressure (bar)	Air consumption (l/min)	Evacuation time (s/l) at different levels of vacuum (-kPa)										Degree of Vacuum max. (-kPa)
		10	20	30	40	50	60	70	80	90		
3.4	445	0.010	0.025	0.043	0.075	0.11	0.19	0.27	0.45	1.2	92	
6	720	0.007	0.018	0.038	0.055	0.08	0.12	0.19	0.47	/	89	

Technical characteristics

Fluid	Unlubricated filtered air
Max. inlet pressure (bar)	3,4 ... 6
Noise (dBA)	88
Temperature (°C)	-20 ... +80
Material	PPS, SS, PA, NBR
Weight (gr)	837

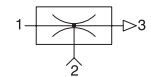
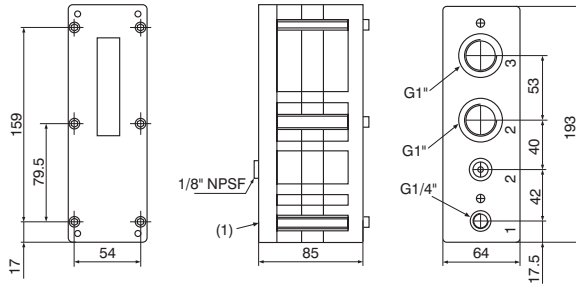
Accessories

19S34.R	Reduced silencer G3/4"
19S34.S	Silencer G3/4"



Multistage high flow vacuum generator G1"

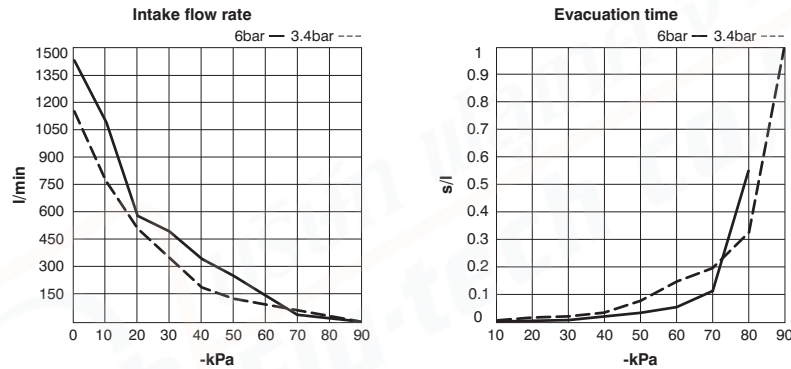
Ordering code
19TG1.M.58.HF.PP



Operational characteristics

- Optimum inlet pressure (bar)	3.4
- Inlet pressure (bar)	3.4 / 6
- Degree of Vacuum (-kPa)	89 / 92
- Intake flow rate (l/min)	1150 / 1400
- Air consumption (l/min)	545 / 780

Performance Charts



Inlet pressure (bar)	Air consumption (l/min)	Evacuation time (s/l) at different levels of vacuum (-kPa)										Degree of Vacuum max. (-kPa)
		0	10	20	30	40	50	60	70	80	90	
3.4	545	1150	760	530	350	180	148	115	78	34.5	3.5	92
6	780	1400	1120	560	490	355	260	150	50	25	/	89

Inlet pressure (bar)	Air consumption (l/min)	Evacuation time (s/l) at different levels of vacuum (-kPa)										Degree of Vacuum max. (-kPa)
		10	20	30	40	50	60	70	80	90		
3.4	545	0.006	0.015	0.029	0.052	0.085	0.145	0.202	0.330	1	92	
6	780	0.005	0.013	0.026	0.045	0.062	0.115	0.194	0.56	/	89	

Technical characteristics

Fluid	Unlubricated filtered air
Max. inlet pressure (bar)	3,4 ... 6
Noise (dBA)	92
Temperature (°C)	-20 ... +80
Material	PPS, SS, PA, NBR
Weight (gr)	1075

Accessories

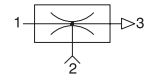
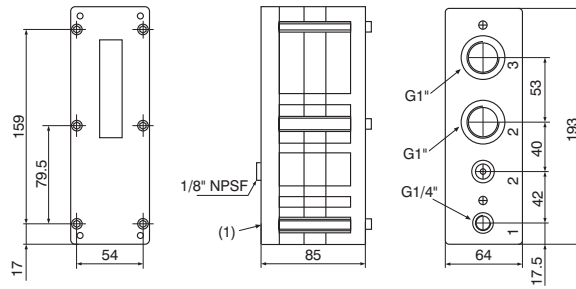
19S10.R	Reduced silencer G 1"
----------------	-----------------------

VACUUM GENERATORS



Multistage high flow vacuum generator G1"

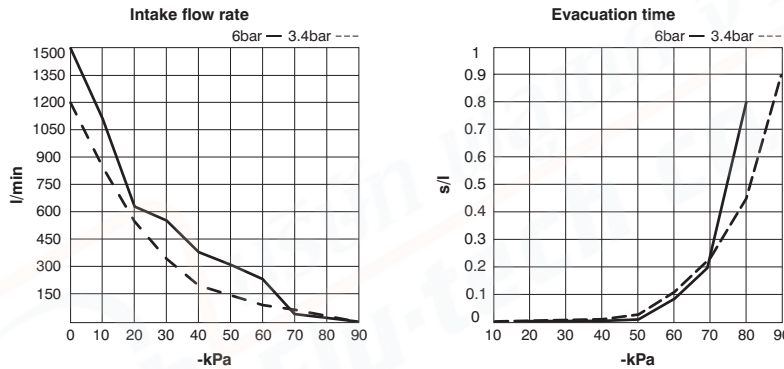
Ordering code
19TG1.M.61.HF.PP



Operational characteristics

- Optimum inlet pressure (bar)	3.4
- Inlet pressure (bar)	3.4 / 6
- Degree of Vacuum (-kPa)	89 / 92
- Intake flow rate (l/min)	1200 / 1500
- Air consumption (l/min)	655 / 810

Performance Charts



Inlet pressure (bar)	Air consumption (l/min)	Evacuation time (s/l) at different levels of vacuum (-kPa)										Degree of Vacuum max. (-kPa)
		0	10	20	30	40	50	60	70	80	90	
3.4	655	1200	830	550	360	215	170	130	90	36	5	92
6	810	1500	1110	630	560	385	315	210	65	26	/	89

Inlet pressure (bar)	Air consumption (l/min)	Evacuation time (s/l) at different levels of vacuum (-kPa)									Degree of Vacuum max. (-kPa)
		10	20	30	40	50	60	70	80	90	
3.4	655	0.005	0.013	0.027	0.045	0.070	0.105	0.23	0.46	0.9	92
6	810	0.003	0.009	0.014	0.030	0.060	0.095	0.20	0.8	/	89

Technical characteristics

Fluid	Unlubricated filtered air
Max. inlet pressure (bar)	3,4 ... 6
Noise (dBA)	88
Temperature (°C)	-20 ... +80
Material	PPS, SS, PA, NBR
Weight (gr)	1075

Accessories

19S10.R	Reduced silencer G 1"
---------	-----------------------

VACUUM GENERATORS