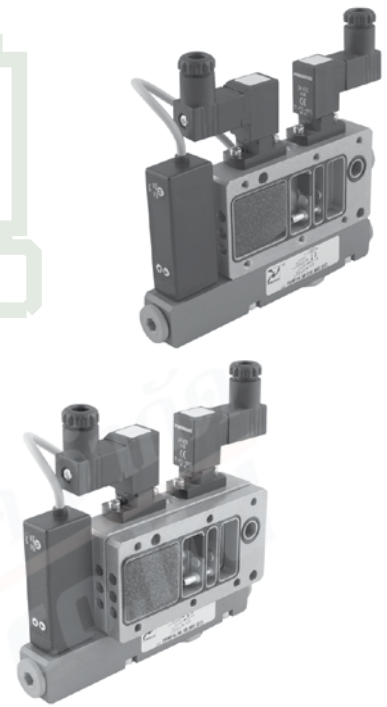


Modular multifunction vacuum generators

The intermediate “ME” multistage and multifunction vacuum generators are not autonomous and must be hooked up to the “SE” units to operate.



They have been designed to be enclosed between the cap and the base of the “SE” vacuum generator and attached to the latter via M4 screws; with the distribution manifold inside the generator, the compressed air is distributed without having to use external manifolds.

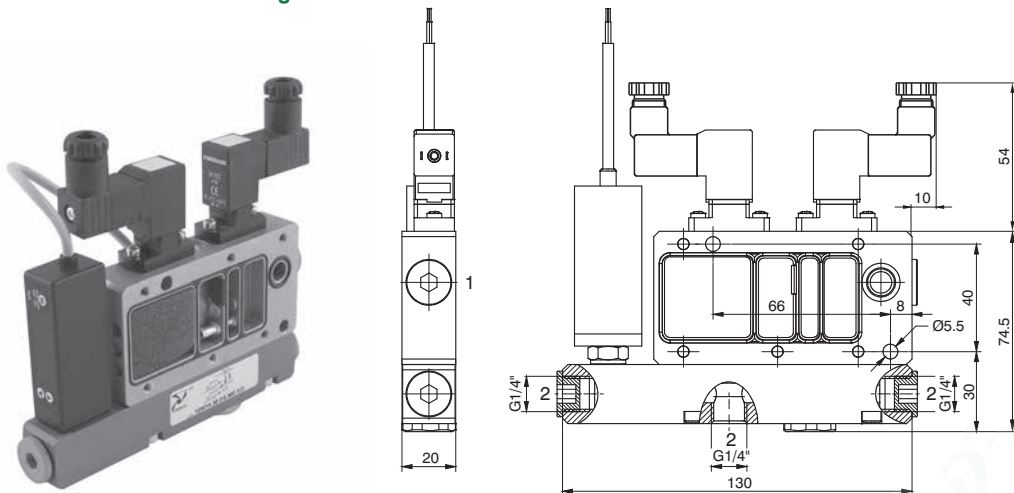
These can be ordered as individual components in the desired number and capacity, although to mount them onto the “SE” generator, a kit with a number of screws corresponding to the number of modules to be attached is necessary.

The “ME” vacuum generators comprise the same components as the “SE” generators do, except for the sealing cap; their operation and use are the same as the “SE” vacuum generator on which they are mounted.



Series 1900

Modular multifunction vacuum generator

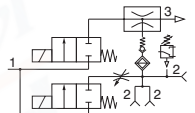


Ordering code

19M14.M.09.ME.⊙

OPTIONS

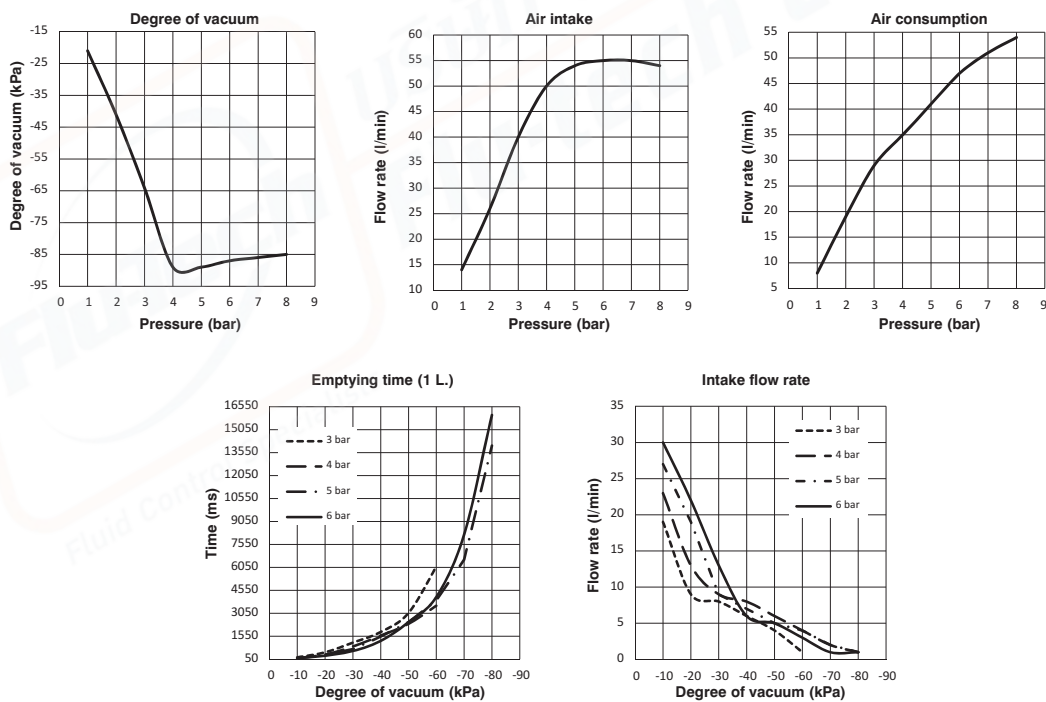
- ED = Solenoid valves + vacuum switch cable 2 Mt.
- EF = Solenoid valves + vacuum switch cable 30 cm and connector M8
- 01 = Solenoid valve without vacuum switch
- ⊙ = Vacuum switch without back pressure valve
- 04 = Without vacuum switch and back pressure valve
- 05 = Vacuum switch cable 30 cm and connector M8 without back pressure valve



Operational characteristics

- Inlet pressure (bar)	2	4	6
- Degree of Vacuum (-kPa)	41	89	87
- Intake flow rate (l/min)	26	50	55
- Air consumption (l/min)	19	35	47

Performance Charts

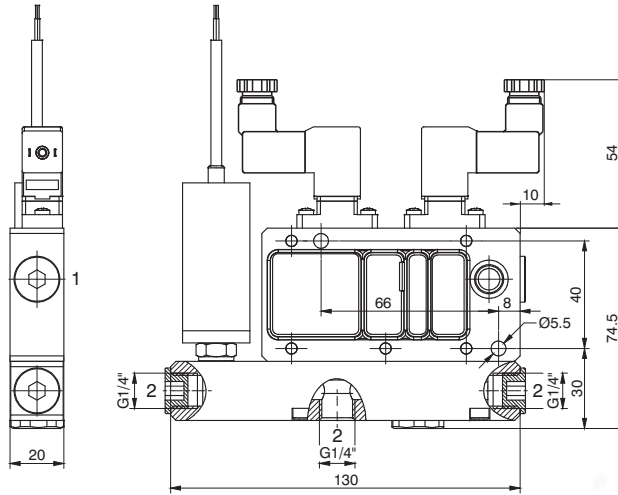


Technical characteristics

Fluid	Unlubricated filtered air
Pressure (bar)	0 ... 6
Inlet and release solenoid valve function	N.C.
Power consumption	4 Watt
Supply voltage	24 VDC
Solenoid valve - IP Rating	IP65
Vacuum switch output	2 PNP
Vacuum switch - IP Rating	IP40
Temperature (°C)	-10 ... +60
Weight (gr.)	474

VACUUM GENERATORS

Modular multifunction vacuum generator



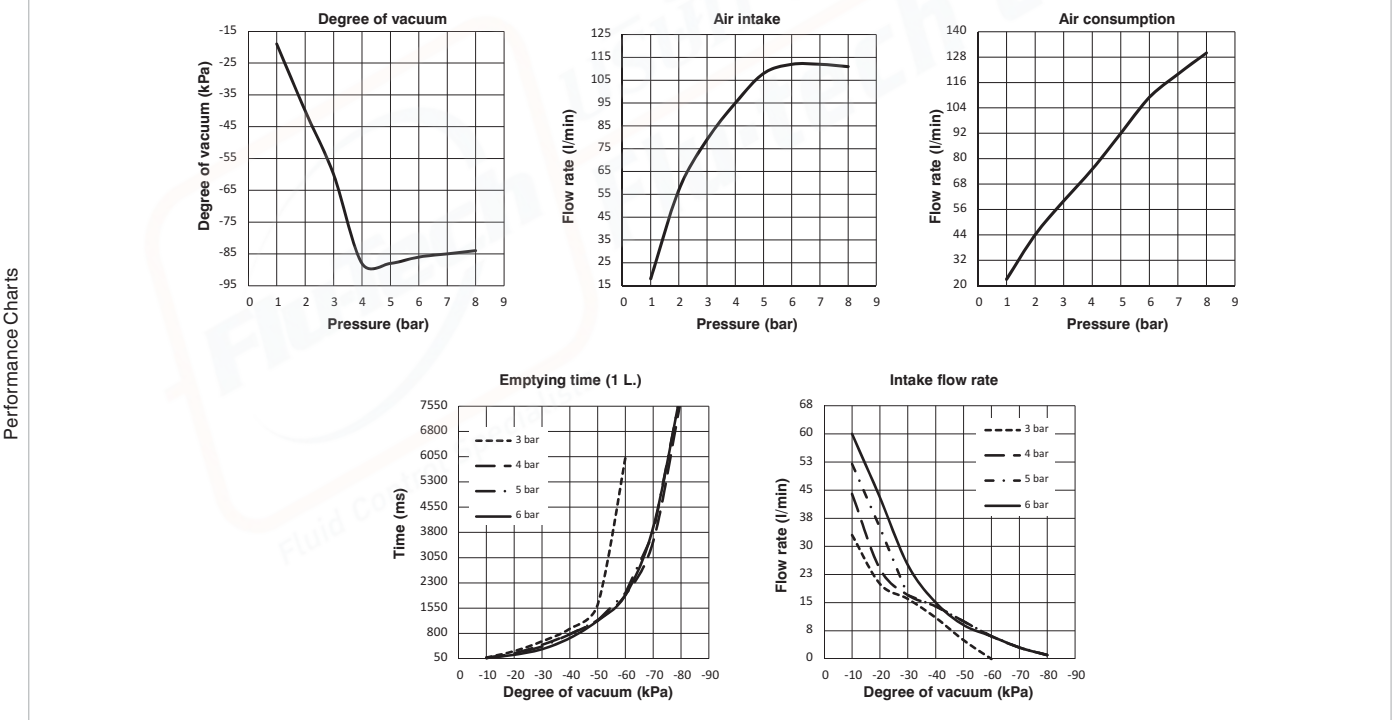
Ordering code
19M14.M.12.ME.⊙

OPTIONS

ED =	Solenoid valves + vacuum switch cable 2 Mt.
EF =	Solenoid valves + vacuum switch cable 30 cm and connector M8
01 =	Solenoid valve without vacuum switch
02 =	Vacuum switch without back pressure valve
04 =	Without vacuum switch and back pressure valve
05 =	Vacuum switch cable 30 cm and connector M8 without back pressure valve

Operational characteristics

- Inlet pressure (bar)	2	4	6
- Degree of Vacuum (-kPa)	40	88	86
- Intake flow rate (l/min)	57	95	112
- Air consumption (l/min)	44	75	109

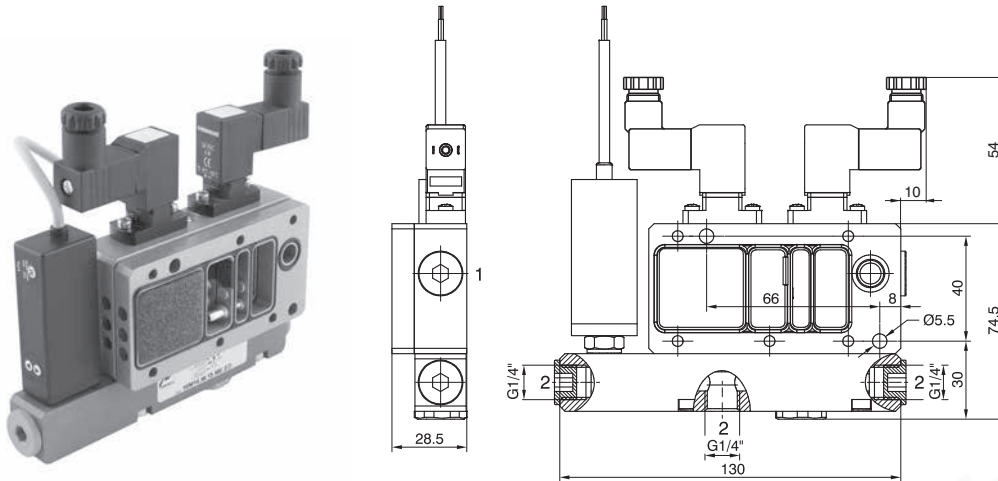


Technical characteristics

Fluid	Unlubricated filtered air
Pressure (bar)	0 ... 6
Inlet and release solenoid valve function	N.C.
Power consumption	4 Watt
Supply voltage	24 VDC
Solenoid valve - IP Rating	IP65
Vacuum switch output	2 PNP
Vacuum switch - IP Rating	IP40
Temperature (°C)	-10 ... +60
Weight (gr.)	474



Modular multifunction vacuum generator



Ordering code
19M14.M.15.ME.⊙

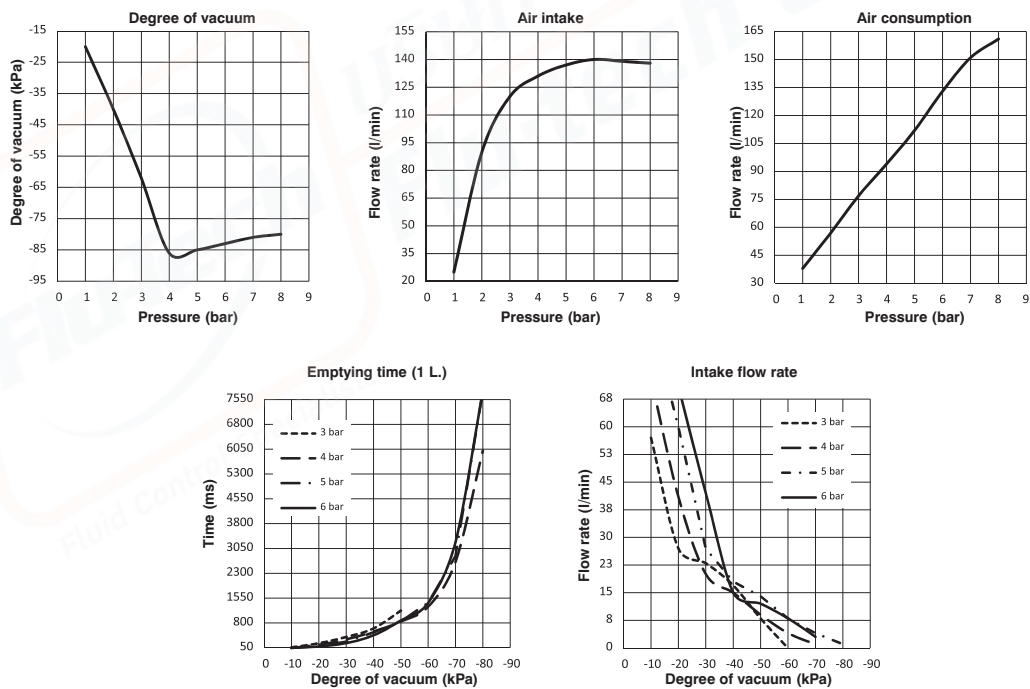
OPTIONS

- ED = Solenoid valves + vacuum switch cable 2 Mt.
- EF = Solenoid valves + vacuum switch cable 30 cm and connector M8
- 01 = Solenoid valve without vacuum switch
- ⊙ 02 = Vacuum switch without back pressure valve
- 04 = Without vacuum switch and back pressure valve
- 05 = Vacuum switch cable 30 cm and connector M8 without back pressure valve

Operational characteristics

- Inlet pressure (bar)	2	4	6
- Degree of Vacuum (-kPa)	40	86	83
- Intake flow rate (l/min)	90	131	140
- Air consumption (l/min)	57	94	133

Performance Charts

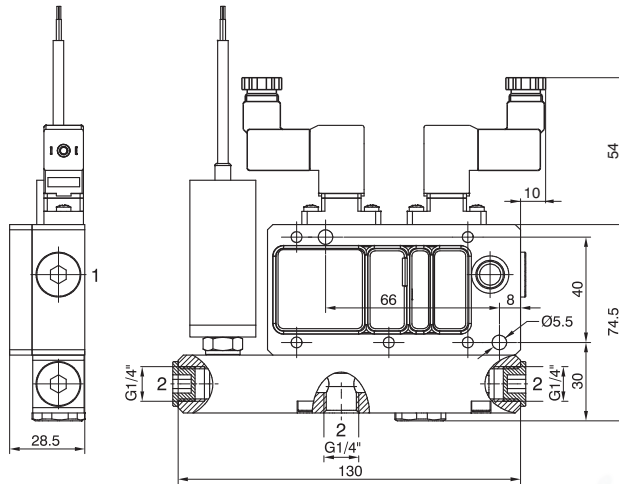


Technical characteristics

Fluid	Unlubricated filtered air
Pressure (bar)	0 ... 6
Inlet and release solenoid valve function	N.C.
Power consumption	4 Watt
Supply voltage	24 VDC
Solenoid valve - IP Rating	IP65
Vacuum switch output	2 PNP
Vacuum switch - IP Rating	IP40
Temperature (°C)	-10 ... +60
Weight (gr.)	537

VACUUM GENERATORS

Modular multifunction vacuum generator



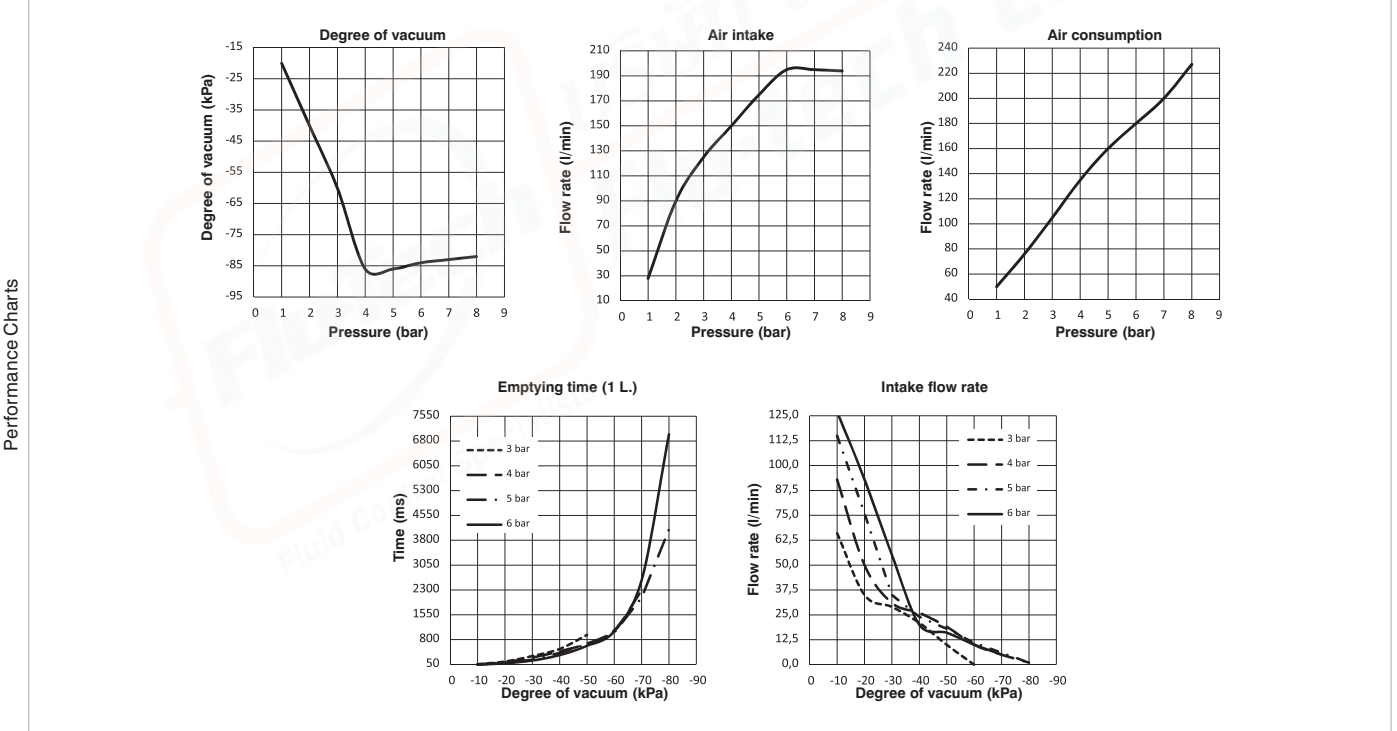
Ordering code
19M14.M.18.ME.⊙

OPTIONS

ED =	Solenoid valves + vacuum switch cable 2 Mt.
EF =	Solenoid valves + vacuum switch cable 30 cm and connector M8
01 =	Solenoid valve without vacuum switch
02 =	Vacuum switch without back pressure valve
04 =	Without vacuum switch and back pressure valve
05 =	Vacuum switch cable 30 cm and connector M8 without back pressure valve

Operational characteristics

- Inlet pressure (bar)	2	4	6
- Degree of Vacuum (-kPa)	40	86	84
- Intake flow rate (l/min)	90	150	195
- Air consumption (l/min)	76	135	180



Technical characteristics

Fluid	Unlubricated filtered air
Pressure (bar)	0 ... 6
Inlet and release solenoid valve function	N.C.
Power consumption	4 Watt
Supply voltage	24 VDC
Solenoid valve - IP Rating	IP65
Vacuum switch output	2 PNP
Vacuum switch - IP Rating	IP40
Temperature (°C)	-10 ... +60
Weight (gr.)	537

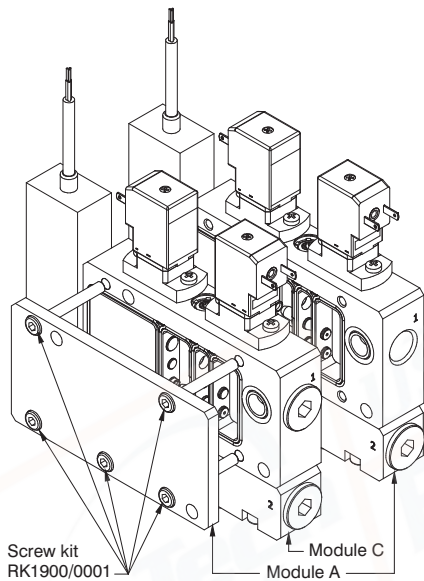


Modular vacuum systems

“SE” multifunction vacuum generators can be assembled with one or more “ME” intermediate modules, thus forming a modular vacuum system characterised by a compact shape and reduced size and weight.

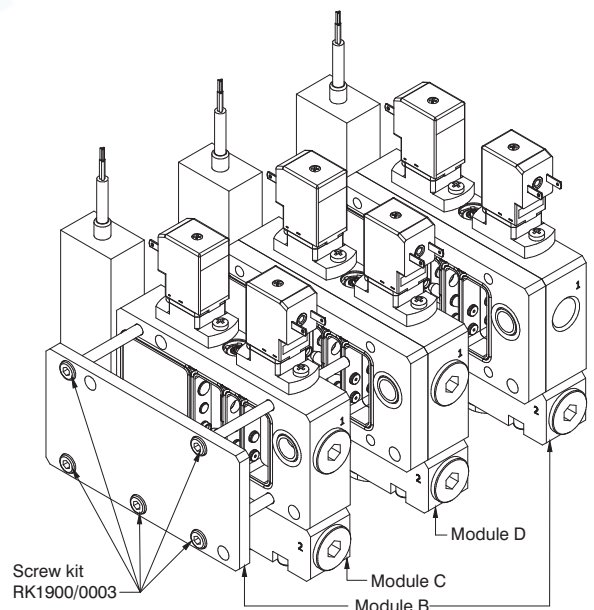
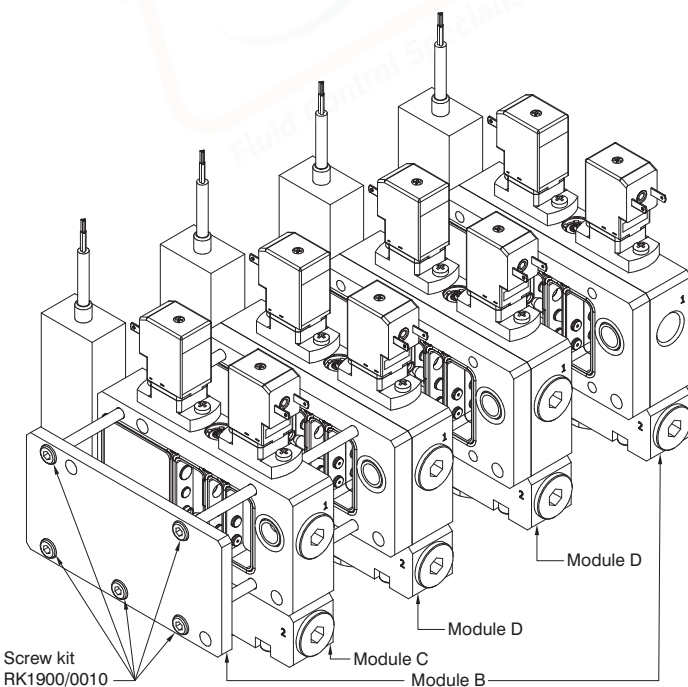
With standard screw kits up to 4 vacuum units A+1C+1D can be assembled together independently but, with use of threaded bars, the manifold can be expanded to many more positions.

Below are a number of examples showing ways the manifold can be put together.



	Screws kit codes	Screw dimension	
Combinations of standard modules	A+1C	RK1900/0001	M4X30
	A+2C	RK1900/0002	M4X50
	A+3C	RK1900/0003	M4X70
	A+1C+1D	RK1900/0004	M4X60
	A+1C+2D	RK1900/0005	M4X90
	A+2C+1D	RK1900/0006	M4X80
	A+3D	RK1900/0007	M4X100
	A+2D	RK1900/0003	M4X70
	A+1D	RK1900/0008	M4X40
	B+1C	RK1900/0008	M4X40
	B+2C	RK1900/0004	M4X60
	B+3C	RK1900/0006	M4X80
B+1C+1D	RK1900/0003	M4X70	
B+1C+2D	RK1900/0007	M4X100	
B+2C+1D	RK1900/0005	M4X90	
B+2D	RK1900/0006	M4X80	
B+1D	RK1900/0002	M4X50	

The letters of the modules correspond to purchase codes	
A	19M14.M.09.SE.ED
	19M14.M.12.SE.ED
B	19M14.M.15.SE.ED
	19M14.M.18.SE.ED
C	19M14.M.09.ME.ED
	19M14.M.12.ME.ED
D	19M14.M.15.SE.ED
	19M14.M.18.SE.ED



VACUUM GENERATORS

