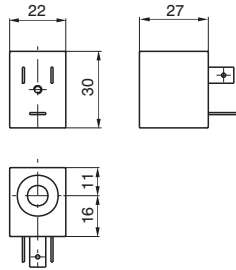


**Coil**

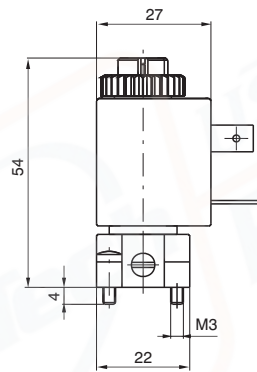
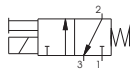


Weight 54 gr.

\* Use only with M2/9

Ordering code	Available voltages Coils
<b>MB 4</b> <b>MB 5</b> <b>MB 6</b>	12 D.C. 24 D.C. 48 D.C. Direct current
<b>MB 9*</b>	24 D.C. (2 Watt) (Direct current, low consumption)
<b>MB 17</b> <b>MB 21</b> <b>MB 22</b> <b>MB 24</b>	24/50 48/50 110/50 230/50 Alternating current 50 Hz
<b>MB 37</b> <b>MB 39</b> <b>MB 41</b>	24/60 110/60 230/60 Alternating current 60 Hz
<b>MB 56</b> <b>MB 57</b> <b>MB 58</b>	24/50-60 110/50-60 230/50-60 Alternating current 50/60 Hz
<b>MB 66</b> <b>MB 67</b> <b>MB 68</b>	24/50-60 110/50-60 230/50-60 Alternating current (low consumption) 50/60 Hz

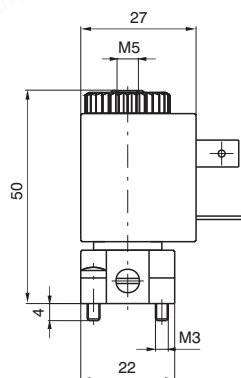
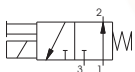
**Miniature solenoid valve Normally Closed (N.C.)**



Weight 100 gr.

Ordering code	Available voltages Miniature solenoid valve N.C.
<b>M 2.4</b> <b>M 2.5</b> <b>M 2.6</b> <b>M 2.9</b>	12 D.C. 24 D.C. 48 D.C. 24 D.C. (2 Watt) Direct current
<b>M 2.17</b> <b>M 2.21</b> <b>M 2.22</b> <b>M 2.24</b>	24/50 48/50 110/50 230/50 Alternating current 50 Hz
<b>M 2.37</b> <b>M 2.39</b> <b>M 2.41</b>	24/60 110/60 230/60 Alternating current 60 Hz
<b>M 2.56</b> <b>M 2.57</b> <b>M 2.58</b>	24/50-60 110/50-60 230/50-60 Alternating current 50/60 Hz
<b>M 2.66</b> <b>M 2.67</b> <b>M 2.68</b>	24/50-60 110/50-60 230/50-60 Alternating current (low consumption) 50/60 Hz

**Miniature solenoid valve Normally Open (N.O.)**



Weight 103 gr.

Ordering code	Available voltages Miniature solenoid valve N.O.
<b>M 2/1.4</b> <b>M 2/1.5</b> <b>M 2/1.6</b> <b>M 2/1.9</b>	12 D.C. 24 D.C. 48 D.C. 24 D.C. (2 Watt) Direct current
<b>M 2/1.17</b> <b>M 2/1.21</b> <b>M 2/1.22</b> <b>M 2/1.24</b>	24/50 48/50 110/50 230/50 Alternating current 50 Hz
<b>M 2/1.37</b> <b>M 2/1.39</b> <b>M 2/1.41</b>	24/60 110/60 230/60 Alternating current 60 Hz
<b>M 2/1.56</b> <b>M 2/1.57</b> <b>M 2/1.58</b>	24/50-60 110/50-60 230/50-60 Alternating current 50/60 Hz

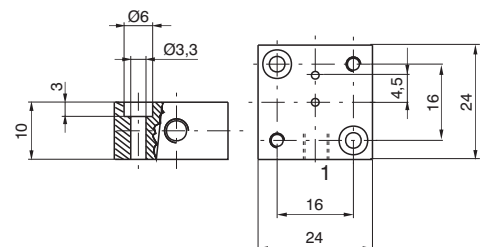
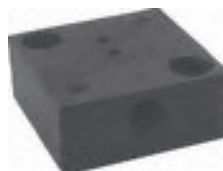
**External feeding base**

Use with solenoid valves for piloting pressure different from the using pressure

Ordering code

**305.10.05**

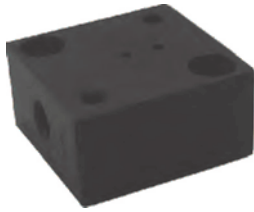
Weight 18 gr.





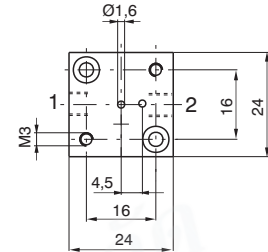
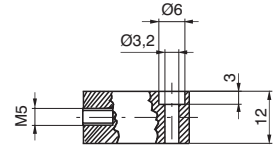
Individual base

In line ports - thread M5



1 = INLET PORT (N.C.)  
2 = OUTLET PORT

With a N.O. miniature solenoid valve  
1 = EXHAUST  
2 = OUTLET PORT



Ordering code

**305.00.00**

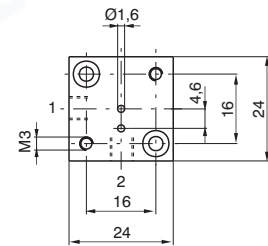
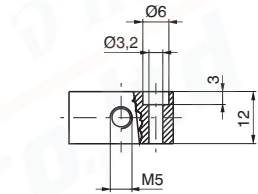
Weight 56 gr.

90° Port - thread M5



1 = INLET PORT (N.C.)  
2 = OUTLET PORT (N.C.)

With a N.O. miniature solenoid valve  
1 = EXHAUST  
2 = OUTLET PORT



Ordering code

**305.90.00**

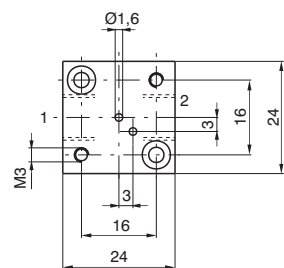
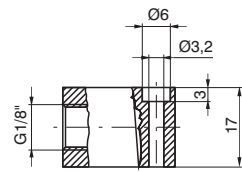
Weight 56 gr.

In line ports - thread G 1/8"



1 = INLET PORT (N.C.)  
2 = OUTLET PORT (N.C.)

With a N.O. miniature solenoid valve  
1 = EXHAUST  
2 = OUTLET PORT



Ordering code

**305.00.18**

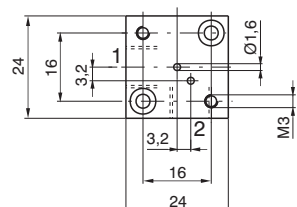
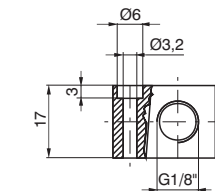
Weight 75 gr.

90° Port - thread G 1/8"



1 = INLET PORT (N.C.)  
2 = OUTLET PORT (N.C.)

With a N.O. miniature solenoid valve  
1 = EXHAUST  
2 = OUTLET PORT



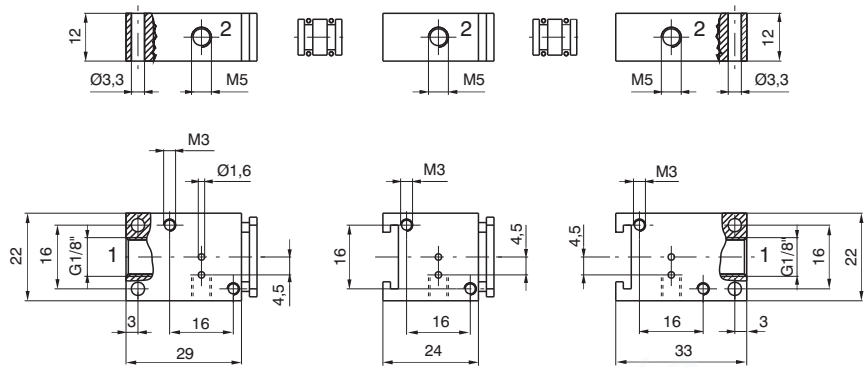
Ordering code

**305.90.18**

Weight 75 gr.

AIR DISTRIBUTION 1

Modular bases for series mounting



Ordering code

Initial base  
**305.05.00**  
Weight 57 gr.

Intermediate base  
**305.06.00**  
Weight 44 gr.

Last base  
**305.07.00**  
Weight 53 gr.

Bored spacer  
**305.05.01**  
Weight 3 gr.

Solid spacer  
**305.05.02**  
Weight 4 gr.

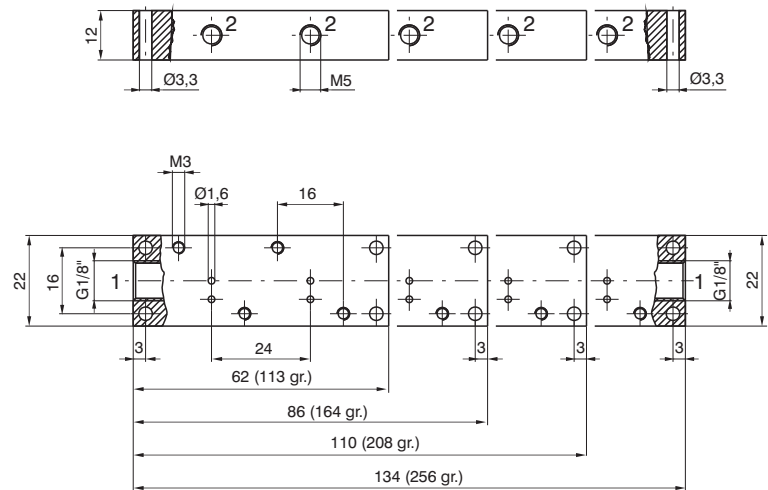
Initial base

Intermediate base

Last base



Multiple integral bases for series mounting



Ordering code

**305.08.02** 2 positions  
**305.08.03** 3 positions  
**305.08.04** 4 positions  
**305.08.05** 5 positions

