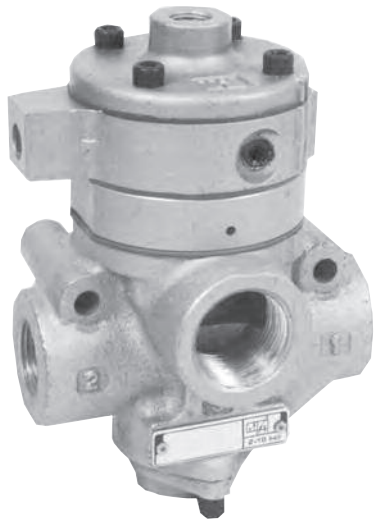


VANGUARD Remote Air Pilot 3/2 Valves with V470 Models

Delayed-Pressure-Buildup Function Port Sizes: 1/4 to 1



Model Shown: V470-2N4

- ◆ Delayed pressure buildup (DPB); rate of pressure buildup adjustable.
- ◆ 3-Way poppet valve. Available in two body sizes and five port sizes.
- ◆ Uses remote pilot control.
- ◆ Threaded exhaust port to accommodate a silencer or a line for remote exhausting.
- ◆ NPTF port threads; optional BSPP threads.

SPECIFICATIONS

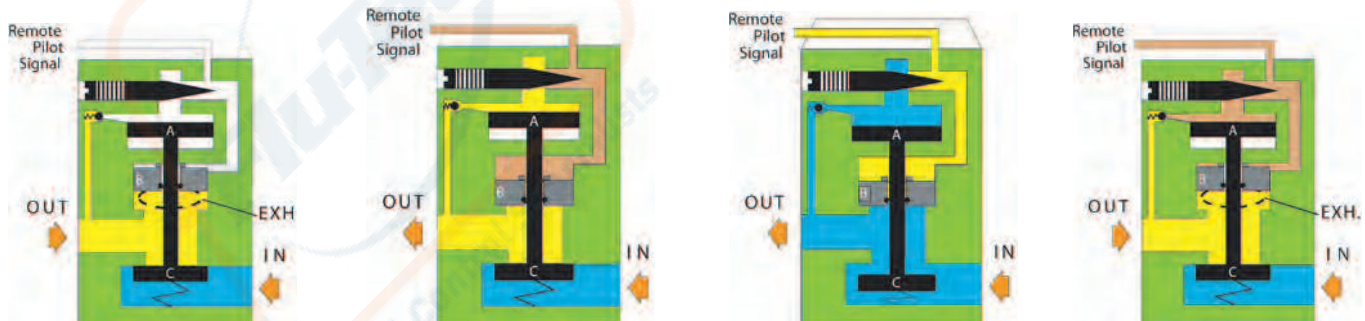
Ambient/Media Temperature:

40° to 175°F (4° to 80°C).

Fluid Media: Compressed air.

Inlet Pressure: 15 to 150 psig (1 to 10 bar).

VALVE OPERATION



No pilot signal. Inlet air is blocked by poppet C. Piston B slides on the valve stem and is pushed upward if there is any downstream pressure. This opens the exhaust and vents the downstream line.

Pilot signal applied. Pilot air forces piston B downward to close exhaust port. Pilot air also flows past the metering pin, opens the ball check, and slowly pressurizes the outlet line. Pressure is also building up on piston A.

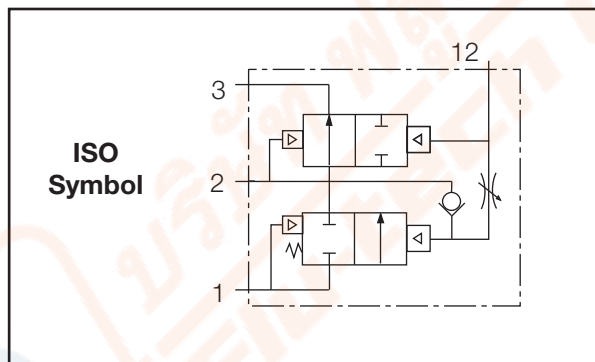
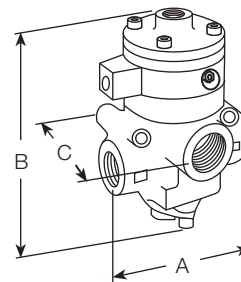
When the pressure on piston A reaches 50% of inlet pressure, the piston is forced downward, opening inlet poppet C. Full inlet pressure now flows freely to the outlet port.

Pilot signal removed. Air above pistons A and B is exhausted through the exhaust port of the remote pilot valve. Air above poppet C forces sliding piston B up so that the main exhaust port is opened and pressurized air is exhausted.



DIMENSIONS inches (mm)

Port Sizes		Average C_v		A	B	C
In-Out	Exh	1 to 2	2 to 3			
1/4	1/2	2.5	3.1			
3/8	1/2	3.6	5.3	4.2 (107)	5.3 (136)	3.2 (79)
1/2	1/2	3.3	5.3			
1/2	1	6.3	9.2			
3/4	1	7.7	11	4.7 (118)	6.1 (155)	3.6 (92)
1	1	8.0	12			



ORDERING INFORMATION

Select the port sizes in the sample model number below to specify the valve you want.

V470 - 2 N4 W

INLET/OUTLET PORTS

- 1/4 NPTF..... 2
- 3/8 NPTF..... 3
- 1/2 NPTF..... 4
- 3/4 NPTF..... 6
- 1 NPTF..... 8

PORT TYPE

- NPTF threads Leave Blank
- BSPP threads W

EXHAUST PORT SIZE:

- 1/2 exhaust port N4
1/4, 3/8, 1/2 inlet / outlet ports
- 1 exhaust port N8
1/2, 3/4, 1 inlet / outlet ports

