



PRODUCT INFORMATION

MECHANICAL OPERATED VALVES

11 SERIES

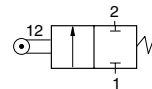


ROSS CONTROLS

Mechanical Cam Valves Cam Roller & Plunger

Heavy-Duty 11 Series

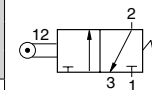
2-Way 2-Position Valves, 2-Direction Cam Roller						
Port Size	Valve Model Number		C _v	Average Response Constants**		Weight lb (kg)
	NPT Threads	G Threads		F	In-Out	
1/4	1131A2001	D1131A2001	0.5	2.5		1.0 (0.5)



2-Direction
Roller



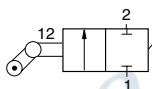
3-Way 2-Position Valves, 2-Direction Cam Roller						
Port Size	Valve Model Number		C _v	Average Response Constants**		Weight lb (kg)
	NPT Threads	G Threads		F		
				In-Out	Out-Exh.	
1/4	1133A2001	D1133A2001	0.5	2.5	3.2	1.0 (0.5)



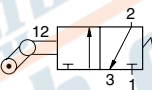
1-Direction
Roller



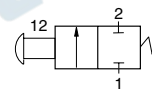
2-Way 2-Position Valves, 1-Direction Cam Roller						
Port Size	Valve Model Number		C _v	Average Response Constants**		Weight lb (kg)
	NPT Threads	G Threads		F	In-Out	
1/4	1131A2002	D1131A2002	0.5	2.5		1.0 (0.5)



3-Way 2-Position Valves, 1-Direction Cam Roller						
Port Size	Valve Model Number		C _v	Average Response Constants**		Weight lb (kg)
	NPT Threads	G Threads		F		
				In-Out	Out-Exh.	
1/4	1133A2002	D1133A2002	0.5	2.5	3.2	1.0 (0.5)



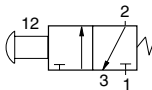
2-Way 2-Position Valves, Plunger						
Port Size	Valve Model Number		C _v	Average Response Constants**		Weight lb (kg)
	NPT Threads	G Threads		F	In-Out	
1/4	1131A2003	D1131A2003	0.5	2.5		1.0 (0.5)



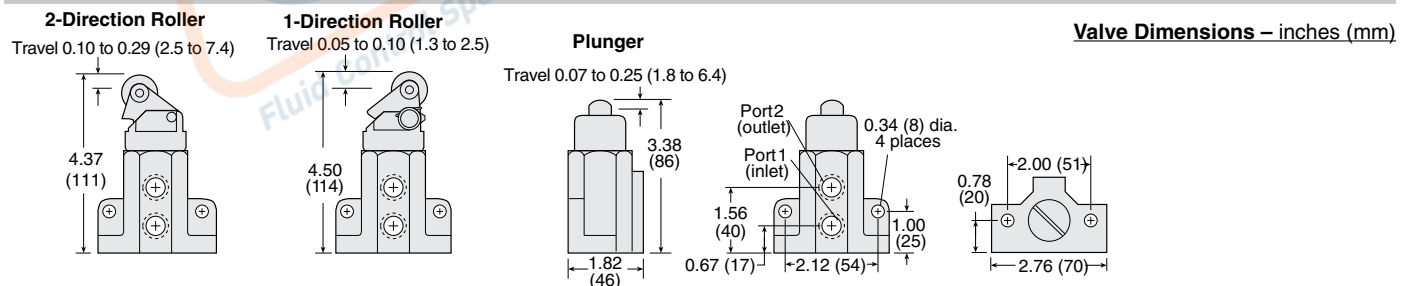
Plunger



3-Way 2-Position Valves, Plunger						
Port Size	Valve Model Number		C _v	Average Response Constants**		Weight lb (kg)
	NPT Threads	G Threads		F		
				In-Out	Out-Exh.	
1/4	1133A2003	D1133A2003	0.5	2.5	3.2	1.0 (0.5)



** **Valve Response Time** – Response Time (msec) = M + (F • V). This is the average time required to fill a volume V (cubic inches) to 90% of supply pressure or to exhaust it to 10% of supply pressure. F values are given in the chart above. M values for manually operated valves depend on the speed of actuation, and may be taken as zero for most practical applications.



ACCESSORIES

Silencers for 3-way Valves	Port Size	Thread Type	Model Number		Avg. C _v	Dimensions inches (mm)		Weight lb (kg)
			NPT Threads	BSPT Threads		Width	Length	
	1/4	Male	5500A2003	D5500A2003	2.1	0.9 (21)	2.2 (55)	0.1 (0.1)

Pressure Range: 0 to 290 psig (0 to 20 bar) maximum. **Flow Media:** Filtered air.

STANDARD SPECIFICATIONS (for valves on this page):

Construction Design	Poppet	Flow Media	Filtered air
Mounting Type	Side and bottom mounting flanges	Operating Pressure	5 to 150 psig (0.3 to 10 bar)
Temperature	Ambient/Media: -10° to 175°F (-23° to 80°C)	Construction Material	Valve Body: Cast Aluminum
	For temperatures below 40°F (4°C) air must be free of water vapor to prevent formation of ice. For temperatures below -10°F (-23°C), consult ROSS.		



บริษัท ฟลูเทค จำกัด
FLU-TECH CO.,LTD

845/3-4 หมู่ 3 ถ.เทพารักษ์ ต.เทพารักษ์ อ.เมือง จ.สมุทรปราการ 10270
845/3-4 Thepharak RD., T.Thepharak, A.Muang, Samutprakarn 10270 THAILAND
Tel. 0 2384 6060, Fax 0 2384 5701, Email : sales@flutech.co.th, www.flutech.co.th