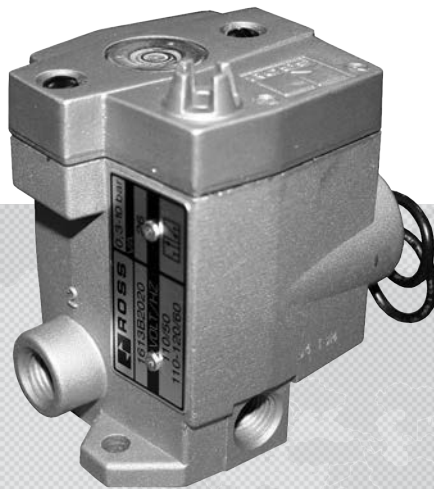




PRODUCT INFORMATION

COMPACT VALVES

16 SERIES



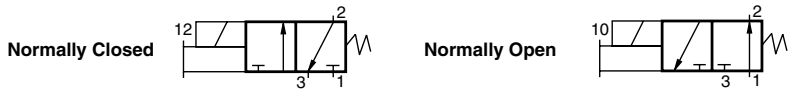
ROSS CONTROLS

Compact Valves Solenoid Pilot Controlled

16 Series



3-Way 2-Position Valves, Spring Return									
Port Size	Normally Closed		Normally Open		C _v		Average Response Constants**		Weight lb (kg)
	Valve Model Number#		Valve Model Number#						
1, 2, 3	NPT Threads	G Threads	NPT Threads	G Threads	NC	NO	M	F	
1/8	1613B1020W	D1613B1020W	1614B1020W	D1614B1020W	0.3	0.3	5	2.90	1.4 (0.6)
1/4	1613B2020W	D1613B2020W	1614B2020W	D1614B2020W	0.3	0.3	5	2.90	1.4 (0.6)



4-Way 2-Position Valves, Spring Return							
Port Size	Valve Model Number#		C _v		Average Response Constants**		Weight lb (kg)
1, 2, 3, 4	NPT Threads	G Threads	1-2	2-4	M	F	
1/4	1616C2020W	D1616C2020W	0.3	0.3	5	2.90	2.4 (1.1)

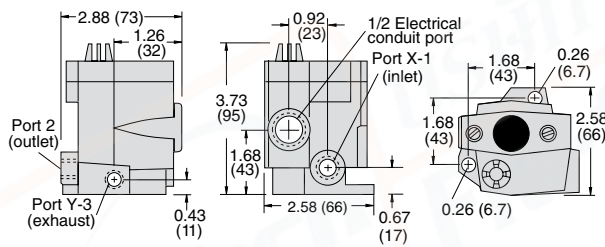


Voltage: W=24 VDC; Z=110-120 VAC, 50/60 Hz, e.g., 1613B1020Z. For other voltages, consult ROSS.

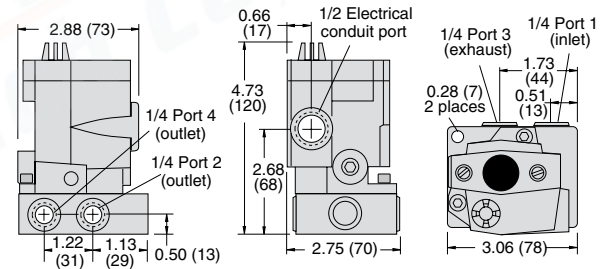
** Valve Response Time – Response Time (msec) = M + (F • V). This is the average time required to fill a volume V (cubic inches) to 90% of supply pressure or to exhaust it to 10% of supply pressure. M and F values are shown above.

Valve Dimensions – inches (mm)

3/2 Valves



4/2 Valves



D

ACCESSORIES & OPTIONS

Silencers



Port Size	Thread Type	Model Number		Avg. C _v
		NPT Threads	R/Rp Threads	
1/8	Male	5500A1003	D5500A1003	1.2
1/4	Male	5500A2003	D5500A2003	2.1

Pressure Range: 0 to 290 psig (0 to 20 bar) maximum. Flow Media: Filtered air.

Indicator Light Kits

The indicator light gives the option to visually verify valve operation, it extends through the solenoid or pilot cover and is illuminated when the solenoid is energized.

Kit Number		Indicator Light
24 volts DC	110-120 volts AC 50-60 Hz	
862K87-W	862K87-Z	

Manual Override Kits

FLUSH BUTTON		EXTENDED BUTTON	EXTENDED BUTTON with PALM	
Locking Type	Kit Number		Locking Type	Kit Number
Non-Locking	790K87		Non-Locking	984H87
Locking	792K87		Non-Locking	984H87

Buttons in the override kits are made of metal and are spring-returned. The locking type button, can be kept in the actuated position by turning the slot in the top of the button with a screwdriver.

STANDARD SPECIFICATIONS (for valves on this page):

Construction Design	Poppet	Flow Media	Filtered air
Mounting Type	In-line	Operating Pressure	3/2 Valves: 5 to 150 psig (0.3 to 10 bar) 4/2 Valves: 30 to 150 psig (2 to 10 bar)
Solenoids	Rated for continuous duty	Construction Material	Valve Body: Cast Aluminum Seals: Buna-N
Voltage	24 volts DC; 110-120 volts AC, 50/60 Hz	Manual Override	Flush; rubber, non-locking
Power Consumption	14 watts on DC; 87 VA inrush, 30 VA holding on 50 or 60 Hz		
Temperature	Ambient: 40° to 120°F (4° to 50°C) Media: 40° to 175°F (4° to 80°C)		

D6



บริษัท ฟลูเทค จำกัด
FLU-TECH CO.,LTD

845/3-4 หมู่ 3 ถ.เทพารักษ์ ต.เทพารักษ์ อ.เมือง จ.สมุทรปราการ 10270
845/3-4 Thepharak RD., T.Thepharak, A.Muang, Samutprakarn 10270 THAILAND
Tel. 0 2384 6060, Fax 0 2384 5701, Email : sales@flutech.co.th, www.flutech.co.th

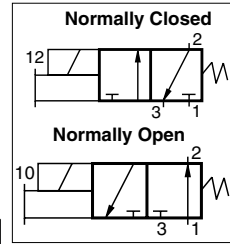
Compact Valves and Manifolds

Solenoid Pilot Controlled

16 Series

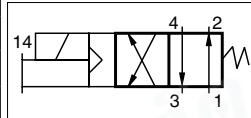
3-Way 2-Position Valves, Spring Return									
Port Size	Normally Closed		Normally Open		C _v		Average Response Constants**		Weight lb (kg)
	Valve Model Number#		Valve Model Number#						
1, 2, 3	NPT Threads	G Threads	NPT Threads	G Threads	NC	NO	M	F	
1/4	1613C2322W	D1613C2322W	1614B2322W	D1614B2322W	0.3	0.3	5	2.90	2.4 (1.1)

Manifold not included with the valve. Order manifold station model number **256B91**.



4-Way 2-Position Valves, Spring Return							
Port Size	Valve Model Number#		C _v		Average Response Constants**		Weight lb (kg)
	NPT Threads	G Threads	1-2	2-4	M	F	
1/4	1616C2322W	D1616C2322W	0.3	0.3	5	2.90	2.4 (1.1)

Manifold not included with the valve. Order manifold station model number **257B91**.

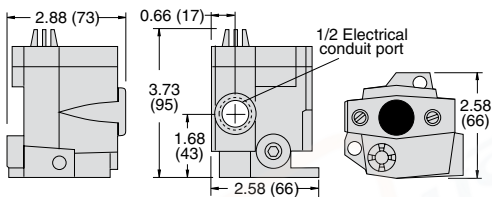


Voltage: W=24 VDC; Z=110-120 VAC, 50/60 Hz, e.g., 1613C2322Z. For other voltages, consult ROSS.

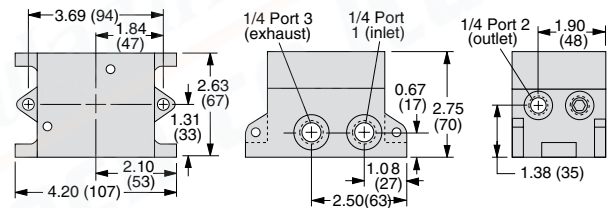
** Valve Response Time – Response Time (msec) = M + (F • V). This is the average time required to fill a volume V (cubic inches) to 90% of supply pressure or to exhaust it to 10% of supply pressure. M and F values are shown above.

Dimensions – inches (mm)

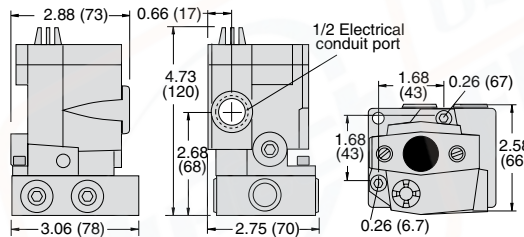
3/2 Valves



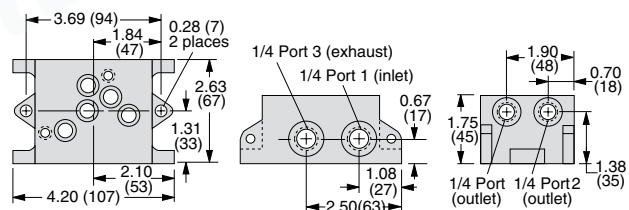
3/2 Manifold Station



4/2 Valves



4/2 Manifold Station



ACCESSORIES & OPTIONS

Silencers



Port Size	Thread Type	Model Number		Avg. C _v
		NPT Threads	R/Rp Threads	
1/8	Male	5500A1003	D5500A1003	1.2
1/4	Male	5500A2003	D5500A2003	2.1

Pressure Range: 0 to 290 psig (0 to 20 bar) maximum. Flow Media: Filtered air.

Indicator Light Kits

The indicator light gives the option to visually verify valve operation, it extends through the solenoid or pilot cover and is illuminated when the solenoid is energized.

Kit Number		Indicator Light
24 volts DC	110-120 volts AC 50-60 Hz	
862K87-W	862K87-Z	

Manual Override Kits

FLUSH BUTTON		
Locking Type	Kit Number	
Non-Locking	790K87	
Locking	792K87	

EXTENDED BUTTON		
Locking Type	Kit Number	
Non-Locking	791K87	

EXTENDED BUTTON with PALM		
Locking Type	Kit Number	
Non-Locking	984H87	

Buttons in the override kits are made of metal and are spring-returned. The locking type button, can be kept in the actuated position by turning the slot in the top of the button with a screwdriver.

STANDARD SPECIFICATIONS (for valves on this page):

Construction Design	Poppet	Flow Media	Filtered air
Mounting Type	In-line	Operating Pressure	3/2 Valves: 5 to 150 psig (0.3 to 10 bar) 4/2 Valves: 30 to 150 psig (2 to 10 bar)
Solenoids	Rated for continuous duty	Construction Material	Valve Body: Cast Aluminum Poppet: Acetal Seals: Buna-N
Voltage	24 volts DC; 110-120 volts AC, 50/60 Hz	Manual Override	Flush; rubber, non-locking
Power Consumption	14 watts on DC; 87 VA inrush, 30 VA holding on 50 or 60 Hz		
Temperature	Ambient: 40° to 120°F (4° to 50°C) Media: 40° to 175°F (4° to 80°C)		



บริษัท ฟลูเทค จำกัด
FLU-TECH CO.,LTD

845/3-4 หมู่ 3 ถ.เทพารักษ์ ต.เทพารักษ์ อ.เมือง จ.สมุทรปราการ 10270
845/3-4 Thepharak RD., T.Thepharak, A.Muang, Samutprakarn 10270 THAILAND
Tel. 0 2384 6060, Fax 0 2384 5701, Email : sales@flutech.co.th, www.flutech.co.th