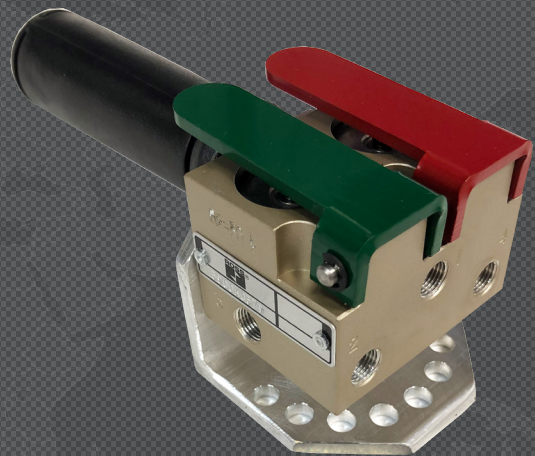
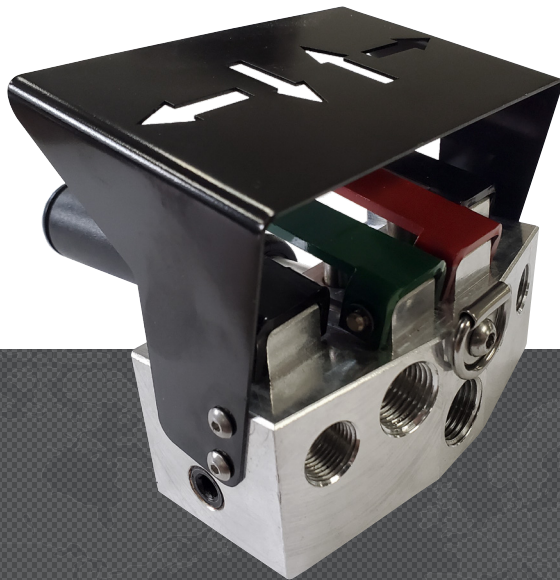




# PNEUMATIC PENDANT CONTROL VALVES

---



**ROSS CONTROLS**

# Product Information

ROSS Pendant Control Valves are ergonomically designed for ease of use. The durable construction is designed to withstand the toughest environments. The high-flow capacity allows for speed of operation, while the variable stroke allows for optimized control by the operator.

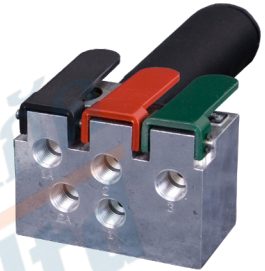


## FEATURES

- Long Life • High-Flow • Variable Control • High Speed • Feathering Capabilities
- Dirt Tolerant • Poppet Design • Ergonomic Design

## APPLICATIONS

- Air Hoists • Air Motors • Articulating Arms • Air Winches • Cylinder Actuation • End Effectors (clamps)
- Remote Pilot Signal for another Valve • Air Balancers • Lift Assist • Vacuum Pick & Place



<b>Single 3/2</b>	The Single 3/2 pendant control valve may be used anywhere that requires manual pressure control or signaling. Some applications include small single acting cylinders, vacuum cup automation and other material handling devices. Pendant control valves are also used as an air pilot for a larger directional control valve. ROSS offers a wide range of Remote Air Pilot Directional Control Valves with porting 1/4" to 2 1/2".
<b>Dual 2/2</b>	The Dual 2/2 pendant control valve can be used in various material handling applications: Load Balancers, Lift Assists and Articulating Arms or anywhere a simple 2-way air signal is needed.
<b>Dual 3/2</b>	The Dual 3/2 pendant control valve can be used in various material handling applications: Air Hoists, Double Acting Cylinders, End Effectors (clamping/gripping) and vacuum cup automation. Bi-directional Air Motors can be controlled by the Dual 3/2 or used in a circuit with a larger directional control valve to run large Air Motors. ROSS offers a wide range of Remote Air Pilot Directional Control Valves with porting 1/4" to 2 1/2".
<b>Triple 3/2</b>	The Triple 3/2 pendant control allows the convenience of three separate signals and can be used in many of the above automation functions.
<b>Quad 3/2</b>	The Quad 3/2 pendant control is frequently used in Air Hoist with Air Trolley systems. It can also be used in many of the above applications with the convenience of four signals in one handle.
<b>ROSS/FLEX® Solutions</b>	To optimize your application, ROSS offers a rapid response engineering design approach to deliver products specific to your automation needs. If you need to combine various functions in one pendant control, contact ROSS.

## STANDARD SPECIFICATIONS

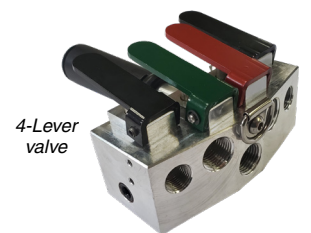
<b>GENERAL</b>	<b>Actuation</b>		Pneumatic: Manual lever(s)
	<b>Function</b>		Pendant control: 2-way (2/2) and 3-way (3/2)
	<b>Construction Design</b>		Poppet
	<b>Mounting</b>	<b>Type</b>	Line mounted
		<b>Orientation</b>	Hanging I-bolt and rigid dial mount
<b>Connection</b>		Threaded; NPT, G	
<b>OPERATING CONDITIONS</b>	<b>Temperature</b>	<b>Ambient/Media</b>	-40° to 175°F (-40° to 80°C)
			<i>For temperatures below 40°F (4°C) air must be free of water vapor to prevent formation of ice. For temperatures below -40°F (-40°C), consult ROSS.</i>
	<b>Flow Media</b>		Filtered air
<b>Operating Pressure</b>		0 to 150 psig (0 to 10 bar)	
<b>CONSTRUCTION MATERIAL</b>	<b>Valve Body</b>		Aluminum

**IMPORTANT NOTE:** Please read carefully and thoroughly all of the CAUTIONS, WARNINGS on the inside back cover.

# Product Selection

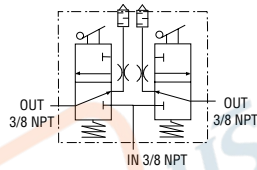
## High Flow with Variable Control

Valve Type	Port Size	# of Levers	# of Handles	Protective Cover	Model Number		C <sub>v</sub>
					NPT Threads	G Threads	
3/2	3/8	2-Lever	One	With	2025A3232	D2025A3232	2.0
				Without	2025A3231	D2025A3231	2.0
	1/2	4-Lever	One	With	2025A4432	D2025A4432	2.0
				Without	2025A4431	D2025A4431	2.0
	1/2	6-Lever	Two	Without	2025A4631	D2025A4631	2.0

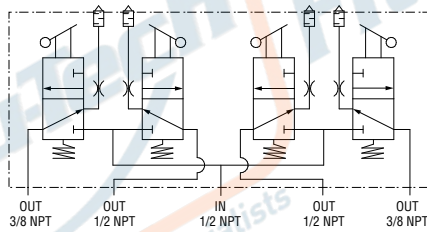


### Valve Schematics

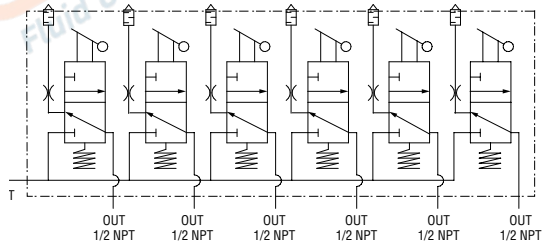
#### 2-Lever Valve



#### 4-Lever Valve



#### 6-Lever Valve



### Dimensions

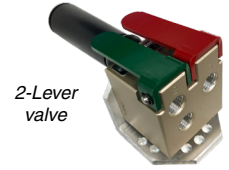
### Valve Technical Data

For additional information, and to assist you with piping and connectivity designs, our products are available in downloadable 2D and 3D CAD models in a wide range of formats at [www.rosscontrols.com](http://www.rosscontrols.com).

# Product Selection

## Rigid Dial Mount with Designed Control

Valve Type		Port Size	# of Levers	# of Handles	Model Number	C <sub>v</sub>	
					NPT Threads	1-2	2-3
2/2	Dual High-Flow	1/4	Two	None	2025A2901	0.73	0.55
				One	3900A0378	0.73	0.55
3/2	Single	1/4	One	None	2025A2910	0.24	0.42
				One	3900A1023	0.24	0.42
	Dual	1/8	Two	None	2025A1900	0.24	0.42
				One	3900A0379	0.24	0.42
	Triple	1/4	Three	None	2025A2902	0.24	0.42
				One	3900A0407	0.24	0.42



## Rigid Dial Mount with Designed Control and Hand Lever

Valve Type		Port Size	# of Levers	# of Handles	Model Number	C <sub>v</sub>	
					NPT Threads	1-2	2-3
3/2	Single	1/4	One	None	2025A2904	0.24	0.42
				One	3900A1111	0.24	0.42



Valve Type	Valve Schematics		
2-way	2-Lever Valve		
3-way	1-Lever Valve	2-Lever Valve	3-Lever Valve

Dimensions

Valve Technical Data

For additional information, and to assist you with piping and connectivity designs, our products are available in downloadable 2D and 3D CAD models in a wide range of formats at [www.rosscontrols.com](http://www.rosscontrols.com).

# Application Examples

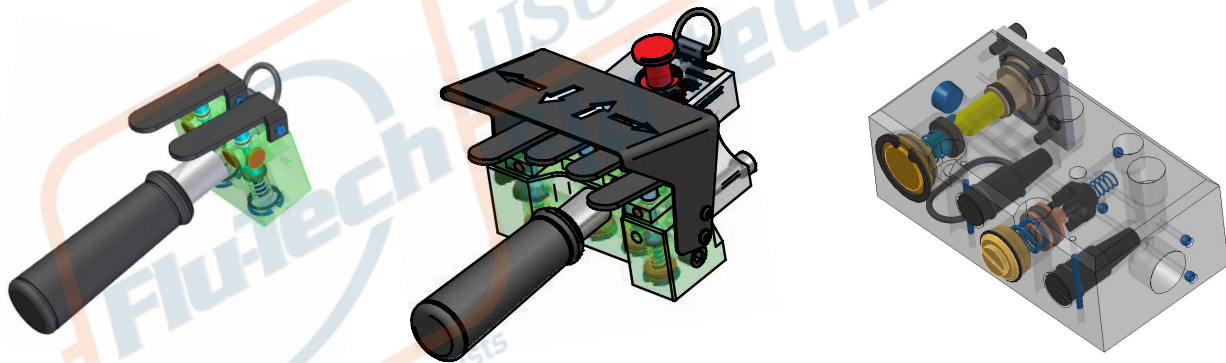
Application Examples			
Dual 2/2	<b>Air Balancer</b> 	<b>Articulating Arm (Lift Assist)</b> 	
	<b>Vacuum Cup Pick &amp; Place</b> 	<b>Single Acting Cylinder</b> 	
Single 3/2	<b>Air Hoist</b> 	<b>Bi-directional Air Motor</b> 	<b>Pilot for Larger Valve</b> 
	<b>Air Hoist with Trolley</b> 		
4-Lever 3/2			

## Optimize your Application with ROSS/FLEX®

ROSS/FLEX® Engineering Design Services will match your Pendant Control needs.



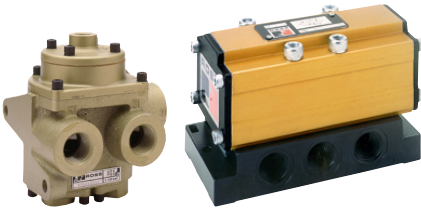

Does your application need a slightly different Pendant Control Valve? Our rapid response engineers will work directly with your team to develop a specific solution for your needs. Using ROSS/FLEX® methodology allows new products to be developed in days and weeks, instead of months and years. Top companies worldwide rely on ROSS/FLEX® to quickly solve problems and improve productivity.

- » # of Levers
- » Lever Colors
- » 2-way, 3-way, 4-way Combinations
- » Specific Flows
- » Various Mounting
- » Port Sizes and Thread Types
- » Corrosion Protection Coatings
- » Brass, Stainless Steel or other Materials
- » E-Stop Options
- » Air Balancer Designs
- » Available for Private Label



*Air Balancer Designs*

### Auxiliaries

Energy Isolation L-0-X®	Flow Control	Remote Air Control Valves	Air Preparation FRL's
			



**บริษัท ฟลูเทค จำกัด**  
**FLU-TECH CO.,LTD**

845/3-4 หมู่ 3 ถ.เทพารักษ์ ต.เทพารักษ์ อ.เมือง จ.สมุทรปราการ 10270  
845/3-4 Thepharak RD., T.Thepharak, A.Muang, Samutprakarn 10270 THAILAND  
Tel. 0 2384 6060, Fax 0 2384 5701, Email : sales@flutech.co.th, www.flutech.co.th