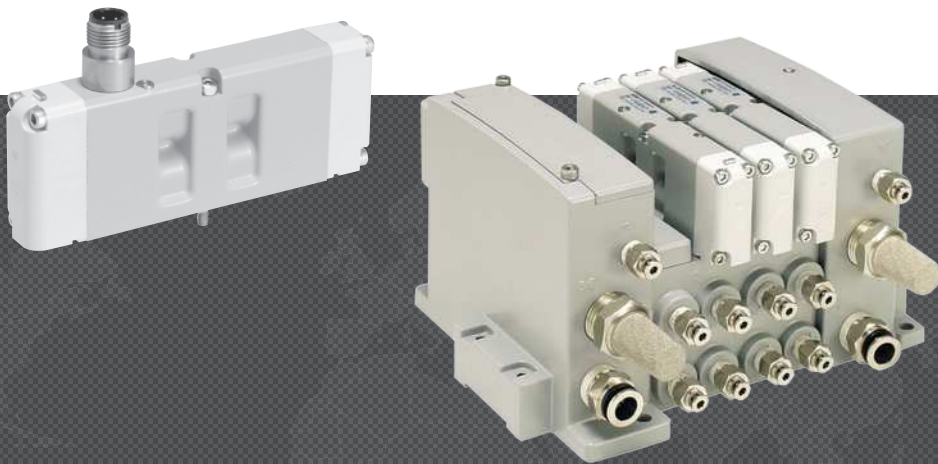




# DIRECTIONAL CONTROL ISO 15407-1 VALVES W66 SERIES

## PRODUCT CATALOG



# ISO 15407-1 Valves W66 Series

## Product Overview

The ROSS® ISO 15407-1 valves W66 Series are base mounted spool and sleeve valves that conform to the ISO standards 15407-1 mounting interface. These ISO Size 0 (26mm) and 00 (18mm) valves are available as, 2- and 3-position, 5-ported 4-way valves. Solenoid pilot options include a locking or non-locking override, and either internal or external pilot supply.

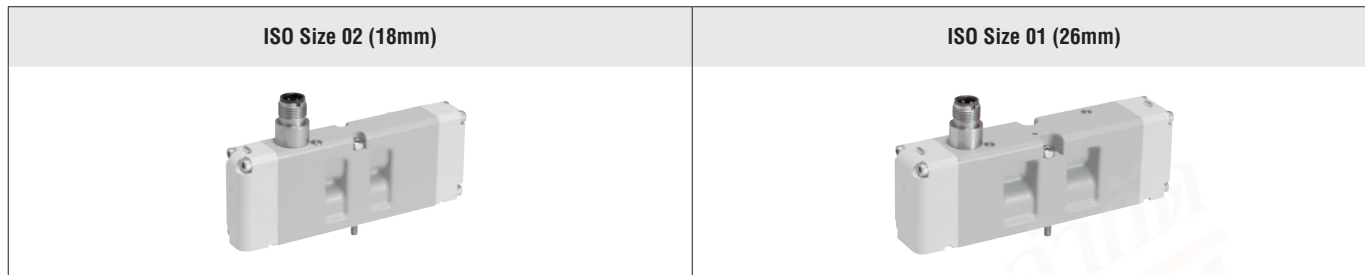
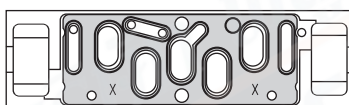


Illustration examples.

15407-1: Drop-cord Standards for Size 01 (26mm) & Size 02 (18mm) Wide Valves



### VALVE FEATURES

<b>Spool and Sleeve Design</b>	Spool and Sleeve construction for high dirt tolerance; no seals to wear out
<b>Mounting Options</b>	Individual sub-base or manifold base mounting
<b>Pilot Supply</b>	Internal or external; suitable for vacuum service (with external pilot supply)
<b>Pilot Operation</b>	Provides high shifting force with low power consumption

ISO Size	Port Size		Functions					Actuation	Maximum Flow C <sub>v</sub>	Page
	1/8	1/4	5/2		5/3					
			Single	Double	Closed Center	Open Center	Pressure Center			
02 (18mm)	●		●	●	●	●	●	●	1.0	3 – 7
01 (26mm)		●	●	●	●	●	●	●		
<b>Sub-Bases &amp; Manifold Bases</b>									8 – 9	
<b>Accessories and Options</b>									10	

## STANDARD SPECIFICATIONS

<b>GENERAL</b>	Function		5/2 and 5/3 Valve		
	Construction Design		Spool and Sleeve		
	Actuation		Electrical – Solenoid Pilot Controlled		
	Mounting		Sub-Base or Manifold		
	Connection		Threaded; G, NPT		
	Manual Override		Flush; rubber, non-locking		
<b>OPERATING CONDITIONS</b>	Temperature	Solenoid Pilot Controlled	Ambient	5° to 120°F (-15° to 50°C)	
			Media		
	Flow Media		Filtered air		
	Operating Pressure		Vacuum to 145 psig (Vacuum to 9.9 bar)		
	Pilot Supply Pressure	5/2 Valves	ISO Size 02 (18mm)	30 psig (2.07 bar)	
		5/3 Valves	ISO Size 01 (26mm)	25 psig (1.73 bar)	
External Pilot Supply		Must be equal to or greater than inlet pressure			
<b>ELECTRICAL DATA FOR SOLENOID PILOT</b>	Solenoids		Bi-polar, surge suppression (standard)		
	Operating Voltage (each solenoid)		24 volts DC 120 volts AC 60 Hz 230-240 volts AC, 60 Hz		
	Power Consumption		24 V DC – 5 watts 120 V AC – 1.0 VA inrush, 2.0 VA holding 230-240 V AC – 1.0 VA inrush, 2.0 VA holding		
	Indicator Light		One per solenoid		
<b>CONSTRUCTION MATERIAL</b>	Valve Body		Cast Aluminum		
	End Caps		Polybutylene Terephthalate (PBT)		
	Fasteners		Zinc Plated Steel		
	Coils		Thermoset Plastic		

**IMPORTANT NOTE:** Please read carefully and thoroughly all of the CAUTIONS, WARNINGS on the inside back cover.

## PRODUCT CREDENTIALS

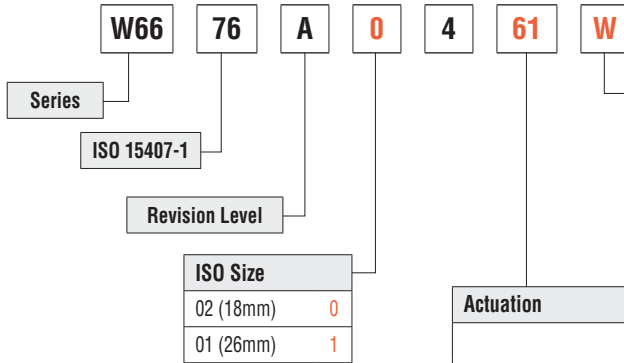
<p>CSA Certificate of Compliance</p> 	<p>CE Conformity Declaration</p> 	<p>EAC Conformity Declaration</p> 	<p>CRN Certification</p> <p>Available for appropriately tested valves</p>
--	--	---	---

# Ordering Information

## 5/2 Solenoid Pilot Controlled Valves

### MODEL NUMBER CONFIGURATOR

### 5-Way 2-Position Valves



Voltage*	
24 volts DC	W
110-120 volts AC, 50/60 Hz	Z
230-240 volts AC, 60 Hz	Y
* For other voltages consult ROSS.	

ISO Size	
02 (18mm)	0
01 (26mm)	1

Actuation	Options		
Single Solenoid Pilot	Non-Locking Overrides	Internal Pilot	61
		External Pilot	81
	Locking Overrides	Internal Pilot	71
		External Pilot	91
Double Solenoid Pilot	Non-Locking Overrides	Internal Pilot	67
		External Pilot	87
	Locking Overrides	Internal Pilot	77
		External Pilot	97

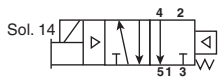
For other voltages, consult ROSS.

\* Sub-bases and manifold bases ordered separately. Please see Sub-Bases and Manifolds pages.

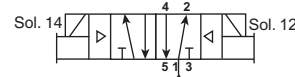
ISO Size	Valve Actuation	Flow C <sub>v</sub>	Weight lb (kg)
02 (18 mm)	Single Solenoid Pilot	0.55	0.3 (0.15)
	Double Solenoid Pilot	0.55	0.4 (0.16)
01 (26mm)	Single Solenoid Pilot	1.1	0.6 (0.25)
	Double Solenoid Pilot		

### Valve Schematic

#### Single Solenoid Pilot Controlled



#### Double Solenoid Pilot Controlled



บริษัท ฟลูเทค จำกัด  
FLU-TECH CO.,LTD

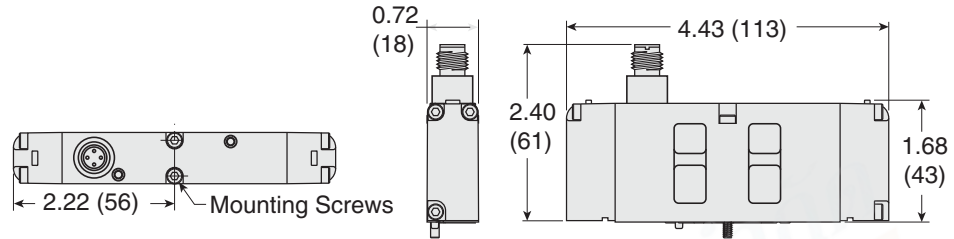
845/3-4 หมู่ 3 ถ.เทพารักษ์ ต.เทพารักษ์ อ.เมือง จ.สมุทรปราการ 10270  
845/3-4 Thepharak RD., T.Thepharak, A.Muang, Samutprakarn 10270 THAILAND  
Tel. 0 2384 6060, Fax 0 2384 5701, Email : sales@flutech.co.th, www.flutech.co.th

## 5/2 Solenoid Pilot Controlled Valves

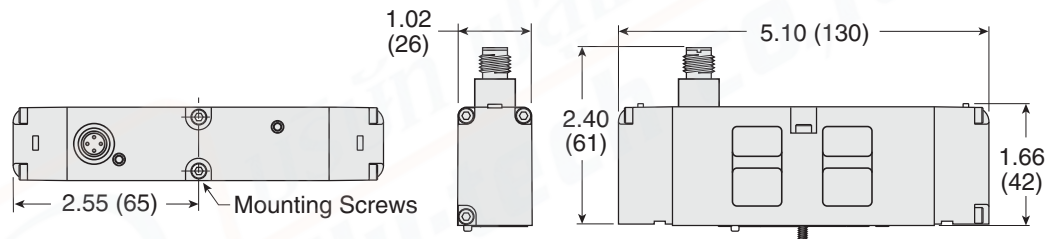
### DIMENSIONS

Inches (mm)

ISO Size 1



ISO Size 2.5



For additional information, and to assist you with piping and connectivity designs, our products are available in downloadable 2D drawings and 3D CAD models in a wide range of options including native formats. Please visit [www.rosscontrols.com](http://www.rosscontrols.com).



**บริษัท ฟลูเทค จำกัด**  
**FLU-TECH CO.,LTD**

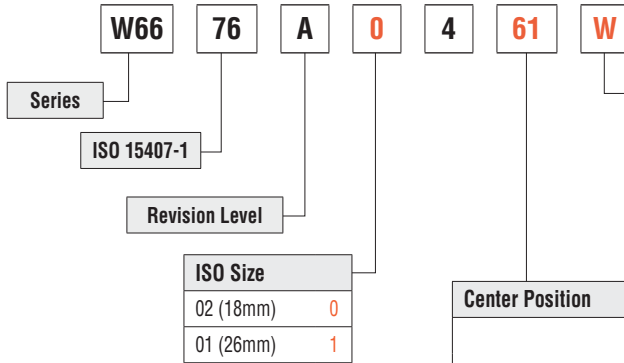
845/3-4 หมู่ 3 ต.เทพารักษ์ ต.เทพารักษ์ อ.เมือง จ.สมุทรปราการ 10270  
 845/3-4 Thepharak RD., T.Thepharak, A.Muang, Samutprakarn 10270 THAILAND  
 Tel. 0 2384 6060, Fax 0 2384 5701, Email : [sales@flutech.co.th](mailto:sales@flutech.co.th), [www.flutech.co.th](http://www.flutech.co.th)

# Ordering Information

## 5/3 Double Solenoid Pilot Controlled Valves

### MODEL NUMBER CONFIGURATOR

### 5-Way 3-Position Valves



Voltage*	
24 volts DC	W
110-120 volts AC, 50/60 Hz	Z
230-240 volts AC, 60 Hz	Y
* For other voltages consult ROSS.	

ISO Size	
02 (18mm)	0
01 (26mm)	1

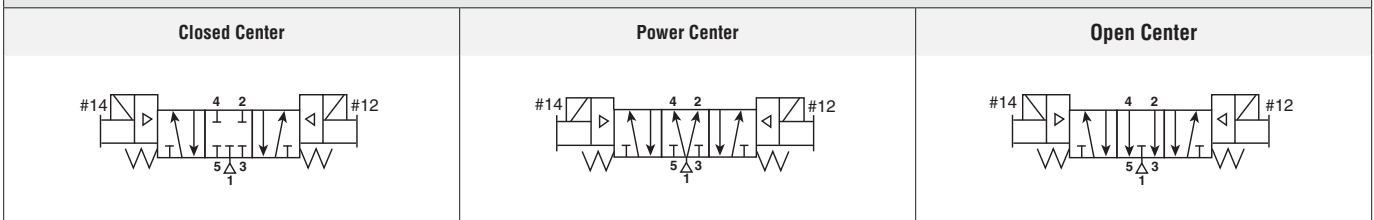
Center Position	Options		
Closed Center	Non-Locking Overrides	Internal Pilot	61
		External Pilot	81
	Locking Overrides	Internal Pilot	71
		External Pilot	91
Power Center	Non-Locking Overrides	Internal Pilot	63
		External Pilot	83
	Locking Overrides	Internal Pilot	73
		External Pilot	93
Open Center	Non-Locking Overrides	Internal Pilot	67
		External Pilot	87
	Locking Overrides	Internal Pilot	77
		External Pilot	97

For other voltages, consult ROSS.

\* Sub-bases and manifold bases ordered separately. Please see Sub-Bases and Manifolds pages.

ISO Size	Valve Actuation	Flow C <sub>v</sub>	Weight lb (kg)
02 (18 mm)	Double Solenoid Pilot	0.55	0.4 (0.16)
01 (26mm)	Double Solenoid Pilot	1.1	0.6 (0.25)

### Valve Schematic



**บริษัท ฟลูเทค จำกัด**  
**FLU-TECH CO.,LTD**

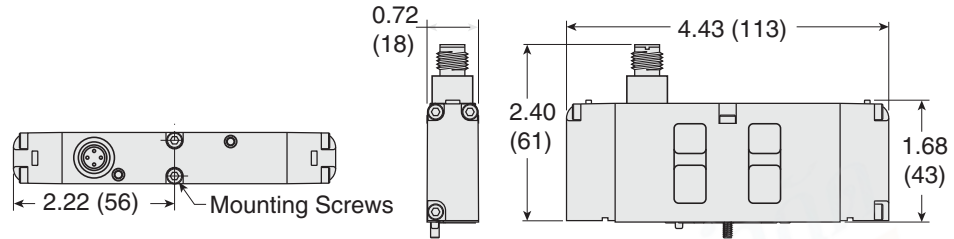
845/3-4 หมู่ 3 ถ.เทพารักษ์ ต.เทพารักษ์ อ.เมือง จ.สมุทรปราการ 10270  
845/3-4 Thepharak RD., T.Thepharak, A.Muang, Samutprakarn 10270 THAILAND  
Tel. 0 2384 6060, Fax 0 2384 5701, Email : sales@flutech.co.th, www.flutech.co.th

## 5/3 Double Solenoid Pilot Controlled Valves

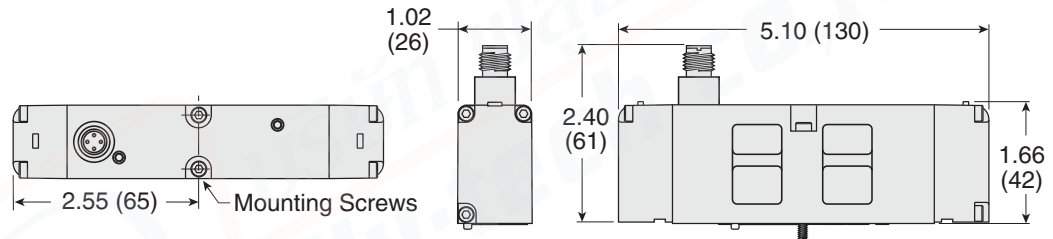
### DIMENSIONS

Inches (mm)

ISO Size 1



ISO Size 2.5



For additional information, and to assist you with piping and connectivity designs, our products are available in downloadable 2D drawings and 3D CAD models in a wide range of options including native formats. Please visit [www.rosscontrols.com](http://www.rosscontrols.com).

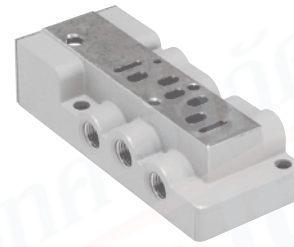
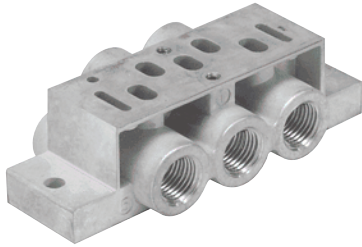
# Manifold Accessories

## SINGLE SUB-BASES WITH SIDE PORTS

ISO Size	Outlet Port	Model Number*	
		G Thread**	NPT Thread
02 (18mm)	1/8	RPL02-01-70	RPL02-01-80
01 (26mm)	1/4	RPS5511140P	RPS5511130P

\* Can be used for external, single, or double remote pilot.

\*\* G threaded model conforms to ISO 1179-1 w 228-1 thread.



## MANIFOLD BASES WITH END PORTS

### MANIFOLD MODEL NUMBER CONFIGURATOR

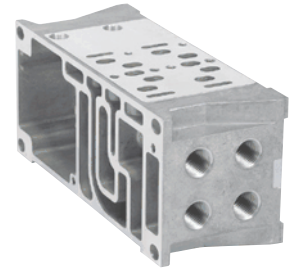
RPSHU11 5 4 0 1 P

ISO 15407-1

ISO 15407-1 Size	Port Size	
ISO Size 02 (18mm)	1/8 NPT	1
	1/8 G	2
ISO Size 01 (26mm)	1/4 NPT	3
	1/4 G	4

#### Gasket Options

1, 3, 5 Ports Open and Pilots Open	1
1, 3, 5 Ports Closed and Pilots Open	2
1 Port Closed, 3, 5 Ports Open and Pilots Closed	3
1 Port Open, 3, 5 Ports Closed and Pilots Open	4
1, 3, 5 Ports Open and Pilots Closed	5
1, 3, 5 Ports Closed and Pilots Closed	6
1 Port Closed, 3, 5 Ports Open and Pilots Closed	7
1 Port Open, 3, 5 Ports Closed and Pilots Open	8



## END STATION

### END STATION MODEL NUMBER CONFIGURATOR

RPSHU31 LO 1 0 P

#### Valve Type

Non Plug-in (Internal Pilot)	RPSHU31
Non Plug-in (External Pilot)	RPSHU3X

#### Right Hand End Station Ports

1/2 Exhaust and Inlet Ports	1
3/4 Exhaust and Inlet Ports	2

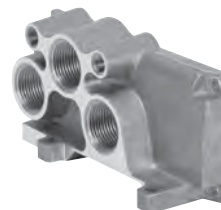
#### Thread Type

NPT	0
G	1*

\* G thread model conforms to ISO 1179-1 w 228-1 thread.

Left Hand End Station

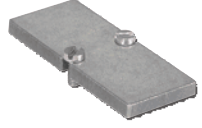
Hi-Flow Right Hand End Station\*



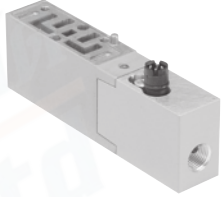
\* Hi-Flow Right Hand End Station included.




## BLANK STATION

Blank Station	ISO Size	Model Number*	
	02 (18mm)	RDX02BLK	
	01 (26mm)	RDX01BLK	
* Includes: Blank Station Plate, Gasket, and Mounting Bolts.			

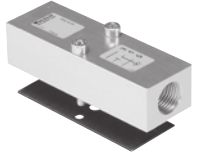
## INTERPOSED SUPPLY & EXHAUST MODULES

Interposed Modules	ISO Size	Outlet Port	Model Number*		
			G Thread	NPT Thread	
	02 (18mm)	Supply	RPS562601P	RPS562600P	
		Exhaust	RPS562701P	RPS562700P	
	01 (26mm)	Supply	RPS552601P	RPS552600P	
Exhaust		RPS552701P	RPS552700P		
* Used on Size 00 & Size 0 valves to provide a pressure or exhaust path to individual valves.					

## INTERPOSED FLOW CONTROL

Interposed Flow Control	ISO Size	Model Number*	
	02 (18mm)	RPS5642P	
	01 (26mm)	RPS5542P	
* Both adjustment screws are located on the 12 end of the unit. Interposed Flow Control mounts with its own studs, which means the valve uses standard bolts for mounting. Interposed Flow Control is not to be used as a shut off device and is not bubble tight when needles are fully turned down.			

## INTERMEDIATE AIR SUPPLY BASE

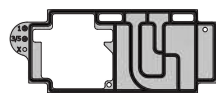
Intermediate Air Supply Base	ISO Size	Port Size	Thread Type	Model Number*	
	02 (18mm)	1/8	NPT	RD02P-01-80	
	01 (26mm)	1/4	NPT	RD01P-02-80	
* Includes: Air Supply Base, Gasket and Mounting Bolts.					

## GASKET KITS MANIFOLD TO MANIFOLD

Gasket Kits Manifold to Manifold	Pilots Status	Diagram Reference	Description	Kit Number
	Pilots Opened	1	Supply & Exhaust & Pilots Open	RPSHU11P
		2	Supply Closed, Exhaust & Pilots Open	RPSHU12P
		3	Supply & Exhaust Closed, Pilots Open	RPSHU13P
		4	Supply & Pilots Open, Exhaust Closed	RPSHU14P
	Pilots Blocked	5	Supply & Exhaust Open, Pilots Closed	RPSHU15P
		6	Supply & Pilots Closed, Exhaust Open	RPSHU16P
		7	Supply & Exhaust & Pilots Closed	RPSHU17P
		8	Supply Open, Exhaust & Pilots Closed	RPSHU18P



1 – Supply & Exhaust & Pilots Open



3 – Supply & Exhaust Closed, Pilots Open



5 – Supply & Exhaust Open, Pilots Closed



7 – Supply & Exhaust & Pilots Closed



2 – Supply Closed, Exhaust & Pilots Open



4 – Supply & Pilots Open, Exhaust Closed



6 – Supply & Pilots Closed, Exhaust Open

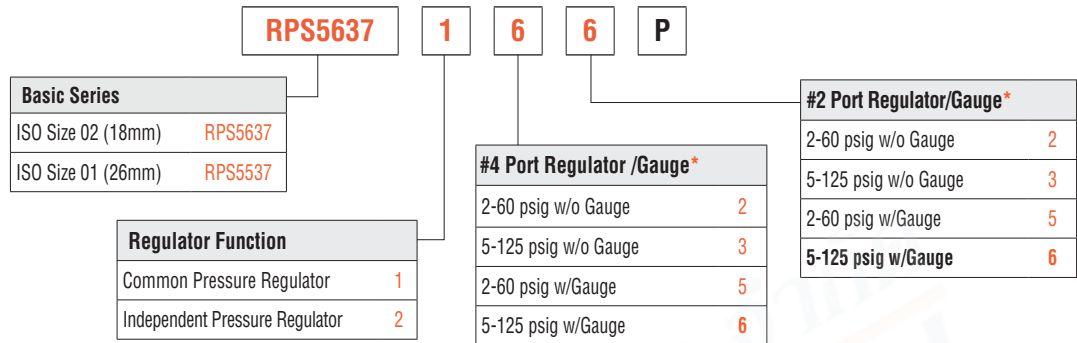


8 – Supply Open, Exhaust & Pilots Closed

# Accessories & Options

## INTERPOSED PRESSURE REGULATORS

### MODEL NUMBER CONFIGURATOR



Pressure  
Regulators

\* For Common Pressure Regulator Option, Regulator Gauge callout must be the same number for both Port #4 and Port #2. (Example: 166)

Remote Air Pilot Operated for hard-to-reach pressure control Unregulated Pilot Pressure to valve for consistent valve shifting regardless of pressure adjustment.


Dual Interposed Regulator  
Size 02 - 18mm



Single Interposed Regulator  
Size 01 - 26mm



## GAUGE ADAPTER

Gauge Adapter	Description	Model Number	
	Gauge Adapter	RPS5651160P	
	1/8" Female to 1/8" Female Coupling	R207P-2*	
	1/8" Male to 1/8" Male Long Nipple	RVS215PNL-2-15*	
	* Included in Gauge Adapter RPS5651160P.		
Included with all Size 02 Regulators. Both kits are required on all Size 01 & 02 Regulators when the Regulator is on the last Station on the Right (14) End.			

## SILENCERS

Silencers	Port Size	Thread Type	Model Number		Flow Avg. C <sub>v</sub>	Pressure Range psig (bar)
			R/Rp Thread	NPT Thread		
	1/8	Male	D5500A1003	5500A1003	1.2	0-290 (0-20) maximum
1/4	Male	D5500A2003	5500A2003	2.1		
3/8	Male	D5500A3013	5500A3013	2.7		



บริษัท ฟลูเทค จำกัด  
FLU-TECH CO.,LTD

845/3-4 หมู่ 3 ถ.เทพารักษ์ ต.เทพารักษ์ อ.เมือง จ.สมุทรปราการ 10270  
845/3-4 Thepharak RD., T.Thepharak, A.Muang, Samutprakarn 10270 THAILAND  
Tel. 0 2384 6060, Fax 0 2384 5701, Email : sales@flutech.co.th, www.flutech.co.th