

# MINIATURE Integral Filter/Regulators

# CFDR55M, CFDR56M Models Port Sizes: 1/8, 1/4



Model Shown: CFDR56M-2

- ◆ Filter and regulator consolidated in a single assembly.
- ◆ Inline mounting.
- ◆ 5- $\mu$ m-rated polyethylene filter element; optional sintered bronze elements.
- ◆ High-strength polycarbonate plastic filter bowl; optional aluminum bowl.
- ◆ Internal automatic drain; optional manual drain.
- ◆ Piston-type regulator (CFDR55M models) or diaphragm-type (CFDR56M models).
- ◆ Self-relieving regulator; non-relieving optional.
- ◆ Pressure gauge.
- ◆ NPTF port threads; optional BSPP threads.

## SPECIFICATIONS

### Ambient/Media Temperature:

40° to 125°F (4° to 52°C).

**Body:** Aluminum.

**Bowl:** 2-Ounce (60-ml) capacity polycarbonate plastic; optional aluminum bowl.

**Dome and Knob:** Glass Filled Nylon and Acetal.

### Filter Drain:

Internal automatic drain; optional manual drain.

**Filter Element:** 5- $\mu$ m-rated polyethylene; optional 5- $\mu$ m, 20- $\mu$ m, or 40- $\mu$ m sintered bronze.

**Fluid Media:** Compressed air.

### Inlet Pressure:

15 psig (1 bar) minimum with automatic drain.

Plastic bowl: 150 psig (10 bar) maximum.

Metal bowl: 200 psig (14 bar) maximum.

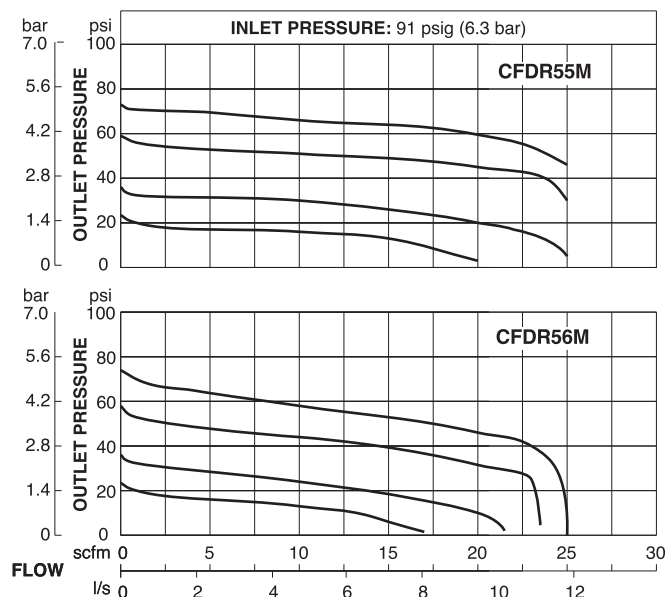
**Outlet Pressure:** Adjustable up to 100 psig (7 bar).

**Pressure Gauge:** 0 to 160 psig (11 bar); 1/8 NPT gauge ports front and rear.

**Panel Mounting:** 1-3/16 inch (30 mm) hole required.

**Seals:** Nitrile.

## FLOW CHARTS



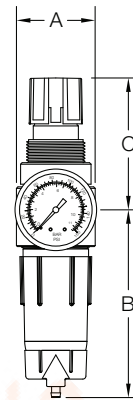
บริษัท ฟลูเทค จำกัด  
FLU - TECH CO., TD

845/3-4 หมู่ 3 ถ.เทพารักษ์ ต.เทพารักษ์ อ.เมือง จ.สมุทรปราการ 10270  
845/3-4 Thepharak RD., T. Thepharak, A. Muang, Samutprakan 10270 THAILAND  
Tel. 0 2384 6060, Fax 0 2384 5701, Email : sales@flutech.co.th, www.flutech.co.th

## DIMENSIONS inches (mm)

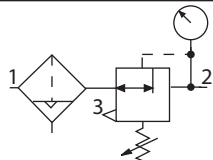
Bowl	Ports	A	B	C	Depth †	Weight †
						lb (kg)
Plastic	1/8, 1/4	1.6 (41)	3.9 (99)	2.6 (67)	1.6 (41)	0.53 (0.24)
Metal	1/8, 1/4	1.6 (41)	4.3 (109)	2.6 (67)	1.6 (41)	0.53 (0.24)

† Less gauge.



### ISO Filter/Regulator Symbol

Automatic Drain  
Self-relieving



## REPLACEMENT FILTER ELEMENT KITS

Element Type	Kit Number
5-µm polyethylene (Std element).....	KA130-27PE5
5-µm bronze.....	KA130-27E5
20-µm bronze.....	KA130-27E4
40-µm bronze.....	KA130-27E3

## ORDERING INFORMATION

Change the letters in the sample model number below to specify the filter/regulator you want.

**B C FD R55M - 2 Y P W**

### BOWL TYPE

Plastic bowl..... Leave Blank  
Metal bowl..... B

### FILTER DRAIN

Internal automatic drain..... FD  
Manual drain..... F

### REGULATOR TYPE

Piston type..... R55M  
Diaphragm type..... R56M

### PORT SIZE

1/8 NPTF..... 1  
1/4 NPTF..... 2

### PORT TYPE

NPTF threads..... Leave Blank  
BSPF threads..... W

### OPTIONS (More than one option can be chosen. Add in alphabetical order)

0-160 psig Gauge..... Leave Blank  
No psig Gauge..... NG  
Plastic nut..... P  
Metal nut..... PN  
Hex plastic mounting nut..... PE

### OPTIONS (More than one option can be chosen. Add in alphabetical order)

None..... Leave Blank  
Non-relieving..... A  
Small valve seat (provides lower flow, greater precision)..... C  
Metal dome (threaded)..... D  
Sintered bronze filter element:  
5-µm rating..... E5  
20-µm rating..... E4  
40-µm rating..... E3

### Adjusting springs:

0-125 psig (0-8.6 bar)..... H  
0-50 psig (0-3.4 bar)..... L  
0-8 psig (0-0.6 bar)..... L8  
0-15 psig (0-1.0 bar)..... L15  
0-30 psig (0-2.1 bar)..... L30

No Drain (lubricator bowl)..... LDC  
(Use Manual Drain Option under BOWL DRAIN section as well)

Tamper-resistant spinning knob (psig preset)..... MV(\*)

No gauge ports..... NP  
Viton seals..... V

\*Insert maximum limited pressure.

### MOUNTING BRACKETS

See page 320.

