



AIR FLOW CONTROL HEAVY-DUTY SHUTTLE VALVES

PRODUCT CATALOG



Shuttle Valves Heavy-Duty 19 Series

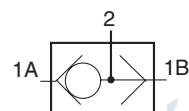
Product Overview



Shuttle Function

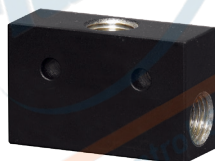
ROSS check valves function is to allow pressure in a line to be obtained from alternative sources.

Valve Schematic

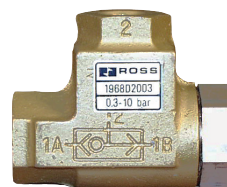


ROSS shuttle valves or double check valves have two inlets and one outlet. The first inlet to be pressurized is connected to the outlet, and the second inlet is then closed. Thus, a pneumatic device connected to the shuttle outlet can be operated by either of two control valves connected to the shuttle inlets. Automatically blocks one inlet passage when pressure is applied to the second inlet. Pressure to either inlet is channeled to one outlet port.

Standard



High-Flow



VALVE FEATURES

Poppet Design

Dirt-tolerant, self-cleaning poppet design.
Available in alternate materials for extreme temperature applications.

Tight-Seal Design

Provides efficiency and durability

Low Cracking Pressure

Air tight seal ensures no leakage from the valve

Positive Locking

Available in Low-Profile High-Capacity valves, prevents change of adjustment knob due to vibration or tampering

Rugged Construction

Made with corrosion-resistant materials

STANDARD SPECIFICATIONS

| | | | | |
|------------------------------|---------------------|---|---|--|
| GENERAL | Function | | Flow Control Shuttle Valves | |
| | Construction Design | | Poppet | |
| | Actuation | | Pneumatic | |
| | Mounting | Type | Inline | |
| | | Orientation | Any | |
| | Connection | | Threaded; G, NPT | |
| Minimum Operation Frequency | | Once per month, to ensure proper function | | |
| OPERATING CONDITIONS | Temperature | Ambient/Media | -40° to 175°F (-40° to 80°C) | |
| | | | <i>For temperatures below 40°F (4°C) air must be free of water vapor to prevent formation of ice.</i> | |
| | | | <i>For temperatures below -40°F (-40°C), consult ROSS.</i> | |
| | Flow Media | | Filtered air | |
| Operating Pressure | 150 psi (10.3 bar) | | Signal Pressure | Must be equal to or greater than inlet |
| | | | | |
| CONSTRUCTION MATERIAL | Valve Body | | Cast Aluminum | |
| | Poppet | | Acetal and Stainless Steel | |
| | Seals | | Buna-N | |

IMPORTANT NOTE: Please read carefully and thoroughly all of the **CAUTIONS, WARNINGS** on the inside back cover.

PRODUCT CREDENTIALS

| | |
|----------------------------|---|
| EAC Conformity Declaration | Canadian Registration Number (CRN) |
| EAC | Available for appropriately tested valves |

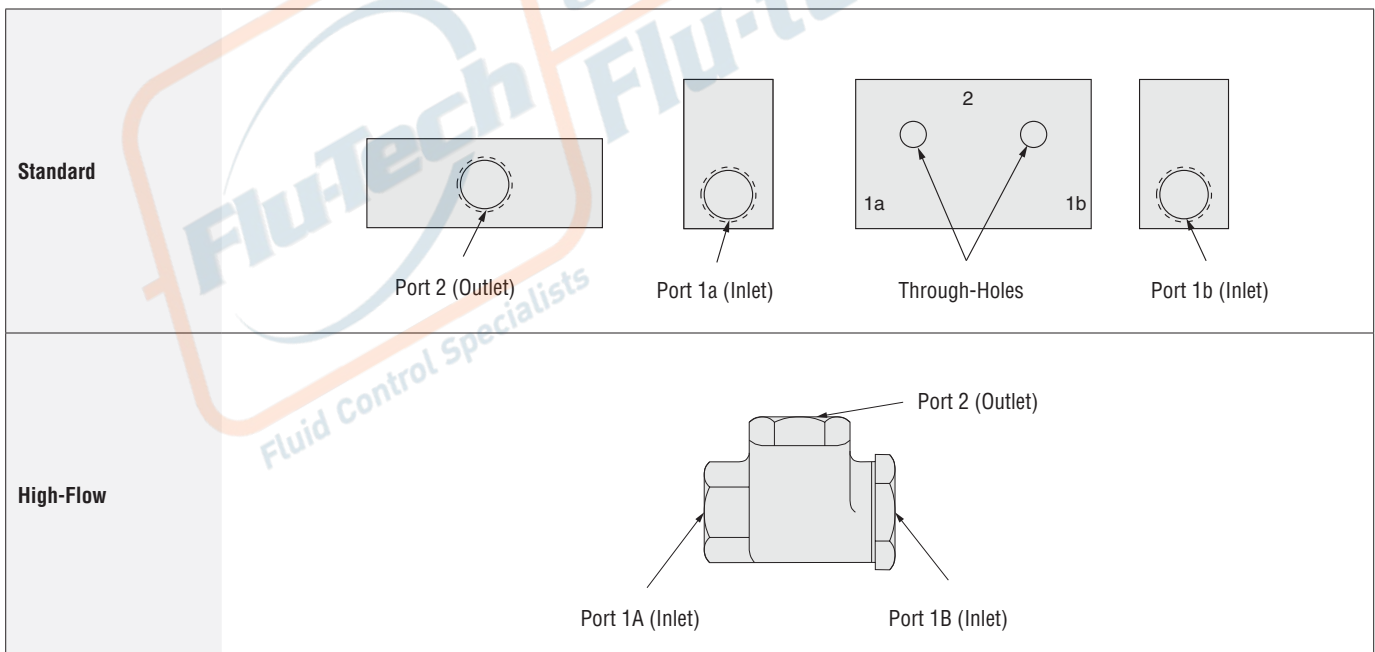


บริษัท ฟลูเทค จำกัด
FLU-TECH CO.,LTD

845/3-4 หมู่ 3 ถ.เทพารักษ์ ต.เทพารักษ์ อ.เมือง จ.สมุทรปราการ 10270
845/3-4 Thepharak RD., T.Thepharak, A.Muang, Samutprakarn 10270 THAILAND
Tel. 0 2384 6060, Fax 0 2384 5701, Email : sales@flutech.co.th, www.flutech.co.th

Ordering Information

| SHUTTLE VALVES | | | | | | 2-Way Valves | |
|----------------|--------|--------|------|--------------------|------------|--------------|-------------------|
| Valve Style | Size | | | Valve Model Number | | Flow C_v | Weight lb (kg) |
| | Port 1 | Port 2 | Body | G Thread | NPT Thread | | |
| Standard | 1/8 | 1/8 | 1/4 | D1968E1006 | 1968E1006 | 0.8 | 0.15 (0.07) |
| | 1/4 | 1/4 | 1/4 | D1968E2006 | 1968E2006 | 0.8 | 0.15 (0.07) |
| High-Flow | 1/4 | 1/4 | 3/8 | D1968D2003 | 1968D2003 | 2.0 | 0.8 (0.4) |
| | 3/8 | 3/8 | 3/8 | D1968D3003 | 1968D3003 | 3.0 | 0.8 (0.4) |



บริษัท ฟลูเทค จำกัด
FLU-TECH CO.,LTD

845/3-4 หมู่ 3 ถ.เทพารักษ์ ต.เทพารักษ์ อ.เมือง จ.สมุทรปราการ 10270
 845/3-4 Thepharak RD., T.Thepharak, A.Muang, Samutprakarn 10270 THAILAND
 Tel. 0 2384 6060, Fax 0 2384 5701, Email : sales@flutech.co.th, www.flutech.co.th

| DIMENSIONS | | Inches (mm) |
|--|--|-------------|
| Body Size 1/4 | | |
| Standard | | |
| | | |
| <p>For additional information, and to assist you with piping and connectivity designs, our products are available in downloadable 2D drawings and 3D CAD models in a wide range of options including native formats, visit www.rosscontrols.com.</p> | | |

