



AIR FLOW CONTROL HEAVY-DUTY QUICK EXHAUST VALVES

PRODUCT CATALOG



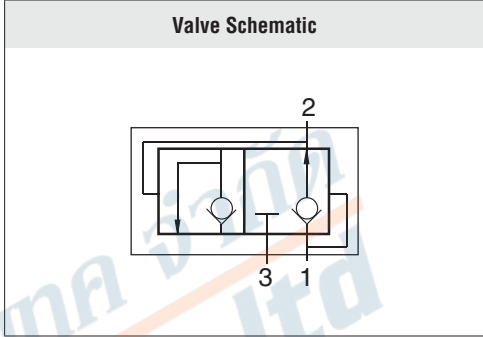
Quick Exhaust Heavy-Duty Valves 18 Series

Product Overview

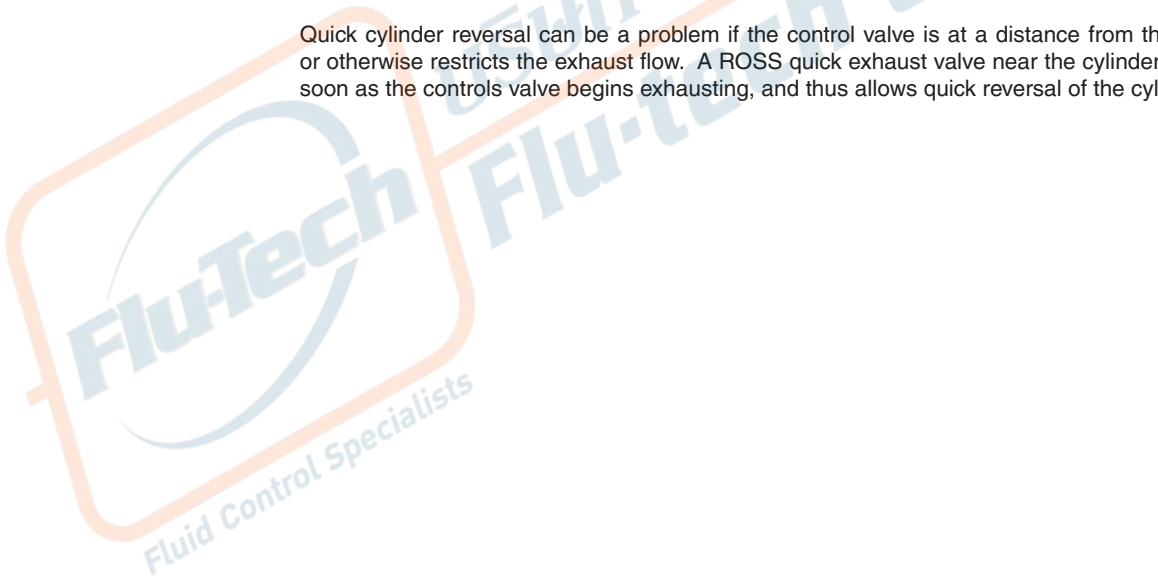


Quick Exhaust Function

ROSS quick exhaust valve function is to provide a rapid exhaust of controlled air when placed directly onto an air cylinder after the control valve.



Quick cylinder reversal can be a problem if the control valve is at a distance from the cylinder or otherwise restricts the exhaust flow. A ROSS quick exhaust valve near the cylinder opens as soon as the controls valve begins exhausting, and thus allows quick reversal of the cylinder.



VALVE FEATURES

Poppet Design

Dirt-tolerant, self-cleaning poppet design.
Available in alternate materials for extreme temperature applications.

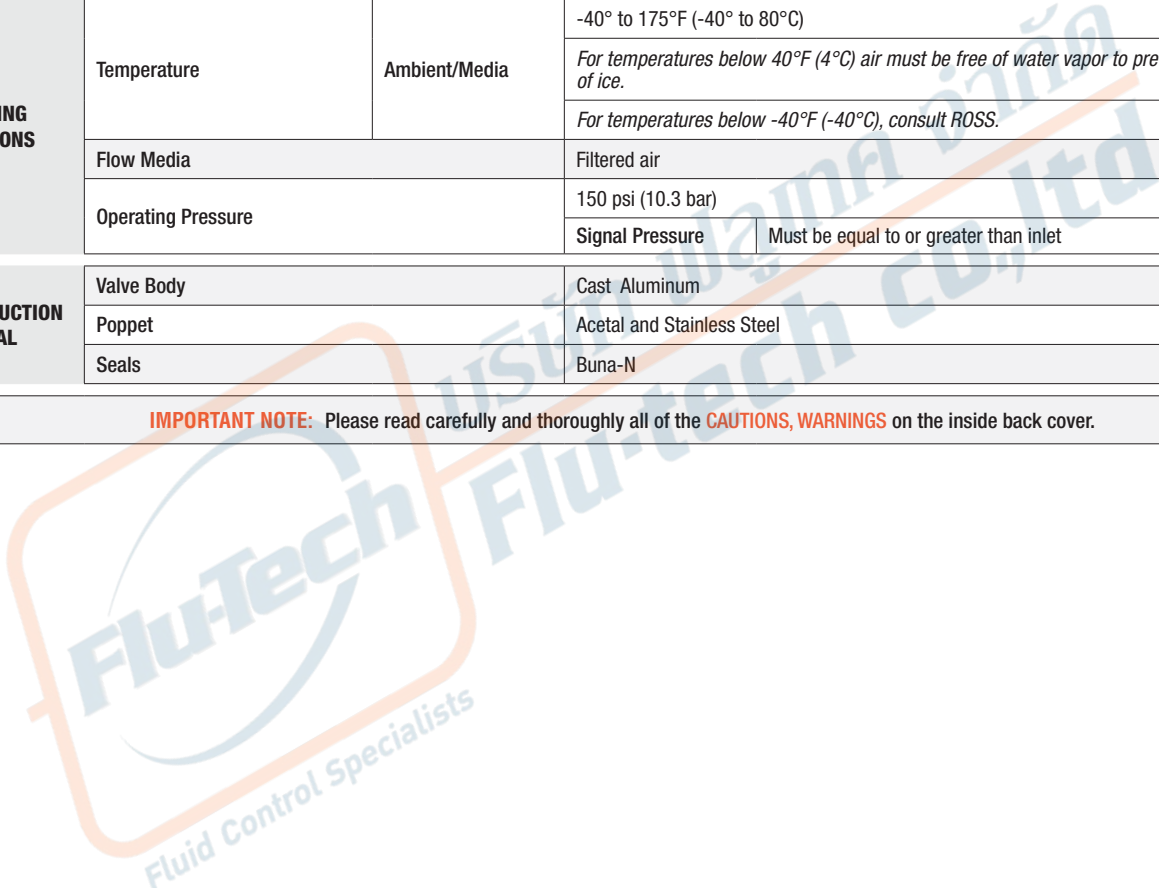
Tight-Seal Design

Provides efficiency and durability

Rugged Construction

Made with corrosion-resistant materials

STANDARD SPECIFICATIONS			
GENERAL	Function		Flow Control
	Construction Design		Poppet
	Actuation		Pneumatic
	Mounting	Type	Inline
		Orientation	Any
	Connection		Threaded; G, NPT
Minimum Operation Frequency		Once per month, to ensure proper function	
OPERATING CONDITIONS	Temperature	Ambient/Media	-40° to 175°F (-40° to 80°C) <i>For temperatures below 40°F (4°C) air must be free of water vapor to prevent formation of ice.</i>
			<i>For temperatures below -40°F (-40°C), consult ROSS.</i>
	Flow Media		Filtered air
	Operating Pressure	150 psi (10.3 bar)	
Signal Pressure		Must be equal to or greater than inlet	
CONSTRUCTION MATERIAL	Valve Body		Cast Aluminum
	Poppet		Acetal and Stainless Steel
	Seals		Buna-N
IMPORTANT NOTE: Please read carefully and thoroughly all of the CAUTIONS, WARNINGS on the inside back cover.			

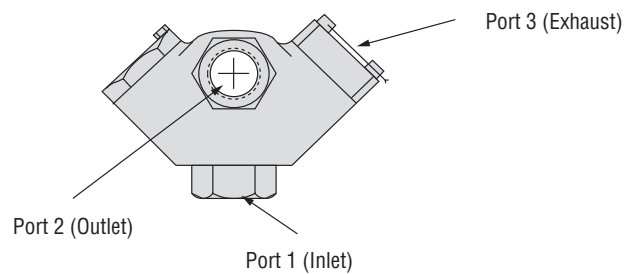
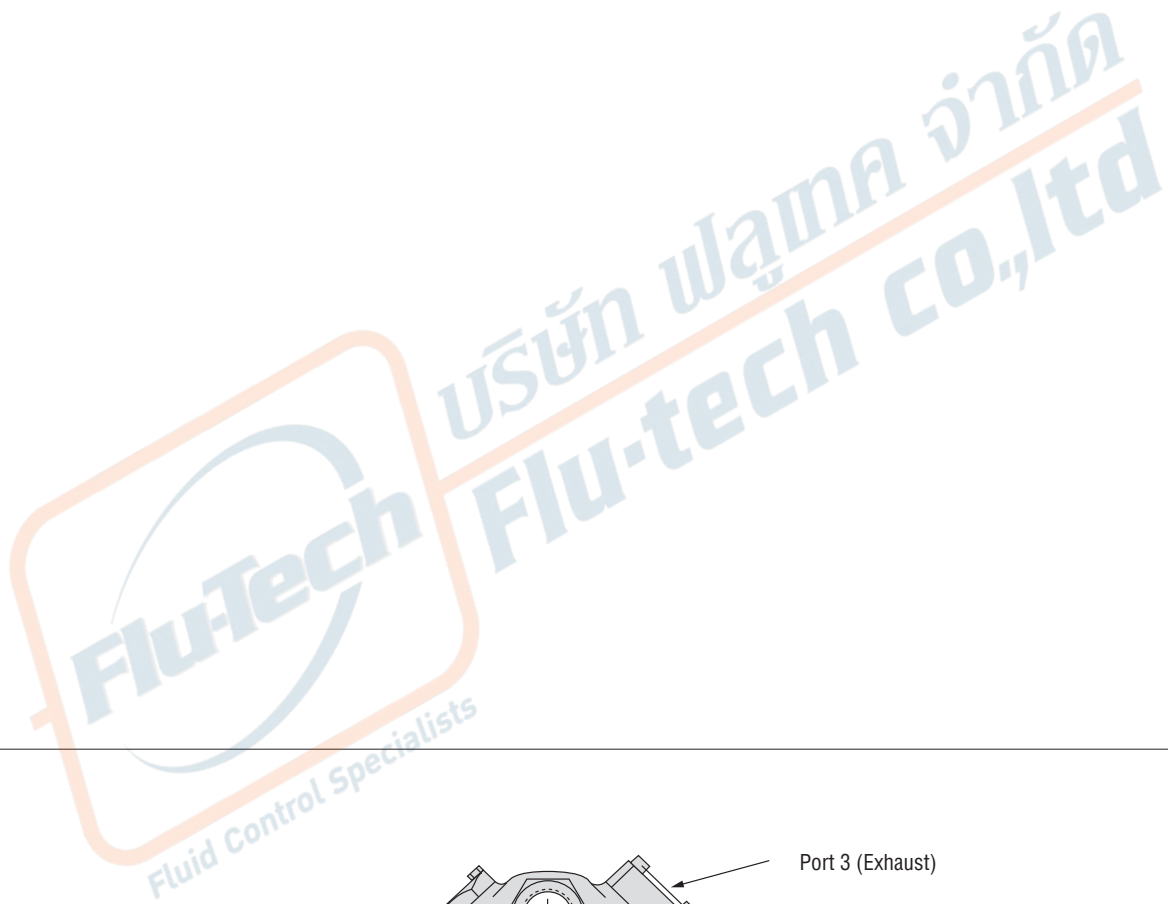


PRODUCT CREDENTIALS	
EAC Conformity Declaration 	Canadian Registration Number (CRN) Available for appropriately tested valves



Ordering Information

QUICK EXHAUST VALVES								3-Way Valves	
Size				Valve Model Number		Flow C_v		Weight lb (kg)	
Port 1	Port 2	Port 3	Body	NPT Thread	G Thread	1-2	2-3		
3/8	3/8	1/2	1/2	D1868A3005	1868A3005	0.8	3.4	1.0 (0.5)	
1/2	1/2	1/2	1/2	D1868A4005	1868A4005	0.8	3.4	1.0 (0.5)	
3/4	3/4	1	1	D1868A5005	1868A5005	2.0	10	2.5 (1.1)	
1	1	1	1	D1868A6005	1868A6005	3.0	10	2.5 (1.1)	



บริษัท ฟลูเทค จำกัด
FLU-TECH CO.,LTD

845/3-4 หมู่ 3 ถ.เทพารักษ์ ต.เทพารักษ์ อ.เมือง จ.สมุทรปราการ 10270
845/3-4 Thepharak RD., T.Thepharak, A.Muang, Samutprakarn 10270 THAILAND
Tel. 0 2384 6060, Fax 0 2384 5701, Email : sales@flutech.co.th, www.flutech.co.th

DIMENSIONS		Inches (mm)
Body Size 1/2		
Body Size 1		
<p>For additional information, and to assist you with piping and connectivity designs, our products are available in downloadable 2D drawings and 3D CAD models in a wide range of options including native formats, visit www.rosscontrols.com.</p>		

