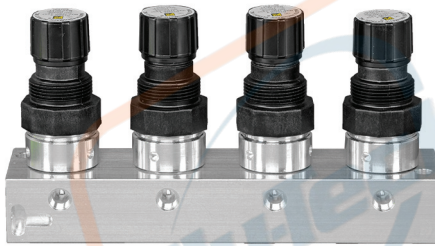


# Series RT55 and RT56 Miniature manifold mount and manifold regulator.

## RT55, RT56, R\*T55, R\*T56 Models Port Sizes: 1/4



Model Shown: RT56M-4



Model Shown: R4T56M-2

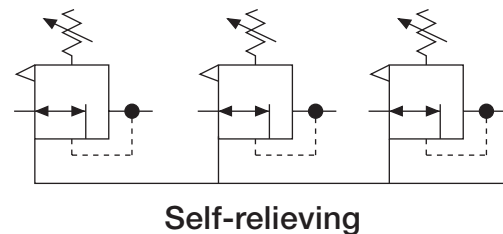
### FEATURES:

- ◆ Manifold assemblies are available in 1, 2, 3 or 4 port regulator assemblies. They can be assembled together for longer in-line regulator assemblies.
- ◆ Piston-type design (RT55M models) or diaphragm-type (RT56M models).
- ◆ Self relieving design: Non-relieving optional.
- ◆ NPTF port threads: optional BSPP threads on manifold R\*T55M and R\*T56M models.

### ISO SYMBOLS - Individual regulator



### ISO SYMBOLS - Manifold regulator



### SPECIFICATIONS

#### Ambient/Media Temperature:

40° to 125°F (4° to 52°C).

**Body:** Aluminum.

**Dome and Knob:** Glass Filled Nylon and Acetal.

**Fluid Media:** Compressed air and inert gas.

**Inlet Pressure:** 300 psig (21 bar) maximum.

**Outlet Pressure:** Adjustable up to 100 psig (7 bar);

Optional adjusting springs.

**Panel Mounting:** 1-3/16 inch (30 mm) hole required.

**Seals:** Nitril, Optional Viton.

### MANIFOLD KITS:



Screw assembly kit: A33-707



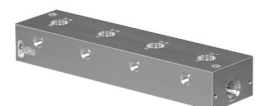
An assembled  
R1T56M-2 and R2T56M-2



1 Port manifold:  
33-700-1-222



2 Port manifold:  
33-700-2-222



4 Port manifold:  
33-700-4-222



บริษัท ฟลูเทค จำกัด  
FLU-TECH CO.,LTD

845/3-4 หมู่ 3 ถ.เทพารักษ์ ต.เทพารักษ์ อ.เมือง จ.สมุทรปราการ 10270

845/3-4 Thepharak RD., T.Thepharak, A.Muang, Samutprakarn 10270 THAILAND  
Tel. 0 2384 6060, Fax 0 2384 5701, Email : sales@flutech.co.th, www.flutech.co.th

## ORDERING INFORMATION FOR INDIVIDUAL TOP MOUNTED MANIFOLD REGULATOR

Change the letters in the sample model number below to specify the **individual** mounted regulator you want.

**RT5 5 M- 4 A P**

### REGULATOR TYPE:

Piston ..... 5  
Diaphragm ..... 6

### PORT SIZE:

1/2-UNF (Top mounted threads) ..... 4

### OPTIONS 2:

None: ..... Leave Blank  
Plastic mounting nut ..... P  
Hex mounting nut ..... PE

**OPTIONS 1:** (More than one can be chosen. Add in alphabetical order).

None ..... Leave Blank  
Relieving ..... Leave Blank  
Non-relieving ..... A  
Small valve seat ..... C  
Metal valve seat ..... C2  
Metal dome ..... D  
Viton seals and O-rings ..... V

### SPRINGS:

0-8 PSIG (0.6 BAR) ..... L8  
0-15 PSIG (0-1 BAR) ..... L15  
0-30 PSIG (0-2.1 BAR) ..... L30  
0-50 PSIG (0-3 BAR) ..... L  
0-100 PSIG (0-7 BAR) ..... Leave Blank  
0-125 PSIG (0-8.6 BAR) ..... H

## ORDERING INFORMATION FOR MANIFOLD MOUNTED REGULATOR

Change the letters in the sample model number below to specify the **manifold** mounted regulator(s).

**R 4 T5 5 M- 2 A P W**

### MANIFOLD REGULATOR(S):

1 RT\* regulator attached to 1 port manifold .... 1  
2 RT\* regulator attached to 2 port manifold .... 2  
3 RT\* reg attached to 1&2 port manifold ..... 3  
4 RT\* regulator attached to 4 port manifold .... 4

### REGULATOR TYPE:

Piston ..... 5  
Diaphragm ..... 6

### PORT SIZE:

1/4-NPTF ..... 2

### THREAD TYPE:

NPTF ..... Leave Blank  
BSPP ..... W

### OPTIONS 2:

None: ..... Leave Blank  
Metal mounting nut ..... PN  
Hex mounting nut ..... PE

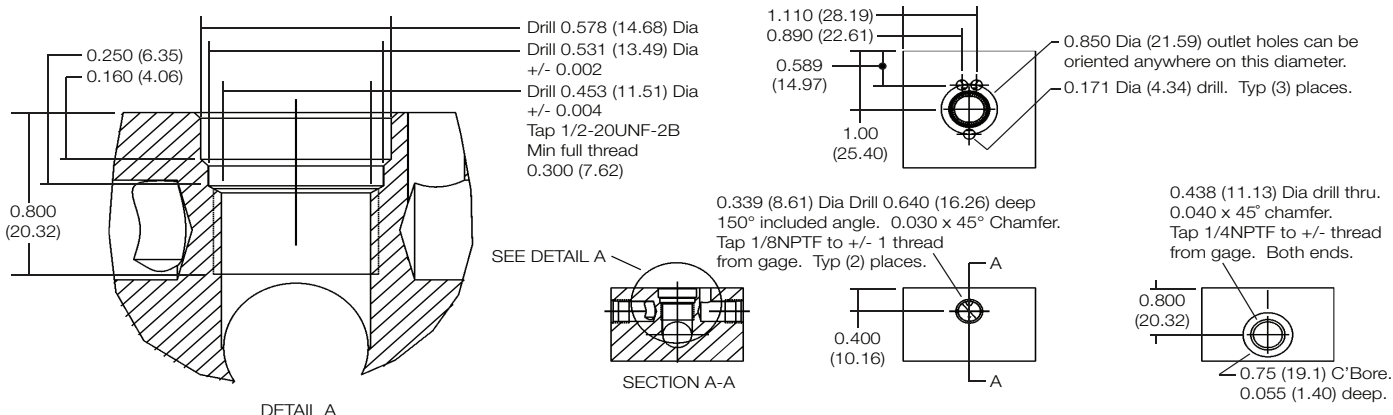
**OPTIONS 1:** (More than one can be chosen. Add in alphabetical order).

None ..... Leave Blank  
Relieving ..... Leave Blank  
Non-relieving ..... A  
Small valve seat ..... C  
Metal valve seat ..... C2  
Metal dome ..... D  
Viton seals and O-rings ..... V

### SPRINGS:

0-8 PSIG (0.6 BAR) ..... L8  
0-15 PSIG (0-1 BAR) ..... L15  
0-30 PSIG (0-2.1 BAR) ..... L30  
0-50 PSIG (0-3 BAR) ..... L  
0-100 PSIG (0-7 BAR) ..... Leave Blank  
0-125 PSIG (0-8.6 BAR) ..... H

## DIMENSIONS FOR MANIFOLD MOUNT REGULATOR INTERFACE:



**บริษัท ฟลูเทค จำกัด**  
**FLU-TECH CO.,LTD**

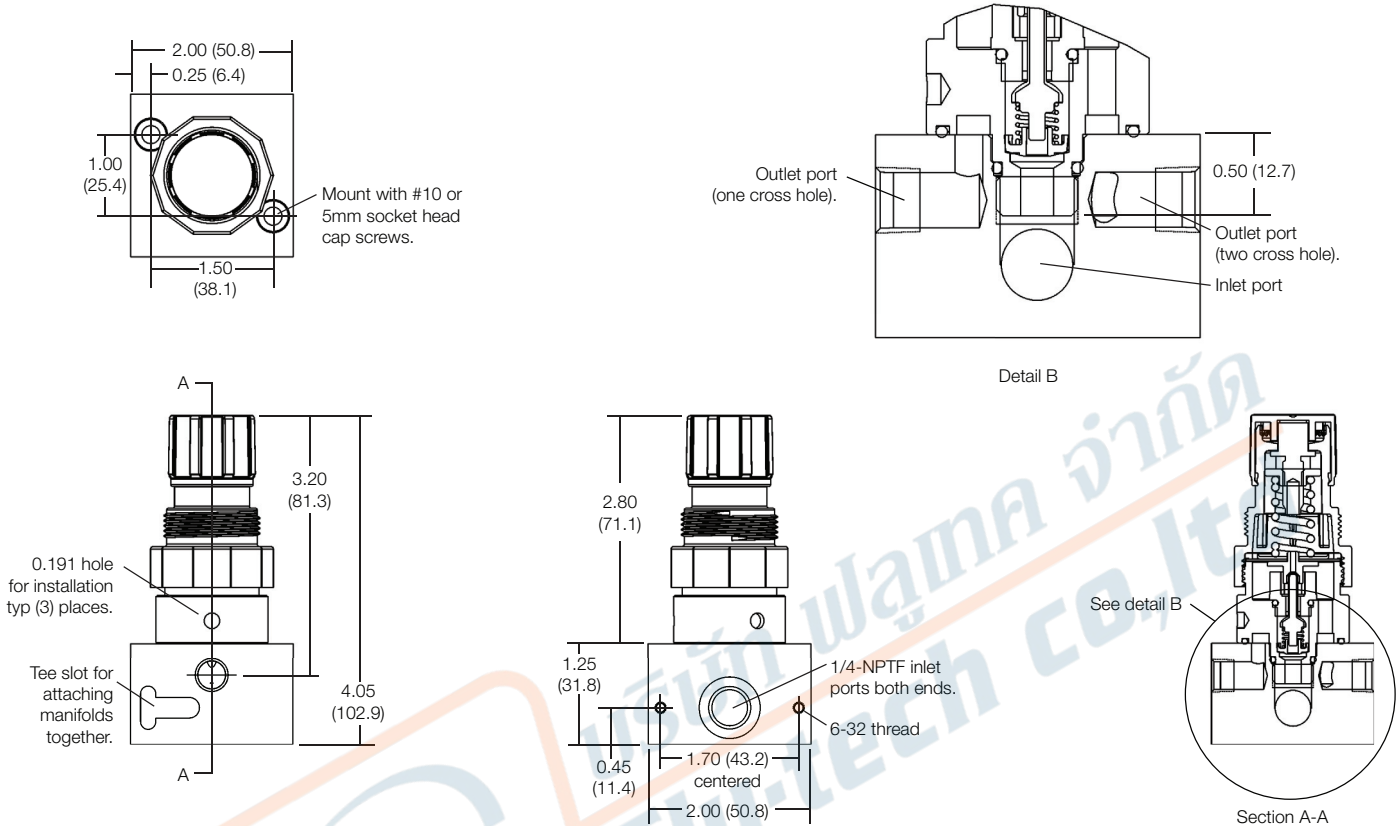
845/3-4 หมู่ 3 ถ.เทพารักษ์ ต.เทพารักษ์ อ.เมือง จ.สมุทรปราการ 10270

845/3-4 Thepharak RD., T.Thepharak, A.Muang, Samutprakarn 10270 THAILAND

Tel. 0 2384 6060, Fax 0 2384 5701, Email : sales@flutech.co.th, www.flutech.co.th

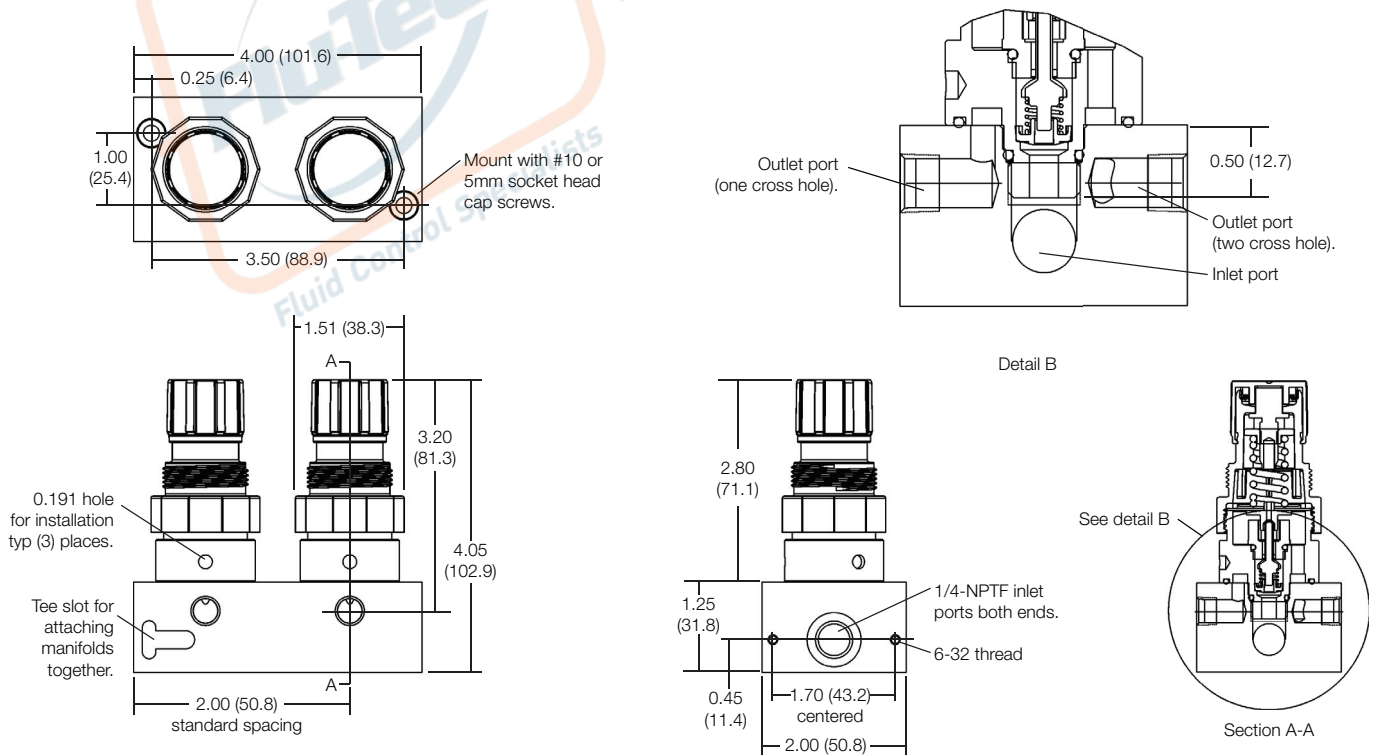
### DIMENSIONS FOR R1T55M / R1T56M

Manifold regulator: inches (mm).



### DIMENSIONS FOR R2T55M / R2T56M

Manifold regulator: inches (mm).



**บริษัท ฟลูเทค จำกัด**  
**FLU-TECH CO.,LTD**

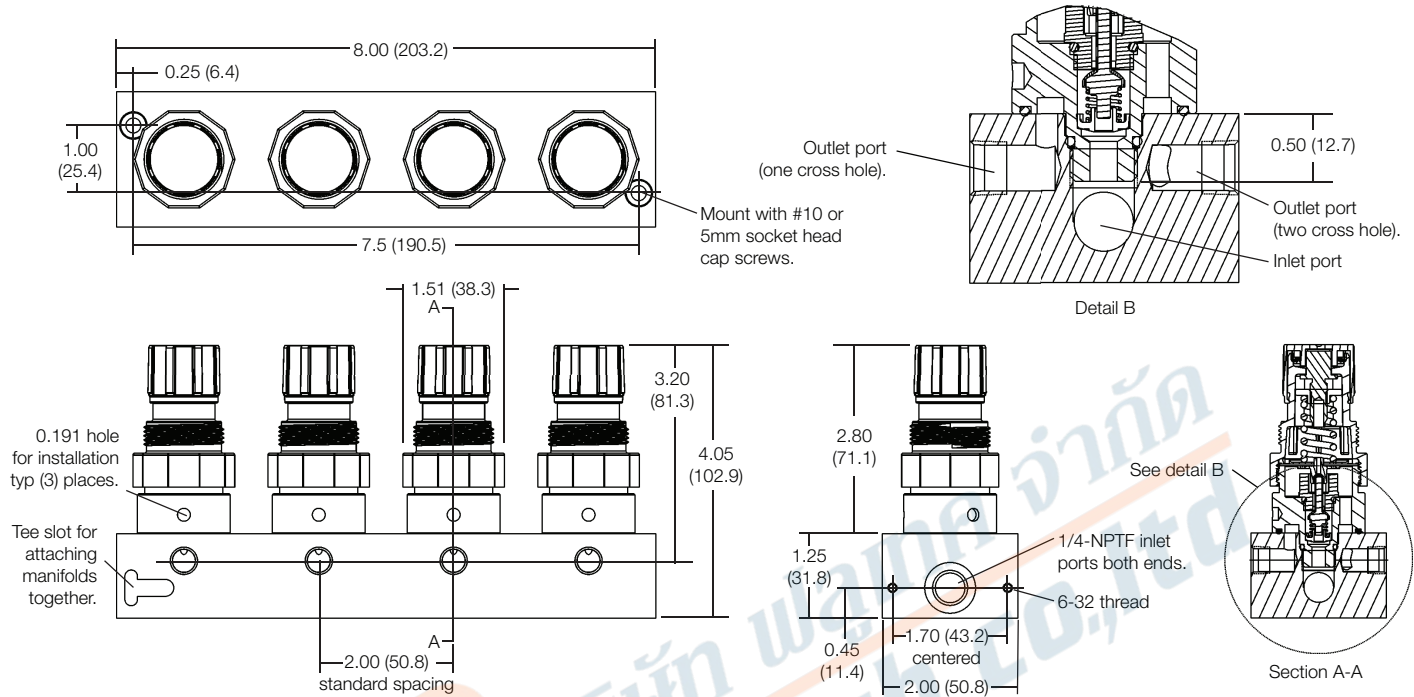
845/3-4 หมู่ 3 ถ.เทพารักษ์ ต.เทพารักษ์ อ.เมือง จ.สมุทรปราการ 10270

845/3-4 Thepharak RD., T.Thepharak, A.Muang, Samutprakarn 10270 THAILAND

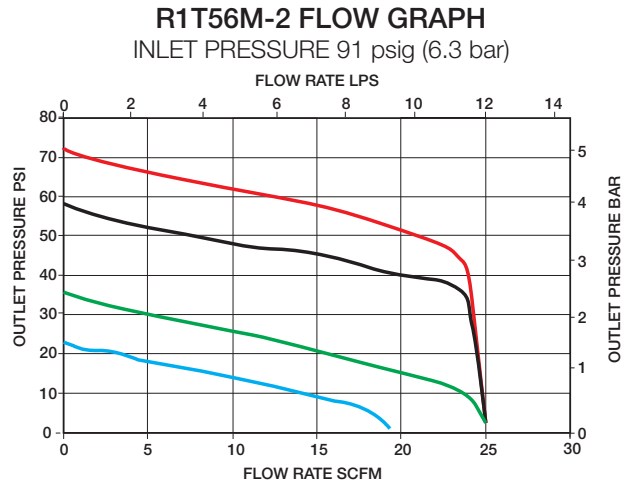
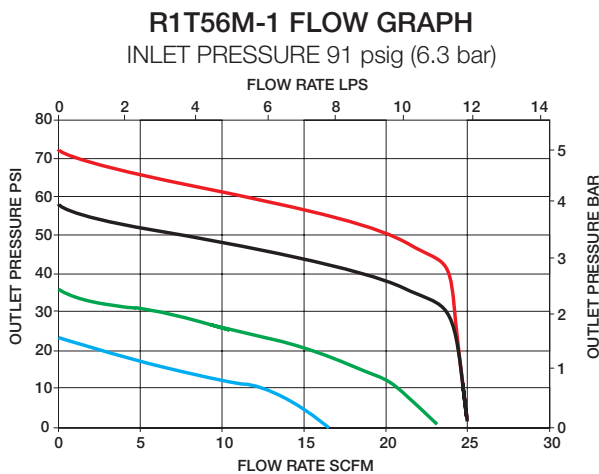
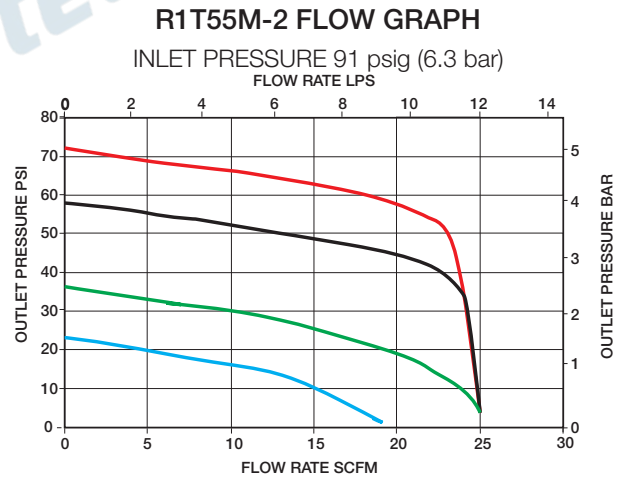
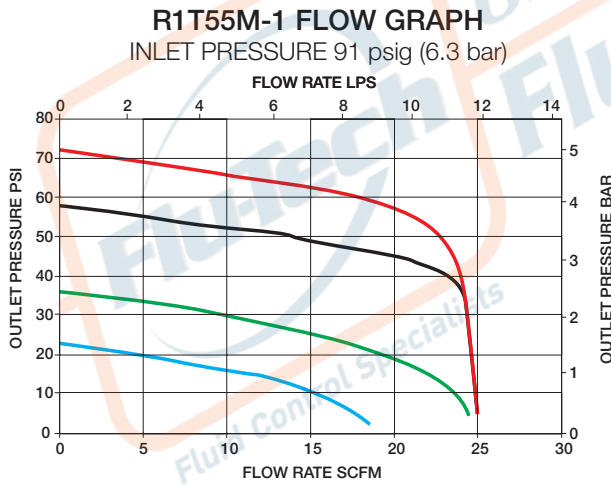
Tel. 0 2384 6060, Fax 0 2384 5701, Email : sales@flutech.co.th, www.flutech.co.th

**DIMENSIONS FOR R4T55M / R4T56M**

Manifold regulator: inches (mm).



**FLOW GRAPHS**



**บริษัท ฟลูเทค จำกัด**  
**FLU-TECH CO.,LTD**

845/3-4 หมู่ 3 ถ.เทพารักษ์ ต.เทพารักษ์ อ.เมือง จ.สมุทรปราการ 10270

845/3-4 Thepharak RD., T.Thepharak, A.Muang, Samutprakarn 10270 THAILAND

Tel. 0 2384 6060, Fax 0 2384 5701, Email : sales@flutech.co.th, www.flutech.co.th