

# PRODUCT DATA SHEET INFORMATION



## PROPORTIONAL VALVE — PLUNGER CONTROL, COUNTERBLOW, FINAL BLOW

Poppet valve with force-balanced valve elements, one valve element being used for pressurizing the downstream system.

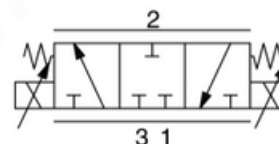
### Features:

- Proportional pressurizing and exhausting
- Poppet construction
- "Plug-and-play" concept
- Excellent hysteresis
- Long service life
- Various interfaces available
- Digital control
- Self-adjusting zero-point
- Customer-specific electrical supply

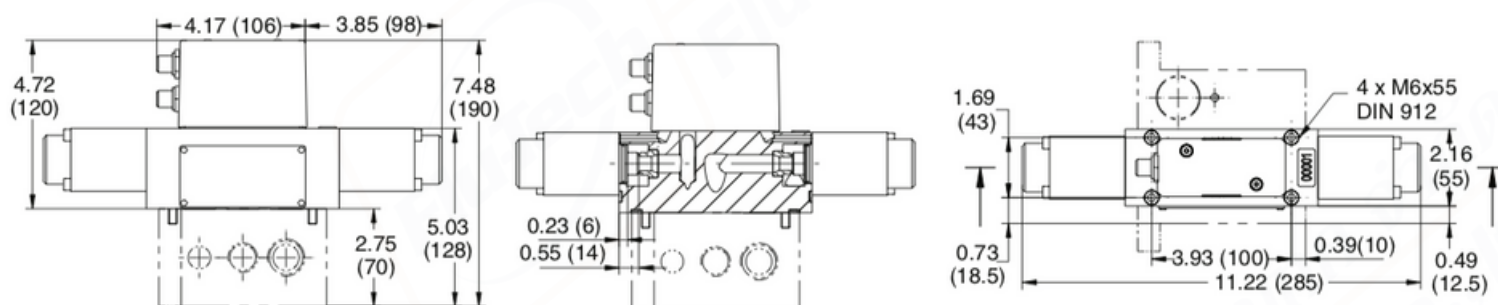


IP 65,  
water-resistant

<b>Model Number</b>	<b>01-SOP-03-00-0-0</b>
For other models, contact ROSS.	



### Dimensions - inches (mm)



### Standard Specifications:

**Construction:** Poppet.  
**Actuator:** Proportional solenoid.  
**Ambient Temperature:** 32° to 158° F (0° to 70° C).  
**Flow Media:** Filtered air.

**Inlet Pressure:** 80 psi (5.5 bar) max.100.\*  
**Operating Pressure:** 0 to 50 (0 to 3.5 bar) max.\*  
 \*For other pressures consult ROSS.

ROSS VALVES  
FOR IS GLASS MACHINES:

- 21-Valve Block • Blow Head On/Off • Blow Mold Vacuum • Blow Pistol • Cartridge Valve, Open or Closed
- Counterblow Vacuum or Hi-Lo Pressure • Final Blow, Settle Blow, Finish Cooling, Blow Off
- Mold Open/Close • Plunger Up or Down, Cooling • Proportional Valve • Pusher

## CONTACT INFORMATION



02-384-6060



SALES@FLUTECH.CO.TH



HTTPS://FLUTECH.CO.TH/



845/3-4, MHOO 3, THEPARAK RD., T. THEPARAK, A. MUANG, SAMUT PRAKAN, 10270, THAILAND

