

High-Flow VANGUARD FRLs Filter-Regulator-Lubricators

FDRL180 Models Port Sizes: 3/4, 1



Model Shown: FDRL180-6

SPECIFICATIONS

- Ambient/Media Temperature:** (without lockout valve)
Plastic Bowl, all drain types: 40° to 125°F (4° to 52°C).
Metal Bowl, manual & automatic drains: 40° to 175°F (4° to 79°C).
Metal Bowl, float drains: 40° to 150°F (4° to 66°C).
- Bowls:** 16-Ounce (480-ml) capacity aluminum bowls with sight glass or polycarbonate plastic bowls with steel shatterguard.
- Bowl Rings:** Aluminum.
- Filter Drain:**
Internal automatic drain; optional manual drain, internal float drain, external Hydro-Jector drain, or Warrior electronic drain.
- Filter Element:** 5- μ m-rated polyethylene; optional 5- μ m, 20- μ m, or 40- μ m sintered bronze.
- Fluid Media:** Compressed air.
- Heads:** Aluminum.
- Inlet Pressure:**
Minimum: 15 psig (1 bar) with automatic drain, 30 psig (2 bar) with internal float drain.
Plastic bowls: 150 psig (10 bar) maximum.
Metal bowls: 200 psig (14 bar) maximum.
- Oil Adjustment:** External; tamper-resistant.
- Outlet Pressure:** Adjustable up to 100 psig (7 bar).
- Pressure Adjustment Locking Key:** Removable.
- Pressure Gauge:** 0 to 200 psig (14 bar); 1/4 NPT gauge ports front and rear.
- Seals:** Nitrile.

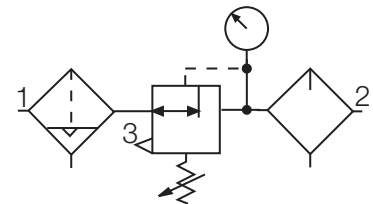
- ◆ Individual filter (**FD100**); piston-type regulator (**R180M**); wick-feed lubricator (**L100**)
- ◆ Inline mounting.
- ◆ 5- μ m-rated polyethylene filter element; optional sintered bronze elements.
- ◆ Metal bowls with clear nylon sight glass or polycarbonate plastic bowls with steel shatterguard.
- ◆ Internal automatic filter drain. Optional manual drain, internal float drain, external Hydro-Jector drain, or Warrior electronic drain.
- ◆ Self-relieving regulator; non-relieving optional.
- ◆ Pressure gauge
- ◆ NPTF port threads; optional BSPP threads.

AIR FLOW DATA

See Flow Charts for individual assembly components on preceding pages.

ISO FRL Symbol

Automatic Drain
Self-relieving



REPLACEMENT FILTER ELEMENT KITS

Element Type	Kit Number
5- μ m polyethylene (Std element).....	KA109-3PE
5- μ m bronze	KA109-03E5
20- μ m bronze	KA109-03E4
40- μ m bronze	KA109-03E3

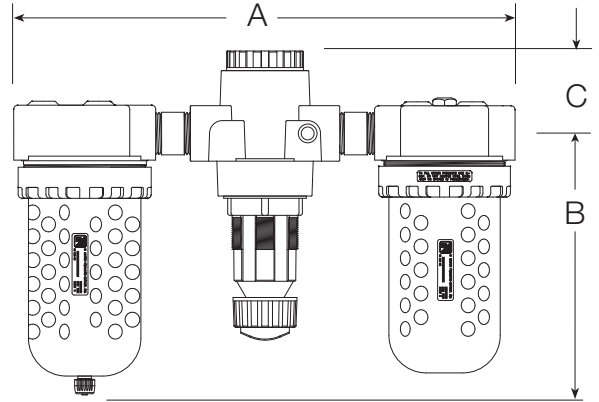


บริษัท ฟลูเทค จำกัด
FLU-TECH CO.,LTD

845/3-4 หมู่ 3 ถ.เทพารักษ์ ต.เทพารักษ์ อ.เมือง จ.สมุทรปราการ 10270
845/3-4 Thepharak RD., T.Thepharak, A.Muang, Samutprakarn 10270 THAILAND
Tel. 0 2384 6060, Fax 0 2384 5701, Email : sales@flutech.co.th, www.flutech.co.th

DIMENSIONS inches (mm)

DIMENSIONS inches (mm)				Weight
A	B	C	Depth	lb (kg)
15.8 (401)	8.0 (204)	1.2 (31)	4.3 (108)	8.00 (3.64)



ORDERING INFORMATION

Change the letters in the sample model number below to specify the FRL you want.

NOTE: For model numbers longer than 15 characters, please consult Master Pneumatic.

DIFFERENTIAL PRESSURE GAUGE for COALESCENT FILTER

Consult factory for differential pressure gauges on filters or no gauge on coalescing filters.

No coalescent filter	Leave Blank
Tapped ports on head, small gauge	S
Tapped ports on head, large gauge	Leave Blank
Tapped ports on head, large gauge	E
with normally OPEN reed switch.	
Tapped ports on head, large gauge	E2
with normally CLOSED reed switch.	

REGULATOR

No Regulator	0
Regulator	8

BOWL TYPE for FILTER, COALESCENT FILTER, and LUB

Metal bowls	B
Plastic bowls	Leave Blank

FILTER DRAIN

No filter	Leave blank
Internal automatic drain	FD
Manual drain	F
Internal float drain (plastic stem)	F5A
(Must be ordered with plastic bowl option under BOWL TYPE).	
Internal float drain (brass stem)	F6A
(Must be ordered with metal bowl option under BOWL TYPE).	
External Hydro-Jector drain;	FE
(Must be ordered with metal bowl option under BOWL TYPE).	
Warrior electronic drain;	F2A
(Must be ordered with metal bowl option under BOWL TYPE).	

COALESCENT FILTER DRAIN

No coalescing filter	Leave blank
Internal automatic drain	FCD
Manual drain	FC
Internal float drain (plastic stem)	FC5A
(Must be ordered with plastic bowl option under BOWL TYPE).	
Internal float drain (brass stem)	FC6A
(Must be ordered with metal bowl option under BOWL TYPE).	
External Hydro-Jector drain;	FCE
(Must be ordered with metal bowl option under BOWL TYPE).	
Warrior electronic drain;	FC2A
(Must be ordered with metal bowl option under BOWL TYPE).	

PORT TYPE

3/4 NPTF	6
1 NPTF	8

OPTIONS (More than one option can be chosen. Add in alphabetical order.)

None	Leave Blank
0-200 psig Gauge	Leave Blank
Mounting nut	P

PORT TYPE

NPTF	Leave Blank
BSPF	W

OPTIONS (More than one option can be chosen. Add in alphabetical order.)

None	Leave Blank
Non-relieving regulator	A

Polyethylene filter element:

5-µm rating	Leave Blank
-------------------	-------------

Bronze filter element:

5-µm rating	E5
20-µm rating	E4
40-µm rating	E3

Coalescent filter element:

0.3-µm rating	Leave Blank
0.01-µm rating	E8

Springs - regulator: (0-100 psig standard)

For optimum performance operating pressure should fall approximately in the middle of the spring range.

0-150 psig (0-10 bar)	H**
0-50 psig (0-3.4 bar)	L
0-20 psig (0-1.4 bar)	L20

No bowl drain for filter and LDC
coalescent filter (1/4 NPT female port instead. Also use 'B' option under '**BOWL TYPE for FILTER, COALESCENT FILTER, and LUB**' section.)

Metal regulator dome	MD
No regulator gauge for	NG
Quick-fill Q-cap for lubricator	Q
Tee handle for regulator	T

** H option spring includes metal dome.

LUBRICATOR

No Lubricator	Leave Blank
Lubricator	L

REGULATOR

No Regulator	Leave Blank
Regulator	R

B FD FC R L 1 8 0 S - 6 A P W



บริษัท ฟลูเทค จำกัด
FLU-TECH CO.,LTD

845/3-4 หมู่ 3 ถ.เทพารักษ์ ต.เทพารักษ์ อ.เมือง จ.สมุทรปราการ 10270

845/3-4 Thepharak RD., T.Thepharak, A.Muang, Samutprakarn 10270 THAILAND

Tel. 0 2384 6060, Fax 0 2384 5701, Email : sales@flutech.co.th, www.flutech.co.th