



**Restrictor, Restrictor silencer, Flow regulator, Shuttle valve, Quick exhaust valve**

- For the regulation of the compressed air supply to consumers

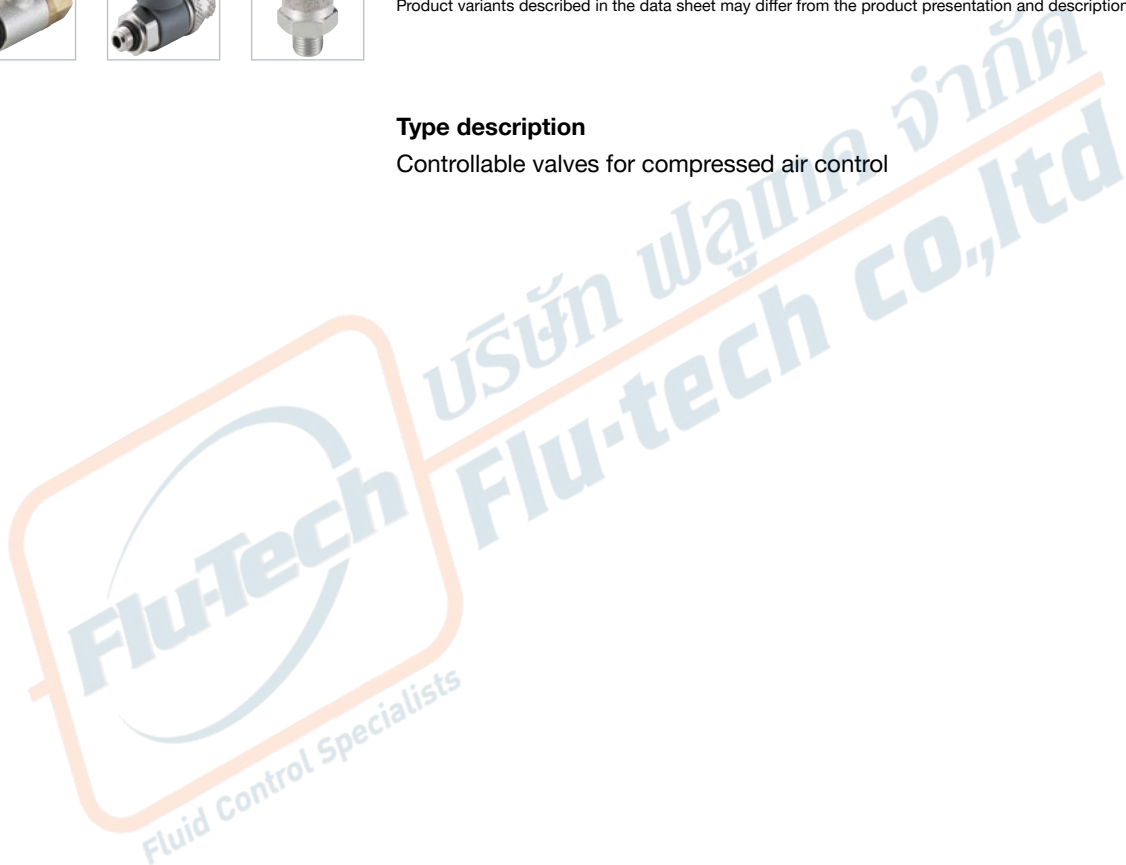


Product variants described in the data sheet may differ from the product presentation and description.

**Type description**

Controllable valves for compressed air control

DTS 1000422051 EN Version: - Status: RL (released | freigegeben | validé) printed: 18.03.2020



## Table of contents

<b>1. General Technical Data</b>	<b>3</b>
1.1. Flow regulator, screwable and pluggable .....	3
1.2. Quick exhaust valve .....	4
1.3. Restrictor and restrictor silencer .....	4
1.4. Shuttle valve .....	5
<b>2. Product versions</b>	<b>5</b>
2.1. Flow regulator, screwable and pluggable .....	5
2.2. Quick exhaust valve .....	6
2.3. Restrictor and restrictor silencer .....	6
2.4. Shuttle valve .....	7
<b>3. Ordering information</b>	<b>7</b>
3.1. Bürkert eShop – Easy ordering and quick delivery.....	7
3.2. Bürkert product filter.....	7
3.3. Ordering chart flow regulator, screwable and pluggable.....	8
Restrictor valve .....	8
Restrictor valve, block design.....	9
One-way flow restrictor (exhaust air) .....	10
One-way flow restrictor (inlet air) .....	11
One-way flow restrictor, block design .....	12
One-way flow restrictor, pluggable, block design, one-way control .....	12
Check valve with external thread and plug connection, flow rate from F to D .....	13
Check valve with external thread and plug connection, flow rate from D to F .....	13
Check valve with internal thread.....	13
Check valve with plug connection.....	13
Check valves.....	13
3.4. Ordering chart quick exhaust valve .....	15
Brass nickel-plated version.....	15
Stainless steel version .....	15
3.5. Ordering chart restrictor and restrictor silencer.....	16
Restrictor silencer, brass .....	16
Restrictor silencer, brass, cylindrical .....	16
Restrictor, brass, nickel-plated, with exhaust air connection .....	16
Restrictor, brass, nickel-plated, free bleed-off.....	16
3.6. Ordering chart shuttle valve.....	17

## 1. General Technical Data

### 1.1. Flow regulator, screwable and pluggable

**Note:**

Other versions, connections, materials, seal materials on request

Product properties	
Dimensions	Detailed information can be found in the corresponding ordering chart in the chapter <b>“3.3. Ordering chart flow regulator, screwable and pluggable” on page 8.</b>
<b>Material</b>	
Body	<ul style="list-style-type: none"> <li>• Brass nickel-plated</li> <li>• Stainless steel AISI 316</li> <li>• Plastic PBTP</li> <li>• Aluminium</li> </ul>
Seal O-ring	<ul style="list-style-type: none"> <li>• Brass nickel-plated: NBR</li> <li>• Stainless steel AISI 316: FKM</li> <li>• Plastic PBTP: NBR</li> <li>• Aluminium: NBR</li> </ul>
Performance data	
<b>Nominal pressure</b>	
Brass nickel-plated	Max. 10 bar <sup>1.)</sup>
Stainless steel AISI 316	For detailed information please refer to <b>“3.3. Ordering chart flow regulator, screwable and pluggable” on page 8.</b>
Plastic PBTP	Max. 10 bar <sup>1.)</sup>
Aluminium	Max. 10 bar <sup>1.)</sup>
Medium data	
<b>Medium</b>	
Brass nickel-plated	Air, neutral gases
Stainless steel AISI 316	Air, neutral gases
Plastic PBTP	Air, neutral gases, liquids
Aluminium	Air, neutral gases, liquids
<b>Medium temperature</b>	
Brass nickel-plated	-10...+70 °C
Stainless steel AISI 316	-10...+120 °C
Plastic PBTP	0...+60 °C
Aluminium	-10...+70 °C

1.) Pressure specification: Overpressure to atmospheric pressure

## 1.2. Quick exhaust valve

### Note:

Other versions, connections, materials, seal materials on request

Product properties	
Dimensions	Detailed information can be found in the corresponding ordering chart in the chapter "3.4. Ordering chart quick exhaust valve" on page 15.
<b>Material</b>	
Body	<ul style="list-style-type: none"> <li>Brass nickel-plated</li> <li>Stainless steel AISI 316</li> </ul>
Seal	<ul style="list-style-type: none"> <li>Brass nickel-plated: NBR</li> <li>Stainless steel AISI 316: FKM</li> </ul>
Performance data	
<b>Nominal pressure</b>	
Brass nickel-plated	0.5...12 bar <sup>1.)</sup>
Stainless steel AISI 316	0.5...10 bar <sup>1.)</sup>
<b>Medium data</b>	
<b>Medium</b>	
Brass nickel-plated	Air, neutral gases
Stainless steel AISI 316	Air, neutral gases
<b>Medium temperature</b>	
Brass nickel-plated	0...+80 °C
Stainless steel AISI 316	-10...+120 °C

1.) Pressure specification: Overpressure to atmospheric pressure

## 1.3. Restrictor and restrictor silencer

### Note:

Other versions on request

Product properties	
Dimensions	Detailed information can be found in the corresponding ordering chart in the chapter "3.5. Ordering chart restrictor and restrictor silencer" on page 16.
<b>Material</b>	
Body	Brass
<b>Performance data</b>	
Nominal pressure	$P_{max} = 12 \text{ bar}^{1.)}$
<b>Medium data</b>	
Medium	Air, neutral gases
Medium temperature	-10 °C...+80 °C

1.) Pressure specification: Overpressure to atmospheric pressure

## 1.4. Shuttle valve

### Note:

Other versions on request

Product properties	
Dimensions	Detailed information can be found in the corresponding ordering chart in the chapter "3.6. Ordering chart shuttle valve" on page 17.
Material	
Body	Aluminium
Performance data	
Nominal pressure	2...10 bar <sup>1.)</sup>
Process/Port connection & communication	
Fluidic connection	G 1/8, G 1/4
Medium data	
Medium	Lubricated or non-lubricated, filtered air
Medium temperature	- 10...+ 80 °C

1.) Pressure specification: Overpressure to atmospheric pressure

w

## 2. Product versions

### 2.1. Flow regulator, screwable and pluggable



#### Properties:

- Restrictor valve
- One-way flow restrictor
  - One-way flow restrictor (exhaust air)
  - One-way flow restrictor (inlet air)
- Check valve

#### Features:

- M 5 to G 1/2" threaded connection
- 4 to 12 mm push-in connector
- Brass nickel-plated, stainless steel, aluminium, plastic PBTP

Detailed information regarding the **General technical data** can be found in the chapter "1.1. Flow regulator, screwable and pluggable" on page 3.

Detailed information regarding **Ordering information** can be found in the chapter "3.3. Ordering chart flow regulator, screwable and pluggable" on page 8.

## 2.2. Quick exhaust valve



### Properties:

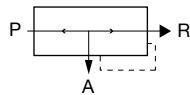
Quick exhaust valve that shortens the exhaust time for pneumatic linear and rotary actuators.

### Features:

- For direct mounting at consumer
- Short venting path
- Fast cylinder movement

### Circuit function:

When pressure is applied to input P it goes to output A. The ventilation R is locked. When pressure in A is more than P then A is vented at R.



Detailed information regarding the **General technical data** can be found in the chapter “[1.2. Quick exhaust valve](#)” on page 4.

Detailed information regarding **Ordering information** can be found in the chapter “[3.4. Ordering chart quick exhaust valve](#)” on page 15.

## 2.3. Restrictor and restrictor silencer



### Properties:

Restrictor silencers are used to reduce the noise level and restrict the discharged compressed air in pneumatic valves.

### Features:

- For direct mounting on appliance
- With integrated silencer
- Compact construction

Detailed information regarding the **General technical data** can be found in the chapter “[1.3. Restrictor and restrictor silencer](#)” on page 4.

Detailed information regarding **Ordering information** can be found in the chapter “[3.5. Ordering chart restrictor and restrictor silencer](#)” on page 16.



## 2.4. Shuttle valve



### Properties:

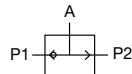
The shuttle valve makes it possible to control a device from two different supply locations. The valve casing is made from aluminium.

### Features:

- Aluminium casing

### Circuit function:

The pressurised port P1 or P2 is connected to A, while the other inlet is blocked. If both ports are subject to pressure, the higher pressure is guided to the outlet.



### Flow rate $Q_{Nn}$ value air:

Measured at +20 °C, 6 bar<sup>1)</sup> pressure at the valve inlet and 1 bar pressure differential

Fluid connection	$Q_{Nn}$ value air	Pressure range <sup>1)</sup>
	[l/min]	[bar]
G 1/8	200	2...10
G 1/4	200	2...10

1.) Pressure specification: Overpressure to atmospheric pressure

Detailed information regarding the **General technical data** can be found in the chapter “1.4. Shuttle valve” on page 5.

Detailed information regarding **Ordering information** can be found in the chapter “3.3. Ordering chart flow regulator, screwable and pluggable” on page 8.

## 3. Ordering information

### 3.1. Bürkert eShop – Easy ordering and quick delivery



#### Bürkert eShop – Easy ordering and fast delivery

You want to find your desired Bürkert product or spare part quickly and order directly? Our online shop is available for you 24/7. Sign up and enjoy all the benefits.

[Order online now](#)

### 3.2. Bürkert product filter



#### Bürkert product filter – Get quickly to the right product

You want to select products comfortably based on your technical requirements? Use the Bürkert product filter and find suitable articles for your application quickly and easily.

[Try out our product filter](#)

### 3.3. Ordering chart flow regulator, screwable and pluggable

#### Restrictor valve

	Material	Medium	F	Diameter	L	L1	L2	Packaging unit	Article no.
				[mm]	[mm]	[mm]	[mm]	[pieces]	
	Brass nickel-plated	Air	M 5	4	28.0	24.0	10.5	1	780217
			G 1/8	4	37.0	25.0	18.5	1	780218
			G 1/8	6	37.0	26.0	18.5	1	780219
			G 1/4	6	50.0	28.0	24.0	1	780220
			G 1/8	8	37.0	31.0	18.5	1	780221
			G 1/4	8	50.0	31.0	24.0	1	780222
			G 1/4	10	50.0	36.0	24.0	1	780223

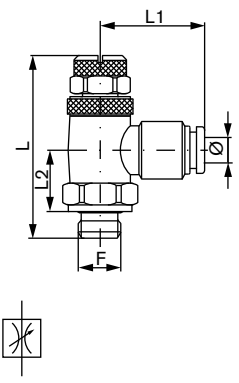
	Material	Medium	F	Threaded connection F1	L	L1	L2	Packaging unit	Article no.
					[mm]	[mm]	[mm]	[pieces]	
	Brass nickel-plated	Air, neutral gases	G 1/8	G 1/8	30.9	21.4	15.8	1	780228
			G 1/4	G 1/4	37.0	25.5	19.1	1	780229

	Material	Medium	F	Diameter	L	L1	Packaging unit	Article no.
				[mm]	[mm]	[mm]	[pieces]	
	Stainless steel AISI 316	Air, neutral gases	1/8"	6	42.0	24.0	1	771636
			1/4"	6	50.0	27.0	1	771637
			1/8"	8	42.0	24.0	1	771638
			1/4"	8	50.0	27.0	1	771639
			3/8"	10	57.0	31.0	1	771640
			1/2"	12	70.0	34.0	1	771641

	Material	Medium	F	F1	L	L1	Packaging unit	Article no.
					[mm]	[mm]	[pieces]	
	Stainless steel AISI 316	Air, neutral gases	1/8"	1/8"	42.0	20.0	1	771643
			1/4"	1/4"	50.0	25.0	1	770177
			3/8"	3/8"	57.0	28.0	1	771644
			1/2"	1/2"	70.0	31.0	1	771645

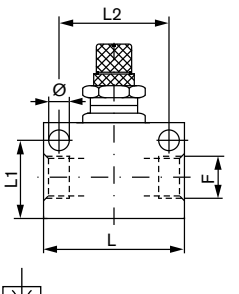
DTS 1000422051 EN Version: - Status: RL (released | freigegeben | valide) printed: 18.03.2020



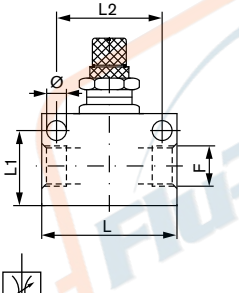


Material	Medium	F	Diameter	L	L1	L2	Packaging unit	Article no.
			[mm]	[mm]	[mm]	[mm]	[pieces]	
Plastic PBTP	Air, neutral gases	M 5	4	27.7	19.1	13.5	1	783394
		1/8"	4	33.5	21.0	18.9	1	783395
		M 5	6	27.7	20.8	13.5	1	783396
		1/8"	6	33.5	22.3	18.9	1	783398
		1/4"	6	38.8	24.3	23.0	1	783397
		1/8"	8	33.5	25.6	18.9	1	783400
		1/4"	8	38.8	27.2	23.0	1	783399
		1/4"	10	38.8	28.6	23.0	1	783401
		3/8"	10	47.2	30.3	26.9	1	783402
		1/4"	12	38.8	31.0	23.0	1	783403
		3/8"	12	47.2	32.4	26.9	1	783404
		1/2"	12	53.0	34.0	31.1	1	783405

Restrictor valve, block design



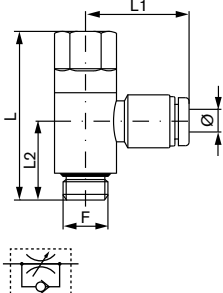
Material	Medium	F	Diameter	L	L1	L2	Packaging unit	Article no.
			[mm]	[mm]	[mm]	[mm]	[pieces]	
Aluminium	Air	M 5	4.2	21.0	12.5	15.0	1	783365
		G 1/8"	4.2	31.0	18.2	25.0	1	783366
		G 1/4"	6.5	45.0	24.5	35.0	1	783367
		G 3/8"	6.5	50.0	25.5	35.0	1	783368
		G 1/2"	6.5	59.0	35.0	44.0	1	783369



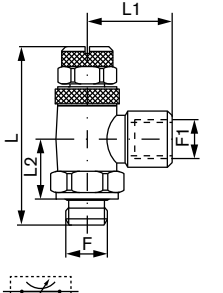
Material	Medium	F	Diameter	L	L1	L2	Packaging unit	Article no.
			[mm]	[mm]	[mm]	[mm]	[pieces]	
Stainless steel AISI 316	Air, neutral gases	1/8"	4.2	32.0	17.0	22.0	1	771463
		1/4"	6.5	55.0	24.0	31.8	1	771464
		3/8"	6.5	55.0	24.0	31.8	1	771465
		1/2"	6.5	64.0	33.0	35.0	1	771466

DTS 1000422051 EN Version: - Status: RL (released | freigegeben | valide) printed: 18.03.2020

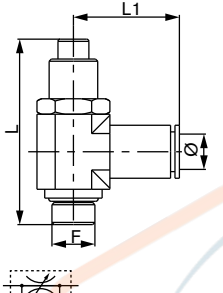
One-way flow restrictor (exhaust air)



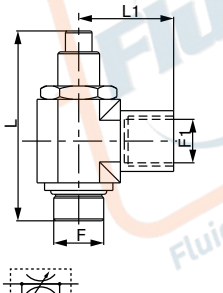
Material	Medium	F	Diameter	L	L1	L2	Packaging unit	Article no.
			[mm]	[mm]	[mm]	[mm]		
Brass nick- el-plated	Air	M 5	4	28.0	24.0	10.5	1	780204 ☒
		G 1/8	4	37.0	25.0	18.5	1	780205 ☒
		G 1/8	6	37.0	26.0	18.5	1	780206 ☒
		G 1/4	6	50.0	28.0	24.0	1	780207 ☒
		G 1/8	8	37.0	31.0	18.5	1	780208 ☒
		G 1/4	8	50.0	31.0	24.0	1	780209 ☒
		G 1/4	10	50.0	36.0	24.0	1	780210 ☒



Material	Medium	F	F1	L	L1	L2	Packaging unit	Article no.
				[mm]	[mm]	[mm]		
Brass nick- el-plated	Air, neutral gases	1/8"	1/8"	42.0	21.4	19.7	1	783406 ☒
		1/4"	1/4"	48.0	25.5	24.0	1	783407 ☒
		3/8"	3/8"	53.0	31.5	28.0	1	783408 ☒

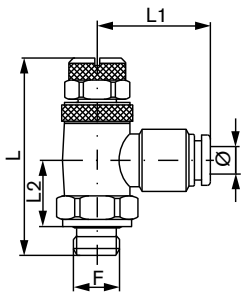


Material	Medium	F	Diameter	L	L1	Packaging unit	Article no.
			[mm]	[mm]	[mm]		
Stainless steel AISI 316	Air, neutral gases	1/8"	6	42.0	24.0	1	771753 ☒
		1/4"	6	50.0	27.0	1	771754 ☒
		1/8"	8	42.0	24.0	1	771755 ☒
		1/4"	8	50.0	27.0	1	771756 ☒
		3/8"	10	57.0	31.0	1	771757 ☒
		1/2"	12	70.0	34.0	1	771758 ☒



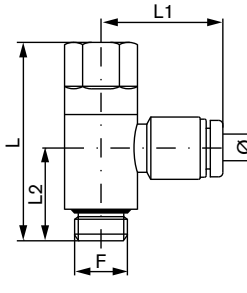
Material	Medium	F	F1	L	L1	Packaging unit	Article no.
				[mm]	[mm]		
Stainless steel AISI 316	Air, neutral gases	1/8"	1/8"	42.0	20.0	1	771760 ☒
		1/4"	1/4"	50.0	25.0	1	771761 ☒
		3/8"	3/8"	57.0	28.0	1	771762 ☒
		1/2"	1/2"	60.0	31.0	1	771763 ☒

DTS 1000422051 EN Version: - Status: RL (released | freigegeben | valide) printed: 18.03.2020

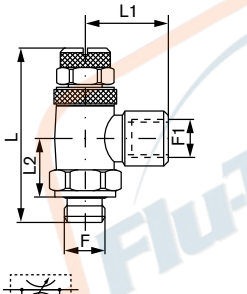


Material	Medium	F	Diameter	L	L1	L2	Packaging unit	Article no.
			[mm]					
Plastic PBTP	Air, neutral gases	M 5	4	29.5	18.2	17.6	10	771807
		1/8"	4	35.4	19.4	16.1	10	771808
		1/4"	4	42.6	24.0	18.6	10	771809
		M 5	6	29.5	18.2	17.8	10	771810
		1/8"	6	35.4	19.4	17.0	10	771811
		1/4"	6	42.6	24.0	19.6	10	771812
		1/8"	8	35.4	19.4	17.7	10	771813
		1/4"	8	42.6	24.0	20.2	10	771814
		3/8"	8	48.0	26.3	21.7	5	771815
		1/4"	10	42.6	25.5	22.8	10	771816
		3/8"	10	48.0	26.3	23.7	5	771817
		3/8"	12	48.0	27.3	25.5	5	771818
		1/2"	12	53.5	29.1	28.6	5	771819

One-way flow restrictor (inlet air)

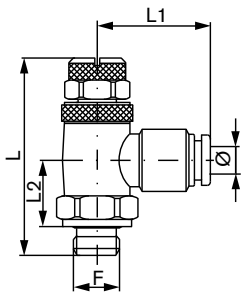


Material	Medium	F	Diameter	L	L1	L2	Packaging unit	Article no.
			[mm]					
Brass nickel-plated	Air, neutral gases	G 1/8	4	37.0	25.0	18.5	1	780211
		G 1/8	6	37.0	26.0	18.5	1	780212
		G 1/4	6	50.0	28.0	24.0	1	780213
		G 1/8	8	37.0	31.0	18.5	1	780214
		G 1/4	8	50.0	31.0	24.0	1	780215
		G 1/4	10	50.0	36.0	24.0	1	780216

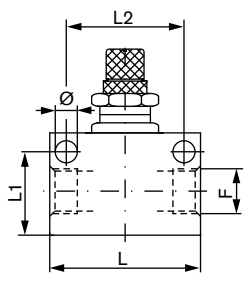
Material	Medium	F	F1	L	L1	L2	Packaging unit	Article no.
Brass nickel-plated	Air, neutral gases	1/8"	1/8"	42.0	21.4	19.7	1	783409
		1/4"	1/4"	48.0	25.5	24.0	1	783410
		3/8"	3/8"	53.0	31.5	28.0	1	783411

DTS 1000422051 EN Version: - Status: RL (released | freigegeben | valide) printed: 18.03.2020



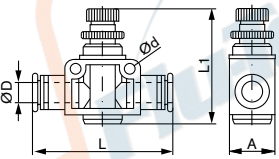
Material	Medium	F	Diameter	L	L1	L2	Packaging unit [pieces]	Article no.
			[mm]	[mm]	[mm]	[mm]		
Plastic PBTP	Air, neutral gases	M 5	4	29.5	18.2	17.6	10	771764
		1/8"	4	35.4	19.4	16.1	10	771765
		1/4"	4	42.6	24.0	18.6	10	771766
		M 5	6	29.5	18.2	17.8	10	771767
		1/8"	6	35.4	19.4	17.0	10	771768
		1/4"	6	42.6	24.0	19.6	10	771769
		1/8"	8	35.4	19.4	17.7	10	771770
		1/4"	8	42.6	24.0	20.2	10	771771
		3/8"	8	48.0	26.3	21.7	5	771772
		1/4"	10	42.6	25.5	22.8	10	771773
		3/8"	10	48.0	26.3	23.7	5	771774
		3/8"	12	48.0	27.3	25.5	5	771775
		1/2"	12	53.5	29.1	28.6	5	771776

One-way flow restrictor, block design



Material	Medium	F	Diameter	L	L1	L2	Packaging unit [pieces]	Article no.
			[mm]	[mm]	[mm]	[mm]		
Aluminum	Air	M 5	4.2	21.0	12.5	15.0	1	783360
		G 1/8"	4.2	31.0	18.2	25.0	1	783361
		G 1/4"	6.5	45.0	24.5	35.0	1	783362
		G 3/8"	6.5	50.0	25.5	35.0	1	783363
		G 1/2"	6.5	59.0	35.0	44.0	1	783364
		Stainless steel AISI 316	Air, neutral gases	1/8"	4.2	32.0	17.0	22.0
1/4"	6.5	55.0		24.0	31.8	1	771460	
3/8"	6.5	55.0		24.0	31.8	1	771461	
1/2"	6.5	64.0		33.0	35.0	1	771462	

One-way flow restrictor, pluggable, block design, one-way control



Material	Medium	Diameter D	Diameter d	L	L1	A	Packaging unit [pieces]	Article no.
		[mm]	[mm]	[mm]	[mm]	[mm]		
Plastic	Air	4	3.2	40.0	29.0	11.0	1	783415
		6	4.3	47.0	44.0	15.0	1	783416
		8	4.3	52.0	47.8	18.0	1	783417
		10	4.3	62.8	53.2	21.0	1	783418
		12	4.3	74.0	57.0	28.0	1	783419

1.) Pressure specification: Overpressure to atmospheric pressure

DTS 1000422051 EN Version: - Status: RL (released | freigegeben | valide) printed: 18.03.2020

**Check valve with external thread and plug connection, flow rate from F to D**

Material	Medium	Pressure P <sub>max</sub> <sup>1.)</sup> [bar]	Medium temperature [°C]	F	Diameter D	L	SW	Packaging unit [pieces]	Article no.
					[mm]				
Brass nickel-plat- ed	Air	0.9...10	0±60	M 5	4	30.0	10	1	783425
				G ½	4	24.7	10	1	783426
				G ½	6	28.6	12	1	783427
				G ½	8	30.5	14	1	783428
				G ¼	6	28.6	14	1	783429
				G ¼	8	35.1	14	1	783430

1.) Pressure specification: Overpressure to atmospheric pressure

**Check valve with external thread and plug connection, flow rate from D to F**

Material	Medium	Pressure P <sub>max</sub> <sup>1.)</sup> [bar]	Medium temperature [°C]	F	Diameter D	L	SW	Packaging unit [pieces]	Article no.
					[mm]				
Brass nickel-plat- ed	Air	0.9...10	0±60	M 5	4	30.0	10	1	783434
				G ½	4	24.7	10	1	783435
				G ½	6	28.6	12	1	783436
				G ½	8	30.5	14	1	783437
				G ¼	6	28.6	14	1	783438
				G ¼	8	35.1	14	1	783439

1.) Pressure specification: Overpressure to atmospheric pressure

**Check valve with internal thread**

Material	Medium	Pressure P <sub>max</sub> <sup>1.)</sup> [bar]	Medium temperature [°C]	Opening pressure	F	L	Packaging unit [pieces]	Article no.
					[mm]			
Brass nickel-plat- ed	Air	10	max. +70	0.05	G ½	34.0	1	783455
					G ¼	39.0	1	783456

1.) Pressure specification: Overpressure to atmospheric pressure

**Check valve with plug connection**

Material	Medium	Pressure P <sub>max</sub> <sup>1.)</sup> [bar]	Medium temperature [°C]	Diameter D	Diameter D1	L	Packaging unit [pieces]	Article no.
				[mm]	[mm]			
Plastic	Air	0.9...10	+50	4	10.0	41.1	1	783420
				6	12.4	47.2	1	783421
				8	14.4	51.6	1	783422

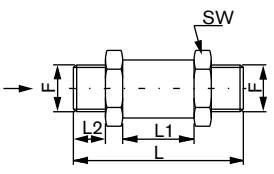
1.) Pressure specification: Overpressure to atmospheric pressure

**Check valves**

Material	Medium	Pressure	Opening pressure <sup>1.)</sup>	Medium temperature	Packaging unit
			[bar]	[°C]	[pieces]
Brass, untreated	Air	PN 10	0.1	Max. 70	1

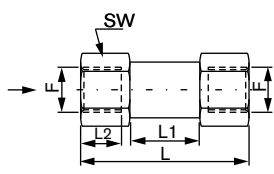
1.) Pressure specification: Overpressure to atmospheric pressure

DTS 1000422051 EN Version: - Status: RL (released | freigegeben | valide) printed: 18.03.2020



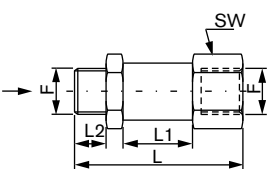
F	L [mm]	L1 [mm]	L2 [mm]	SW [mm]	Article no.
G ¼	48.5	15.5	9.0	17	783443 ☒
G ⅜	54.0	15.0	11.5	19	783444 ☒
G ½	on request	on request	on request	24	783445 ☒

→ Flow direction



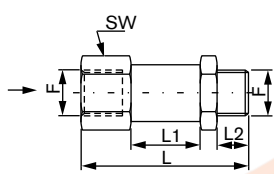
F	L [mm]	L1 [mm]	L2 [mm]	SW [mm]	Article no.
G ¼	48.5	20.5	8.0	17	783446 ☒
G ⅜	54.0	23.0	10.0	19	783447 ☒
G ½	64.0	30.0	12.0	24	783448 ☒

→ Flow direction



F	L [mm]	L1 [mm]	L2 [mm]	SW [mm]	Article no.
G ¼	48.5	20.5	9.0	17	783449 ☒
G ⅜	54.0	23.0	11.0	19	783450 ☒
G ½	on request	on request	on request	on request	783451 ☒

→ Flow direction



F	L [mm]	L1 [mm]	L2 [mm]	SW [mm]	Article no.
G ¼	48.5	20.5	9.0	17	783452 ☒
G ⅜	on request	on request	on request	19	783453 ☒
G ½	65.5	30.0	14.0	24	783454 ☒

→ Flow direction

DTS 1000422051 EN Version: - Status: RL (released | freigegeben | validé) printed: 18.03.2020

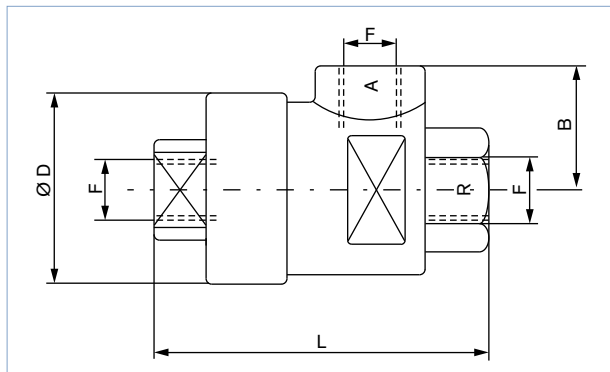


### 3.4. Ordering chart quick exhaust valve

#### Brass nickel-plated version

**Note:**

Dimensions in mm

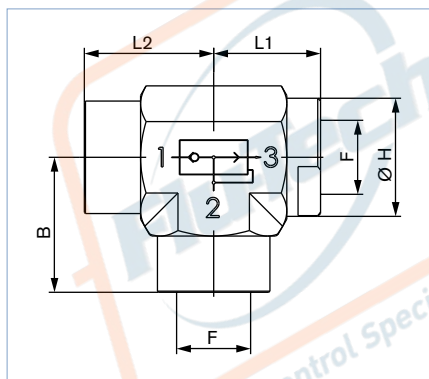


Port connection	Pressure range [bar]	F [mm]	B [mm]	Ø D [mm]	L [mm]	Article no.
G 1/8	0.5...12	G 1/8	19.5	28.0	42.0	783709
G 1/4	0.5...12	G 1/4	25.0	34.5	54.0	783710
G 3/8	0.5...12	G 3/8	26.5	38.0	60.5	772886
G 1/2	0.5...12	G 1/2	32.0	43.0	72.0	783711
G 3/4	0.5...12	G 3/4	37.0	48.5	88.0	771047
G 1	0.5...12	G 1	48.0	75.5	109.0	771048
M 5	0.5...12	M 5	10.0	20.0	25.0	772885

#### Stainless steel version

**Note:**

Dimensions in mm



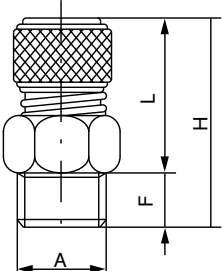
Port connection	Q <sub>Nn</sub> value air P→A	Q <sub>Nn</sub> value air A→R	Pressure range [bar]	F [mm]	B [mm]	H [mm]	L1 [mm]	L2 [mm]	Article no.
	[l/min]	[l/min]							
G 1/8	650	1100	0.5...40	G 1/8	23.0	17.0	16.5	21.0	771467
G 1/4	1290	2780	0.5...40	G 1/4	23.0	17.0	16.5	21.0	771468
G 3/8	1810	3810	0.5...40	G 3/8	26.0	22.0	19.0	25.5	771469
G 1/2	3810	5490	0.5...40	G 1/2	32.5	27.0	23.0	31.0	771470

Visit product website

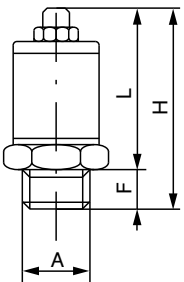


## 3.5. Ordering chart restrictor and restrictor silencer

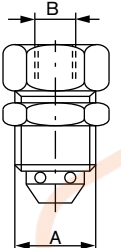
## Restrictor silencer, brass

	A	F	L	H	Packaging unit	Article no.
		[mm]	[mm]	[mm]	[pieces]	
	G 1/8	6	20...22	26...28	1	783316
	G 1/4	8	22...24	30...32	1	783317
	G 3/8	10	25...28	35...38	1	783318
	G 1/2	11	26...29	36...39	1	783319
	G 3/4	12	32...37	45...50	1	783320
	G 1	12	32...37	45...50	1	783321

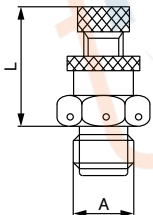
## Restrictor silencer, brass, cylindrical

	A	F	L	H	Packaging unit	Article no.
			[mm]	[mm]	[pieces]	
	M5	3.5	13...18	16...21	1	783322
	G 1/8	8	30...36	38...44	1	783323
	G 1/4	9	30...36	39...45	1	783324
	G 3/8	10	33...50	43...60	1	783325
	G 1/2	11	33...50	48...61	1	783326
	G 3/4	11	56...80	68...92	1	783327
	G 1	11	56...80	68...92	1	783328

## Restrictor, brass, nickel-plated, with exhaust air connection

	A	B	Packaging unit	Article no.
		[mm]	[pieces]	
	G 1/8	G 1/8	10	783329
	G 1/4	G 1/8	10	783330
	G 3/8	G 1/4	1	783331
	G 1/2	G 1/4	1	783332

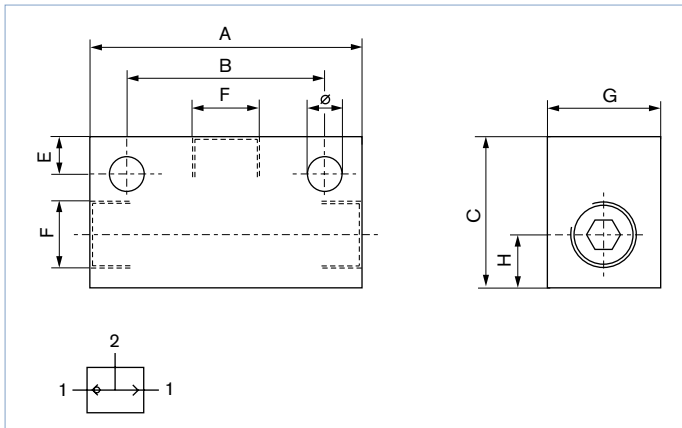
## Restrictor, brass, nickel-plated, free bleed-off

	A	L	Packaging unit	Article no.
		[mm]	[pieces]	
	G 1/8	22	10	783333
	G 1/4	18	10	783334

3.6. Ordering chart shuttle valve

Note:

Dimensions in mm



Ø [mm]	Fluidic connection F	A [mm]	C [mm]	G [mm]	H [mm]	E [mm]	B [mm]	Article no.
4.5	G 1/8	36	20	15	7.5	4	25	783708
4.5	G 1/4	43	25	20	8.5	6.5	25	787732

DTS 1000422051 EN Version: - Status: RL (released | freigegeben | valide) printed: 18.03.2020

