

HIGH-FLOW VANGUARD Clean Air Package

BDFCD100-E8 Models Port Sizes: 3/4, 1



Model Shown: BDFCD100-8E8

These assemblies consist of two filters: a general purpose filter, and a coalescing filter. The general purpose filter removes gross contaminants, while the coalescing filter removes oil mists, aerosols, and minute particles.

SPECIFICATIONS

Ambient/Media Temperature:

Manual & auto drains: 40° to 175°F (4° to 79°C).

Float drains: 40° to 150°F (4° to 66°C).

Body: Aluminum.

Bowls: 16-Ounce (480-ml) capacity aluminum. Clear nylon sight glass on general purpose and coalescing filters. Bowls are rotatable for easy readability.

Bowl Ring: Aluminum.

Filter Bowl Drains:

Internal automatic drains for general purpose and coalescing filters.

Filter Elements: General purpose: 5- μ m-rated polyethylene; optional 5- μ m sintered bronze.
Coalescing: 0.3- μ m-rated borosilicate glass fiber; optional 0.01- μ m-rated element.

Fluid Media: Compressed air.

Inlet Pressure:

Minimum: 15 psig (1 bar).

Maximum: 200 psig (14 bar).

- ◆ Inline mounting.
- ◆ 5- μ m-rated polyethylene general purpose filter element.
- ◆ 0.3- μ m-rated coalescing filter element; optional 0.01- μ m element.
- ◆ Metal bowls. Clear nylon sight glass on general purpose and coalescing filters. Bowls rotatable for easy readability.
- ◆ Internal automatic filter drain for general purpose and coalescing filters.
- ◆ Differential pressure gauge on coalescing filter to indicate when filter element needs changing.
- ◆ NPTF port threads; optional BSPP threads.

AIR FLOW and CONSTRUCTION DATA

See Flow Charts and Specifications for individual assembly components on preceding pages.



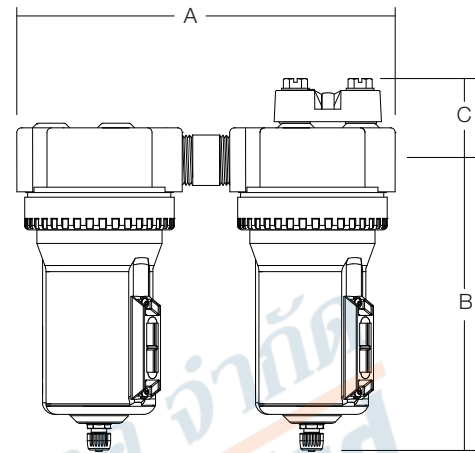
บริษัท ฟลูเทค จำกัด
FLU-TECH CO.,LTD

845/3-4 หมู่ 3 ถ.เทพารักษ์ ต.เทพารักษ์ อ.เมือง จ.สมุทรปราการ 10270

845/3-4 Thepharak RD., T.Thepharak, A.Muang, Samutprakarn 10270 THAILAND
Tel. 0 2384 6060, Fax 0 2384 5701, Email : sales@flutech.co.th, www.flutech.co.th

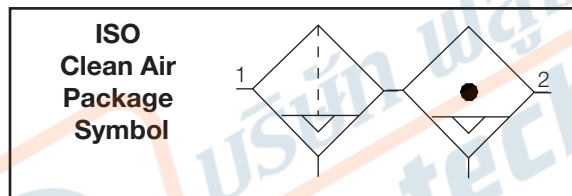
DIMENSIONS inches (mm)

A	B	C	Depth	Weight lb (kg)
10 (255)	7.8 (199)	2.3 (58)	4.2 (106)	5.00 (2.27)



REPLACEMENT FILTER ELEMENT KITS

Element	Model Usage	Kit Number
5- μ m Plastic (Std)	General purpose filter	KA109-3PE
5- μ m Bronze	General purpose filter	KA109-03E5
0.3- μ m (Std)	Coalescing filter	A109-106
0.01- μ m	Coalescing filter	A109-106E8



ORDERING INFORMATION

If product number exceeds 15 characters consult factory for new number:

B **FD** **FCD** **100** **S** - **6** **E5** **E8** **W**

FILTER BOWL DRAIN

- Internal automatic drain..... FD
- Manual drain F
- Internal float drain (**brass stem**) F6A

COALESCING FILTER BOWL DRAIN

- Internal automatic drain..... FCD
- Manual drain FC
- Internal float drain (**brass stem**) FC6A

DIFFERENTIAL PRESSURE GAUGE

- No gauge Leave Blank
- (Add **NG** option after **COALESCING FILTER ELEMENT TYPE**.)
- Large differential pressure gauge ... Leave Blank
- Small differential pressure gauge ... S
- Large differential pressure gauge ... E
- with normally open reed switch.
- Large differential pressure gauge ... E2
- with normally closed reed switch.

PORT TYPE

- NPTF Leave Blank
- BSPP W

COALESCING ELEMENT TYPE

- 0.3- μ m element Leave Blank
- 0.01- μ m element E8

FILTER ELEMENT TYPE

- 5 micron bronze E5
- element.
- 5 micron polyethylene .. Leave Blank
- element.

PORT SIZE

- 3/4 NPTF 6
- 1 NPTF 8

DIFFERENTIAL PRESSURE GAUGES



Small Slide Gauge
K103-151



Large Dual Face Gauge
106-35



Large Dual Face Gauge
with Reed Switch
106-35E (Normally Open)
106-35EC (Normally Closed)



บริษัท ฟลูเทค จำกัด
FLU-TECH CO.,LTD

845/3-4 หมู่ 3 ถ.เทพารักษ์ ต.เทพารักษ์ อ.เมือง จ.สมุทรปราการ 10270

845/3-4 Thepharak RD., T.Thepharak, A.Muang, Samutprakarn 10270 THAILAND
Tel. 0 2384 6060, Fax 0 2384 5701, Email : sales@flutech.co.th, www.flutech.co.th