



2/2 and 3/2 way Bürkert TwinPower Rocker-Solenoid Valve with separating diaphragm

- For highest chemical resistance requirements
- Ultra compact design due to Bürkert Twinpower actuator with 10.3 mm width
- DN 0.8 (5 bar) and DN 1.6 (2 bar)
- Integrated hit and hold electronic
- High back pressure tightness with excellent cleanability

Product variants described in the data sheet may differ from the product presentation and description.

Can be combined with



Type 2505

10 mm socket for Bürkert small solenoid valves

Type description

Type 6624 combines the reliable and successful Rocker principle with a highly innovative new actuator. The Bürkert TwinPower concept of this actuator reduces the size greatly without loss in performance. Hence the 10 mm wide medium isolated rocker valve, 6624, with a 1.6 mm orifice and a pressure resistance of 2 bar, provides the same performance as a traditional 16 mm valve. In addition, the integrated power reduction decreases the energy consumption by 75 %. In combination with other design features the heat transfer into the medium can be reduced to a minimum. In the design of the 6624, the main benefits lie in its excellent cleanability and a high reliability. By using high performance materials the 6624 suits the handling of aggressive medium perfectly. The valve is available in a 2-way and 3-way version.

1. General technical data

Product properties	
Dimensions	Detailed information can be found in chapter "5. Dimensions" on page 6.
Material	
Seal	FFKM, FKM or EPDM
Fluid body	PEEK or PPS
Internal volume	Bürkert flange: from 110 µl Tube connector: from 285 µl UNF ¼"-28: from 115 µl
Nominal diameter	DN 0.8 (Vac ^{1.)} ...5 bar DN 1.6 (Vac ^{1.)} ...2 bar
Switching function	Detailed information can be found in chapter "3. Circuit functions" on page 4.
Electrical data	
Operating voltage ^{2.)}	12 V DC, 24 V DC
Voltage tolerance ^{3.)}	12 V DC + 10 % / - 5 % 24 V DC ± 10 %
Switching frequency ^{4.)}	Max. 5 Hz
Nominal power consumption	4 W inrush power 1 W nominal holding power (internal power reduction)
Performance data	
Duty cycle	100 % continuous rating
Switching times ^{3.)}	Opening: ca. 10 ms (Pressure rise 0...10 %) Closing: ca. 13 ms (Pressure drop 100...90 %)
Medium data	
Operating medium	Resistant to neutral and aggressive liquids and gases; see chapter "4.1. Chemical Resistance Chart – Bürkert resistApp" on page 5)
Medium temperature	FFKM: + 15 °C...+50 °C FKM: - 10 °C...+50 °C EPDM: - 10 °C...+50 °C (for orifice DN 0.8) + 5 °C...+50 °C (for orifice DN 1.6)
Process/Port connection & communication	
Port connection	Bürkert Flange (10 x 30 mm) Tube connection UNF ¼"-28
Electrical connection	PFA single leads, 0.5 mm ² , AWG 20, length 300 mm Rectangular plug Type 2505 ▶
Environment and installation	
Installation	As required, preferably with actuator upright
Degree of protection	IP40 with flying leads IP30 with rectangular plug Type 2505 ▶
Ambient temperature	FFKM: + 15 °C...+55 °C FKM: - 10 °C...+55 °C EPDM: - 10 °C...+55 °C (for orifice DN 0.8) + 5 °C...+55 °C (for orifice DN 1.6)
Minimum bending radius for flying leads version	Single bending: 8 mm Multiple bending: 13 mm

1.) Technical vacuum (-0.8 bar) at NC or NO; connection at valve output (COM/OUT) only after consultation

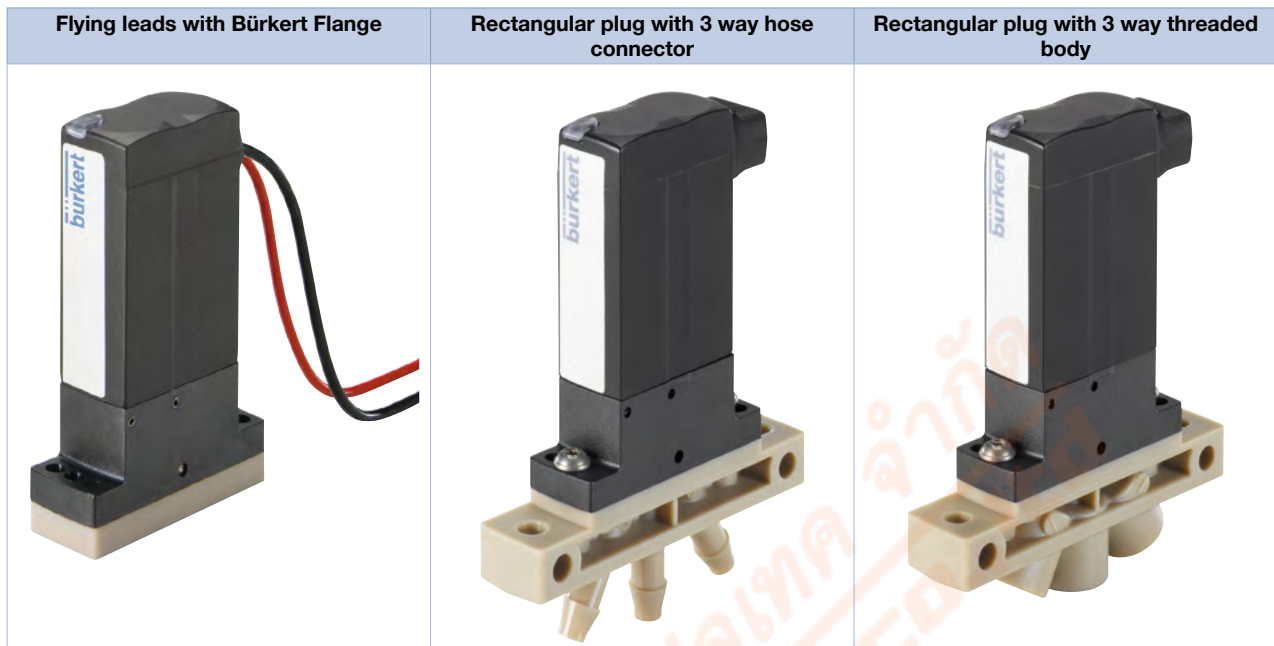
2.) Battery voltage, observe polarity (Flying leads version: red = +, black = -)

3.) Max. allowed ripple

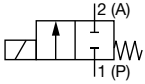
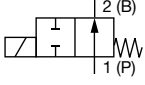
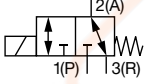
4.) With ambient temperature of 20 °C

5.) Measurement at the valve outlet at 2 bar and 20 °C according to DIN ISO 12238:2001

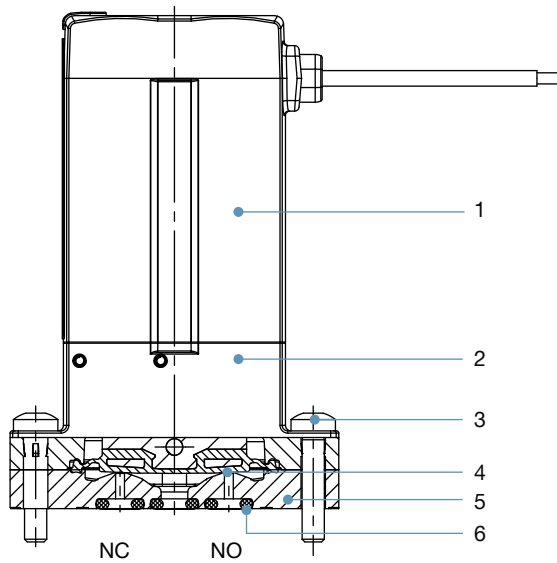
2. Product versions



3. Circuit functions

Circuit functions	Description
	Type: A, solenoid valve 2/2 way Direct-acting Normally closed
	Type: B, solenoid valve 2/2 way Direct-acting Normally open
	Type: T, solenoid valve 3/2 way Direct-acting Flow direction optional Normally closed

4. Material specifications



No.	Element	Material
1	Coil	Epoxy
2	Valve body	PPS
3	Mounting screw M2	Stainless steel
4	Diaphragm (in contact with medium)	FFKM, FKM or EPDM
5	Fluid body (in contact with media)	PEEK or PPS
6	Flange seal (in contact with medium)	FFKM, FKM or EPDM

บริษัท ฟลูเทค จำกัด
FLU-TECH CO., LTD

FluTech
Fluid Control Specialists

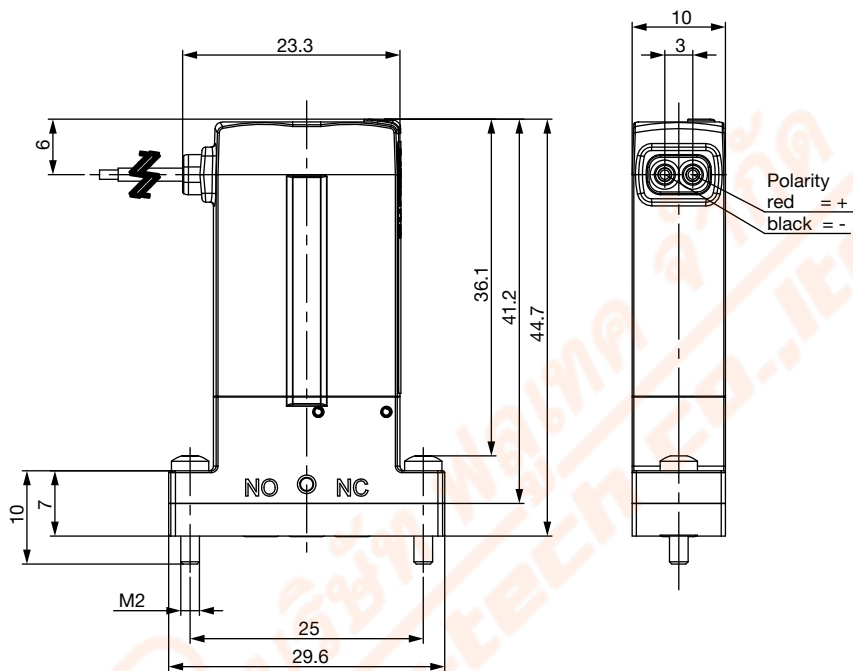
5. Dimensions

5.1. Flange version

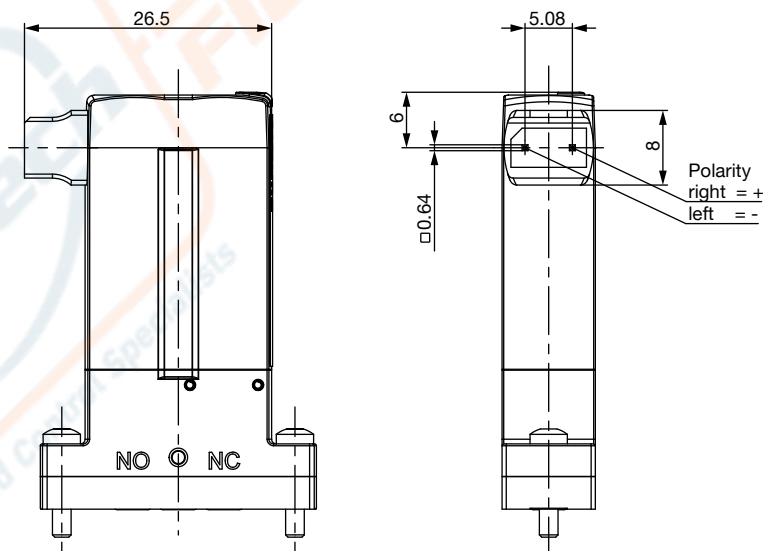
Note:

- Observe polarity!
- Dimensions in mm

Electrical connection: flying leads



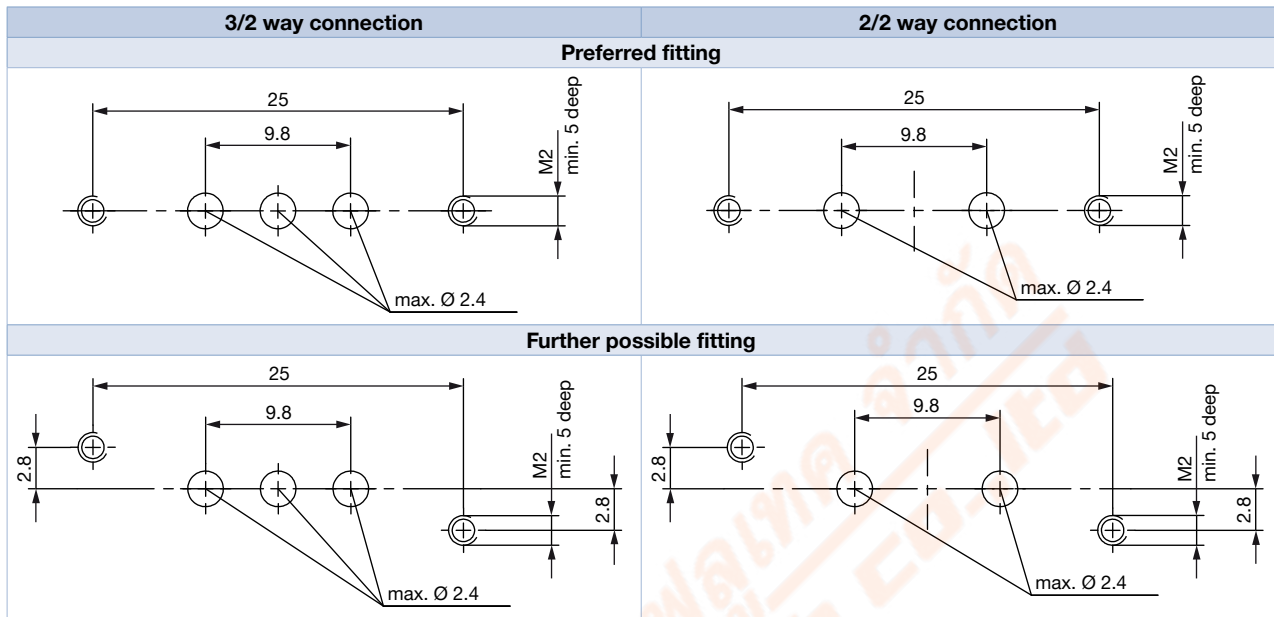
Electrical connection: Rectangular plug (Type 2505)



5.2. Bürkert flange interface (10 x 30 mm)

Note:

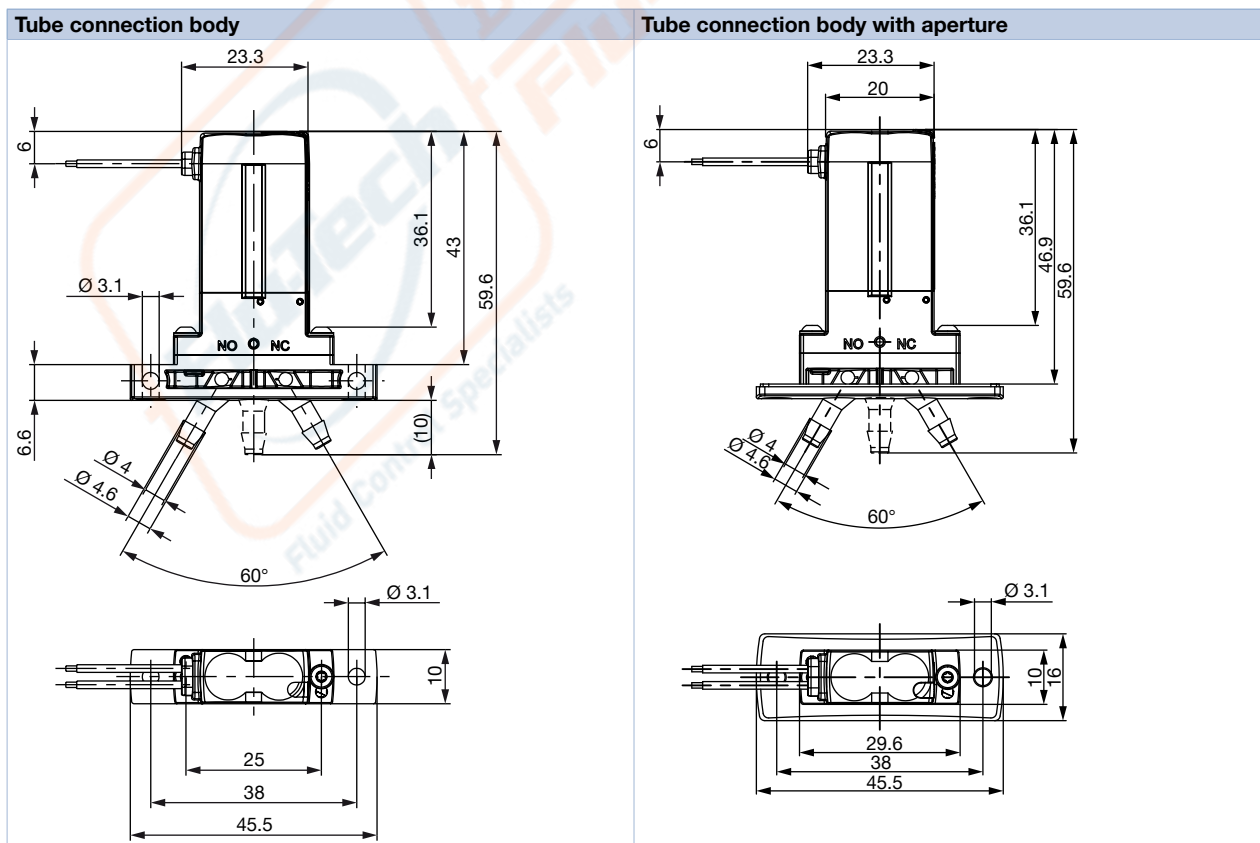
Dimensions in mm



5.3. Tube connector version with flying leads

Note:

Dimensions in mm



5.4. UNF 1/4"-28 version with flying leads

Note:

Dimensions in mm

