



PRODUCT INFORMATION

INTEGRATED FILTER/REGULATOR AND LUBRICATOR

COMBINATION UNITS



ROSS CONTROLS

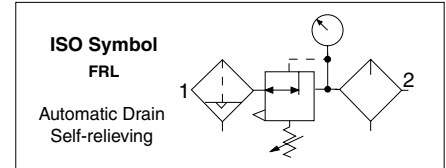
In-line Integrated Filter/Regulator plus Lubricator Combinations

MINIATURE Series

Port Sizes: 1/8 & 1/4 – Flow to 24 scfm

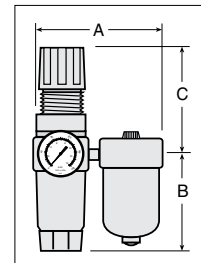


Combination with PISTON Type REGULATOR					
Port Size	Port Threads	Automatic Drain		Manual Drain	
		Polycarbonate Bowl	Metal Bowl	Polycarbonate Bowl	Metal Bowl
		Model Number	Model Number	Model Number	Model Number
With FILL Port Lubricator					
1/8	NPTF	5351C1006	5352C1006	5351C1005	5352C1005
	G	C5351C1006	C5352C1006	C5351C1005	C5352C1005
1/4	NPTF	5351C2006	5352C2006	5351C2005	5352C2005
	G	C5351C2006	C5352C2006	C5351C2005	C5352C2005
With QUICK-FILL Cap Lubricator					
1/8	NPTF	5351C1106	5352C1106	5351C1105	5352C1105
	G	C5351C1106	C5352C1106	C5351C1105	C5352C1105
1/4	NPTF	5351C2106	5352C2106	5351C2105	5352C2105
	G	C5351C2106	C5352C2106	C5351C2105	C5352C2105

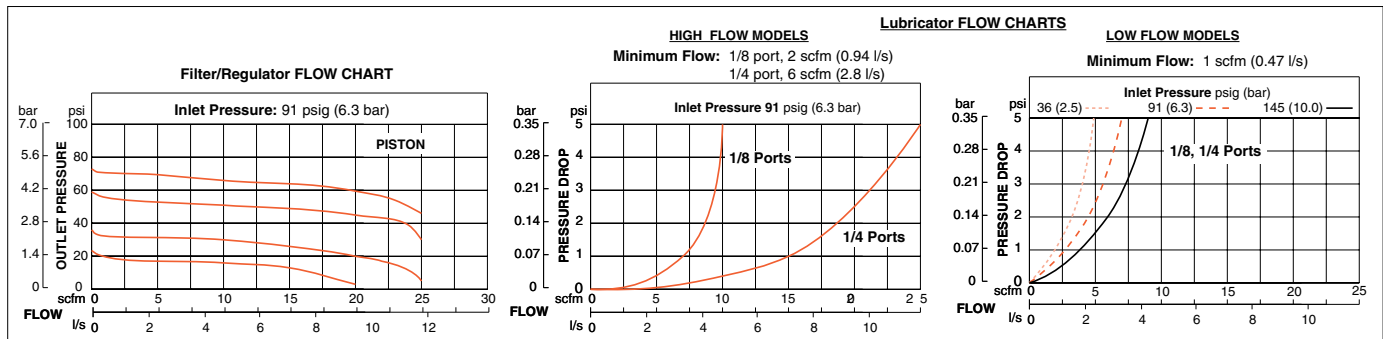


Port Size	Bowl Type	Bowl Capacity	Dimensions inches (mm)				Weight † lb (kg)
			A	B	C	Depth †	
1/8, 1/4	Polycarbonate	2-oz (59.1-ml)	3.7 (94)	3.9 (99)	2.6 (67)	1.6 (41)	0.66 (0.30)
	Aluminum	2-oz (59.1-ml)	4.0 (101)	4.3 (109)	2.6 (67)	1.6 (41)	0.66 (0.30)

† Less gauge.



REPLACEMENT FILTER ELEMENTS		
Element Rating	Element Material	Model Number
5-µm - Standard	Polyethylene	933K77
5-µm - Optional	Sintered Bronze	R-KA130-27E5
20-µm - Optional	Sintered Bronze	R-KA130-27E4
40-µm - Optional	Sintered Bronze	R-KA130-27E3



Pressure Gauge included.
Accessories ordered separately, refer to page G6.3-4.

STANDARD SPECIFICATIONS (for units on this page):

Construction Design	Filter – Fiber Regulator - Piston Lubricator - Wick-Feed	Outlet Pressure	Adjustable up to 100 psig (7 bar).
Temperature	Ambient/Media: Polycarbonate Bowl: 40° to 125°F (4° to 52°C) Metal Bowl: 40° to 175°F (4° to 80°C)	Filter Drain	Internal automatic drain; optional manual drain
Fluid Media	Compressed air	Pressure Gauge	0 to 160 psig (11 bar); 1/8 NPT gauge ports front and rear
Operating Pressure	Automatic Drain Models Polycarbonate Bowl: 15 to 150 psig (1 to 10 bar) Metal Bowl: 15 to 200 psig (1 to 14 bar)	Oil Adjustment	External, no shutoff.
	Manual Drain Models Polycarbonate Bowl: 0 to 150 psig (0 to 10 bar) Metal Bowl: 0 to 200 psig (0 to 14 bar)	Panel Mounting	1-3/16 inch (30 mm) hole required
		Construction Material	Filter Element: 5-micron rated polyethylene Filter/Regulator & Lubricator Bodies: Aluminum Bowl: Polycarbonate bowls or aluminum bowls Regulator Dome and Knob: Acetal Seals: Nitrile

In-line Integrated Filter/Regulator plus Lubricator Combinations

MINIATURE Series

Port Sizes: 1/8 & 1/4 – Flow to 24 scfm

Combination with DIAPHRAGM Type REGULATOR

Port Size	Port Threads	Automatic Drain		Manual Drain	
		Polycarbonate Bowl	Metal Bowl	Polycarbonate Bowl	Metal Bowl
		Model Number	Model Number	Model Number	Model Number

Fill Port Lubricator

1/8	NPTF	5341C1006	5342C1006	5341C1005	5342C1005
	G	C5341C1006	C5342C1006	C5341C1005	C5342C1005
1/4	NPTF	5341C2006	5342C2006	5341C2005	5342C2005
	G	C5341C2006	C5342C2006	C5341C2005	C5342C2005

With QUICK-FILL Cap Lubricator

1/8	NPTF	5341C1106	5342C1106	5341C1105	5342C1105
	G	C5341C1106	C5342C1106	C5341C1105	C5342C1105
1/4	NPTF	5341C2106	5342C2106	5341C2105	5342C2105
	G	C5341C2106	C5342C2106	C5341C2105	C5342C2105

Port Size	Bowl Type	Bowl Capacity	Dimensions inches (mm)				Weight † lb (kg)
			A	B	C	Depth †	
1/8, 1/4	Polycarbonate	2-oz (59.1-ml)	3.7 (94)	3.6 (92)	2.6 (67)	1.6 (41)	0.66 (0.30)
1/8, 1/4	Aluminum	2-oz (59.1-ml)	4.0 (101)	4.3 (109)	2.6 (67)	1.6 (41)	0.66 (0.30)

† Less gauge.

REPLACEMENT FILTER ELEMENTS

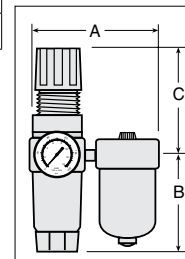
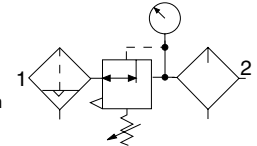
Element Rating	Element Material	Model Number
5-µm - Standard	Polyethylene	933K77
5-µm - Optional	Sintered Bronze	R-KA130-27E5
20-µm - Optional	Sintered Bronze	R-KA130-27E4
40-µm - Optional	Sintered Bronze	R-KA130-27E3



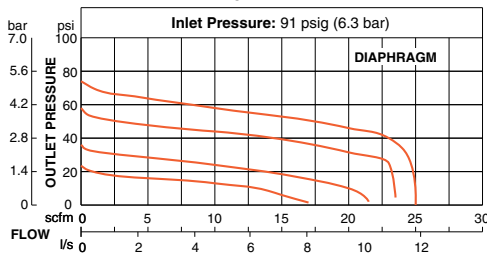
ISO Symbol

FRL

Automatic Drain
Self-relieving

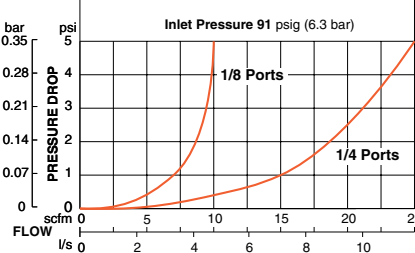


Filter/Regulator FLOW CHART



HIGH FLOW MODELS

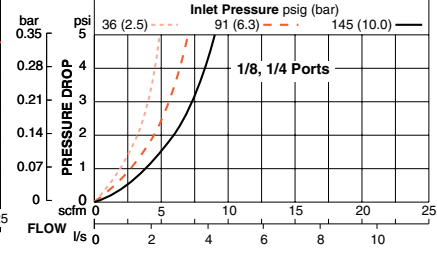
Minimum Flow: 1/8 port, 2 scfm (0.94 l/s)
1/4 port, 6 scfm (2.8 l/s)



Lubricator FLOW CHARTS

LOW FLOW MODELS

Minimum Flow: 1 scfm (0.47 l/s)



G5

G

Pressure Gauge included.
Accessories ordered separately, refer to page G6.3-4.

STANDARD SPECIFICATIONS (for units on this page):

Construction Design	Filter – Fiber Regulator – Diaphragm Lubricator – Week-Feed	Outlet Pressure	Adjustable up to 100 psig (7 bar).
Temperature	Ambient/Media: Polycarbonate Bowl: 40° to 125°F (4° to 52°C) Metal Bowl: 40° to 175°F (4° to 80°C)	Filter Drain	Internal Automatic or Manual
Fluid Media	Compressed air	Pressure Gauge	0 to 160 psig (11 bar); 1/8 NPT gauge ports front and rear
Operating Pressure	Automatic Drain Models Polycarbonate Bowl: 15 to 150 psig (1 to 10 bar) Metal Bowl: 15 to 200 psig (1 to 14 bar)	Oil Adjustment	Internal; tamper-resistant
	Manual Drain Models Polycarbonate Bowl: 0 to 150 psig (0 to 10 bar) Metal Bowl: 0 to 200 psig (0 to 14 bar)	Panel Mounting	1-3/16 inch (30 mm) hole required
		Construction Material	Filter Element: 5-micron rated polyethylene Filter/Regulator & Lubricator Bodies: Aluminum Bowls: Polycarbonate or Aluminum Regulator Dome and Knob: Acetal Seals: Nitrile

Modular Integrated Filter/Regulator plus Lubricator Combinations

MID-SIZE Series

Port Sizes: 1/4, 3/8 & 1/2 – Flow to 100 scfm

Choose your options (in red) to configure your model number.

5N 00 B 2 1 0 1

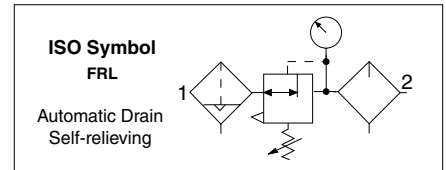
CONNECTIONS	
NPTF Pipe In, Out, Between	00
NPTF Pipe In & Out, Modular Between	09
Modular, Male Ports In & Out	10
Modular, Female Ports In & Out	11

PIPE SIZE	
1/4	2
3/8	3
1/2	4

FILTER DRAIN TYPE	
None	0
Automatic Drain, Plastic Bowl	1
Automatic Drain, Metal Bowl	2
Manual Drain, Plastic Bowl	3
Manual Drain, Metal Bowl	4

Regulator TYPE ADJUSTMENT RANGE	
None	0
0-100 psig (0-6.9 bar)	1
0-50 psig (0-3.4 bar)	3
0-150 psig (0-10 bar)	5

LUBRICATOR FILL TYPE	
None	0
Plastic Bowl	1
Metal Bowl	2
Plastic Bowl, Quick-Fill Cap	3
Metal Bowl, Quick-Fill Cap	4



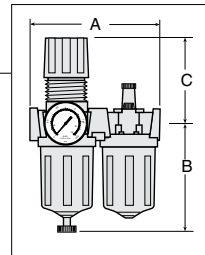
Port Size	Bowl Type	Bowl Capacity	Dimensions* inches (mm)				Weight † lb (kg)
			A	B**	C***	Depth †	
1/4, 3/8, 1/2	Polycarbonate	4-oz (120-ml)	4.9 (124)	4.6 (116)	3.3 (83)	2.4 (60)	2.94 (1.34)
	Zinc	4-oz (120-ml)	4.9 (124)	4.9 (123)	3.3 (83)	2.4 (60)	2.94 (1.34)

* Dimensions for NPTF Pipe In & Out, Modular Between option; dimensions for other combinations consult ROSS.

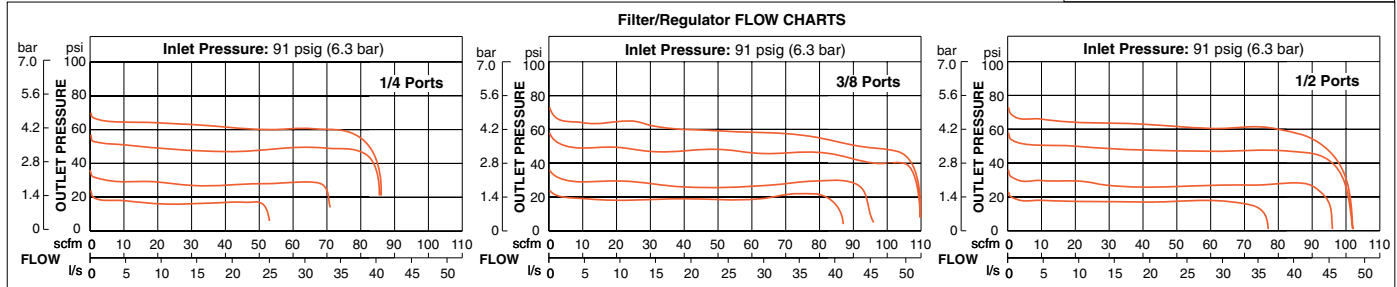
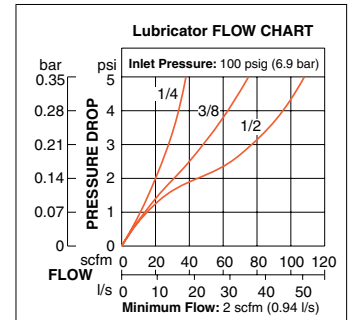
** Bowl removal clearance: add 3.1 (79).

*** Dome removal clearance: add 0.63 (16).

† Less gauge.



REPLACEMENT FILTER ELEMENTS		
Element Rating	Element Material	Model Number
5-µm - Standard	Polyethylene	936K77
5-µm - Optional	Sintered Bronze	R-KA60F-03E5
20-µm - Optional	Sintered Bronze	R-KA60F-03E4
40-µm - Optional	Sintered Bronze	R-KA60F-03E3



Pressure Gauge included. Includes 2 Female Port Blocks.
Accessories ordered separately, refer to page G6.3-4.

STANDARD SPECIFICATIONS (for units on this page):

Construction Design	Filter – Fiber Regulator – Diaphragm Lubricator - Week-Feed	Filter Drain	Internal Automatic or Manual
Temperature	Ambient/Media: Polycarbonate Bowl: 40° to 125°F (4° to 52°C) Metal Bowl: 40° to 175°F (4° to 80°C)	Pressure Gauge	0 to 200 psig (0 to 14 bar); 1/4 NPT gauge ports front and rear
Fluid Media	Compressed air	Oil Adjustment	External; tamper-resistant
Operating Pressure	Automatic Drain Models Polycarbonate Bowl: 15 to 150 psig (1 to 10 bar) Metal Bowl: 15 to 200 psig (1 to 14 bar) Manual Drain Models Polycarbonate Bowl: 0 to 150 psig (0 to 10 bar) Metal Bowl: 0 to 200 psig (0 to 14 bar)	Panel Mounting	1-9/16 inch (40 mm) hole required
Outlet Pressure	Adjustable up to 100 psig (7 bar).	Construction Material	Filter Element: 5-micron rated polyethylene Filter/Regulator & Lubricator Bodies: Zinc Bowls: Polycarbonate bowls with zinc shatterguard, or zinc bowls Regulator Dome and Knob: Acetal Sight Dome: Nylon Seals: Nitrile

Modular Integrated Filter/Regulator plus Lubricator Combinations

MD3™ Series

Port Sizes: 1/4, 3/8 & 1/2 – Flow to 110 scfm

Choose your options (in red) to configure your model number.

MD3 53P B B 2 C 2 2 Q 1

BOWLS MATERIAL/SIZE	
Polycarbonate Bowls 5.1-oz (151-ml) - on Filter/Regulator and Lubricator	53P
Metal Bowls 6-oz (177-ml) - on Filter/Regulator and Lubricator	53M
Metal Bowl 6-oz (177-ml) - on Filter/Regulator	53E
Metal Bowl 10-oz (295-ml) - on Lubricator	53F

ADJUSTMENT RANGE	
0-200 psig (0-14 bar)	A*
0-150 psig (0-10.3 bar)	B
0-100 psig (0-6.9 bar)	C
0-50 psig (0-3.4 bar)	D
Reverse Flow 0-200 psig (0-13.8 bar)	F*
Reverse Flow 0-150 psig (0-10.3 bar)	G
Reverse Flow 0-100 psig (0-6.9 bar)	H
Reverse Flow 0-50 psig (0-3.4 bar)	J

*Must be ordered with metal bowl.

BOWL DRAIN	
Manual Drain	2
Float Drain	0

FILTER ELEMENT TYPE	
40-µm Sintered Bronze	A
5-µm Polyethylene	B
5-µm Sintered Bronze	E
20-µm Sintered Bronze	F

PIPE SIZE	
1/4 NPTF	2
3/8 NPTF	3
1/2 NPTF	4
1/4 G	B
3/8 G	C
1/2 G	D

CAP COLOR	
Black	2
Yellow	Y

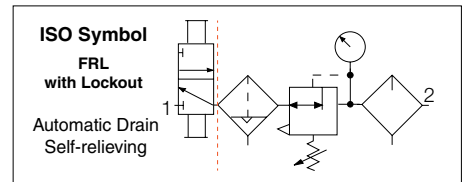
LUBRICATOR FILL TYPE	
None	N
Quick Fill Cap	Q
Fill Port	S

LOCKOUT VALVE	
L-O-X® on outlet side	1
L-O-X® on the inlet side (must also choose Reverse Flow)	2
L-O-X® with EEZ-ON® on outlet side	3
L-O-X® with EEZ-ON® on inlet side (must also choose Reverse Flow)	4
Without Valve - Leave Blank	



REPLACEMENT FILTER ELEMENTS*		
Element Rating	Element Material	Model Number
5-µm	Polyethylene	R-A60F-03PE5
5-µm	Sintered Bronze	R-A60F-03E5
20-µm	Sintered Bronze	R-A60F-03E4
40-µm	Sintered Bronze	R-A60F-03E3

* For polycarbonate and metal bowl types.



G5

Accessories ordered separately, refer to page G6.3-5.

STANDARD SPECIFICATIONS (for units on this page):

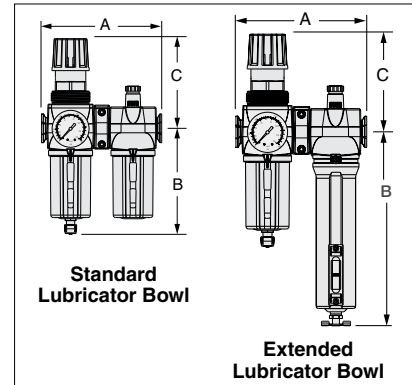
Construction Design	Filter – Fiber or Sintered Bronze Regulator – Diaphragm Lubricator - Sight-Feed	Filter Drain	Internal Automatic or Manual
Temperature	Ambient/Media: Polycarbonate Bowl: 40° to 125°F (4° to 52°C) Metal Bowl: 40° to 175°F (4° to 80°C)	Pressure Gauge	0 to 200 psig (0 to 14 bar); 1/4 NPT gauge ports front and rear
Fluid Media	Compressed air	Oil Adjustment	External; tamper-resistant
Operating Pressure Filter	Float Drain Models Polycarbonate Bowl: 30 to 150 psig (2 to 10 bar) Metal Bowl: 30-200 psig (2 to 14 bar) Manual Drain Models Polycarbonate Bowl: 0 to 150 psig (0 to 10 bar) Metal Bowl: 0-250 psig (0 to 17 bar)	Panel Mounting	2-1/16 inch (52 mm) hole required
Operating Pressure Lubricator	Polycarbonate Bowl: Maximum 150 psig (10 bar) Metal Bowl: Maximum 200 psig (17 bar)	Construction Material	Filter Element: 5-micron rated polyethylene; 5-, 20- or 40-micron rated sintered bronze Filter/Regulator & Lubricator Bodies: Zinc Bowls: Polycarbonate bowl with nylon shatterguard, or aluminum bowl with clear nylon sight glass. Lubricator bowl only: Extended aluminum bowl with clear nylon sight glass Dome: Nylon Sight-Feed Dome: Nylon Seals: Nitrile Valve: Brass
Outlet Pressure	Adjustable up to 200 psig (14 bar); optional adjusting springs		
Optional Pressure Adjustment	Locking Key: Removable		

Modular Integrated Filter/Regulator plus Lubricator Combinations

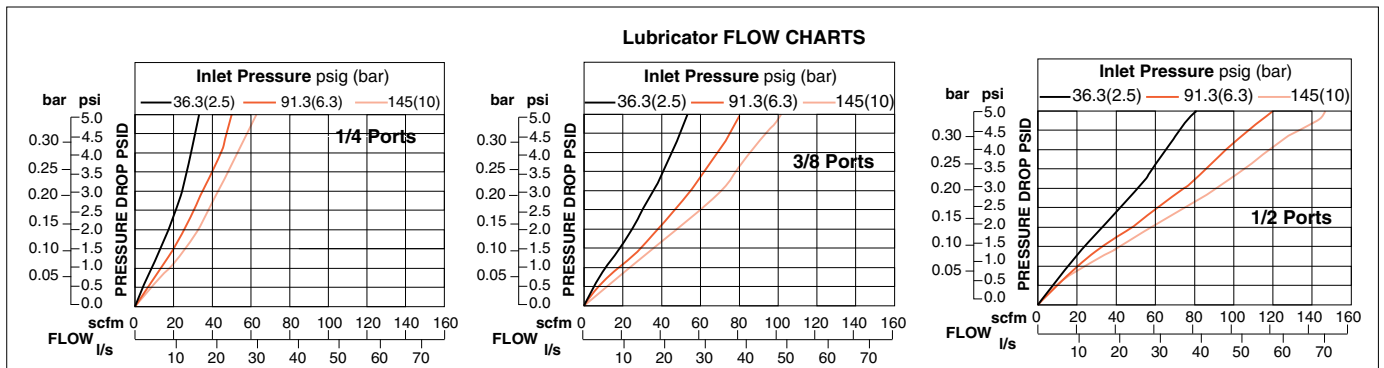
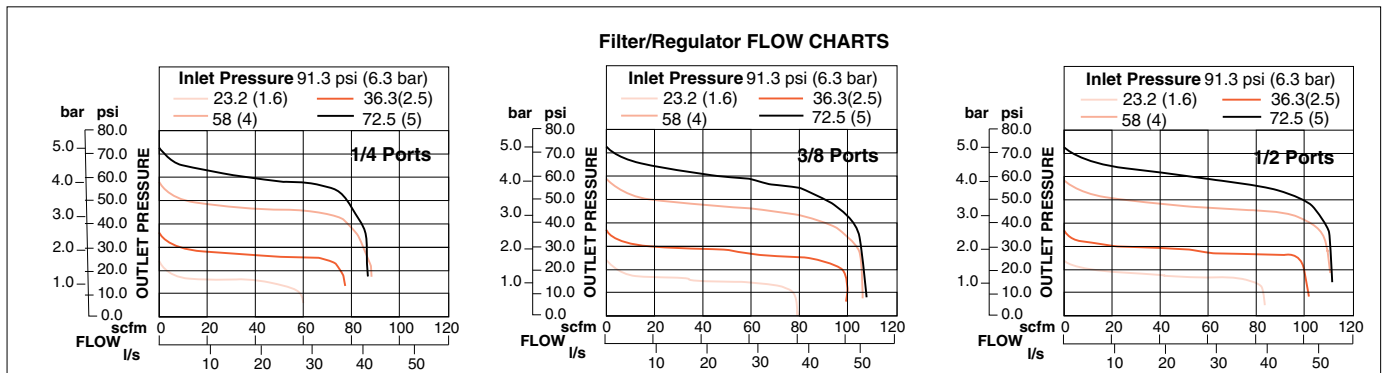
MD3™ Series

Bowl Type	Dimensions inches (mm)				Weight † lb (kg)
	A	B*	C	Depth †	
Polycarbonate	6.46 (164.1)	5.54 (140.6)	4.68 (119)	2.90 (73.7)	4.7 (2.1)
Metal	6.46 (164.1)	6.42 (163.1)	4.68 (119)	2.90 (73.7)	5.1 (2.3)
Extended Metal	6.46 (164.1)	9.37 (238)	4.68 (119)	2.90 (73.7)	5.3 (2.4)

Lockout: With the lockout valve, add 2.3 (58) to dimension A.
 * Bowl (standard) removal clearance: add 3.1 (79)
 * Bowl (extended) removal clearance: add 6.1 (155)
 † Less gauge.



AIR FLOW and CONSTRUCTION DATA



G5

G

Modular Integrated Filter/Regulator plus Lubricator Combinations

FULL-SIZE Series

Port Sizes: 1/4, 3/8, 1/2 & 3/4 – Flow to 140 scfm

Choose your options (in red) to configure your model number.

5E 00 B 2 1 0 5

CONNECTIONS	
NPTF Pipe In, Out, Between	00
NPTF Pipe In & Out, Modular Between	09
Modular, Male Ports In & Out	10
Modular, Female Ports In & Out	11

PIPE SIZE	
1/4	2
3/8	3
1/2	4
3/4	5

Regulator TYPE ADJUSTMENT RANGE	
None	0
0-125 psig (0-8.6 bar)	2
0-50 psig (0-3.4 bar)	4
0-175 psig (0-12 bar)	6

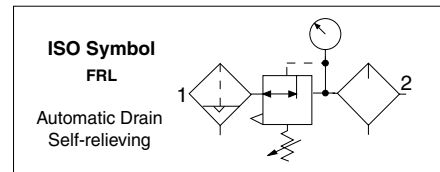
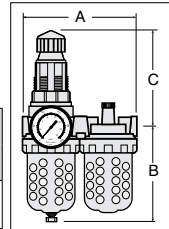
FILTER DRAIN TYPE	
None	0
Automatic Drain, Plastic Bowl	1
Automatic Drain, Metal Bowl	2
Manual Drain, Plastic Bowl	3
Manual Drain, Metal Bowl	4

LUBRICATOR FILL TYPE	
None	0
Sight-Feed, Plastic Bowl	1
Sight-Feed, Metal Bowl	2
Sight-Feed, Plastic Bowl, Quick-Fill Cap	3
Sight-Feed, Metal Bowl, Quick-Fill Cap	4
Wick-Feed, Plastic Bowl	5
Wick-Feed, Metal Bowl	6
Wick-Feed, Plastic Bowl, Quick-Fill Cap	7
Wick-Feed, Metal Bowl, Quick-Fill Cap	8

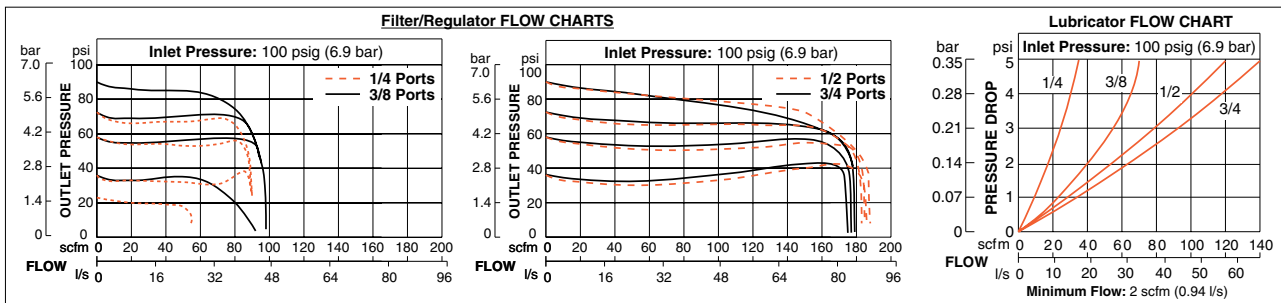


Port Size	Bowl Type	Dimensions* inches (mm)				Weight † lb (kg)
		A	B**	C***	Depth †	
1/4, 3/8, 1/2, 3/4	Polycarbonate 8-oz (240-ml)	6.7 (170)	5.8 (146)	5.8 (146)	3.5 (89)	5.94 (2.69)
	Metal 8-oz (240-ml)	6.7 (170)	6.4 (163)	5.8 (146)	3.5 (89)	5.94 (2.69)

* Dimensions for NPTF Pipe In & Out, Modular Between option; dimensions for other combinations consult ROSS.
 ** Bowl removal clearance: add 3.1 (79).
 *** Dome removal clearance: add 0.63 (16).
 † Less gauge.



REPLACEMENT FILTER ELEMENTS		
Element Rating	Element Material	Model Number
5-µm - Standard	Polyethylene	939K77
5-µm - Optional	Sintered Bronze	R-KA103-03E5
20-µm - Optional	Sintered Bronze	R-KA103-03E4
40-µm - Optional	Sintered Bronze	R-KA103-03E3



Pressure Gauge included. Units with Threaded Ports Include 2 female port blocks.
 Options: External Automatic Drain, refer to page G6.7.
 Accessories ordered separately, refer to page G6.3-4.

STANDARD SPECIFICATIONS (for units on this page):

Construction Design	Filter – Fiber Regulator – Diaphragm Lubricator - Sight-Feed, or Week-Feed	Pressure Adjustment	Locking Key: Removable
Temperature	Ambient/Media: Polycarbonate Bowl: 40° to 125°F (4° to 52°C) Metal Bowl: 40° to 175°F (4° to 80°C)	Filter Drain	Internal Automatic or Manual
Fluid Media	Compressed air	Pressure Gauge	0 to 200 psig (0 to 14 bar); 1/4 NPT gauge ports front and rear
Operating Pressure	Automatic Drain Models Polycarbonate Bowl: Up to 150 psig (up to 10 bar) Metal Bowl: Up to 200 psig (up to 14 bar) Manual Drain Models Polycarbonate Bowl: 0 to 150 psig (0 to 10 bar) Metal Bowl: 0 to 200 psig (0 to 14 bar)	Oil Adjustment	External; tamper-resistant
Outlet Pressure	Adjustable up to 125 psig (9 bar).	Construction Material	Filter Element: 5-micron rated polyethylene Filter/Regulator & Lubricator Bodies: Zinc Bowls: Polycarbonate bowls with steel shatterguard, or zinc bowls with clear nylon sight glasses Regulator Dome: Nylon Regulator Knob: Acetal Sight Dome: Clear Nylon Seals: Nitrile

Modular Integrated Filter/Regulator plus Lubricator Combinations

MD4™ Series

Port Sizes: 3/8, 1/2 & 3/4 – Flow to 205 scfm

Choose your options (in red) to configure your model number.

MD4 **53P** **B** **B** **1** **B** **5** **2** **S** **1**

BOWLS MATERIAL/SIZE	
Polycarbonate Bowls 9-oz (270-ml) - on Filter/Regulator and Lubricator	53P
Metal Bowls 9-oz (270-ml) - on Filter/Regulator and Lubricator	53M
Metal Bowl 9-oz (270-ml) - on Filter/Regulator	
Extended Metal Bowl 15-oz (450-ml) - on Lubricator	53E
Plastic Bowl 9-oz (270-ml) - on Filter/Regulator	
Extended Metal Bowl 15-oz (450-ml) - on Lubricator	53F

ADJUSTMENT RANGE	
0-175 psig (0-12 bar) with 0-200 psig (0-14 bar) gauge	A*
0-125 psig (0-8.6 bar) standard with 0-200 psig (0-14 bar) gauge	B
0-50 psig (0-3.4 bar) with 0-60 psig (0-4 bar) gauge	C
0-20 psig (0-1.4 bar) with 0-60 psig (0-4 bar) gauge	D
Reverse Flow 0-175 psig (0-12 bar) with 0-200 psig (0-14 bar) gauge	F*
Reverse Flow 0-125 psig (0-8.6 bar) standard with 0-200 psig (0-14 bar) gauge	G
Reverse Flow 0-50 psig (0-3.4 bar) with 0-60 psig (0-4 bar) gauge	H
Reverse Flow 0-20 psig (0-1.4 bar) with 0-60 psig (0-4 bar) gauge	J

*Must be ordered with metal bowl.

PIPE SIZE	
3/8 NPTF	3
1/2 NPTF	4
3/4 NPTF	5
3/8 G	C
1/2 G	D
3/4 G	E

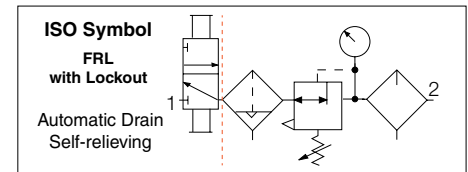
CAP COLOR	
Black	2
Yellow	Y

FILTER REGULATOR DRAIN TYPE	
Automatic Drain	1
Manual Drain	2

FILTER ELEMENT TYPE	
40-µm Sintered Bronze	A
5-µm Polyethylene	B

Lockout Valve	
L-O-X® on outlet side	1
L-O-X® on the inlet side (must also choose Reverse Flow)	2
L-O-X® with EEZ-ON® on outlet side	3
L-O-X® with EEZ-ON® on inlet side (must also choose Reverse Flow)	4
Without Valve - Leave Blank	

LUBRICATOR FILL TYPE	
Quick Fill Cap	Q
Fill Port	S



REPLACEMENT FILTER ELEMENTS		
Element Rating	Element Material	Element Number
5-µm - Standard	Polyethylene	R-A115-106PE5
40-µm - Standard	Sintered Bronze	R-A115-106E3
5-µm - Optional	Sintered Bronze	R-A115-106E5
20-µm - Optional	Sintered Bronze	R-A115-106E4

Options: External Bowl Drains, refer to page G6.7.
Accessories ordered separately, refer to page G6.3-5.

STANDARD SPECIFICATIONS (for units on this page):

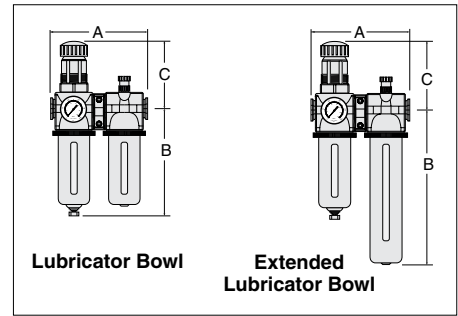
Construction Design	Filter – Fiber, or Sintered Bronze Regulator – Diaphragm Lubricator - Sight-Feed	Pressure Adjustment	Locking Key: Removable
Temperature	Ambient/Media: Polycarbonate Bowl: 40° to 125°F (4° to 52°C) Metal Bowl: 40° to 175°F (4° to 80°C)	Filter Drain	Internal Automatic or Manual
Fluid Media	Compressed air	Pressure Gauge	0 to 200 psig (0 to 14 bar); 1/4 NPT gauge ports front and rear
Operating Pressure	Automatic Drain Models Polycarbonate Bowl: Up to 150 psig (up to 10 bar) Metal Bowl: Up to 200 psig (up to 14 bar) Manual Drain Models Polycarbonate Bowl: 0 to 150 psig (0 to 10 bar) Metal Bowl: 0 to 200 psig (0 to 14 bar)	Oil Adjustment	External; tamper-resistant
Outlet Pressure	Adjustable up to 125 psig (9 bar).	Construction Material	Filter Element: 5-micron rated polyethylene; optional 40-micron element Filter/Regulator & Lubricator Bodies: Zinc Bowls: Aluminum bowl with clear nylon sight glass, polycarbonate bowl with steel shatterguard, or extended aluminum lubricator bowl with clear nylon sight glass Regulator Valve: Brass Sight Dome: Clear Nylon Seals: Nitrile

Modular Integrated Filter/Regulator plus Lubricator Combinations

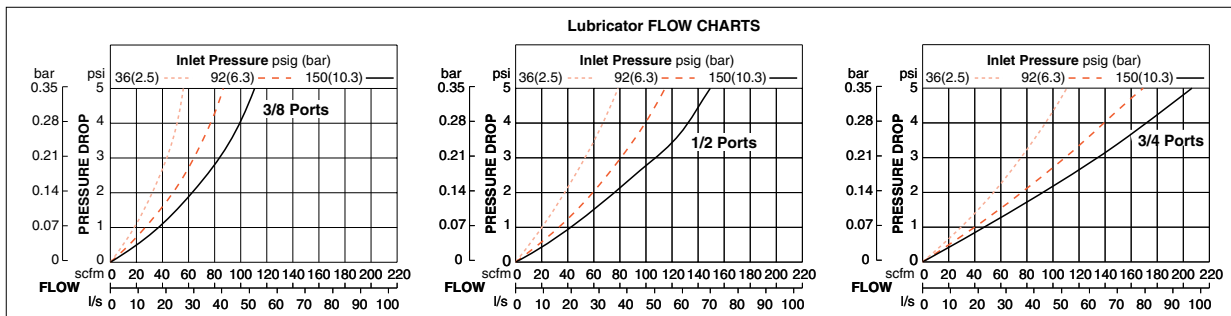
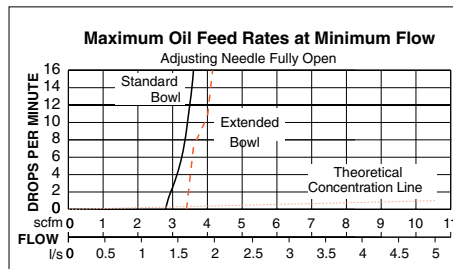
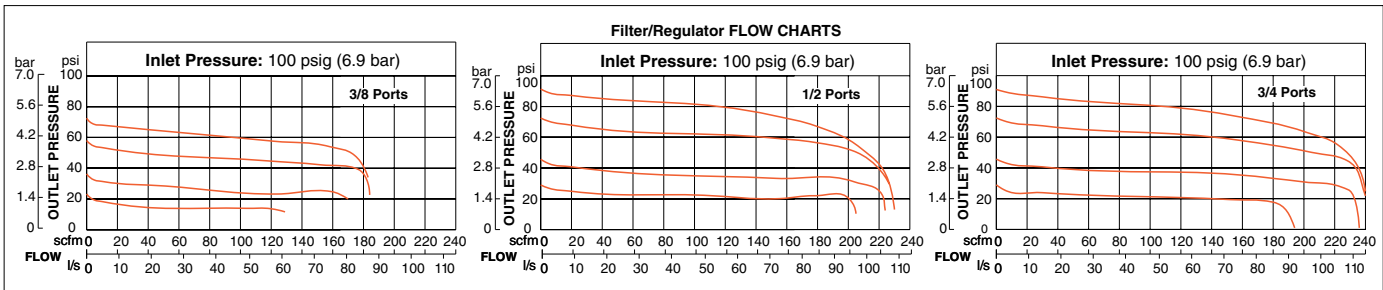
MD4™ Series

Port Size	Bowl Type	Dimensions inches (mm)				Weight † lb (kg)
		A	B*	C	Depth †	
3/8, 1/2, 3/4	Polycarbonate	7.3 (186)	7.7 (195)	5.4 (137)	2.9 (73)	5.81 (2.64)
	Metal	7.3 (186)	7.6 (193)	5.4 (137)	2.9 (73)	5.81 (2.64)
	Extended Metal	7.2 (183)	10.6 (269)	4.68 (119)	5.4 (137)	6.00 (2.73)

Lockout: With the lockout valve, add 2.3 (58) to dimension A.
 * Bowl (standard) removal clearance: add 4.2 (107).
 * Bowl (extended) removal clearance: add 6.1 (155)
 † Less gauge.



AIR FLOW and CONSTRUCTION DATA



G5

G