

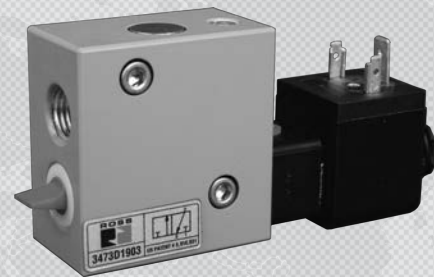
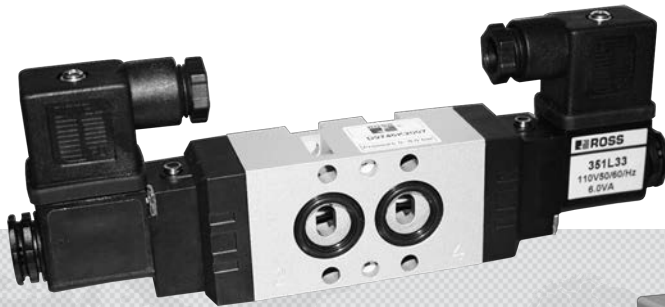


บริษัท ฟลูเทค จำกัด  
**Flu-tech co.,ltd**  
Authorized Distributor

# PRODUCT INFORMATION

## NAMUR INTERFACE VALVES

**95 & 34 SERIES**



**ROSS CONTROLS**

**NAMUR INTERFACE 95 SERIES VALVES – KEY FEATURES**

- Compact in-line ported valve consisting 5/2-way with either solenoid pilot control
- 24 volts DC and 110 volts AC options for solenoid control
- Available port sizes - 1/4"
- Resilient spool & sleeve construction
- High flow capacity
- Pressure ports located in valve body
- Manual override included
- Lube or non-lube service
- Fast response times

**NAMUR INTERFACE 34 SERIES VALVES – KEY FEATURES**

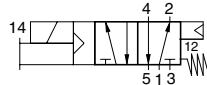
- “Duck-bill” protected exhaust port(s):
  - Limits wash down fluids from entering the valve
  - Minimizes the collection point for contamination
- Corrosion resistant epoxy powder coat
- Solenoid Pilot – Low wattage, fast shifting, repeatable, long life
- Patented Ball-poppet internals - Near zero internal leakage for the life of the valve, self cleaning valve seats, sure shifting
- Faster and more precise operation than a spool valve
- 3/2 Normally Closed

VALVE TYPE/SERIES	PORT SIZES		MAX. FLOW Cv	Page
	CONNECTION	1/4		
<b>95 SERIES</b>				
<b>SOLENOID PILOT CONTROLLED with NAMUR INTERFACE</b>				
5/2			1.3	D5.3
<b>34 SERIES</b>				
<b>SOLENOID PILOT CONTROLLED with NAMUR INTERFACE</b>				
3/2, 52	M12, or EN 175301-803 Form A		0.25	D5.4

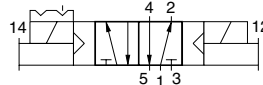
# Solenoid Pilot Controlled Valves

NAMUR Interface  
95 Series

5-Way 2-Position Valves, Single Solenoid, Spring Return				
Port Size	Valve Model Number#		Avg. C <sub>v</sub>	Weight lb (kg)
	NPT Threads	G Threads		
1, 3, 5	9576K2901W	D9576K2901W	1.3	0.80 (0.36)
1/4	9576K2901W	D9576K2901W	1.3	0.80 (0.36)

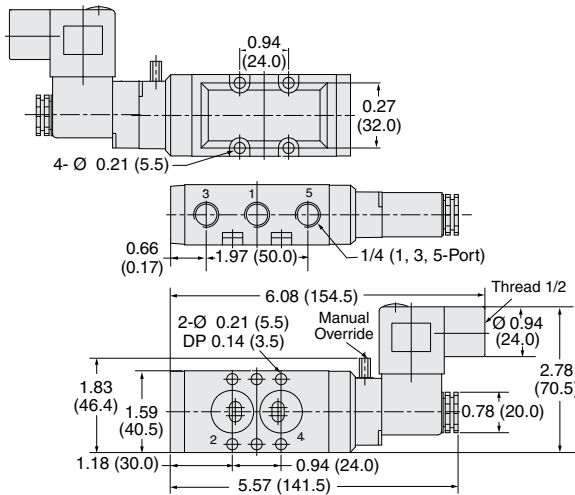


5-Way 2-Position Valves, Double Solenoid, Detented				
Port Size	Valve Model Number#		Avg. C <sub>v</sub>	Weight lb (kg)
	NPT Threads	G Threads		
1, 3, 5	9576K2902W	D9576K2902W	1.3	1.04 (0.47)
1/4	9576K2902W	D9576K2902W	1.3	1.04 (0.47)

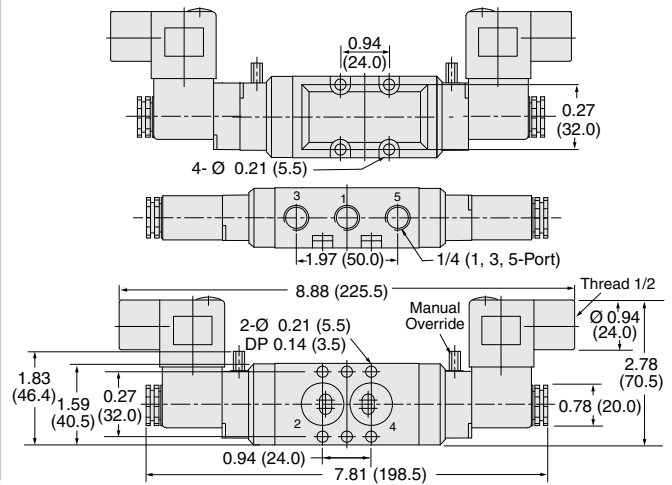


# Voltage: W=24 VDC; Z=110-120 VAC, 50/60 Hz, e.g., 9576K2901Z.

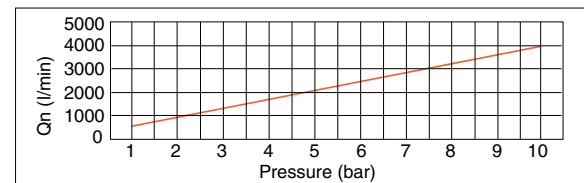
## Valve Dimensions – inches (mm) Single Solenoid Valve



## Double Solenoid Valve



## FLOW CHART



D

## ACCESSORIES & OPTIONS

Electrical Connectors			
Connector Form	Port Size	Model Number*	
		24 Volts DC	110 Volts AC
EN 175301-803 Form B	1/4	1767L77	1781L77

\*3-Pin Electrical Connectors with LED & Surge Suppressor



Silencers		
Port Size	Threads	Model Number
1/4	Male - NPT	5500A2003
	Male - G	D5500A2003



D5

For other options, consult ROSS.

Valves available with installed prewired connectors, please consult ROSS.

## STANDARD SPECIFICATIONS (for valves on this page):

Construction Design	Spool	Temperature	Ambient/Media: 41° to 140°F (5° to 60°C)
Mounting Type	In-line	Flow Media	Filtered air
Solenoids	AC or DC power; Rated for continuous duty	Pilot Supply	Internal
Voltage	24 volts DC; 110 volts AC, 50/60 Hz	Operating Pressure	22.5 to 150 psig (1.5 to 10 bar)
Power Consumption (each solenoid)	2.5 watts on DC; 5.5 VA holding on 50/60 Hz	Construction Material	Valve Body: Bar Stock Aluminum Spool: Stainless Steel Seals: Buna-N
Enclosure Rating	IP 65, IEC 60529	Manual Override	Pushbutton, non-locking
Electrical Connection	EN 175301-803 Industrial Form B connector		

**IMPORTANT NOTE:** Please read carefully and thoroughly all of the **CAUTIONS, WARNINGS** on the inside back cover.

# Solenoid Pilot Controlled Valves

# NAMUR Interface Washdown 34 Series

## 3-Way 2-Position Valves, Spring Return

Electrical Connection	Valve Model Number#*	Avg. C <sub>v</sub>	Mounting Bolts	Weight lb (kg)
	NPT Threads			
M12	3473D1904W	0.25	10-32	0.8 (0.3)
EN 175301-803 Form A	3473D1900W	0.25	10-32	0.8 (0.3)

# Voltage: W=24 VDC; Z=110-120 VAC, 50/60 Hz, e.g., 3473D190Z. For other voltages, consult ROSS.  
\*Note: 10-24 and M5 mounting fasteners available upon request.



Model shown with M12 electrical connector

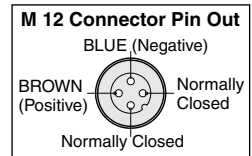


Model shown with EN electrical connector

## 5-Way 2-Position Valves, Spring Return

Electrical Connection	Valve Model Number#*	Avg. C <sub>v</sub>	Mounting Bolts	Weight lb (kg)
	NPT Threads			
M12	3476C1904W	0.25	10-32	0.9 (0.4)
EN 175301-803 Form A	3476C1900W	0.25	10-32	0.9 (0.4)

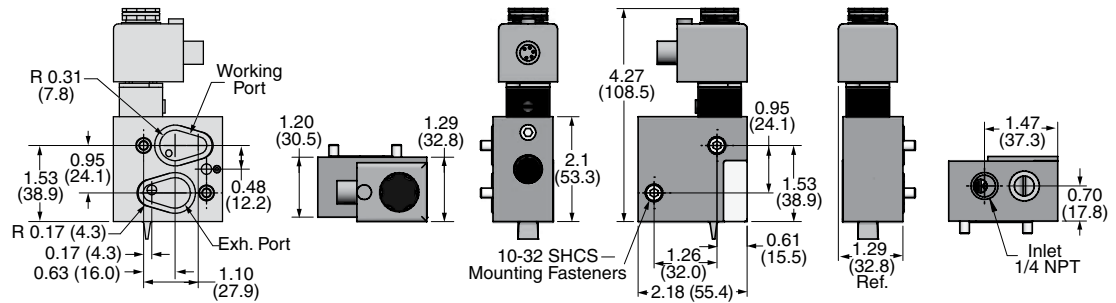
# Voltage: W=24 VDC; Z=110-120 VAC, 50/60 Hz, e.g., 3476C1904Z. For other voltages, consult ROSS.  
\*Note: 10-24 and M5 mounting fasteners available upon request.



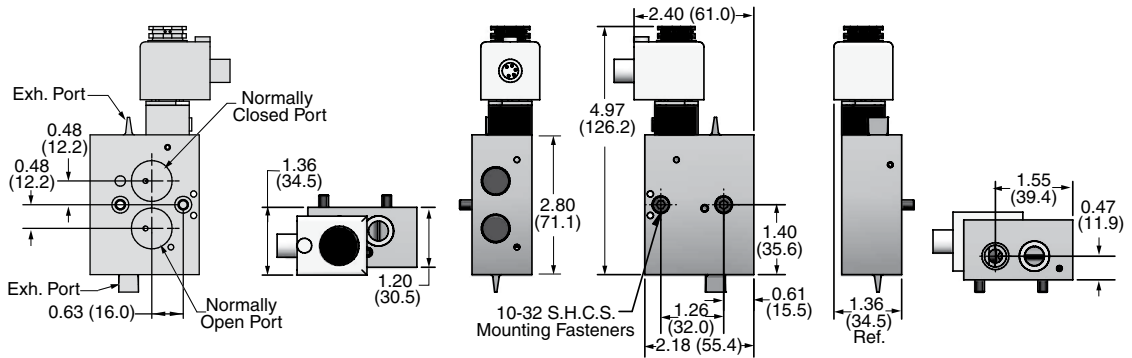
### Valve Dimensions – inches (mm)

D

3/2 Valves



5/2 Valves



D5

### STANDARD SPECIFICATIONS (for valves on this page):

Construction	Spool	Flow Media	Filtered air
Mounting Type	In-line	Pilot Supply	Internal
Solenoids	AC or DC power; Rated for continuous duty	Operating Pressure	29 to 116 psig (2 to 8 bar)
Voltage	24 volts DC; 110-120 volts AC, 50/60 Hz	Construction Material	Valve Body: Bar Stock Aluminum Spool: Stainless Steel Seals: Buna-N
Power Consumption (each solenoid)	0.7 watts on DC;	Standard	NEMA 4X (enclosure constructed for indoor or outdoor use to provide a degree of protection to personnel against incidental contact with the enclosed equipment; and also provides protection in highly corrosive environments.
Enclosure Rating	IP 65, IEC 60529		
Electrical Connection	EN 175301-803 Form A connector, or M12		
Temperature	Ambient/Media: 4° to 122°F (-10° to 50°C) For temperatures below 40°F (4°C) air must be free of water vapor to prevent formation of ice.		

**IMPORTANT NOTE:** Please read carefully and thoroughly all of the **CAUTIONS, WARNINGS** on the inside back cover.

# CAUTIONS, WARNINGS And STANDARD WARRANTY

ROSS OPERATING VALVE, ROSS CONTROLS®, ROSS DECCO®, and AUTOMATIC VALVE INDUSTRIAL, collectively the “ROSS Group”.

## PRE-INSTALLATION or SERVICE

1. Before servicing a valve or other pneumatic component, be sure all sources of energy are turned off, the entire pneumatic system is shut down and exhausted, and all power sources are locked out (ref: OSHA 1910.147, EN 1037).
2. All ROSS Group Products, including service kits and parts, should be installed and/or serviced only by persons having training and experience with pneumatic equipment. Because any product can be tampered with and/or need servicing after installation, persons responsible for the safety of others or the care of equipment must check ROSS Group Products on a regular basis and perform all necessary maintenance to ensure safe operating conditions.
3. All applicable instructions should be read and complied with before using any fluid power system to prevent harm to persons or equipment. In addition, overhauled or serviced valves must be functionally tested prior to installation and use. If you have any questions, call your nearest ROSS Group location.
4. Each ROSS Group Product should be used within its specification limits. In addition, use only ROSS Group components to repair ROSS Group Products.

**WARNINGS:** Failure to follow these instructions can result in personal injury and/or property damage.

## FILTRATION and LUBRICATION

1. Dirt, scale, moisture, etc., are present in virtually every air system. Although some valves are more tolerant of these contaminants than others, best performance will be realized if a filter is installed to clean the air supply, thus preventing contaminants from interfering with the proper performance of the equipment. The ROSS Group recommends a filter with a 5-micron rating for normal applications.
2. All standard ROSS Group filters and lubricators with polycarbonate plastic bowls are designed for compressed air applications only. Use the metal bowl guard, where provided, to minimize danger from high pressure fragmentation in the event of bowl failure. Do not expose these products to certain fluids, such as alcohol or liquefied petroleum gas, as they can cause bowls to rupture, creating a combustible condition and hazardous leakage. Immediately replace crazed, cracked, or deteriorated bowls.
3. Only use lubricants which are compatible with materials used in the valves and other components in the system. Normally, compatible lubricants are petroleum base oils with oxidation inhibitors, an aniline

point between 180°F (82°C) and 220°F (104°C), and an ISO 32, or lighter, viscosity. Avoid oils with phosphate type additives which can harm polyurethane components, potentially leading to valve failure which risks personal injury, and/or damage to property.

**WARNINGS:** Failure to follow these instructions can result in personal injury and/or property damage.

## AVOID INTAKE/EXHAUST RESTRICTION

1. Do not restrict air flow in the supply line. To do so could reduce the pressure of the supply air below minimum requirements for the valve and thereby causing erratic action.
2. Do not restrict a valve's exhaust port as this can adversely affect its operation. Exhaust silencers must be resistant to clogging and must have flow capacities at least as great as the exhaust capacities of the valves. Contamination of the silencer can result in reduced flow and increased back pressure.

**WARNINGS:** Failure to follow these instructions can result in personal injury and/or property damage.

## SAFETY APPLICATIONS

1. Mechanical Power Presses and other potentially hazardous machinery using a pneumatically controlled clutch and brake mechanism must use a press control double valve with a monitoring device. A double valve without a self-contained monitoring device should be used only in conjunction with a control system which assures monitoring of the valve. All double valve installations involving hazardous applications should incorporate a monitoring system which inhibits further operation of the valve and machine in the event of a failure within the valve mechanism.
2. Safety exhaust (dump) valves without a self-contained monitoring device should be used only in conjunction with a control system which assures monitoring of the valve. All safety exhaust valve installations should incorporate a monitoring system which inhibits further operation of the valve and machine in the event of a failure within the valve mechanism.
3. Per specifications and regulations, the ROSS L-O-X® and L-O-X® with EEZ-ON®, N06 and N16 Series operation products are defined as energy isolation devices, NOT AS EMERGENCY STOP DEVICES.

**WARNINGS:** Failure to follow these instructions can result in personal injury and/or property damage.

## STANDARD WARRANTY

All products sold by the ROSS Group are warranted for a one-year period [with the exception of Filters, Regulators and Lubricators (“FRLs”) which are warranted for a period of seven (7) years] from the date of purchase. All products are, during their respective warranty periods, warranted to be free of defects in material and workmanship. The ROSS Group’s obligation under this warranty is limited to repair, replacement or refund of the purchase price paid for products which the ROSS Group has determined, in its sole discretion, are defective. All warranties become void if a product has been subject to misuse, misapplication, improper maintenance, modification or tampering. Products for which warranty protection is sought must be returned to the ROSS Group freight prepaid.

THE WARRANTY EXPRESSED ABOVE IS IN LIEU OF AND EXCLUSIVE OF ALL OTHER WARRANTIES AND THE ROSS GROUP EXPRESSLY DISCLAIMS ALL OTHER WARRANTIES EITHER EXPRESSED OR IMPLIED WITH RESPECT TO MERCHANTABILITY OR FITNESS FOR A PARTICULAR PURPOSE. THE ROSS GROUP MAKES NO WARRANTY WITH RESPECT TO ITS PRODUCTS MEETING THE PROVISIONS OF ANY GOVERNMENTAL OCCUPATIONAL SAFETY AND/OR HEALTH LAWS OR REGULATIONS. IN NO EVENT IS THE ROSS GROUP LIABLE TO PURCHASER, USER, THEIR EMPLOYEES OR OTHERS FOR INCIDENTAL OR CONSEQUENTIAL DAMAGES WHICH MAY RESULT FROM A BREACH OF THE WARRANTY DESCRIBED ABOVE OR THE USE OR MISUSE OF THE PRODUCTS. NO STATEMENT OF ANY REPRESENTATIVE OR EMPLOYEE OF THE ROSS GROUP MAY EXTEND THE LIABILITY OF THE ROSS GROUP AS SET FORTH HEREIN.



**บริษัท ฟลูเทค จำกัด**  
**FLU-TECH CO.,LTD**

**845/3-4 หมู่ 3 ถ.เทพารักษ์ ต.เทพารักษ์ อ.เมือง จ.สมุทรปราการ 10270**

845/3-4 Thepharak RD., T.Thepharak, A.Muang, Samutprakarn 10270 THAILAND  
Tel. 0 2384 6060, Fax 0 2384 5701, Email : [pneumatic@flutech.co.th](mailto:pneumatic@flutech.co.th), [www.flutech.co.th](http://www.flutech.co.th)