



PRODUCT INFORMATION

ISO 5599-2 VALVES

W65 SERIES



ROSS CONTROLS

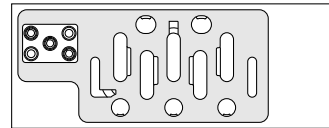
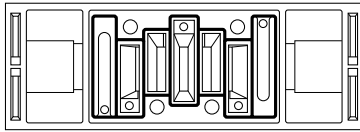
ISO W60, W64, & W65 SERIES VALVES – KEY FEATURES

- ISO Sizes 1, 2, & 3
- 5/2 Single, 5/2 Double, & 5/3 Double Solenoid Pilot & Pressure Controlled Valves
- Available with Buna-N and Fluoroelastomer seals for a wide temperature and resistance range
- W60 Series - Precision Finish Stainless Steel Spool & Sleeve internals that provide high shifting speed, long life, non-lube service, and easy maintenance
- W64 Series - Poppet construction is highly tolerant to dirty air
- W65 Series - Precision Finish Stainless Steel Spool & Sleeve internals that provide high shifting speed, long life, non-lube service, and easy maintenance
 - Serial Bus Communication compatible
 - Plug-In valve to base electrical connector eliminates need to disconnect wires to remove valve

Standard Definitions

5599-1: Drop-cord Standards for Sizes 1, 2, 3

5599-2: Plug-in Standards for Size 1, 2, 3

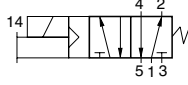


VALVE TYPE	VALVE SERIES	DESCRIPTION			AVAILABLE PORT SIZES							FUNCTIONS					Max Flow (Cv)	Solenoid Control	Direct Solenoid Control	Pressure Control	Page		
		ISO Size	Spool & Sleeve	Poppet	1/8	1/4	3/8	1/2	3/4	1	1 1/4	1 1/2	3/2 Single	5/2 Single	5/2 Double	5/3 Closed Center						5/3 Open Center	5/3 Pressure Center
ISO 5599-1	W60	1																	0.8				C2.3 - C2.7
	W60	2																	1.9				C2.3 - C2.7
	W60	3																	3.8				C2.3 - C2.7
	W64	1																	1.0				C2.3 - C2.7
	W64	2																	2.0				C2.3 - C2.7
	W64	3																	4.0				C2.3 - C2.7
Single Sub-Bases & Manifold Bases																					C2.8 - C2.9		
Manifold Kits & Accessories																					C2.9 - C2.11		
ISO 5599-2	W65	1																	0.8				C2.12 - C2.14
	W65	2																	1.9				C2.12 - C2.14
	W65	3																	3.8				C2.12 - C2.14
Sub-Bases & Modular Manifold Bases																					C2.15		
Accessories for Sub-Bases & Modular Manifold Bases																					C2.16		
Single Sub-Bases & Modular Manifold Bases																					C2.17		
End Station Kits & Accessories																					C2.18 - C2.19		

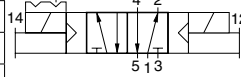
Solenoid Pilot Controlled Valves

ISO 5599-2
W65 Series

5-Way 2-Position Valves, Single Solenoid Pilot Controlled, Spring Return				
ISO Size	Port Size	Valve Model Number#*	Avg. C _v	Weight lb (kg)
1	1/4 - 3/8	W6576A2401W	1.0	1.5 (0.7)
2	3/8 - 1/2	W6576A3401W	2.3	2.0 (1.0)
3	1/2 - 3/4	W6576A4401W	3.4	3.5 (1.6)



5-Way 2-Position Valves, Double Solenoid Pilot Controlled, Detented				
ISO Size	Port Size	Valve Model Number#*	Avg. C _v	Weight lb (kg)
1	1/4 - 3/8	W6576A2407W	1.0	2.0 (1.0)
2	3/8 - 1/2	W6576A3407W	2.3	2.5 (1.2)
3	1/2 - 3/4	W6576A4407W	3.4	4.0 (1.9)



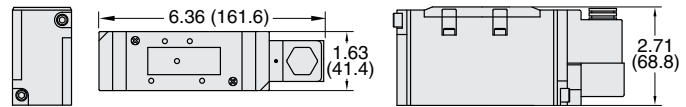
#Voltage: W=24 VDC; Z=110-120 VAC, 50/60 Hz, e.g., W6576A2401Z. For other voltages, consult ROSS.

* Sub-bases and manifold bases ordered separately, refer to page C2.15 or page C2.18 when used with serial bus system.

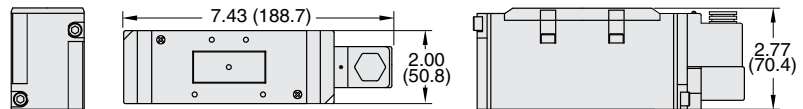
Valve Dimensions – inches (mm)

Single Solenoid

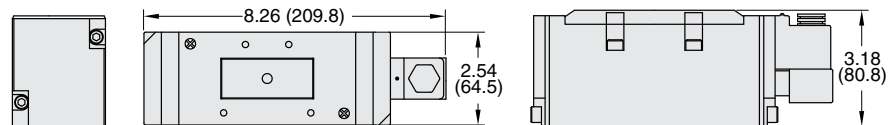
ISO Size 1



ISO Size 2

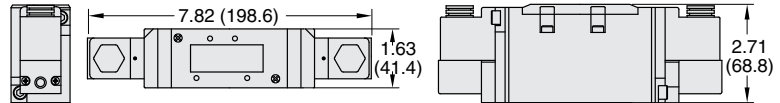


ISO Size 3

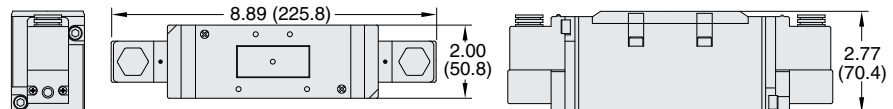


Double Solenoid

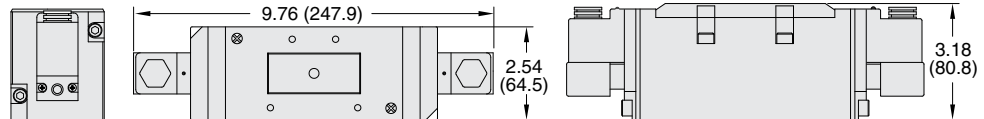
ISO Size 1



ISO Size 2



ISO Size 3



Accessories ordered separately, refer to page C2.16 thru C2.19 when used with serial bus system.

The W65 Series has a base electrical connector which eliminates the need to disconnect wires to remove the valve. This eliminates drop cords, simplifies maintenance and connection to Serial Data Communication systems.

STANDARD SPECIFICATIONS (for valves on this page):

Construction Design	Spool and Sleeve	Operating Pressure	ISO Size 1: 30 to 150 psig (2 to 10 bar) ISO Size 2 & 3: 15 to 150 psig (1 to 10 bar) All sizes also available up to 232 psig (16 bar)
Mounting Type	Base		Pilot Supply - Internal or External: Minimum 30 psig (2 bar) <i>When external pilot supply, pressure must be equal to or greater than inlet pressure.</i>
Solenoid	Rated for continuous duty	Indicator Light	Included, one per solenoid
Voltages	24 volts DC; 110-120 volts AC, 50/60 Hz	Construction Material	Valve Body: Cast Aluminum Spool: Stainless Steel Seals: Buna-N
Power Consumption (each solenoid)	3.5 watts on DC (at 10 bar); 6.5 VA holding on 50 or 60 Hz	Manual Override	Flush; Metal, non-locking
Temperature	Ambient: 40° to 120°F (4° to 50°C) Media: 40° to 175°F (4° to 80°C) <i>For other temperature ranges, consult ROSS.</i>		
Flow Media	Filtered air		
Pilot Supply	Internal or External; Selected automatically		

IMPORTANT NOTE: Please read carefully and thoroughly all of the **CAUTIONS, WARNINGS** on the inside back cover.

Solenoid Pilot Controlled Valves

5-Way 3-Position Valves, Double Solenoid Pilot Controlled						
ISO Size	Port Size	Valve Model Number#*			Avg. C _v	Weight lb (kg)
		Power Center	Closed Center	Open Center		
1	1/4 - 3/8	W6577A2902W	W6577A2401W	W6577A2407W	1.0	2.0 (1.0)
2	3/8 - 1/2	W6577A3901W	W6577A3401W	W6577A3407W	2.3	2.5 (1.2)
3	1/2 - 3/4	W6577A4900W	W6577A4401W	W6577A4407W	3.4	4.0 (1.9)

Power Center	Closed Center	Open Center

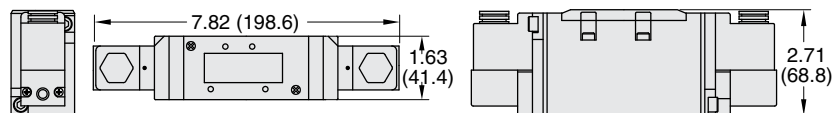


#Voltage: W=24 VDC; Z=110-120 VAC, 50/60 Hz, e.g., W6577A2902W. For other voltages, consult ROSS.

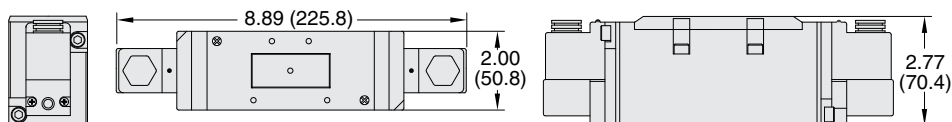
* Sub-bases and manifold bases ordered separately, refer to page C2.15 or page C2.18 when used with serial bus system.

Valve Dimensions – inches (mm)

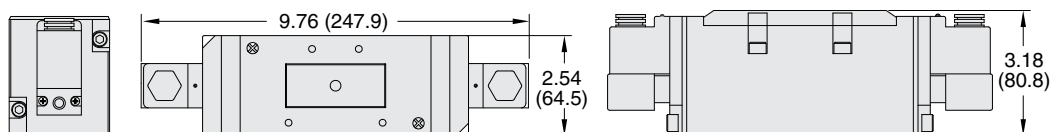
ISO Size 1



ISO Size 2



ISO Size 3



Accessories ordered separately, refer to page C2.16 thru C2.19 when used with serial bus system.

The W65 Series has a base electrical connector which eliminates the need to disconnect wires to remove the valve. This eliminates drop cords, simplifies maintenance and connection to Serial Data Communication systems.

STANDARD SPECIFICATIONS (for valves on this page):

Construction Design	Spool and Sleeve	Operating Pressure	ISO Size 1: 30 to 150 psig (2 to 10 bar) ISO Size 2 & 3: 15 to 150 psig (1 to 10 bar) All sizes also available up to 232 psig (16 bar)
Mounting Type	Base		Pilot Supply - Internal or External: Minimum 30 psig (2 bar) <i>When external pilot supply, pressure must be equal to or greater than inlet pressure.</i>
Solenoids	Rated for continuous duty	Indicator Light	Included, one per solenoid
Voltage	24 volts DC; 110-120 volts AC, 50/60 Hz	Construction Material	Valve Body: Cast Aluminum Spool: Stainless Steel Seals: Buna-N
Power Consumption (each solenoid)	3.5 watts on DC (at 10 bar); 6.5 VA holding on 50 or 60 Hz	Manual Override	Flush; Metal, non-locking
Temperature	Ambient: 40° to 120°F (4° to 50°C) Media: 40° to 175°F (4° to 80°C) <i>For other temperature ranges, consult ROSS.</i>		
Flow Media	Filtered air		
Pilot Supply	Internal or External; Selected automatically		

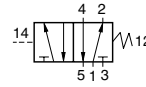
IMPORTANT NOTE: Please read carefully and thoroughly all of the CAUTIONS, WARNINGS on the inside back cover.

Pressure Controlled Valves

ISO 5599-2
W65 Series

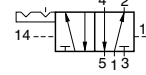
5-Way 2-Position Valves, Single Pressure Controlled, Spring Return

ISO Size	Port Size	Valve Model Number*	Avg. C _v	Weight lb (kg)
1	1/4 - 3/8	W6556A2411	1.0	0.8 (0.4)
2	3/8 - 1/2	W6556A3411	2.3	1.5 (0.7)
3	1/2 - 3/4	W6556A4411	3.4	3.0 (1.4)



5-Way 2-Position Valves, Double Pressure Controlled, Detented

ISO Size	Port Size	Valve Model Number*	Avg. C _v	Weight lb (kg)
1	1/4 - 3/8	W6556A2417	1.0	0.8 (0.4)
2	3/8 - 1/2	W6556A3417	2.3	1.5 (0.7)
3	1/2 - 3/4	W6556A4417	3.4	3.0 (1.4)



5-Way 3-Position Valves, Double Pressure Controlled

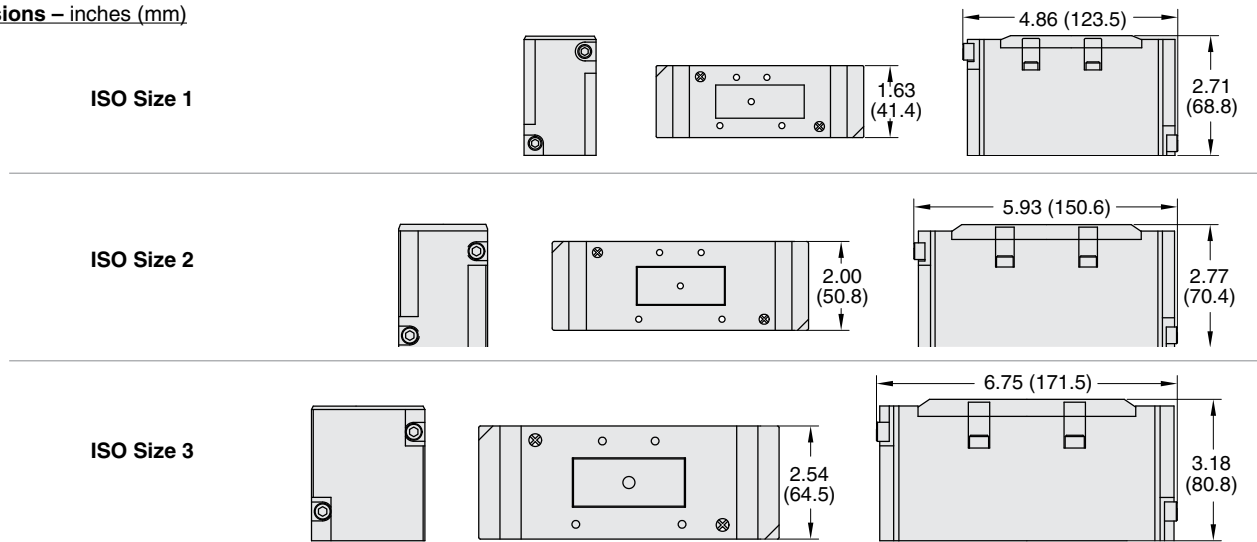
ISO Size	Port Size	Valve Model Number*			Avg C _v	Weight lb (kg)
		Power Center	Closed Center	Open Center		
1	1/4 - 3/8	—	W6557A2411	W6557A2417	1.0	0.8 (0.4)
2	3/8 - 1/2	W6557A3901	W6557A3411	W6557A3417	2.3	1.5 (0.7)
3	1/2 - 3/4	W6557A4900	W6557A4411	W6557A4417	3.4	3.0 (1.4)

 Power Center	 Closed Center	 Open Center
-------------------------	--------------------------	------------------------



* Sub-bases and manifold bases ordered separately, refer to page C2.15 or page C2.18 when used with serial bus system.

Valve Dimensions – inches (mm)



Accessories ordered separately, refer to page C2.16 thru C2.19 when used with serial bus system.

STANDARD SPECIFICATIONS (for valves on this page):

Construction Design	Spool and Sleeve	Operating Pressure	ISO Size 1: 30 to 150 psig (2 to 10 bar) ISO Size 2 & 3: 15 to 150 psig (1 to 10 bar) All sizes also available up to 232 psig (16 bar)
Mounting Type	Base		Pilot Supply: Minimum 30 psig (2 bar) Pilot supply pressure must be equal to or greater than inlet pressure.
Temperature	Ambient/Media: 40° to 175°F (4° to 80°C) For other temperature ranges, consult ROSS.	Construction Material	Valve Body: Cast Aluminum Spool: Stainless Steel Seals: Buna-N
Flow Media	Filtered air		
Pilot Supply	External		

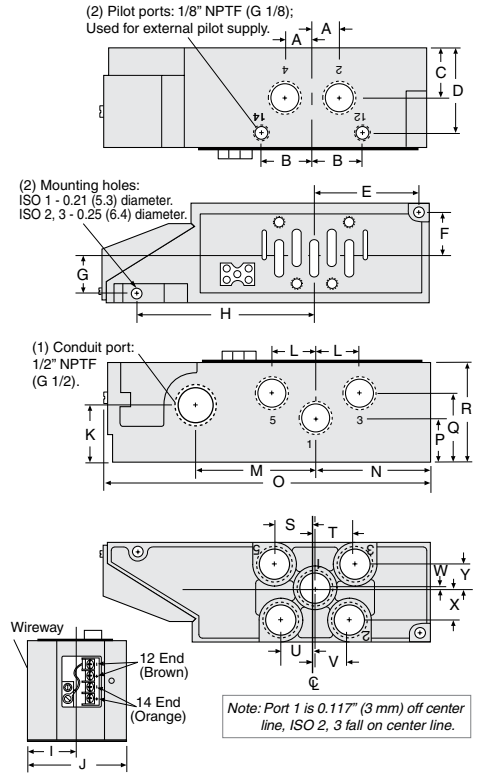
IMPORTANT NOTE: Please read carefully and thoroughly all of the **CAUTIONS, WARNINGS** on the inside back cover.

Sub-Bases & Modular Manifold Bases

Side and Bottom-Ported Sub-Bases

ISO Size	Port Threads	Port Size	Sub-Base Model Number
1	NPT	1/4 Side	949N91
	NPT	1/4 Side/Bottom	971N91
	NPT	3/8 Side	950N91
	NPT	3/8 Side/Bottom	972N91
	G	1/4 Side	D949N91
	G	3/8 Side	D950N91
2	NPT	3/8 Side	951N91
	NPT	3/8 Side/Bottom	952N91
	NPT	1/2 Side	953N91
	NPT	1/2 Side/Bottom	954N91
	G	1/2 Side	D953N91
3	NPT	1/2" Side	955N91
	NPT	1/2" Side/Bottom	956N91
	NPT	3/4" Side	957N91
	NPT	3/4" Side/Bottom	958N91
	G	1/2 Side	D955N91
	G	1/2 Side/Bottom	D956N91
	G	3/4 Side	D957N91
	G	3/4 Side/Bottom	D958N91

Dimensions inches (mm)			
	ISO 1	ISO 2	ISO 3
A	0.5 (13)	0.6 (16)	0.8 (21)
B	1.0 (26)	1.3 (33)	1.8 (45)
C	0.8 (21)	1.2 (31)	1.3 (34)
D	1.5 (38)	1.9 (49)	2.7 (70)
E	1.6 (39)	2.3 (57)	2.5 (63)
F	0.9 (23)	1.1 (29)	1.5 (39)
G	0.9 (23)	1.1 (29)	1.4 (36)
H	3.6 (92)	4.3 (108)	5.4 (137)
I	1.1 (29)	1.4 (35)	1.8 (45)
J	2.3 (58)	2.8 (70)	3.5 (90)
K	0.9 (24)	1.5 (37)	1.8 (47)
L	0.9 (22)	1.1 (27)	1.5 (38)
M	2.4 (60)	3.0 (75)	4.1 (104)
N	1.8 (46)	2.5 (64)	2.7 (69)
O	6.5 (164)	7.8 (197)	9.3 (235)
P	0.8 (21)	1.1 (28)	1.3 (34)
Q	1.3 (34)	1.7 (44)	2.0 (51)
R	1.9 (47)	2.4 (60)	3.3 (85)
S	0.8 (21)	1.1 (27)	1.6 (42)
T	1.1 (27)	1.1 (27)	1.6 (42)
U	0.5 (13)	0.9 (22)	1.1 (27)
V	0.6 (15)	0.9 (22)	1.1 (27)
W	0.3 (8)	0.1 (3)	0.8 (20)
X	0.7 (17)	0.8 (20)	0.8 (20)
Y	0.6 (16)	0.9 (20)	0.8 (20)



C2

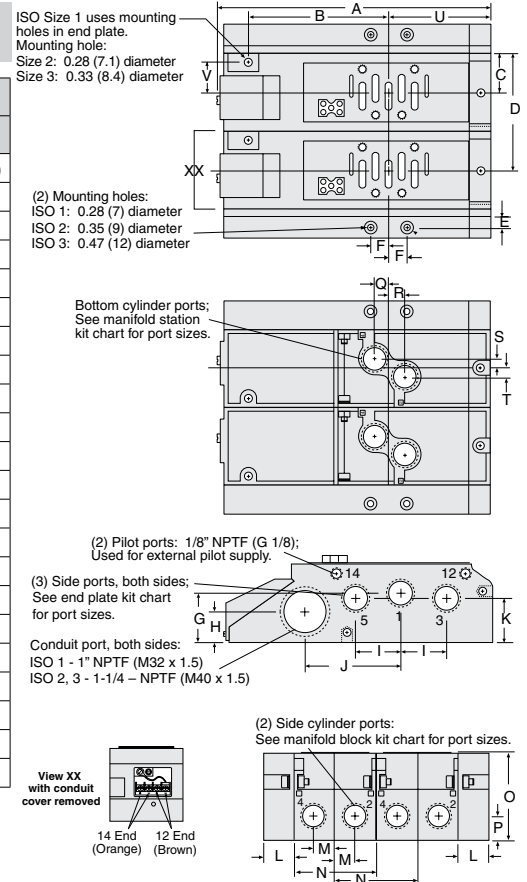
C

Bottom and End-Ported Manifold Bases

Each manifold station assembly includes a manifold assembly, socket head screws, nuts and seals. Each end station kit includes left and right end plates, socket head screws, nuts and seals.

Manifold Station Assembly			
ISO Size	Port Size	Model Number	
		NPT Threads	G Threads
1	1/4" End/Bottom	959N91	D959N91
	3/8" End/Bottom	960N91	D960N91
2	3/8" End/Bottom	961N91	D961N91
	1/2" End/Bottom	962N91	D962N91
3	1/2" End/Bottom	963N91	D963N91
	3/4" End/Bottom	964N91	D964N91

Dimensions inches (mm)			
	ISO 1	ISO 2	ISO 3
A	7.2 (183)	9.0 (229)	10.6 (270)
B	4.9 (125)	6.0 (152)	7.1 (180)
C	1.0 (26)	1.3 (33)	1.7 (43)
D	3.1 (79)	3.9 (100)	5.1 (128)
E	0.6 (14)	0.6 (16)	0.6 (15)
F	0.6 (14)	0.7 (17)	1.0 (26)
G	1.3 (34)	1.7 (42)	1.8 (46)
H	1.0 (25)	1.2 (30)	1.2 (31)
I	1.1 (28)	1.4 (35)	2.1 (52)
J	2.5 (64)	3.1 (79)	4.1 (104)
K	1.2 (31)	1.6 (40)	1.7 (42)
L	0.9 (22)	1.0 (25)	1.2 (30)
M	0.5 (13)	0.6 (16)	0.8 (21)
N	2.1 (53)	2.6 (67)	3.4 (86)
O	2.2 (55)	2.6 (66)	3.1 (78)
P	0.6 (16)	0.9 (22)	0.8 (20)
Q	0.5 (13)	0.6 (15)	0.7 (18)
R	0.5 (13)	0.6 (15)	0.8 (21)
S	0.3 (7)	0.3 (8)	0.5 (13)
T	0.3 (7)	0.3 (8)	0.5 (12)
U	2.0 (51)	2.8 (67)	3.1 (79)
V	-----	1.0 (26)	1.3 (31)



End Station Kit			
ISO Size	Port Size	Model Number	
		NPT Threads	G Threads
1	3/8"	493N86	D493N86
2	1/2"	494N86	D494N86
3	1"	495N86	D495N86

Assembled manifolds also available, consult ROSS.

IMPORTANT NOTE: Please read carefully and thoroughly all of the **CAUTIONS, WARNINGS** on the inside back cover.

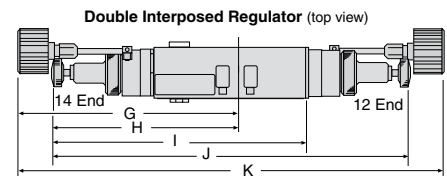
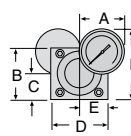
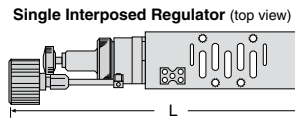
Accessories

NOTE: Accessories from this page are to be used only with sub-bases and manifolds on page A2.14-15.

Interposed Regulators

The interposed regulator controls the pressure through the base-mounted valve. These interposed devices are “sandwich” style, mounting between a valve and base or manifold. When using a dual interposed regulator for a W65 Series solenoid valve, the valve **must be externally piloted (port 14)**.

WARNING: Double interposed regulators will reverse output ports, the 12 solenoid will pressurize the 4 port, the 14 solenoid will pressurize the 2 port which may cause unexpected, potentially dangerous cylinder movement at valve pressurization.



ISO Size	Model Number	Dimensions inches (mm)											
		A	B	C	D	E	F	G	H	I	J	K	L
1 – Single	965N91	1.6 (39)	1.8 (45)	0.9 (23)	1.7 (43)	0.9 (22)	2.5 (63)	6.2 (157)	7.2 (182)	8.0 (204)	11.6 (295)	13.6 (345)	9.0 (229)
1 – Double	966N91	1.6 (39)	1.8 (45)	0.9 (23)	1.7 (43)	0.9 (22)	2.5 (63)	6.2 (157)	7.2 (182)	8.0 (204)	11.6 (295)	13.6 (345)	9.0 (229)
2 – Single	967N91	1.6 (39)	1.8 (45)	0.9 (23)	2.0 (51)	1.0 (26)	2.5 (63)	6.5 (166)	7.5 (191)	9.0 (229)	12.6 (320)	14.6 (370)	10.0 (254)
2 – Double	968N91	1.6 (39)	1.8 (45)	0.9 (23)	2.0 (51)	1.0 (26)	2.5 (63)	6.5 (166)	7.5 (191)	9.0 (229)	12.6 (320)	14.6 (370)	10.0 (254)
3 – Single	969N91	2.1 (52)	2.7 (67)	1.3 (34)	2.6 (66)	1.3 (33)	3.4 (85)	9.5 (242)	8.0 (203)	10.6 (270)	18.2 (463)	15.2 (386)	13.0 (330)
3 – Double	970N91	2.1 (52)	2.7 (67)	1.3 (34)	2.6 (66)	1.3 (33)	3.4 (85)	9.5 (242)	8.0 (203)	10.6 (270)	18.2 (463)	15.2 (386)	13.0 (330)

Flow Control Kits

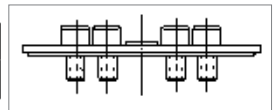
The interposed flow control independently adjusts the speed of a cylinder’s extend and retract motions. This action is achieved by throttling the flow of exhaust air through ports 3 and 5 by means of a separate needle valve across each of these ports. These interposed devices are “sandwich” style, mounting between a valve and a base or manifold.

ISO Size	Model Number	Dimensions inches (mm)		
		A	B	C
1	1371N77	0.9 (24)	3.8 (97)	1.7 (43)
2	1372N77	1.3 (33)	5.1 (130)	2.0 (51)
3	1373N77	1.6 (41)	5.6 (142)	2.6 (66)

Blank Station Kits

A blank station plate is used to cover the top of a manifold station not in use.

ISO Size	1	2	3
Kit Number	1381N77	1382N77	1383N77



Blocking Disk Kits

A blocking disk closes the ports between manifold stations.

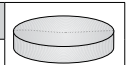
ISO Size	1	2	3
Kit Number	1376N77	1378N77	1380N77



Pilot Port Blocking Plug

The pilot blocking plug blocks the pilot ports between manifold stations.

ISO Size	1	2	3
Kit Number	1375N77	1377N77	1379N77



Transition Plates

To bank different manifold sizes together.

Left Manifold ISO Size	Right Manifold ISO Size	Model Number
1	2	1387N77
2	1	1388N77
2	3	1389N77
3	2	1390N77

Silencers

Port Size	Thread Type	Model Number		Avg. Cv	Dimensions inches (mm)		Weight lb (kg)
		NPT Threads	R/Rp Threads		Width	Length	
1/4	Male	5500A2003	D5500A2003	1.2	0.9 (21)	2.2 (55)	0.1 (0.1)
3/8	Male	5500A3013	D5500A3013	2.7	0.9 (21)	2.2 (55)	0.1 (0.1)
1/2	Male	5500A4003	D5500A4003	4.7	1.3 (32)	3.6 (91)	0.2 (0.1)
1	Male	5500A6003	D5500A6003	14.6	2.0 (51)	5.4 (138)	0.6 (0.3)



Pressure Range: 0 to 290 psig (0 to 20 bar) maximum. **Flow Media:** Filtered air.

IMPORTANT NOTE: Please read carefully and thoroughly all of the **CAUTIONS, WARNINGS** on the inside back cover.

Manifold Bases & End Station Kits for ISO Size 1 & 2

for ISO 5599-2 Valves
W65 Series

Manifold Bases for ISO Size 1 & 2

Choose your options (in red) to configure your model number.

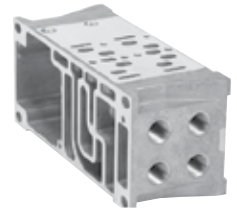
RPSHU11 **5** **8** **M** **1** **P**

ISO Size	Model
ISO 1	RPSHU11
ISO 2	RPSHU11

ISO Size	Port Size	Option
ISO 1	3/8 NPT	5
	3/8 BSPP	6
ISO 2	1/2 NPT	7
	1/2 BSPP	8

Circuit Board Address Configuration	
Interconnect, Single Address	J
Interconnect, Double Address	M

Gasket Options	
1, 3, 5 Ports Open and Pilots Open	1
1, 3, 5 Ports Closed and Pilots Open	2
1 Port Closed, 3, 5 Ports Open and Pilots Closed	3
1 Port Open, 3, 5 Ports Closed and Pilots Open	4
1, 3, 5 Ports Open and Pilots Closed	5
1, 3, 5 Ports Closed and Pilots Closed	6
1 Port Closed, 3, 5 Ports Open and Pilots Closed	7
1 Port Open, 3, 5 Ports Closed and Pilots Open	8



C2

C

End Station Kits for ISO Size 1 & 2

Choose your options (in red) to configure your model number.

RPSHU20 **L2** **1** **0** **P**

Valve Type	
Plug-in (Internal Pilot)	RPSHU20
Plug-in (External Pilot)	RPSHU2X

Thread Type	
NPT	0
G	1*

*G thread type conforms to ISO 1179-1 w 228-1 threads.

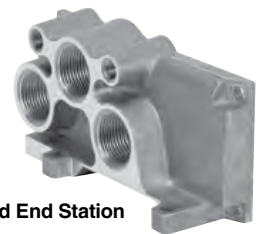
Left Hand End Plate Type	
25-Pin-D-Sub (top)#	L2
Industrial Communication	
ROSS Serial Bus	L6^
Turck BL67 with Valve Driver Module - For 16 Outputs	T1*
Turck BL67 with Valve Driver Module - For 32 Outputs	T2*

RPSHU11 gaskets included in each end station kit.
^ Valve Driver Module and 24 Output Cable installed. Must order communication modules separately. Must Order Bases with Circuit Boards.
* Turck Network and P2M Ethernet node communication module ordered separately.

Right Hand End Station Ports	
1/2 Exhaust and Inlet Ports	1
3/4 Exhaust and Inlet Ports	2



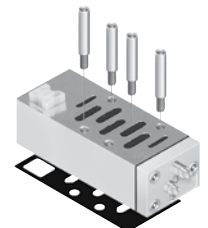
Left Hand End Station
25-pin D-Sub (top)



Hi-Flow - Right Hand End Station

Remote Pilot Access Plate Kits

ISO Size	Port Size	Kit Number		Description
		NPT Threads	G Threads	
1	1/8"	RPS401500CP	RPS401501CP	Kit includes: Pilot Port Access Plate, Gasket and Mounting Studs.
2	1/8"	RPS411500CP	RPS411501CP	
3	1/8"	RPS421500CP	RPS421501CP	



Blank Station Kits

ISO Size	Kit Number	Description
1	RPS4034CP	Kit includes: Blank Station Plate, Gasket, and Mounting Bolts.
2	RPS4134CP	
3	RPS4234CP	



IMPORTANT NOTE: Please read carefully and thoroughly all of the **CAUTIONS, WARNINGS** on the inside back cover.

Manifold Bases & End Station Kits for ISO Size 3, Plate and Blank Station Kits

for ISO 5599-2 Valves
W65 Series

Manifold Bases for ISO Size 3

Choose your options (in red) to configure your model number.

RPS4211 69 M C P

Basic Series
ISO 3 RPS4211

Mounting Base Style / Port Size	
Manifold Base: 3/4 NPT Bottom / End Port	69
Manifold Base: 3/4 G Bottom / End Port	60*

* G ISO 1179 specifications.

Enclosures / Lead Length	
Circuit Board, Single Address	J†
Circuit Board, Double Address	M†
† Not Available with Sub-Base Kits.	
Note: When using the Enclosure / Lead Length "J" or "M" option: 12 volts DC - Maximum number of coils is 13 24 volts DC - Maximum number of coils is 21 120 volts AC - Coils limited by the number of pins available in the connector (25-Pin D-Sub = 24 coils, 19-Pin Brad Harrison = 16, 12-Pin M23 = 8) 240 volts AC - Must use "A" or "C" Option, Lead Wires or Terminal Blocks	

End Station Kits for ISO Size 3

Choose your options (in red) to configure your model number.

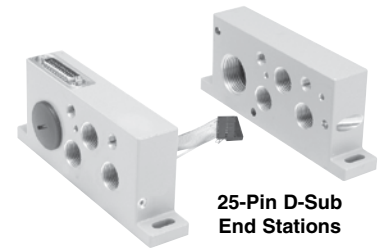
RPS42 20 L2 0 C P

Basic Series
ISO Size 3 5599 RPS42

Revision Level

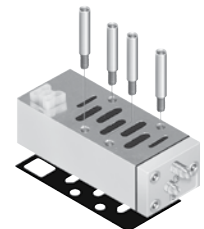
Thread Type	
NPT	0
G	1

Options	
25-Pin, D-Sub	L2††
Industrial Communication	
ROSS Serial Bus Communication	L6^†
16 Outputs - Turck Serial Bus Communication Module	T1*
32 Outputs - Turck Serial Bus Communication Module	T2*
† Only Available with End Station Kit Type "20". ‡ RPSHU11 gaskets included in each end plate kit. ^ Valve Driver Module and 24 Output Cable Installed. Must order communication modules separately. + Must Order Bases with Circuit Boards. * Turck Network and P2M Ethernet node communication module ordered separately.	



Remote Pilot Access Plate Kits

ISO Size	Port Size	Kit Number		Description
		NPT Threads	G Threads	
1	1/8"	RPS401500CP	RPS401501CP	Kit includes: Pilot Port Access Plate, Gasket and Mounting Studs.
2	1/8"	RPS411500CP	RPS411501CP	
3	1/8"	RPS421500CP	RPS421501CP	



Blank Station Kits

ISO Size	Kit Number	Description
1	RPS4034CP	Kit includes: Blank Station Plate, Gasket, and Mounting Bolts.
2	RPS4134CP	
3	RPS4234CP	



IMPORTANT NOTE: Please read carefully and thoroughly all of the **CAUTIONS, WARNINGS** on the inside back cover.

Accessories

for ISO 5599-2 Valves
W65 Series

Interposed Pressure Regulators

Choose your options (in red) to configure your model number.

RPS4038 **1** **6** **6** **C** **P**

Basic Series	
ISO Size 1	5599-2 RPS4038
ISO Size 2	55992 RPS4138
ISO Size 3	5599-2 RPS4238

Regulator Function	
Common Pressure Regulator	1
Independent Pressure Regulator	2
Selector Regulator	3

#4 Port Regulator / Gauge*	
0**	Line By-Pass Plate
1	1-30 psig w/o Gauge
2	2-60 psig w/o Gauge
3	5-125 psig w/o Gauge
4	1-30 psig w/Gauge
5	2-60 psig w/Gauge
6	5-125 psig w/Gauge
C	Air Pilot w/60 psig Gauge
D	Air Pilot w/160 psig Gauge

* For Common Pressure Regulator Option, Regulator Gauge callout must be the same number for both Port #4 and Port #2. (Example: 166)

** Pressure Line By-Pass Option can only be used with Independent and Selector Regulators (Option 2 & 3 in Interposed Block Function).

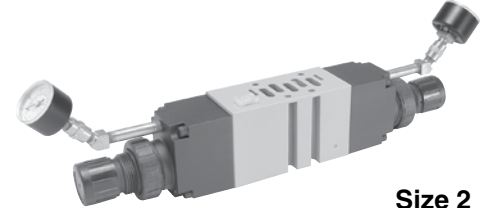
#2 Port Regulator / Gauge*	
0**	Line By-Pass Plate
1	1-30 psig w/o Gauge
2	2-60 psig w/o Gauge
3	5-125 psig w/o Gauge
4	1-30 psig w/Gauge
5	2-60 psig w/Gauge
6	5-125 psig w/Gauge
C	Air Pilot w/60 psig Gauge
D	Air Pilot w/160 psig Gauge

* For Common Pressure Regulator Option, Regulator Gauge callout must be the same number for both Port #4 and Port #2. (Example: 166)

** Pressure Line By-Pass Option can only be used with Independent and Selector Regulators (Option 2 & 3 in Interposed Block Function).



Size 1
(Dual Interposed Regulator Shown)



Size 2
(Dual Interposed Regulator Shown)

C2

C

Ordering Components

- Manifold Base or Sub-Base Kit required
- Interposed Regulator Kit configured for Internal Pilot as standard
- Order valve as External Pilot

How to Configure Interposed Regulator / Valve Combinations

Internal Pilot Configuration - Pressure in Base Port 1 feeds regulator configured for Internal Pilot which feeds valve configured for External Pilot.

External Pilot Configuration - Size 1, Size 2, Size 3

An External Pilot pressure in Port 12 or 14 of the base feeds thru the Interposed Regulator 12 or 14 galley directly to the 12/14 pilot of the valve.

This configuration takes an External Pilot from the 12 port of the base and passes it thru the regulator to feed the 12 galley of the valve.

WARNING: Double interposed regulators will reverse output ports, the 12 solenoid will pressurize the 4 port, the 14 solenoid will pressurize the 2 port which may cause unexpected, potentially dangerous cylinder movement at valve pressurization.

Gauge Adapter Kit

Description	Model Number
Gauge Kit	RPS5651160P
1/8" Female to 1/8" Female Coupling	R207P-2*
1/8" Male to 1/8" Male Long Nipple	RVS215PNL-2-15*

* Included in Gauge Kit RPS5651160P.

Included with all Size 00 Regulators. Both kits are required on all Size 0 & 00 Regulators when the Regulator is on the last Station on the Right (14) End.



Interposed Flow Controls

ISO Size	Model Number
1	RPS4035CP
2	RPS4135CP
3	RPS4235CP

Both adjustment screws are located on the 12 end of the unit.

Interposed Flow Control mounts with its own studs, which means the valve uses standard bolts for mounting.

Interposed Flow Control is not to be used as a shut off device and is not bubble tight when needles are fully turned down.

A Interposed Flow Control and Common Port Interposed Regulator may be sandwiched together on a Manifold or Sub-Base. The Interposed Flow Control MUST be located between the manifold/Sub-Base and the Common Port Interposed Regulator.

Silencers

Port Size	Thread Type	Model Number		Avg. C _v	Dimensions inches (mm)		Weight lb (kg)
		NPT Threads	R/Rp Threads		Width	Length	
3/8	Male	5500A3013	D5500A3013	2.7	0.9 (21)	2.2 (55)	0.1 (0.1)
1/2	Male	5500A4003	D5500A4003	4.7	1.3 (32)	3.6 (91)	0.2 (0.1)
3/4	Male	5500A5013	D5500A5013	5.1	1.3 (32)	3.6 (91)	0.2 (0.1)



Pressure Range: 0 to 290 psig (0 to 20 bar) maximum. **Flow Media:** Filtered air.

IMPORTANT NOTE: Please read carefully and thoroughly all of the **CAUTIONS, WARNINGS** on the inside back cover.