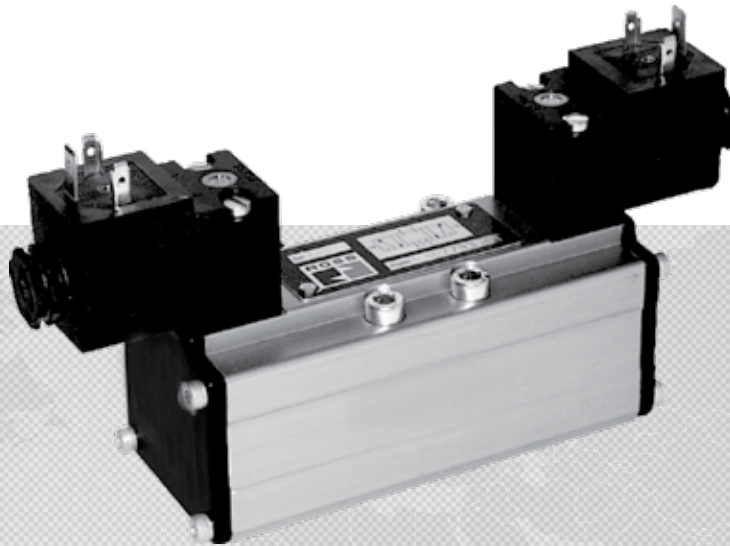




PRODUCT INFORMATION

ISO 5599-1 VALVES W60 SERIES

BASE MOUNTED



ROSS CONTROLS

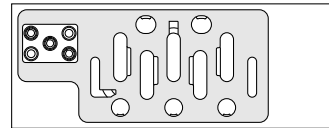
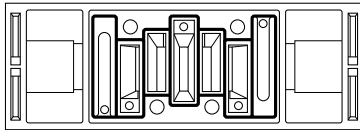
ISO W60, W64, & W65 SERIES VALVES – KEY FEATURES

- ISO Sizes 1, 2, & 3
- 5/2 Single, 5/2 Double, & 5/3 Double Solenoid Pilot & Pressure Controlled Valves
- Available with Buna-N and Fluoroelastomer seals for a wide temperature and resistance range
- W60 Series - Precision Finish Stainless Steel Spool & Sleeve internals that provide high shifting speed, long life, non-lube service, and easy maintenance
- W64 Series - Poppet construction is highly tolerant to dirty air
- W65 Series - Precision Finish Stainless Steel Spool & Sleeve internals that provide high shifting speed, long life, non-lube service, and easy maintenance
 - Serial Bus Communication compatible
 - Plug-In valve to base electrical connector eliminates need to disconnect wires to remove valve

Standard Definitions

5599-1: Drop-cord Standards for Sizes 1, 2, 3

5599-2: Plug-in Standards for Size 1, 2, 3

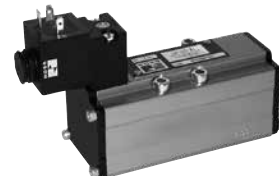
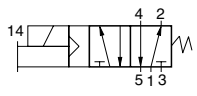


VALVE TYPE	VALVE SERIES	DESCRIPTION			AVAILABLE PORT SIZES							FUNCTIONS					Page					
		ISO Size	Spool & Sleeve	Poppet	1/8	1/4	3/8	1/2	3/4	1	1¼	1½	3/2 Single	5/2 Single	5/2 Double	5/3 Closed Center		5/3 Open Center	5/3 Pressure Center	Max Flow (Cv)	Solenoid Control	Direct Solenoid Control
ISO 5599-1	W60	1																0.8				C2.3 - C2.7
	W60	2																1.9				C2.3 - C2.7
	W60	3																3.8				C2.3 - C2.7
	W64	1																1.0				C2.3 - C2.7
	W64	2																2.0				C2.3 - C2.7
	W64	3																4.0				C2.3 - C2.7
Single Sub-Bases & Manifold Bases																					C2.8 - C2.9	
Manifold Kits & Accessories																					C2.9 - C2.11	
ISO 5599-2	W65	1																0.8				C2.12 - C2.14
	W65	2																1.9				C2.12 - C2.14
	W65	3																3.8				C2.12 - C2.14
Sub-Bases & Modular Manifold Bases																					C2.15	
Accessories for Sub-Bases & Modular Manifold Bases																					C2.16	
Single Sub-Bases & Modular Manifold Bases																					C2.17	
End Station Kits & Accessories																					C2.18 - C2.19	

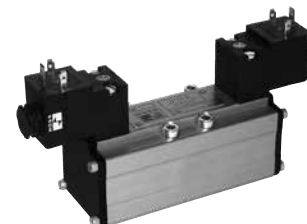
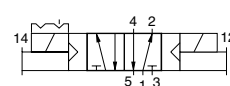
Solenoid Controlled Valves



5-Way 2-Position Valves, Single Solenoid Pilot Controlled, Spring Return							
ISO Size	Port Size	Valve Model Number#*	Avg. C _v	Average Response Constants**			Weight lb (kg)
				M	F		
					In-Out	Out-Exh.	
1	1/8 - 3/8	W6076B2401W	0.8	29	3.5	4.9	1.5 (0.7)
2	3/8 - 1/2	W6076B3401W	1.9	41	1.5	2.4	2.3 (1.1)
3	1/2 - 3/4	W6076B4401W	3.8	51	0.8	1.1	3.5 (1.6)



5-Way 2-Position Valves, Double Solenoid Pilot Controlled, Detented							
ISO Size	Port Size	Valve Model Number#*	Avg. C _v	Average Response Constants**			Weight lb (kg)
				M	F		
					In-Out	Out-Exh.	
1	1/8 - 3/8	W6076B2407W	0.8	17	3.5	4.9	1.8 (0.9)
2	3/8 - 1/2	W6076B3407W	1.9	20	1.5	2.5	2.7 (1.2)
3	1/2 - 3/4	W6076E4407W	3.8	20	0.8	1.1	3.9 (1.8)



C2

C

#Voltage: W=24 VDC; Z=110-120 VAC, 50/60 Hz, e.g., W6076B2401Z. For other voltages, consult ROSS.

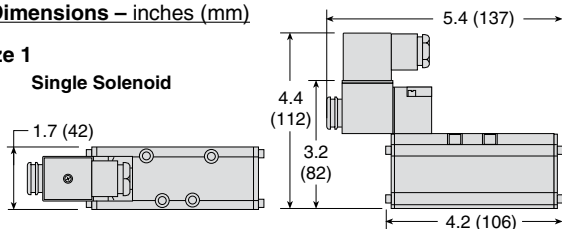
* Sub-bases and manifold bases ordered separately, refer to page C2.8-9.

** Valve Response Time – Response Time (msec) = M + (F • V). This is the average time required to fill a volume V (cubic inches) to 90% of supply pressure or to exhaust it to 10% of supply pressure. M and F values are shown above.

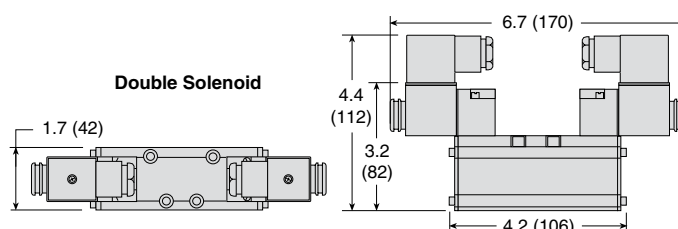
Valve Dimensions – inches (mm)

ISO Size 1

Single Solenoid

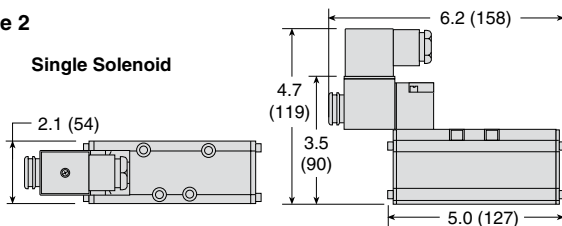


Double Solenoid

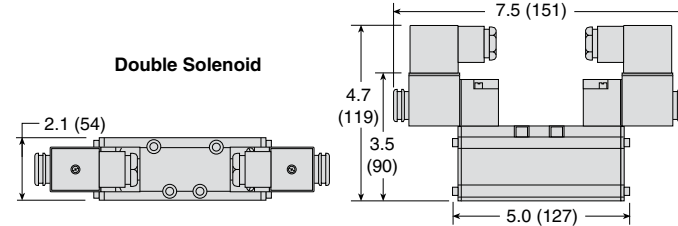


ISO Size 2

Single Solenoid

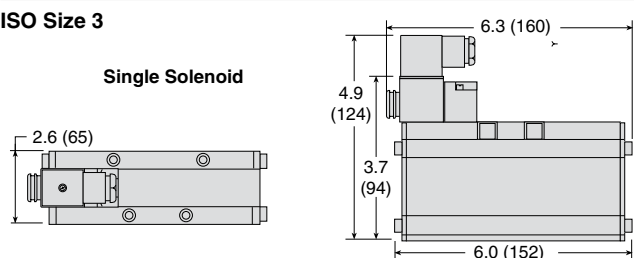


Double Solenoid

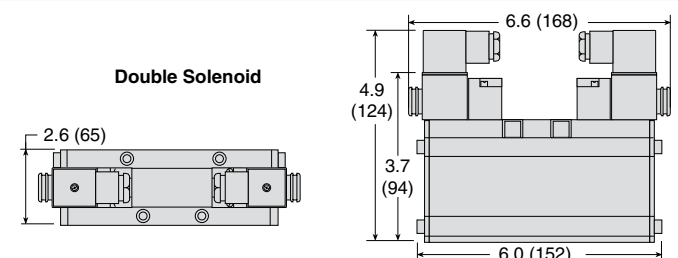


ISO Size 3

Single Solenoid



Double Solenoid



Options: Indicator Light (in electrical connectors), refer to page C2.11. Accessories ordered separately, refer to page C2.10-11.

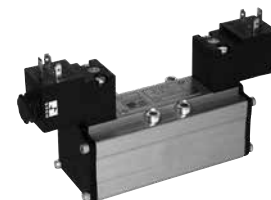
STANDARD SPECIFICATIONS (for valves on this page):

Construction Design	Spool and Sleeve	Flow Media	Filtered air
Mounting Type	Base	Pilot Supply	Internal or External; Selected automatically
Solenoids	Rated for continuous duty	Operating Pressure	Vacuum to 150 psig (10 bar)
Voltage	24 volts DC; 110 volts AC, 50 Hz; 120 volts AC, 50/60 Hz		Pilot Supply - Internal or External: ISO Size 1: Minimum 30 psig (2 bar) ISO Size 2 & 3: Minimum 15 psig (1 bar)
Power Consumption (each solenoid)	5.8 watts nominal on AC and DC; 6.5 watts maximum on AC and DC	Construction Material	When external pilot supply, pressure must be equal to or greater than inlet pressure.
Enclosure Rating	IP65, IEC 60529		Valve Body: Bar Stock Aluminum Spool: Stainless Steel Seals: Buna-N
Electrical Connections	EN 175301-803 Form A connector	Manual Override	Flush; Metal, non-locking
Temperature	Ambient: 40° to 120°F (4° to 50°C)		
	Media: 40° to 175°F (4° to 80°C)		
	For other temperature ranges, consult ROSS.		

IMPORTANT NOTE: Please read carefully and thoroughly all of the **CAUTIONS, WARNINGS** on the inside back cover.

Solenoid Pilot Controlled Valves

ISO 5599-1
W60 Series



5-Way 3-Position Valves, Double Solenoid Pilot Controlled									
ISO Size	Port Size	Valve Model Number#*			Avg. C _v	Average Response Constants**			Weight lb (kg)
		Power Center	Closed Center	Open Center		M	F		
						In-Out	Out-Exh.		
1	1/8 - 3/8	W6077A2951W	W6077B2401W	W6077B2407W	0.8	30	3.5	5.0	1.8 (0.9)
2	3/8 - 1/2	W6077A3945W	W6077B3401W	W6077B3407W	1.9	40	1.5	2.5	2.8 (1.3)
3	1/2 - 3/4	W6077B4934W	W6077B4401W	W6077B4407W	3.8	50	0.8	1.1	4.0 (1.8)

Power Center

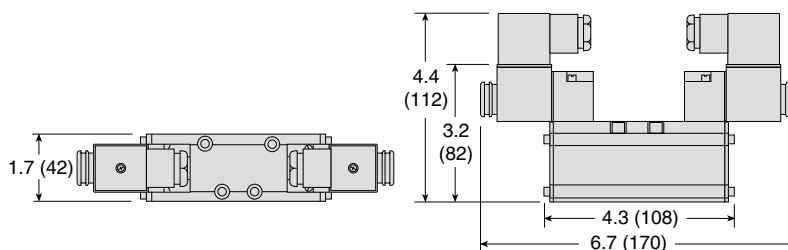
Closed Center

Open Center

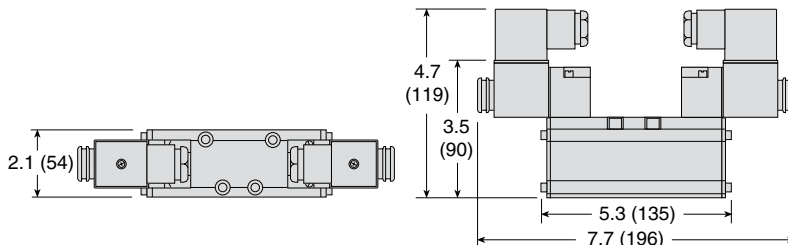
#Voltage: W=24 VDC; Z=110-120 VAC, 50/60 Hz, e.g., W6077A2951Z. For other voltages, consult ROSS.
 * Sub-bases and manifold bases ordered separately, refer to page C2.8-9.
 ** Valve Response Time – Response Time (msec) = M + (F • V). This is the average time required to fill a volume V (cubic inches) to 90% of supply pressure or to exhaust it to 10% of supply pressure. M and F values are shown above.

Valve Dimensions – inches (mm)

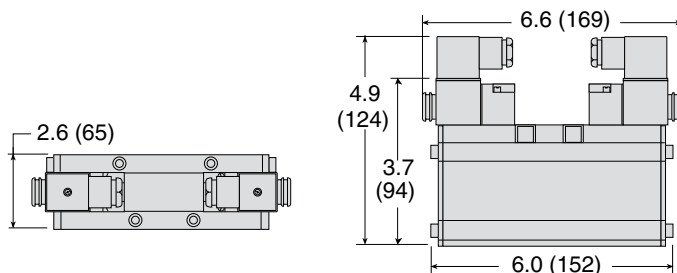
ISO Size 1



ISO Size 2



ISO Size 3



Options: Indicator Light (in electrical connectors), refer to page C2.11. Accessories ordered separately, refer to page C2.10-11.

STANDARD SPECIFICATIONS (for valves on this page):

Construction Design	Spool and Sleeve	Flow Media	Filtered air
Mounting Type	Base	Pilot Supply	Internal or External; Selected automatically
Solenoids	Rated for continuous duty	Operating Pressure	Vacuum to 150 psig (10 bar)
Voltage	24 volts DC; 110 volts AC, 50 Hz; 120 volts AC, 50/60 Hz		Pilot Supply - Internal or External: ISO Size 1: Minimum 30 psig (2 bar) ISO Size 2 & 3: Minimum 15 psig (1 bar) <i>When external pilot supply, pressure must be equal to or greater than inlet pressure.</i>
Power Consumption (each solenoid)	5.8 watts nominal on AC and DC; 6.5 watts maximum on AC and DC	Construction Material	Valve Body: Bar Stock Aluminum Spool: Stainless Steel Seals: Buna-N
Enclosure Rating	IP65, IEC 60529	Manual Override	Flush; Metal, non-locking
Electrical Connections	EN 175301-803 Form A connector		
Temperature	Ambient: 40° to 120°F (4° to 50°C) Media: 40° to 175°F (4° to 80°C) <i>For other temperature ranges, consult ROSS.</i>		

IMPORTANT NOTE: Please read carefully and thoroughly all of the **CAUTIONS, WARNINGS** on the inside back cover.

Pressure Controlled Valves

5-Way 2-Position Valves, Single Pressure Controlled, Spring Return								
ISO Size	Port Size	Valve Model Number*	Avg. C _v	Average Response Constants**			Weight lb (kg)	
				M	F			
					In-Out	Out-Exh.		
1	1/8 - 3/8	W6056B2411	0.8	29	3.5	4.9	0.8 (0.4)	
2	3/8 - 1/2	W6056B3411	1.9	41	1.5	2.4	1.5 (0.7)	
3	1/2 - 3/4	W6056B4411	3.8	51	0.8	1.1	3.0 (1.4)	



5-Way 2-Position Valves, Double Pressure Controlled, Detented								
ISO Size	Port Size	Valve Model Number*	Avg. C _v	Average Response Constants**			Weight lb (kg)	
				M	F			
					In-Out	Out-Exh.		
1	1/8 - 3/8	W6056B2417	0.8	17	3.5	5.0	0.8 (0.4)	
2	3/8 - 1/2	W6056B3417	1.9	20	1.5	2.5	1.5 (0.7)	
3	1/2 - 3/4	W6056E4417	3.8	20	0.8	1.1	3.0 (1.4)	



5-Way 3-Position Valves, Double Pressure Controlled									
ISO Size	Port Size	Valve Model Number*			Avg. C _v	Average Response Constants**			Weight lb (kg)
		Power Center	Closed Center	Open Center		M	F		
						In-Out	Out-Exh.		
1	1/8 - 3/8	W6057A2934	W6057B2411	W6057B2417	0.8	30	3.5	5.0	1.0 (0.5)
2	3/8 - 1/2	W6057A3933	W6057B3411	W6057B3417	1.9	40	1.5	2.5	1.5 (0.7)
3	1/2 - 3/4	W6057A4937	W6057B4411	W6057B4417	3.8	50	0.8	1.1	3.0 (1.4)

Power Center		Closed Center		Open Center	
--------------	--	---------------	--	-------------	--

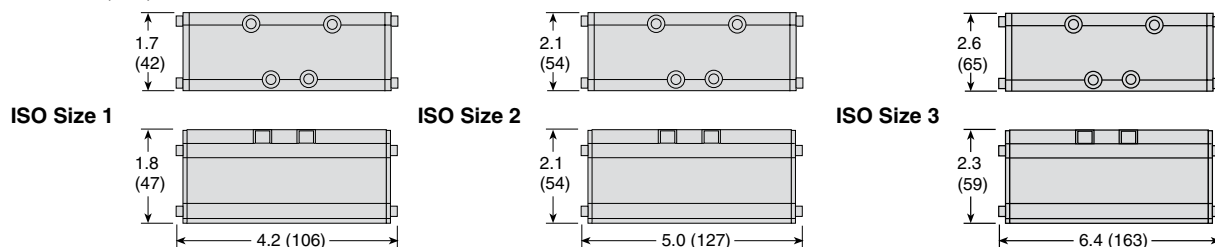


* Sub-bases and manifold bases ordered separately, refer to page C2.8-9.

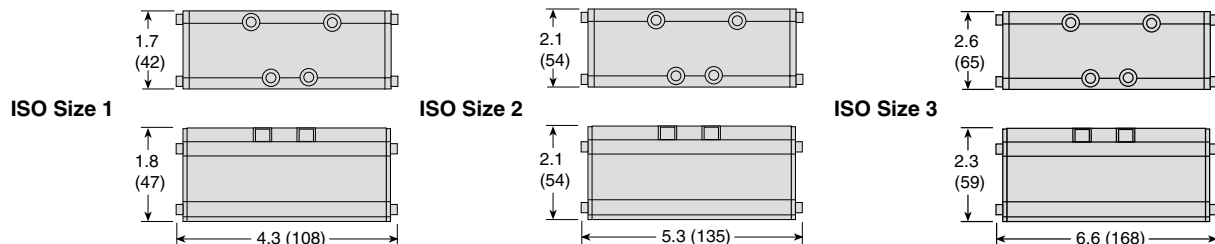
** Valve Response Time – Response Time (msec) = M + (F • V). This is the average time required to fill a volume V (cubic inches) to 90% of supply pressure or to exhaust it to 10% of supply pressure. M and F values are shown above.

Valve Dimensions – inches (mm)

5/2 Valves



5/3 Valves



Accessories ordered separately, refer to page C2.10-11.

STANDARD SPECIFICATIONS (for valves on this page):

Construction Design	Spool and Sleeve	Operating Pressure	Vacuum to 150 psig (10 bar)
Mounting Type	Base		Pilot Supply:
Temperature	Ambient/Media: 40° to 175°F (4° to 80°C) For other temperature ranges, consult ROSS.	ISO Size 1: Minimum 30 psig (2 bar)	ISO Size 2 & 3: Minimum 15 psig (1 bar)
Flow Media	Filtered air	Pilot supply pressure must be equal to or greater than inlet pressure.	
Pilot Supply	External	Construction Material	Valve Body: Bar Stock Aluminum Spool: Stainless Steel Seals: Buna-N

IMPORTANT NOTE: Please read carefully and thoroughly all of the **CAUTIONS, WARNINGS** on the inside back cover.

C2

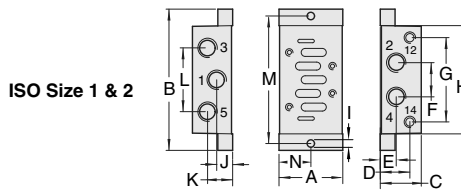
C

Single Bases

for ISO 5599-1 Valves W60 & W64 Series

ISO 5599-1 Single Bases, Side Ports

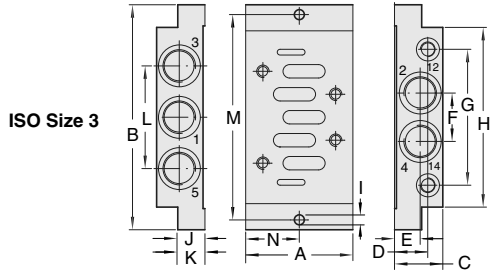
ISO Size	Port Size			Model Number	
	2, 4	1, 3, 5	12, 14	NPT Threads	G Threads
1	1/4	1/4	1/8	2076C01	D2076C01
2	3/8	3/8	1/8	2078C01	D2078C01
3	1/2	1/2	1/8	2080C01	D2080C01



Dimensions inches (mm)			
	ISO 1	ISO 2	ISO 3
A	1.81 (46)	2.20 (56)	2.80 (71)
B	4.33 (110)	4.88 (124)	5.87 (149)
C	1.18 (30)	1.42 (36)	1.26 (32)
D	0.85 (21.5)	1.02 (26)	0.87 (22)
E	0.39 (10)	0.55 (14)	0.67 (17)
F	0.94 (24)	1.18 (30)	1.26 (32)
G	2.38 (60.5)	3.91 (74)	3.54 (90)
H	3.27 (83)	3.74 (95)	2.69 (119)
I	0.22 (5.5)	2.56 (6.5)	0.26 (6.6)
J	0.41 (10.5)	0.41 (10.5)	0.67 (17)
K	0.77 (19.5)	0.87 (22)	0.67 (17)
L	1.69 (43)	2.20 (56)	2.67 (68)
M	3.86 (98)	4.41 (112)	5.35 (136)
N	0.90 (23)	1.10 (28)	1.40 (35.5)

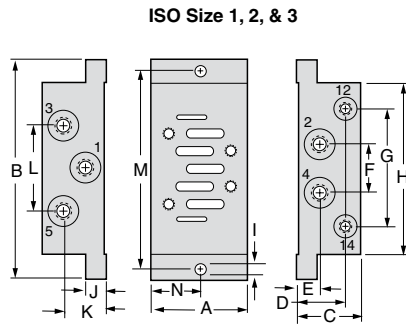
C2

C



ISO Size	Port Size			Model Number*
	2, 4	1, 3, 5	12, 14	NPT Threads
1	1/8	1/4	1/8	654K91
	3/8	3/8	1/8	642K91
2	1/2	1/2	1/8	643K91
3	3/4	3/4	1/2	644K91

* NPT port threads only.

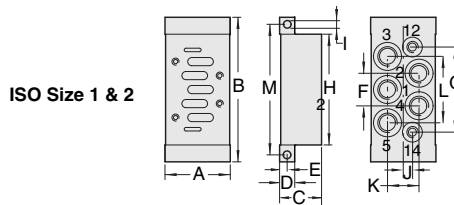


Dimensions inches (mm)			
	ISO 1	ISO 2	ISO 3
A	1.89 (48)	2.24 (57)	2.80 (71)
B	4.33 (110)	4.88 (124)	5.87 (149)
C	1.26 (32)	1.57 (40)	1.26 (32)*
D	0.93 (24)	1.18(30)	0.87 (22)
E	0.41 (38)	0.55 (14)	0.67 (17)
F	0.94 (24)	1.18 (30)	1.26 (32)
G	2.28 (58)	2.92 (74)	3.54 (90)
H	3.27 (83)	3.74 (95)	2.69 (119)
I	0.22 (6)	0.26 (7)	0.26 (7)
J	0.41 (38)	0.55 (14)	0.67 (17)
K	0.85 (22)	1.02 (26)	0.59 (15)
L	1.70 (43)	2.20 (56)	2.68 (68)
M	3.86 (22)	4.41 (112)	5.35 (136)

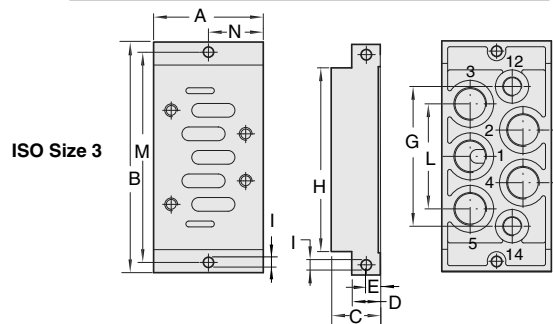
* 1.77 (45) on sub-base 644K91.

ISO 5599-1 Single Bases, Bottom Ports

ISO Size	Port Size			Model Number	
	2, 4	1, 3, 5	12, 14	NPT Threads	G Threads
1	1/4	1/4	1/8	2077C01	D2077C01
2	3/8	3/8	1/8	2079C01	D2079C01
3	1/2	1/2	1/8	2081C01	D2081C01



Dimensions inches (mm)			
	ISO 1	ISO 2	ISO 3
A	1.81 (46)	2.20 (56)	2.80 (71)
B	4.33 (110)	4.88 (124)	5.87 (149)
C	1.18 (30)	1.42 (36)	1.26 (32)
D	0.39 (10)	0.51 (13)	0.71 (18)
E	0.20 (5)	0.26 (6.5)	0.35 (9)
F	0.94 (24)	1.18 (30)	1.26 (32)
G	2.36 (60)	2.87 (73)	3.54 (90)
H	3.27 (83)	3.74 (95)	2.69 (119)
I	0.22 (5.5)	2.56 (6.5)	0.26 (6.6)
J	0.41 (10.5)	0.41 (10.5)	-
K	0.91 (23)	1.06 (27)	-
L	1.81 (46)	2.24 (57)	-
M	3.86 (98)	4.41 (112)	5.35 (136)
N	-	-	1.40 (35.5)



IMPORTANT NOTE: Please read carefully and thoroughly all of the **CAUTIONS, WARNINGS** on the inside back cover.

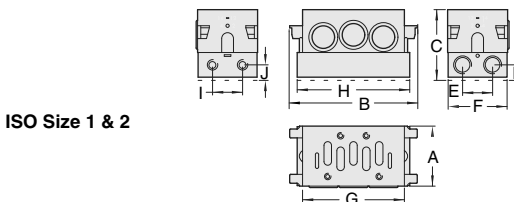
Manifold Bases & End Station Kits

for ISO 5599-1 Valves
W60 & W64 Series

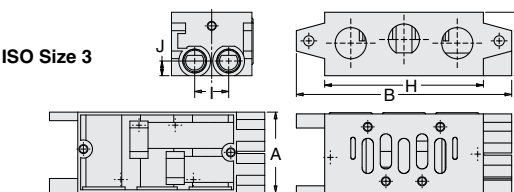
ISO 5599-1 Manifold Bases, Side Ports

ISO Size	Port Size		Model Number	
	2, 4	12, 14	NPT Threads	G Threads
1	1/4	1/8	2002K91	D2002K91
2	3/8	1/8	2003K91	D2003K91
3	1/2	1/8	2004K91	D2004K91

In addition to the manifold stations, an end station kit must be ordered for each manifold installation.



ISO Size 1 & 2



ISO Size 3

	Dimensions inches (mm)		
	ISO 1	ISO 2	ISO 3
A	1.69 (43)	2.20 (56)	2.80 (71)
B	4.33 (110)	4.72 (120)	7.48 (190)
C	2.05 (52)	2.60 (66)	2.20 (56)
D	0.39 (10)	0.57 (14.5)	–
E	0.87 (22)	1.10 (28)	–
F	1.65 (42)	2.17 (55)	–
G	2.95 (75)	3.74 (95)	–
H	3.50 (89)	4.13 (105)	5.51 (140)
I	0.87 (22)	1.10 (28)	1.18 (30)
J	0.39 (10)	0.57 (14.5)	0.51 (13)

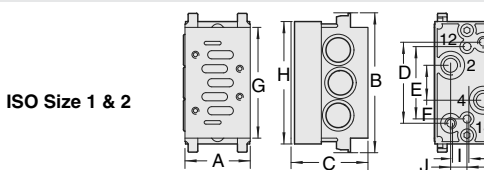


Connectors and gaskets are included with each manifold base.
The ISO Size 1 & 2 manifold bases contain 3 O-rings and 2 connector brackets.

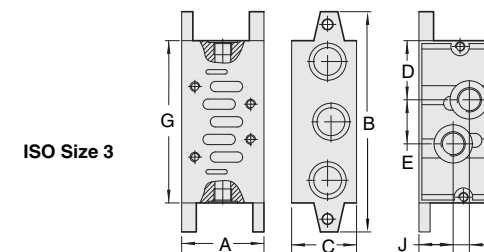
ISO 5599-1 Manifold Bases, Bottom Ports

ISO Size	Port Size		Model Number	
	2, 4	12, 14	NPT Threads	G Threads
1	1/4	1/8	1997K91	D1997K91
2	3/8	1/8	1998K91	D1998K91
3	1/2	1/8	1999K91	D1999K91

In addition to the manifold stations, an end station kit must be ordered for each manifold installation.



ISO Size 1 & 2



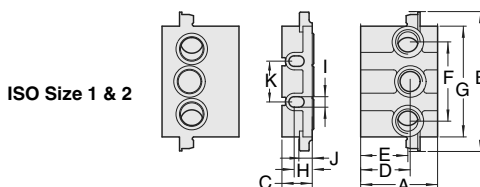
ISO Size 3

	Dimensions inches (mm)		
	ISO 1	ISO 2	ISO 3
A	1.69 (43)	2.20 (56)	2.80 (71)
B	4.33 (110)	4.72 (120)	7.48 (190)
C	2.05 (52)	2.60 (66)	2.20 (56)
D	2.28 (58)	2.73 (69.5)	2.01 (51)
E	1.57 (40)	2.44 (62)	1.50 (38)
F	0.79 (20)	1.18 (30)	–
G	2.28 (58)	2.73 (69.5)	5.51 (140)
H	3.50 (89)	4.13 (105)	–
I	0.35 (9)	0.55 (14)	0.55 (14)
J	0.43 (11)	0.55 (14)	0.16 (29.5)

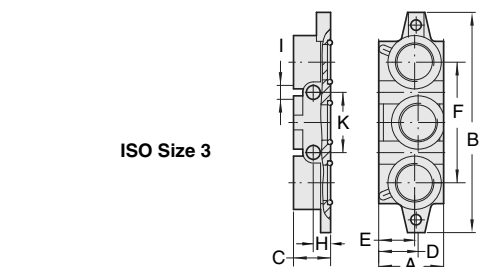


End Station Kits - ISO Size 1, 2, & 3

ISO Size	Port Size		Model Number	
	1, 3, 5		NPT Threads	G Threads
1	3/8		723K86	D723K86
2	1/2		724K86	D724K86
3	1		731K86	D731K86



ISO Size 1 & 2



ISO Size 3

	Dimensions inches (mm)		
	ISO 1	ISO 2	ISO 3
A	2.05 (52)	2.60 (66)	2.20 (56)
B	3.94 (100)	4.72 (120)	7.48 (190)
C	0.87 (22)	1.02 (26)	1.26 (32)
D	1.53 (39)	1.67 (42.5)	1.34 (34)
E	1.22 (31)	1.59 (40.5)	1.22 (31)
F	2.17 (55)	2.68 (68)	4.09 (104)
G	2.95 (75)	3.74 (95)	–
H	0.55 (14)	0.61 (15.5)	0.59 (15)
I	0.28 (7)	0.35 (9)	0.47 (12)
J	0.39 (10)	0.45 (11.5)	–
K	1.10 (28)	1.38 (35)	2.05 (52)



IMPORTANT NOTE: Please read carefully and thoroughly all of the **CAUTIONS, WARNINGS** on the inside back cover.

C2

C

Manifold Kits & Accessories

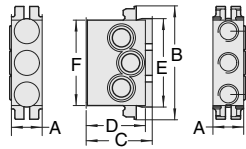
for ISO 5599-1 Valves W60 & W64 Series

Air Supply Module Top & Bottom Ports - ISO Size 1 & 2

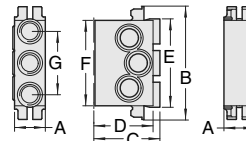
ISO Size	Ports Size	Model Number			
		Top Ports		Bottom Ports	
		NPT Threads	BSPP Threads	NPT Threads	G Threads
1	3/8	725K86	D725K86	727K86	D727K86
2	1/2	726K86	D726K86	728K86	D728K86



Top Ports ISO Size 1 & 2



Bottom Ports ISO Size 1 & 2

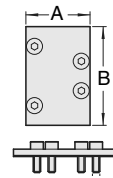


	Dimensions inches (mm)	
	ISO 1	ISO 2
A	1.06 (27)	1.06 (27)
B	3.94 (100)	4.72 (120)
C	2.28 (58)	2.71 (69)
D	2.05 (52)	2.60 (66)
E	3.07 (78)	3.74 (95)
F	2.95 (75)	3.74 (95)
G	2.20 (56)	2.20 (56)

Blanking Plate Kits - ISO Size 1, 2, & 3

ISO Size	Model Number
1	2602H77
2	2603H77
3	2604H77

A blanking plate is used to cover the top of a manifold station that is not in use. A kit consists of a metal plate, a gasket, and mounting bolts.



	Dimensions inches (mm)		
	ISO 1	ISO 2	ISO 3
A	1.57 (40)	2.04 (52)	3.03 (77)
B	2.60 (66)	3.15 (80)	4.17 (106)
Plate Thickness	0.16 (4)	0.24 (6.2)	0.41 (12)

Assembly Kits - ISO Size 1 & 2

ISO Size	Model Number
1	732K86
2	733K86



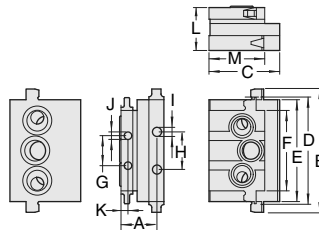
Transition Modules - ISO Size 1, 2 & 3

ISO Size	Model Number
1 to 2	729K86
2 to 3	730K86

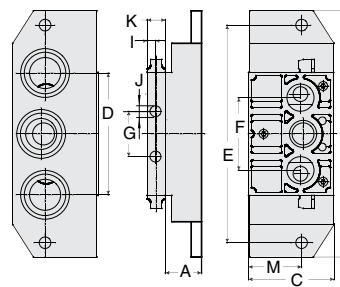
Different size ISO valves can be used in the same manifold installation by means of transition module. The inlet and exhaust ports of two different size manifold stations are connected by means of a transition module installed between the two stations.



ISO Size 1 to 2



ISO Size 2 to 3



	Dimensions inches (mm)	
	ISO 1 & 2	ISO 2 to 3
A	1.32 (33.5)	1.10 (28)
B	4.72 (120)	7.48 (190)
C	2.60 (66)	2.60 (66)
D	3.94 (100)	3.94 (100)
E	3.74 (95)	6.61 (168)
F	2.95 (75)	2.20 (56)
G	1.10 (28)	1.38 (35)
H	1.38 (35)	-
I	0.34 (8.5)	2.56 (6.5)
J	0.28 (7)	0.34 (8.5)
K	2.56 (6.5)	0.56 (14)
L	1.58 (40)	-
M	2.05 (52)	1.61 (41)

Blocking Disks - ISO Size 1 & 2

Ports between manifold stations can be closed by means of blocking disks.

ISO Size	Model Number
1	319A40
2	320A40
3	321A40



Independent Pressure Modules

When a valve in a manifold installation must work at a different pressure than that supplied to the manifold, an independent supply can be provided via an independent pressure module. The pressure module mounts between valve and base and isolates the valve from the manifold inlet pressure. The independent supply is connected to an inlet port in the end of the pressure module.

ISO Size	Inlet Port	Part Number
1	1/4	703K77
2	3/8	692K77
3	1/2	715K77

IMPORTANT NOTE: Please read carefully and thoroughly all of the **CAUTIONS, WARNINGS** on the inside back cover.

Accessories

for ISO 5599-1 Valves
W60 & W64 Series

Interposed Pressure Regulators

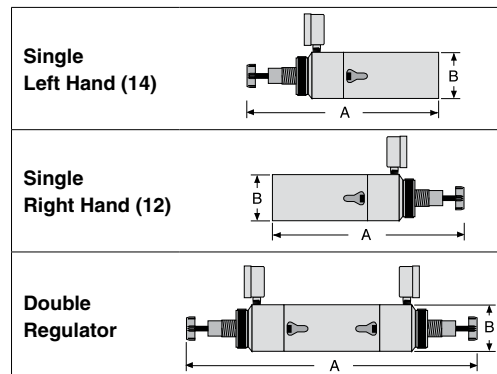
Interposed pressure regulator controls pressure through the base-mounted valve. Single pressure regulator available with left hand (14) and right hand (12) orientation. Single pressure regulators provide the same regulated pressure at both outlet ports.

Double pressure regulators allow the pressure at each outlet port to be set independently. Requires no new piping.



ISO Size	Pressure psig (bar)	Regulator Model Number		
		Single		Double
		Left Hand (14)	Right Hand (12)	
1	10 (0.68) to 130 (9)	1300K91	1301K91	1302K91
2	10 (0.68) to 130 (9)	1303K91	1304K91	1305K91
	5 (0.34) to 60 (4.13)	2044K91	–	–
3	10 (0.68) to 130 (9)	1306K91	1307K91	1308K91

ISO Size	Regulator Dimensions – inches (mm)		
	A (Single)	A (Double)	B (Single/Double)
1	7.3 (186)	13.2 (336)	1.5 (39)
2	8.3 (211)	14.8 (376)	2.0 (51)
3	10.5 (267)	18.3 (465)	2.5 (64)



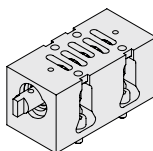
C2

C

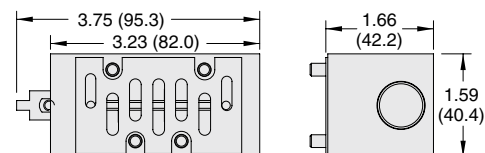
Interposed Shut-Off

Manually actuated with a 1/4 turn, the interposed shut-off isolates all ports, including the pilot.

ISO Size	Part Number
1	1871B91
2 & 3	Please contact ROSS.



ISO Size 1 Dimensions - inches (mm)



Interposed Flow Controls (for W60 Series valves only)

ISO Size	Model Number
1	701B77
2	702B77
3	722K77

An interposed flow control unit regulates the exhaust flow of air from a pneumatic cylinder, thereby controlling the extension and retraction speeds. Separate controls regulate the air flow from each end of the cylinder. Being located between the valve and base, the unit requires no additional piping.

Electrical Connectors

Electrical Connector	Electrical Connector Type	Cord Length meters (feet)	Cord Diameter	Electrical Connector Model Number		
				Without Light	Lighted Connector*	
					24 Volts DC	120 Volts AC
EN 175301-803 Form A	Prewired Connector (18 gauge)	2 (6½)	6-mm	721K77	720K77-W	720K77-Z
	Connector for threaded conduit (1/2 inch electrical conduit fittings)	–	–	723K77	724K77-W	724K77-Z
	Connector Only	–	–	937K87	936K87-W	936K87-Z



*Lights in connectors with a translucent housing can be used as indicator lights to show when solenoids are energized.

Silencers

Port Size	Thread Type	Model Number		Avg. C _v	Dimensions inches (mm)		Weight lb (kg)
		NPT Threads	R/Rp Threads		Width	Length	
1/4	Male	5500A2003	D5500A2003	2.1	0.9 (21)	2.2 (55)	0.1 (0.1)
3/8	Male	5500A3013	D5500A3013	2.7	0.9 (21)	2.2 (55)	0.1 (0.1)
1/2	Male	5500A4003	D5500A4003	4.7	1.3 (32)	3.6 (91)	0.2 (0.1)
3/4	Male	5500A5013	D5500A5013	5.1	1.3 (32)	3.6 (91)	0.2 (0.1)



Pressure Range: 0 to 290 psig (0 to 20 bar) maximum. **Flow Media:** Filtered air.

IMPORTANT NOTE: Please read carefully and thoroughly all of the **CAUTIONS, WARNINGS** on the inside back cover.