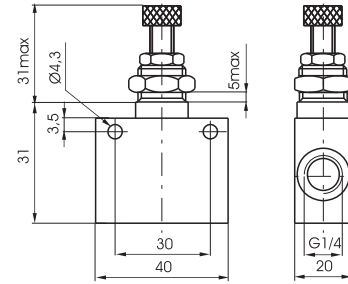


1

**Flow control valve G1/4" - compact type - unidirectional**

Ordering code
<b>6.01.14/1</b>



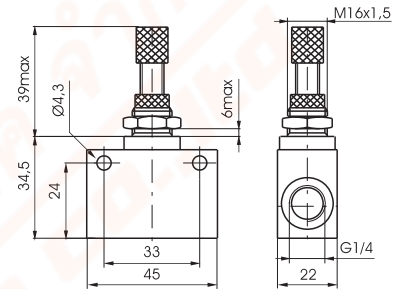
Weight gr. 100



Operational characteristic	Fluid	Max working pressure	Operating Temperature		Orifice size
	Filtered air	10 bar	Min. -5°C	Max. +70°C	mm. 5,5

**Flow control valve G1/4"**

Ordering code
<b>6.01.F</b>
FUNCTION
F 14N = Unidirectional
14/1N = Bidirectional



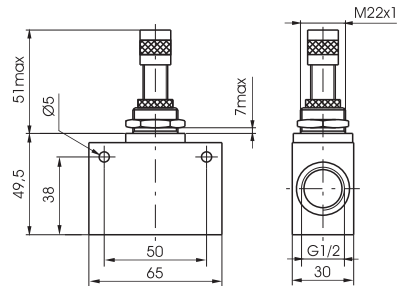
Weight gr. 105



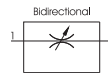
Operational characteristic	Fluid	Max working pressure	Operating Temperature		Orifice size
	Filtered air	10 bar	Min. -5°C	Max. +70°C	mm. 7

**Flow control valve G1/2"**

Ordering code
<b>6.01.F</b>
FUNCTION
F 12N = Unidirectional
12/1N = Bidirectional



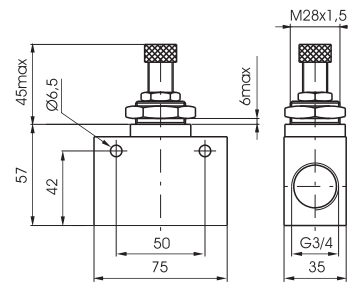
Weight gr. 505



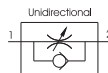
Operational characteristic	Fluid	Max working pressure	Operating Temperature		Orifice size
	Filtered air	10 bar	Min. -5°C	Max. +70°C	mm. 12

**Flow control valve G3/4" - unidirectional**

Ordering code
<b>6.01.34</b>



Weight gr. 500



Operational characteristic	Fluid	Max working pressure	Operating Temperature		Orifice size
	Filtered air	10 bar	Min. -5°C	Max. +70°C	mm. 12