

Inline Flow Control Valves

V55 Models Port Size: 1/4 to 1-1/4



Model Shown: V55-6

- ◆ Straight-through design provides high air flow into a cylinder.
- ◆ Flow out of a cylinder can be precisely controlled. Adjustable flow can range from near zero to full flow.
- ◆ Adjustment control can be locked in position to prevent a change due to vibration.
- ◆ Three body sizes.
- ◆ NPTF port threads; optional BSPP threads.

SPECIFICATIONS

Ambient/Media Temperature:

40° to 175°F (4° to 79°C).

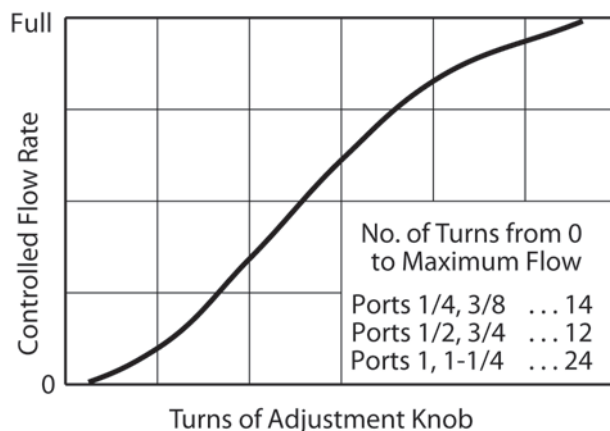
Body: Aluminum with brass adjusting stem.

Fluid Media: Compressed air.

Inlet Pressure:

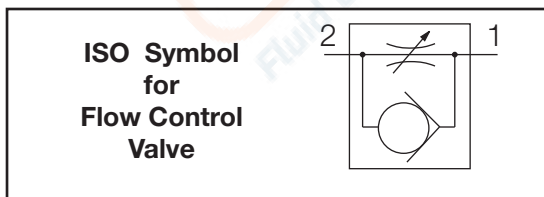
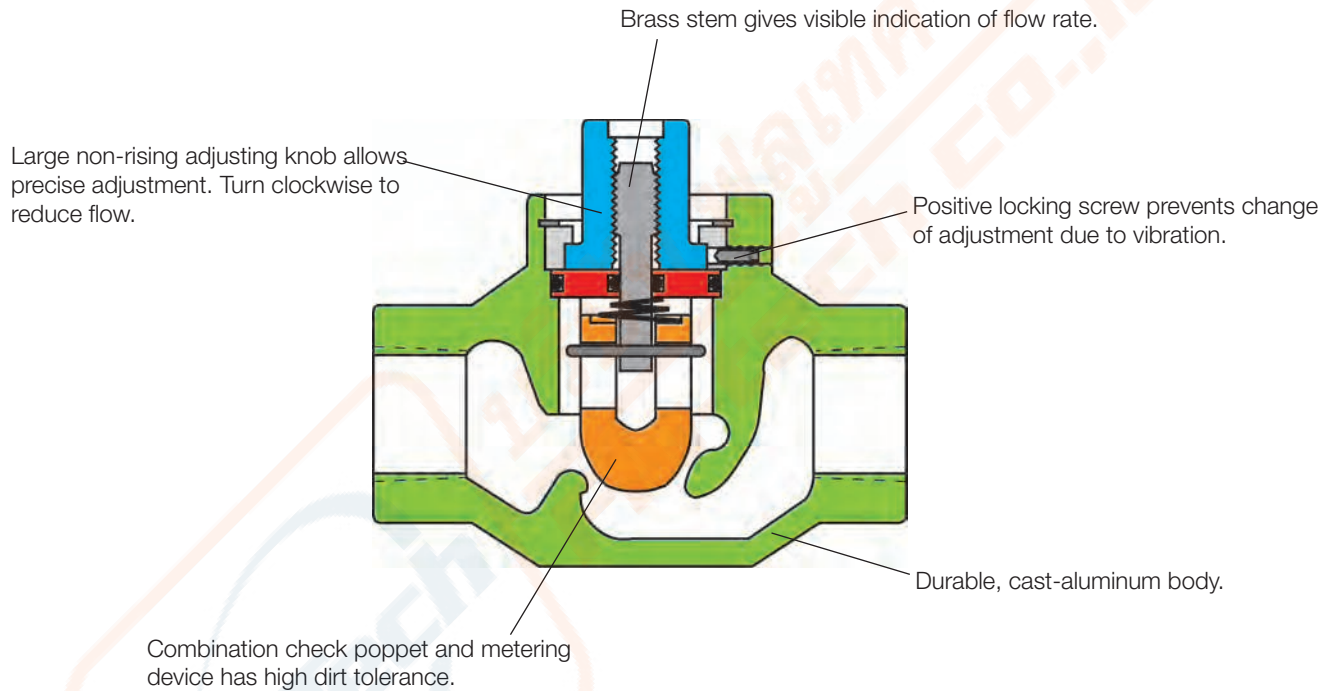
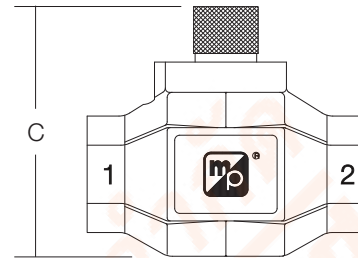
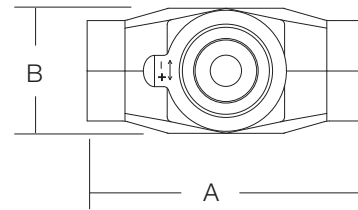
5 to 150 psig (0.3 to 10 bar) maximum.

TYPICAL PERFORMANCE CURVE



DIMENSIONS inches (mm)

Port Size	Average C_v (Full Flow)	A	B	C
1/4	2.3	2.8	1.3	2.5
3/8	2.6	(70)	(32)	(64)
1/2	7.5	3.8	1.6	3.1
3/4	8.3	(95)	(40)	(78)
1	17	5.0	2.5	4.4
1-1/4	22	(127)	(64)	(111)



ORDERING INFORMATION

Order by the model number given below.
For BSPP port threads add W to the end of the model number.

Port Size	Average C_v (Full Flow)	Model Number
1/4	2.3	V55-2
3/8	2.6	V55-3
1/2	7.5	V55-4
3/4	8.3	V55-6
1	17	V55-8
1-1/4	22	V55-10

