

# COMPACT Manual control high-flow / exhaust lockout valve and DPB (Delayed-Pressure-Buildup) lockout Valve

## V382 & V383 Models Port Sizes: 1/4, 3/8, 1/2, & 3/4



View shown (above) using padlock in closed position.

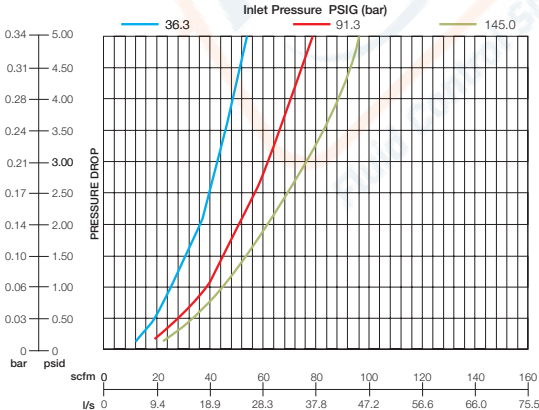
**Model Shown:** V383-4N6A0A  
With DPB option

- ◆ High-Flow threaded Exhaust port to accommodate muffler or a line for remote exhausting.
- ◆ Compact modular (series 380 and CFR360 / 370) or inline.
- ◆ Optional slow start (delayed-pressure-buildup) function.
- ◆ 3 ported valve.
- ◆ 1/8" downstream pressure ports.
- ◆ Options available to indicate downstream pressure.
- ◆ NPTF port threads; optional BSPP threads.
- ◆ Carboxilated Buna O-Rings & Acetal Slide for low break away friction, even after a long standby period.
- ◆ **PUSH** to close, **PULL** to open (DPB-Pull to open as soft start, press button and continue to PULL for full flow).
- ◆ Preferred installation is downstream of F-R-L. **NOTE:** If installed up-stream of regulator, the regulator must be capable of Quick Exhaust (reverse flow).
- ◆ LOTO (lockout Tag out)

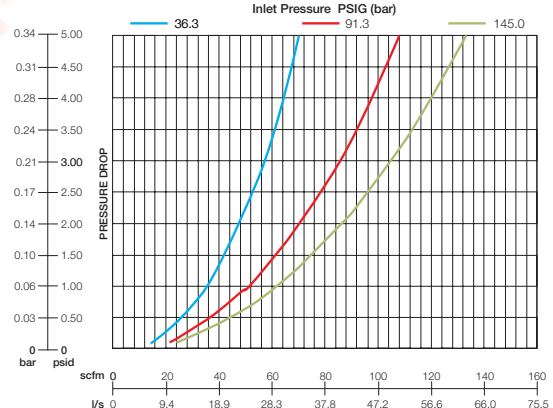
### SPECIFICATIONS

**Ambient/Media Temperature:** 40° to 175°F (4° to 79°C).  
**Body:** Zinc.  
**Color:** Black body, red lockout slide  
**Fluid Media:** Compressed air.  
**Inlet Pressure:** 200 psig (13.8 bar) maximum.  
**Elastomers:** Nitrile.  
**Ports:** Tapped inlet, outlet and exhaust ports.  
**Slide:** Acetal.  
**Maximum lock shank diameter:** 0.260.

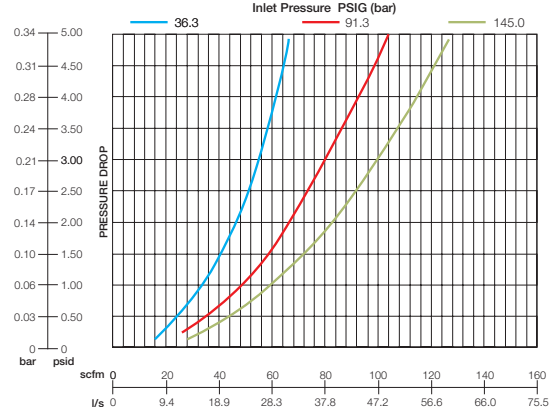
**V382-2 and V383-2 FLOW CHARACTERISTICS**



**V382-3 and V383-3 FLOW CHARACTERISTICS**



**V382-4 and V383-4 FLOW CHARACTERISTICS**



บริษัท ฟลูเทค จำกัด  
FLU - TECH CO., TD

845/3-4 หมู่ 3 ถ.เทพารักษ์ ต.เทพารักษ์ อ.เมือง จ.สมุทรปราการ 102070  
 845/3-4 Thepharak RD., T. Thepharak, A. Muang, Samutprakan 10270 THAILAND  
 Tel. 0 2384 6060, Fax 0 2384 5701, Email : sales@flutech.co.th, www.flutech.co.th

**DIMENSIONS** Inches (mm)

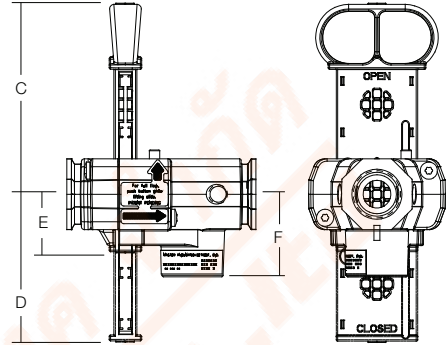
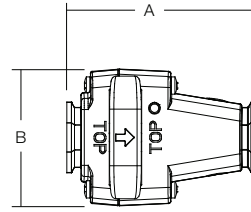
Port Sizes	A	B	C	D	E	F
All	4.01 (101.9)	2.90 (73.7)	4.05 (102.9)	3.14 (79.8)	1.24 (31.5)	1.75 (44.5)

Lockout slide hole diameter: 0.29.  
 Lockout accepts maximum padlock shackle diameter: 0.26  
 Maximum lockout hasp diameter: 0.26.

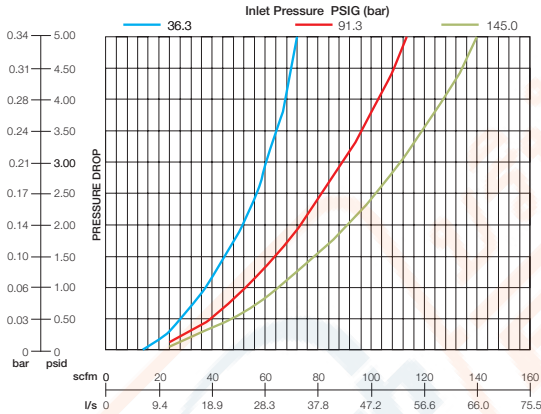
**Flow at 5 PSID**

	NFPA	36.3 SCFM	91.3 SCFM	145 SCFM
<b>V382-2</b>	CV = 3.7	53	78	96
<b>V382-3</b>	CV = 4.9	70	109	132
<b>V382-4</b>	CV = 4.9	67	103	128
<b>V382-6</b>	CV = 5.3	73	114	141

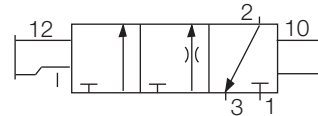
**NOTE:** These units can be padlocked in the closed position only.



**V382-6 and V383-6 FLOW CHARACTERISTICS**



**ISO Symbol**



**ORDERING INFORMATION**

Change the letters in the sample model number below to specify the lockout valve you want.

**V38 3 - 3 N 6 A 1 A W**

**LOCKOUT TYPE**

- Lockout (Push-Pull) ..... 2
- Lockout with (0.050 Orifice) delayed- Pressure-Buildup function. .... 3

**INLET / OUTLET PORT SIZE**

- 1/4 NPTF ..... 2
- 3/8 NPTF ..... 3
- 1/2 NPTF ..... 4
- 3/4 NPTF ..... 6

**EXHAUST PORTS**

- 3/4 NPTF ..... 6

**PORT TYPE**

- NPTF threads ..... Leave blank
- BSPF threads ..... W

**MUFFLER TYPE**

- None ..... A
- Muffler (M200-6) ..... B

**GAUGE OPTIONS**

- None ..... 0
- 0-30 PSI ..... 1
- 0-60 PSI ..... 2
- 0-160 PSI ..... 3
- Pressure sensor (118-122) ..... 4

